



Office of the
**First Minister and
Deputy First Minister**
www.ofmdfmi.gov.uk

Social Capital in Northern Ireland: An Analysis of the 2005/06 Continuous Household Survey

October 2007



Table of contents

| | |
|---|-----------|
| Executive Summary | i |
| 1.0 Introduction | 1 |
| 1.1 Introduction and Background | 1 |
| 1.2 Northern Ireland Context | 3 |
| 1.3 Methodology | 3 |
| 1.4 Analysis of the results | 4 |
| 2.0 Results | 5 |
| 2.1 Item by item analysis | 5 |
| 2.2 Age | 6 |
| 2.3 Gender | 9 |
| 2.4 Marital Status | 11 |
| 2.5 Religion | 14 |
| 2.6 Education | 16 |
| 2.7 Economic Activity | 20 |
| 2.8 Socio-economic group | 23 |
| 2.9 Area | 27 |
| 2.10 Limiting long-standing illness | 31 |
| 2.11 Household type | 34 |
| 3.0 Comparisons with 03/04 Social Capital module | 37 |
| 4.0 Summary | 40 |
| Bibliography | 46 |
| Appendix 1- Methodology | 47 |
| Appendix 2- Item by item response patterns | 53 |
| Appendix 3- Results | 56 |

Executive Summary

Social capital definitions vary but the main aspects include citizenship, 'neighbourliness', social networks and norms. Social capital questions were included for the first time in the Northern Ireland Continuous Household survey (NICHHS) in 2003/04. This is the second report and analyses NICHHS data from 2005/06.

An aggregated method was used to aid the analyses of the data. Each of the aggregated scores were analysed against a range of socio-economic characteristics. The main findings were:

- Socio-economic group

Employers and managers display more bonding social capital while professionals display more bridging and linking social capital.

- Age

Older people exhibit stronger bonding while younger people exhibit stronger bridging social capital.

- Gender

Males have stronger bonding, bridging and linking social capital than females.

- Marital status

Individuals in a couple relationship have stronger bonding, bridging and linking social capital.

- Religion

Protestants have stronger bridging social capital. Differences found between the two main religious communities were marginal in terms of bonding, linking and overall social capital.

- Education

Individuals with higher qualifications display stronger bridging and linking social capital than individuals with no qualifications.

- Economic activity

Individuals who are working display stronger bridging, linking and overall social capital than individuals who are economically inactive or unemployed.

- Area

Individuals living in the west and east of NI display stronger bonding, linking and overall social capital while people living in Belfast and east of NI display stronger bridging social capital.

- Limiting Long standing illness

Individuals with no limiting long standing illness display stronger bridging social capital. Limiting long standing illness appears to have little effect on bonding, linking and overall social capital.

- Type of Household

Couple/cohabiting households with or without children display stronger bonding, bridging and overall social capital than other households. Couple/cohabiting households with children display stronger linking social capital.

- Comparison with 03/04 Social Capital module

Between 03/04 and 05/06 there has been a significant increase in the percentage of individuals with strong linking social capital.

Average scores of Socio-economic categories 05/06

| | Bonding | Bridging | Linking | Overall |
|---|----------------|-----------------|----------------|----------------|
| <u>GENDER</u> | | | | |
| Male | 5.9 | 0.9 | 0.5 | 7.3 |
| Female | 4.5 | 0.2 | 0.1 | 4.8 |
| <u>AGE</u> | | | | |
| 16-29 years | 3.4 | 0.8 | 0.2 | 4.4 |
| 30-59 years | 5.5 | 0.7 | 0.5 | 6.8 |
| 60+ years | 5.7 | 0.3 | 0.2 | 6.2 |
| <u>MARITAL STATUS</u> | | | | |
| Couple | 6.2 | 1.0 | 0.7 | 7.9 |
| Single | 4.6 | 0.2 | 0.0 | 4.8 |
| <u>RELIGION</u> | | | | |
| Catholic | 5.5 | 0.2 | 0.5 | 6.2 |
| Protestant | 5.3 | 0.8 | 0.3 | 6.5 |
| <u>EDUCATION</u> | | | | |
| Higher | 5.8 | 1.3 | 0.9 | 8.0 |
| Other | 5.2 | 0.8 | 0.4 | 6.5 |
| No qualifications | 5.4 | 0.1 | 0.2 | 5.6 |
| <u>ECONOMIC ACTIVITY</u> | | | | |
| In employment | 5.7 | 1.1 | 0.7 | 7.4 |
| Unemployed | 3.4 | 0.3 | -0.5 | 3.2 |
| Economically inactive | 5.1 | 0.1 | 0.1 | 5.3 |
| <u>SOCIO-ECONOMIC GROUP</u> | | | | |
| Professional | 5.7 | 1.4 | 0.5 | 7.7 |
| Employers & managers | 6.3 | 1.1 | 0.6 | 8.1 |
| Intermediate & junior non-manual | 5.0 | 0.9 | 0.5 | 6.3 |
| Skilled manual | 6.0 | 0.5 | 0.4 | 6.9 |
| Semi-skilled manual & personal services | 4.9 | -0.0 | 0.2 | 5.0 |
| Unskilled manual | 5.2 | -0.3 | -0.0 | 4.9 |
| <u>AREA</u> | | | | |
| Belfast | 4.2 | 0.6 | 0.1 | 4.9 |
| East NI | 5.3 | 0.9 | 0.3 | 6.5 |
| West NI | 6.1 | 0.1 | 0.5 | 6.8 |

| | | | | |
|--|-----|-----|------|-----|
| <u>LIMITING LONG STANDING ILLNESS</u> | | | | |
| Yes | 4.8 | 0.0 | -0.0 | 4.8 |
| No | 5.6 | 0.8 | 0.5 | 7.0 |
| | | | | |
| <u>TYPE OF HOUSEHOLD</u> | | | | |
| 1 person only | 4.7 | 0.3 | 0.0 | 5.0 |
| Mar/coh couple- kids | 6.3 | 1.1 | 0.9 | 8.3 |
| Mar/coh couple- no kids | 6.1 | 0.9 | 0.5 | 7.4 |
| Lone-parent- kids | 4.4 | 0.0 | 0.2 | 4.7 |

Definition of scores

| | | | | |
|--------------------|----------------|-----------------|----------------|---------------|
| | Bonding | Bridging | Linking | Social |
| Very Strong | 7 to 11 | 2.5 to 4 | 3 to 4 | 10 to 19 |
| Strong | 1 to 6 | 0.5 to 2 | 1 to 2 | 0.5 to 9.5 |
| Neither | 0 | 0 | 0 | 0 |
| Weak | -1 to -6 | -0.5 to -2 | -1 to -2 | -0.5 to -9.5 |
| Very Weak | -7 to -11 | -2.5 to -4 | -3 to -4 | -10 to -19 |

Social Capital in Northern Ireland

SECTION 1 Introduction

1.1 Introduction and Background

The notion of social capital has been around for many years. It first appeared in Lyda Judson Hanifan's discussions of rural school community centres (Hanifan 1916). More recently, it has been the work of Robert D. Putnam (1993; 2000) that has launched social capital as a focus for research and policy discussion.

Social capital describes the pattern and intensity of networks and norms among people and the shared values which arise from those networks and norms. Greater interaction between people generates a greater sense of community spirit.

Definitions of social capital vary, but the main aspects include citizenship, community spirit, social networks and norms.

Putnam's definition states 'whereas physical capital refers to physical objects and human capital refers to the properties of individuals, social capital refers to connections among individuals- social networks and the norms of reciprocity and trustworthiness that arise from them. In that sense social capital is closely related to what some have called 'civic virtue'. The difference is that 'social capital' calls attention to the fact that civic virtue is most powerful when embedded in a sense network of reciprocal social relations. A society of many virtuous but isolated individuals is not necessarily rich in social capital'. (Putnam 2000: 19)

The definition used by the Office for National Statistics (ONS), taken from the Office for Economic Co-operation and Development (OECD), states 'networks together with shared norms, values and understandings that facilitate co-operation within or among groups'. (OECD, 2001)

Research has shown that communities with a good 'stock' of social capital are more likely to benefit from lower crime figures, better health, higher educational achievement, and better economic growth. In other words, those with extensive networks are more likely to

be 'housed, healthy, hired and happy' (Woolcock 2001). There can also be a significant downside. Groups and organizations with high social capital have the means to work to exclude and subordinate others. All of these areas are of concern to both policy-makers and community members alike.

Formal and informal networks are central to the concept of social capital. They are defined as the personal relationships which are accumulated when people interact with each other in families, workplaces, neighbourhoods, local associations and a range of informal and formal meeting places (Australian Bureau of Statistics, 2000).

Different types of social capital can be described in terms of different types of networks:

- Bonding social capital- describes closer connections between people and is characterised by strong bonds e.g. among family members or among members of the same ethnic group; it is good for 'getting by' in life.
- Bridging social capital- describes more distant connections between people and is characterised by weaker, but more cross-cutting ties e.g. with business associates, friends from different ethnic groups, friends of friends, etc; it is good for 'getting ahead' in life.
- Linking social capital- describes connections with people in positions of power and is characterised by relations between those within a hierarchy where there are differing levels of power; it is good for accessing support from formal institutions. Linking is different from bonding and bridging in that it is concerned with relations between people who are not on an equal footing.

There are a number of different aspects to social capital and measuring the level of social capital in communities can be complex. In many surveys respondents are asked a range of questions that cover a variety of issues. They commonly focus on:

- Levels of trust- for example, whether individuals trust their neighbours and whether they consider their neighbourhood a place where people help each other.
- Membership- for example, how many clubs, societies or social groups individuals belong to.
- Networks and how much social contact individuals have in their lives- for example, how often individuals see family and friends.

By definition, social capital examines relationships and networks within communities. This means using regional, sample surveys, to measure social capital has its limitations, namely that the sample does not examine local community relationships or networks.

1.2 Northern Ireland Context

There have been a number of studies conducted in Northern Ireland on Social Capital (Murtagh, 2002; Cairns, Van Til & Williamson, 2003). Murtagh analysed the social capital questions contained in the 2000 Life and Times survey. He found that Northern Ireland's stock of social capital is widely distributed and in some sectors intensively developed. He found that Protestants are more likely to participate in clubs, societies and church based activities than Catholics. Murtagh also noted that residential segregation plays an important role in how social capital is constructed in Northern Ireland but that there is a high proportion of activity conducted in mixed religion settings.

Cairns et al (2003) found little difference between Catholics and Protestants in relation to social capital. However there were differences in relation to socio-economic status and social capital. Individuals with a higher socio-economic status were significantly more likely to have higher levels of social capital. Working class communities were characterised by low morale and by low expectations about their future. Further small differences were found between rural and urban dwellers with rural dwellers having higher levels of social capital.

1.3 Methodology

Questions on Social Capital were included for the first time in 2003/04 in the Continuous Household survey (CHS). The CHS is one of the largest continuous surveys carried out in Northern Ireland. The survey is carried out by the Central Survey Unit of the Northern Ireland Statistics and Research Agency (NISRA). It is based on a random sample of the general population resident in private households and has been running since 1983.

1.4 Analysis of the results

Each individual question that related to social capital, was analysed against particular socio-economic characteristics for example, age, sex, religion, marital status, qualifications, economic activity, and limiting long standing illness.

An aggregated method was also used to aid the analyses of the data and a score given to each of the three strands of social capital on the basis that it would be advantageous to understanding the broad trends in the data. A full account of how the scores were constructed is included in Appendix 1. As far as was possible each question was given equal weighting and the scores for each question added together. The outcome therefore, is a scale which scores the individual on the extent of their social capital within the three strands, bonding, bridging and linking and an overall social capital score for each individual. Each of the aggregated scores were then analysed against socio-economic characteristics.

SECTION 2 Results

2.1 Item by Item Analysis

The item-by-item response patterns (see Appendix 2) reveal a mixed pattern of responding.

Approximately one third of individuals defined the area in which they lived as a housing estate or housing development. Twenty-one percent lived in mainly Catholic areas, 31% lived in mainly Protestant areas and 41% lived in mixed areas.

Individuals' opinion of their areas varied, 23% of individuals disagreed that their area was a close, tight knit community compared to 14% strongly agreeing that their area was a close tight knit community. A large proportion of individuals (37% disagree/strongly disagree) did not believe that they could influence decisions in their areas and a similar proportion (42%) disagreed that you often see strangers in their area. The majority of individuals (62%) never travel to areas or through areas in which they feel less safe.

In terms of family and friends, 42% of individuals speak to their relatives on the phone everyday, 35% speak to their neighbours everyday and 28% speak to their friends on the phone everyday. The frequency of actually seeing relatives varied with 31% seeing them everyday and 31% seeing them once/twice a week. Individuals (35%) are more likely to see their friends once/twice a week.

Trust and safety also varies among individuals, 35% of individuals trust most of the people in their area compared to 40% of individuals trusting few people. Individuals feel less safe at night in their area, 12% feel very unsafe at night compared to 1% feeling very unsafe during the day.

The remainder of this section of the report will review individual questions by socio-economic characteristics and analyse the aggregated social capital scores.

2.2 Age

Older people (60+) participate in their local area more than younger people. The majority of older people (58%) know most or many of the people in their area while 45% of 16-29 year olds know most or many of the people in their area (Figure 2.1). In addition 57% of older people strongly agree or agree that their area is a close-knit community compared to 45% of 16-29 year olds (Figure 2.2).

Figure 2.1 Would you say you know most of the people in your area?

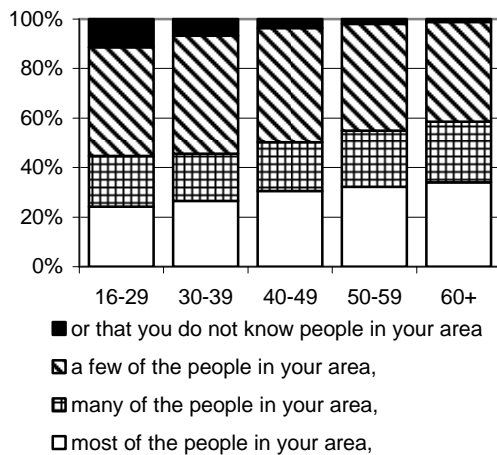
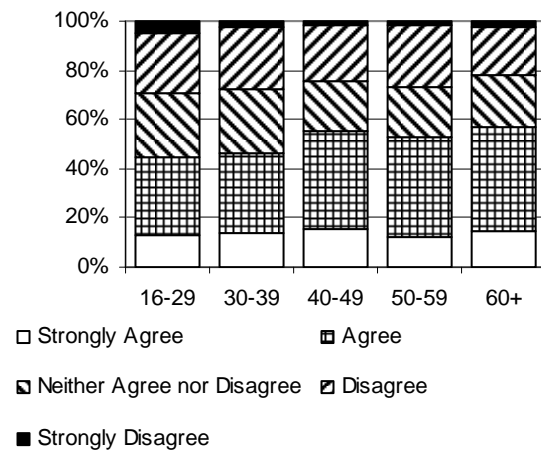


Figure 2.2 How much would you agree that this area is a close, tight knit community?



In a society where older people have a significant fear of crime it is encouraging that 65% of older people trust most or many of the people in their area. Sixty-Nine percent of older people have had a favour done for them by a neighbour in the past 6 months (Figures 2.3 & 2.4).

Figure 2.3 Would you say that you trust most people in your area?

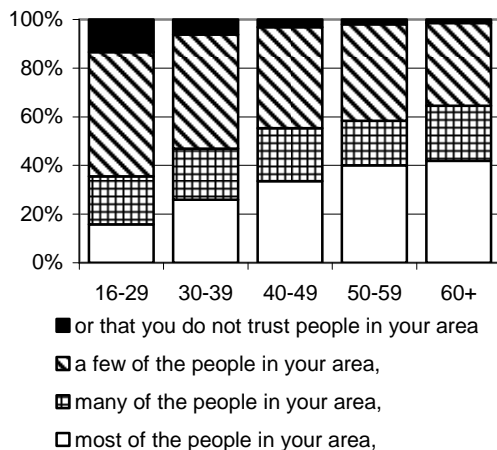
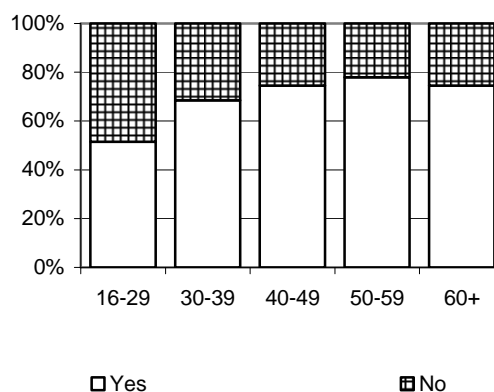
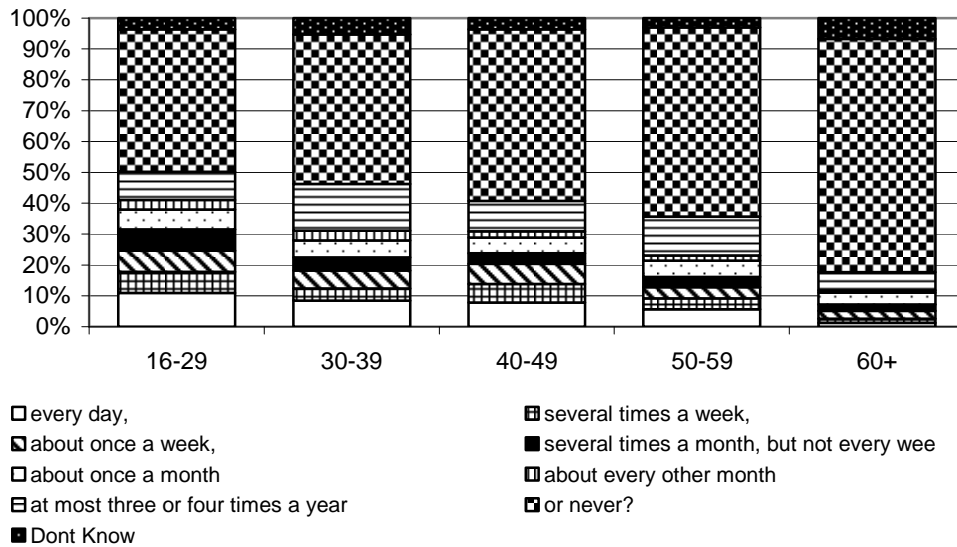


Figure 2.4 In the past 6 mths, have any of your neighbours done a favour for you?



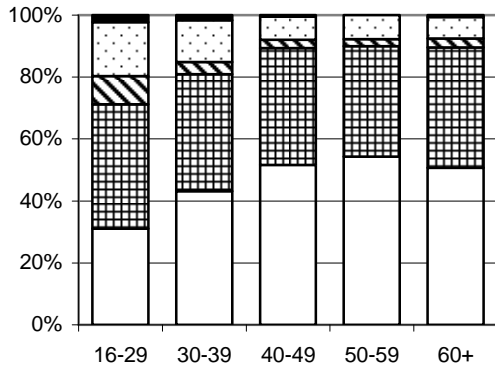
However, concerns over personal safety does appear to be an issue with older people with 39% feeling unsafe walking alone in their area after dark compared to 30% of 16-29 yr olds (Appendix 3 Table 3.5). Approximately three-quarters of older people never travel to areas in which they feel less safe compared to 46% of 16-29 yr olds (Figure 2.5). These findings appear to suggest that older peoples' fear of crime emanates from a fear of strangers and not people in their own area.

Figure 2.5 How often do you travel to areas or through areas in which you feel less safe?



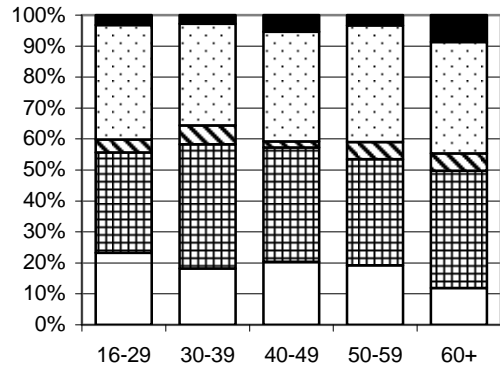
Bonding social capital increases with age. Approximately 31% of 16- 29 year olds have very strong bonding compared to 50% of 30- 59 year olds and 51% of over 60 year olds (Figure 2.6). The opposite is true for bridging social capital, 22% of 16-29 year olds have very strong bridging compared to 19% of 30-59 year olds and 11.9% of over 60 year olds (Figure 2.7). Linking varies with age with the middle age group displaying stronger linking, 12% of 30-59 year olds have very strong linking compared to 8% of 16-29 year olds and over 60 year olds (Appendix 3 Table 3.9).

Figure 2.6 Bonding by age groups



□ very strong ▣ strong ▤ neither ▥ weak ■ very weak

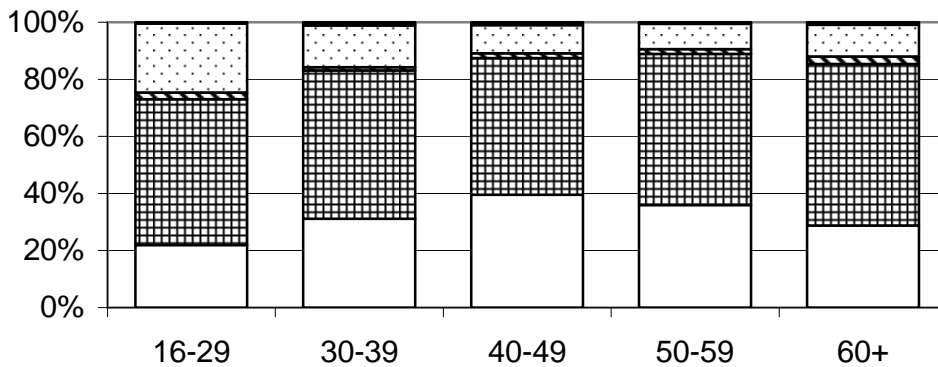
Figure 2.7 Bridging by age groups



□ very strong ▣ strong ▤ neither ▥ weak ■ very weak

Overall social capital increases with age with 73% of 16- 29 year olds having very strong/strong social capital compared to 86% of 30- 59 year olds and 85% of over 60 year olds (Figure 2.8).

Figure 2.8 Overall Social Capital by age groups



□ very strong ▣ strong ▤ neither ▥ weak ■ very weak

2.3 Gender

There are only a few differences between males and females. Safety is more a concern for females than males with 79% of males feeling very or fairly safe walking alone in their area after dark compared to 47% of females (Figure 2.9).

Figure 2.9 How safe do you feel walking alone in this area after dark?



Females (65%) are also less likely to travel to areas that they feel less safe in than males (59%) (Appendix 3 Table 3.11).

Males (54%) are more likely to be involved in an organisation than females (39.0%). Approximately 74% of males are confident that they would know who to turn to if there was an issue that affected them personally compared to 60% of females (Figures 2.10 & 2.11).

Figure 2.10 Do you belong to a club?

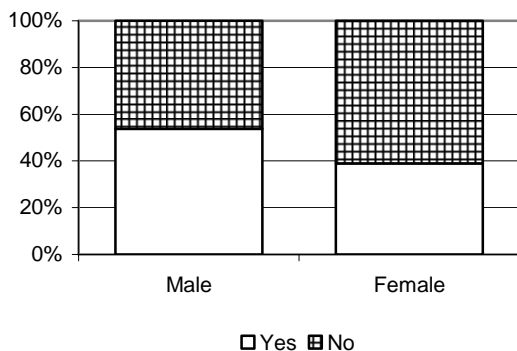
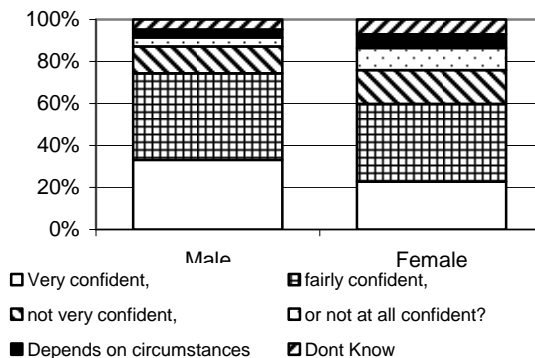


Figure 2.11 How confident are you that you know who to turn to for help if faced with personal issue?



Males (54%) are more likely to have very strong bonding than females (39%) (Figure 2.12). Males are also more likely to have very strong/strong bridging and very

strong/strong linking (60%, 50% respectively) than females (44% for both) (Figures 2.13 & 2.14).

Figure 2.12 Bonding by sex

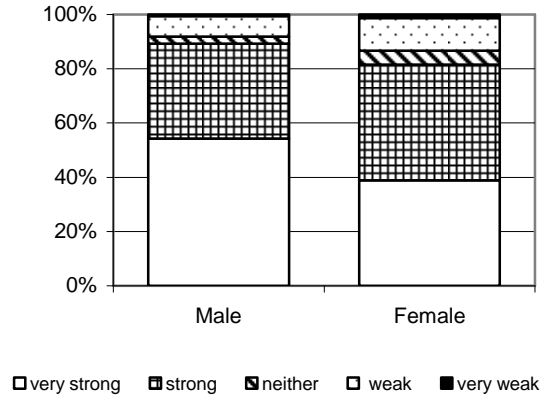
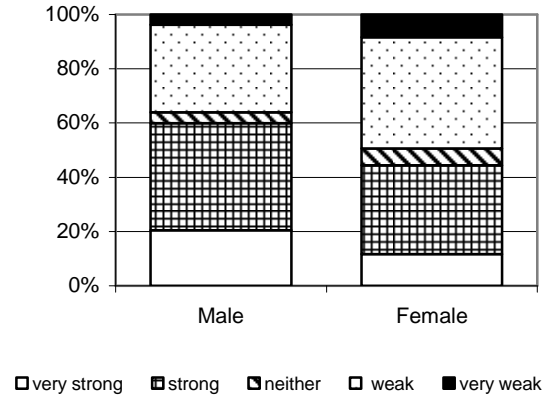


Figure 2.13 Bridging by sex



Overall males (89%) are more likely to have very strong/strong social capital than females (78%) (Figures 2.15).

Figure 2.14 Linking by sex

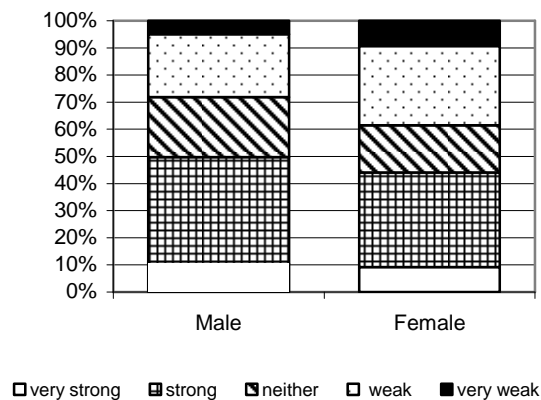
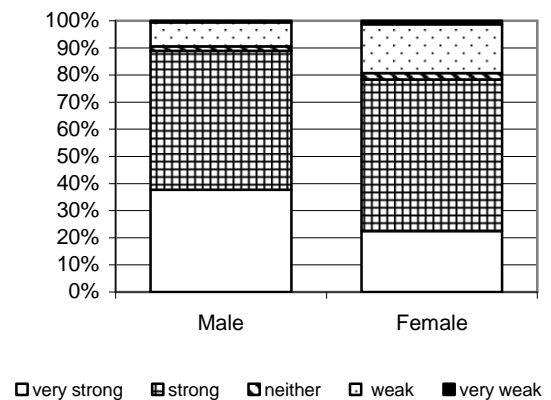


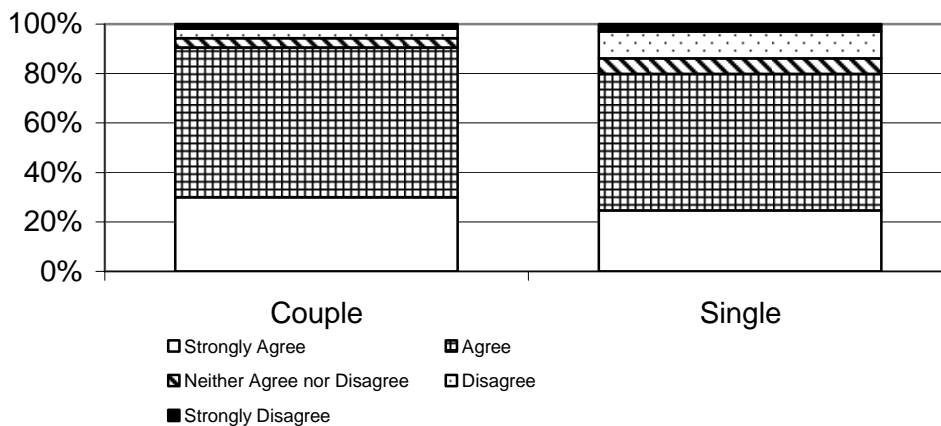
Figure 2.15 Overall Social Capital by sex



2.4 Marital Status

Individuals who are in a couple relationship (married/ cohabiting) participate and bond more within their community. Individuals in a couple relationship (91%) are more happy asking people to keep an eye on their house or property compared to 80% of single individuals (single, widowed, divorced, separated) (Figure 2.16).

Figure 2.16 How much do you agree you'd be happy asking people to keep an eye on house or property?



Couples (63%) have more trust in the people in their area compared to single individuals (49%) and couples (78%) are more likely to do favours for their neighbours than single individuals (62%) (Figures 2.17 & 2.18).

Figure 2.17 Would you say that you trust most people in your area?

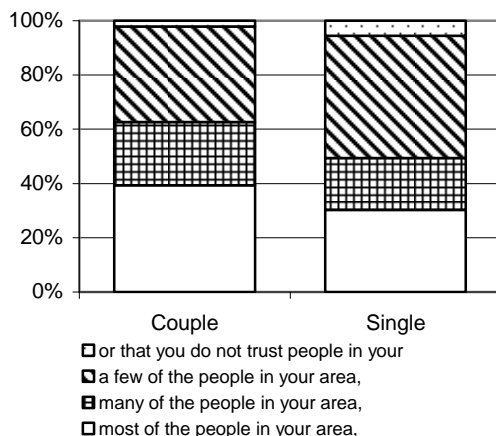
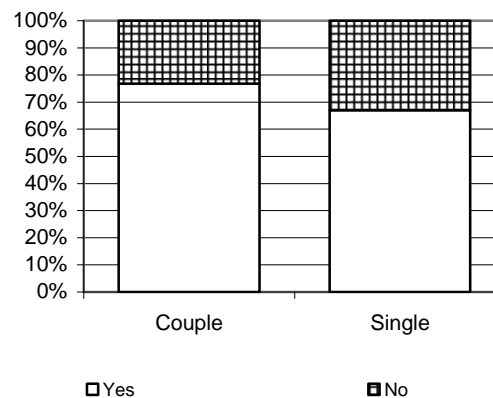


Figure 2.18 In the past 6 months, have you done a favour for a neighbour?



Safety appears to be more of an issue for single individuals. Couples (79%) are more likely to feel safe walking alone in their area after dark compared to single individuals (54%) (Figure 2.19).

Figure 2.19 How safe do you feel walking alone in this area after dark?



Couples are also more likely to travel outside of their area with 73% of couples travelling outside of their area several times a week or more compared to 51% of single individuals (Appendix 3 Table 3.23).

Participation in an organisation is more common among individuals in a couple (57%) than single individuals (40%). Couples (22%) are more likely to have taken action in an attempt to solve a local problem affecting people in their area than single individuals (15%) (Figures 2.20 & 2.21).

Figure 2.20 Do you belong to a club?

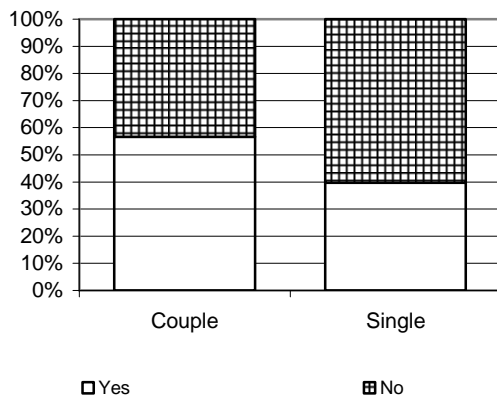
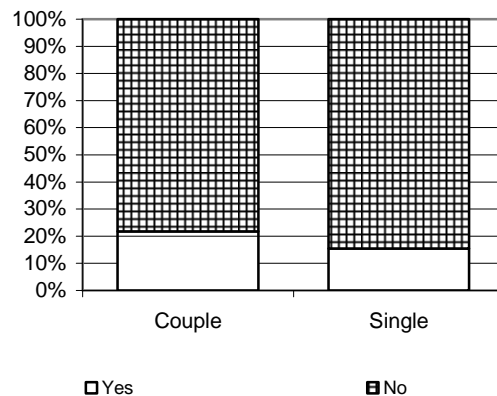


Figure 2.21 Have you taken action in an attempt to solve a local problem that was affecting people in your area?



Individuals in a couple relationship (56%) are more likely to have very strong bonding compared to single individuals (41%) (Figure 2.22). Individuals in a couple relationship are

also more likely to have stronger bridging and stronger linking (64% and 53% respectively) compared to single individuals (44% and 42% respectively) (Figures 2.23 & 2.24).

Figure 2.22 Bonding by marital status

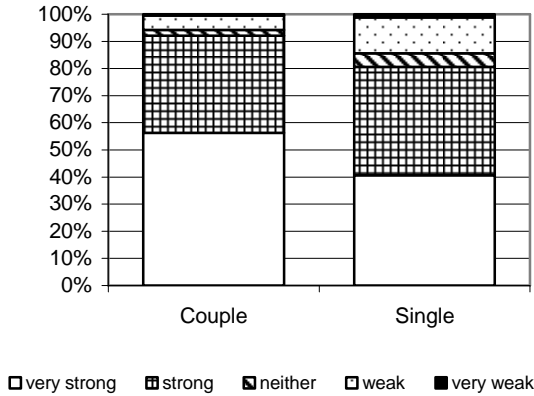
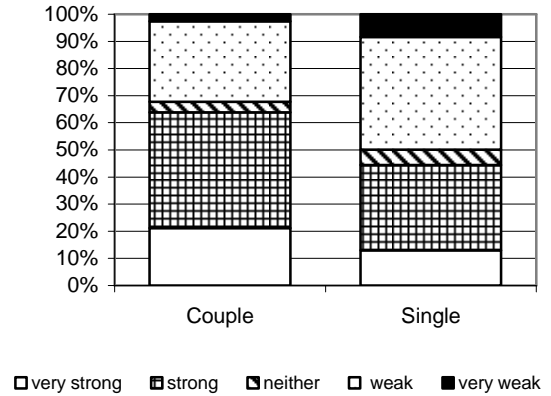


Figure 2.23 Bridging by marital status



Overall individuals in a couple relationship (93%) are more likely to have stronger social capital than single individuals (77%) (Figure 2.25).

Figure 2.24 Linking by marital status

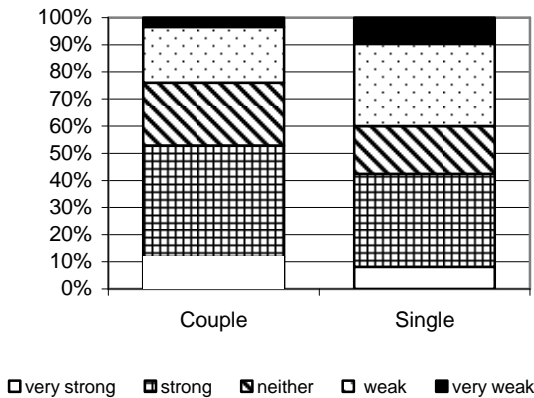
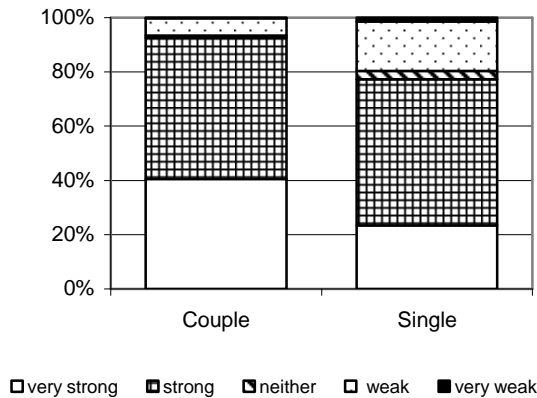


Figure 2.25 Overall Social capital by marital status



2.5 Religion

Roman Catholics appear to mix more within their local community than Protestants. Fifty-nine percent of Roman Catholics know most of the people in their area compared to 50% of Protestants. Fifty-nine per cent of Roman Catholics agree that their area is a close tight knit community compared to 50% of Protestants (Figures 2.26 & 2.27).

Figure 2.26 Would you say that you know?

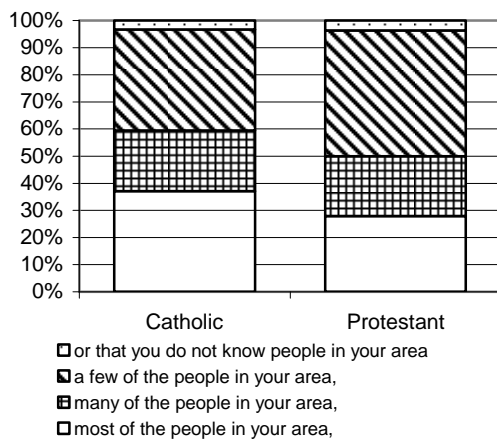
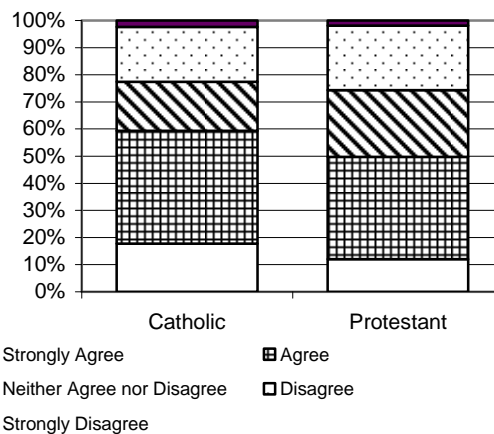
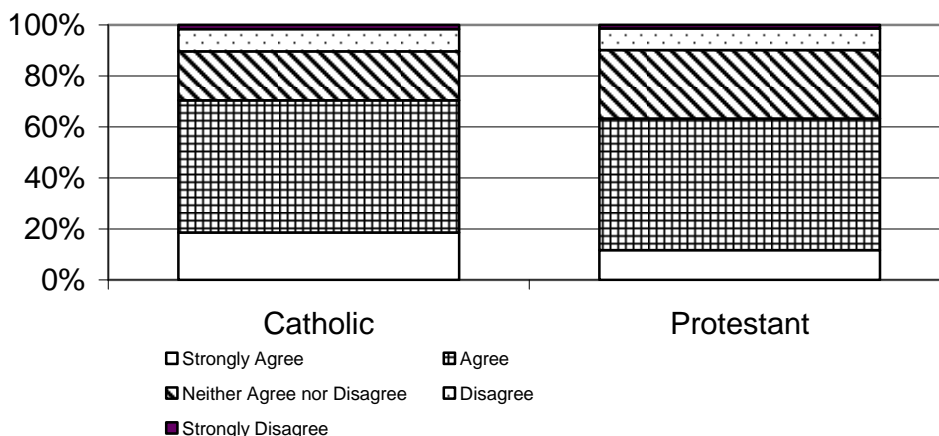


Figure 2.27 How much would you agree that this is a close, tight knit community?



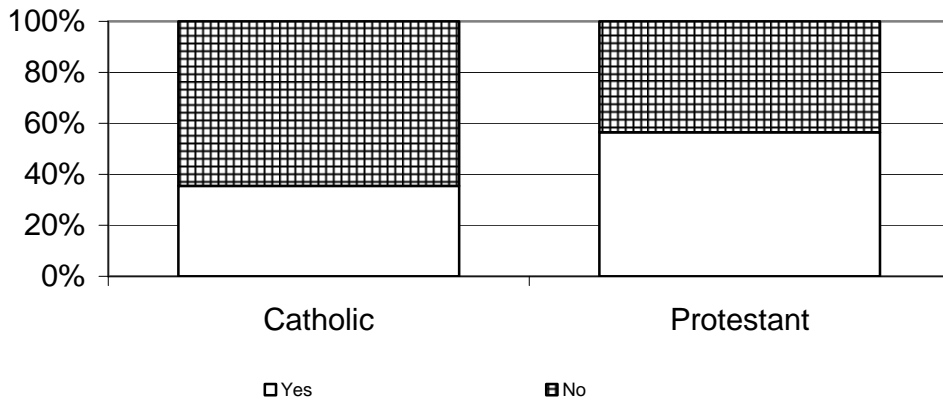
Seven in ten Roman Catholics (70%) agree that by working together, people in their area can influence decisions affecting their area compared to 63% of Protestants (Figure 2.28).

Figure 2.28 Do you agree that by working together people influence decisions affecting the area?



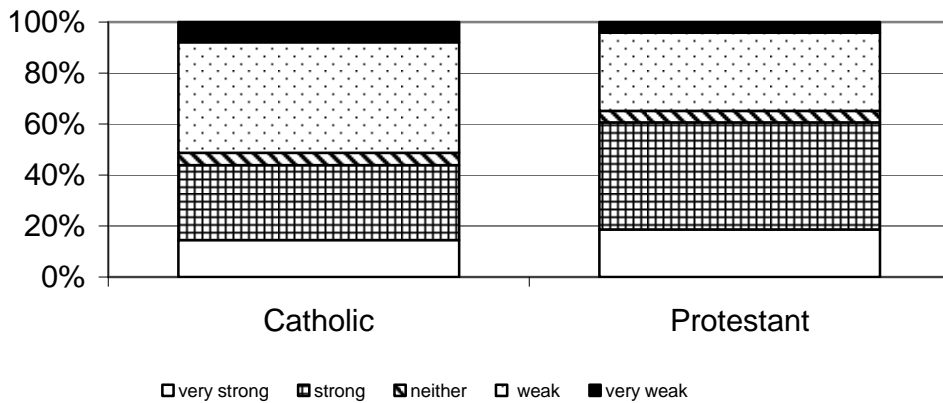
Protestants (56%) are more likely to be involved in an organisation or club than Roman Catholics (35%) (Figure 2.29)

Figure 2.29 Do you belong to a club/organisation?



Only marginal differences were found between Roman Catholics and Protestants in respect to bonding, linking and overall social capital. However Protestants (61%) are more likely to have stronger bridging compared to Roman Catholics (44%)(Figure 2.30).

Figure 2.30 Bridging by Religion



2.6 Education

Individuals without qualifications appear to mix more within their own community than individuals with higher qualifications. Individuals with no qualifications (61%) know most or many of the people in their area compared to 52% of people with other¹ qualifications and 40% of individuals with higher qualifications. Individuals with no qualifications (62%) and individuals with other qualifications (51%) are more likely to agree that their area is a close tight knit community than individuals with higher qualifications (40%) (Figures 2.31 & 2.32).

Figure 2.31 Would you say that you know ...?

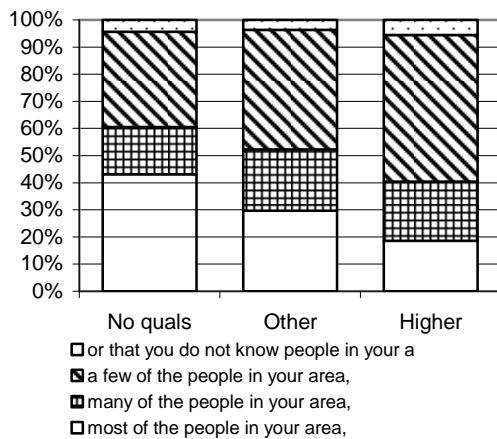
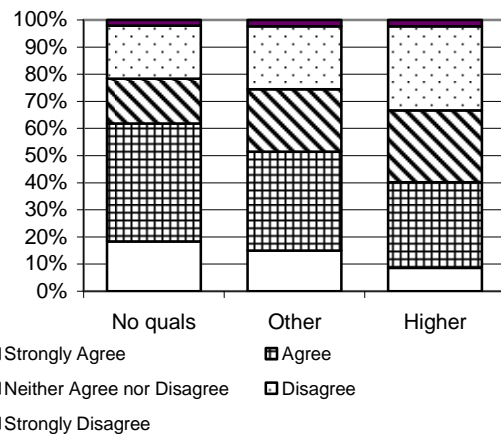


Figure 2.32 How much would you agree that this is a close, tight knit community?



However individuals with higher qualifications appear to travel and socialise more frequently outside of their area. Individuals with higher qualifications (61%) are more likely to be involved in an organisation or club than individuals with other qualifications (48%) and individuals with no qualifications (35%). Individuals with higher qualifications (81%) and individuals with other qualifications (74%) are more likely to travel outside of their area several times a week or more than individuals with no qualifications (54%) (Figure 2.33 & Table 2.1).

¹ Other qualifications include all qualifications not included in the higher qualification category

Figure 2.33 Do you belong to a club or organisation

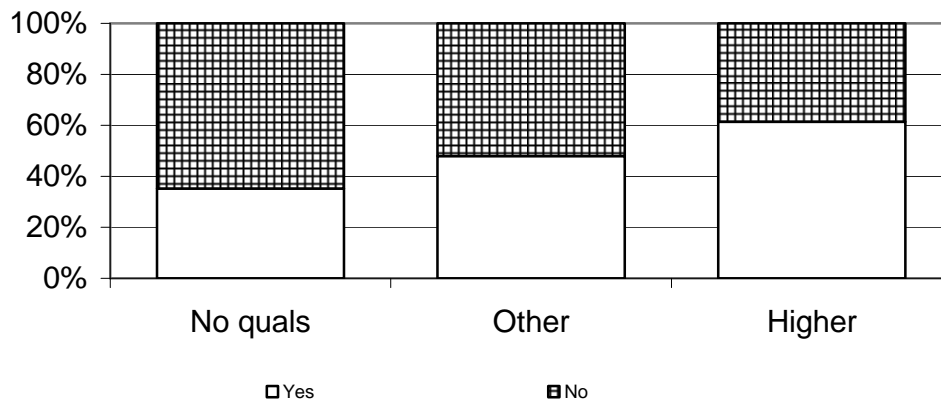


Table 2.1 How often do you travel outside your area?

| | Qualification Level | | |
|---|---------------------|-------|--------|
| | No quals | Other | Higher |
| every day, | 33.1 | 56.6 | 65.5 |
| several times a week, | 21.1 | 17.4 | 15.9 |
| about once a week, | 18.8 | 11.9 | 9.5 |
| several times a month, but not every wee | 7.7 | 5.5 | 4.7 |
| about once a month | 5.4 | 4.1 | 2.1 |
| about every other month | 1.9 | 0.4 | 1.1 |
| at most three or four times a year | 3.8 | 2.2 | 0.8 |
| or never? | 7.3 | 1.7 | 0.2 |
| Dont Know | 1.0 | 0.3 | 0.2 |
| Total | 100 | 100 | 100 |

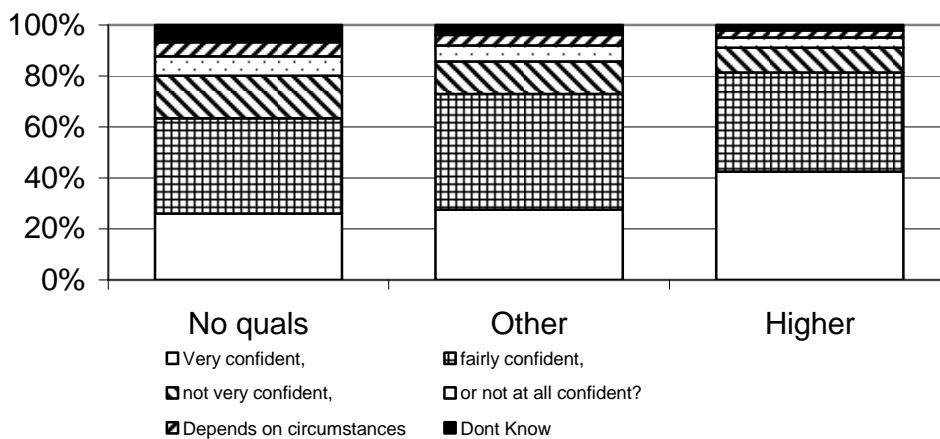
Individuals with no qualifications appear to be more concerned about their safety as individuals with higher qualifications (21%) and individuals with other qualifications (17%) are more likely to travel to areas in which they feel less safe, once a week or more compared to individuals who have no qualifications (11%) (Table 2.2).

Table 2.2 How often do you travel to areas or through areas in which you feel less safe?

| | Qualification Level | | |
|---|---------------------|-------|--------|
| | No quals | Other | Higher |
| every day, | 3.8 | 6.7 | 9.7 |
| several times a week, | 2.1 | 5.5 | 5.3 |
| about once a week, | 5.6 | 4.6 | 5.9 |
| several times a month, but not every wee | 3.4 | 4.3 | 3.6 |
| about once a month | 2.9 | 6.7 | 5.7 |
| about every other month | 0.8 | 1.7 | 4.0 |
| at most three or four times a year | 4.4 | 12.0 | 15.6 |
| or never? | 71.5 | 54.8 | 46.3 |
| Dont Know | 5.6 | 3.6 | 3.8 |
| Total | 100 | 100 | 100 |

Individuals with higher qualifications (81%) and individuals with other qualifications (73%) are more confident that if there was an issue that affected them personally they would know who to turn to for help compared to individuals with no qualifications (63%) (Figure 2.34).

Figure 2.34 How confident are you that you know who to turn to for help if faced with personal issue?



Differences were marginal between individuals with different education levels in respect to bonding social capital. Individuals with higher qualifications (71%) are more likely to have stronger bridging compared to individuals with other qualifications (58%) and individuals with no qualifications (40%) (Figure 2.35). Individuals with higher qualifications (58%) and

individuals with other qualifications (49%) are more likely to have stronger linking compared to individuals with no qualifications (44%) (Figure 2.36).

Figure 2.35 Bridging social capital by qualification level

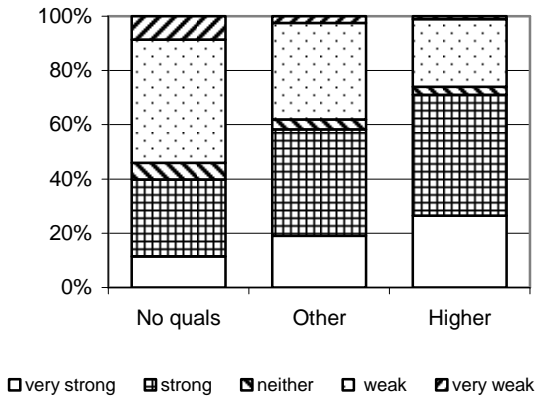
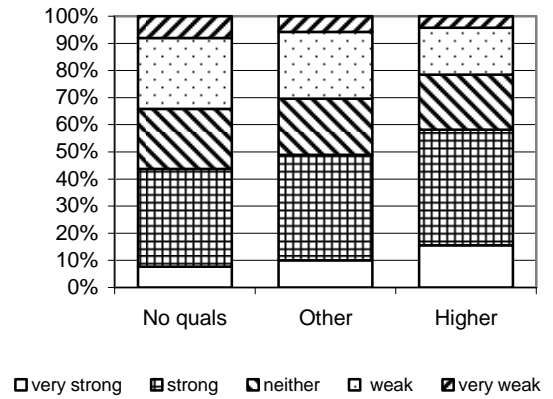
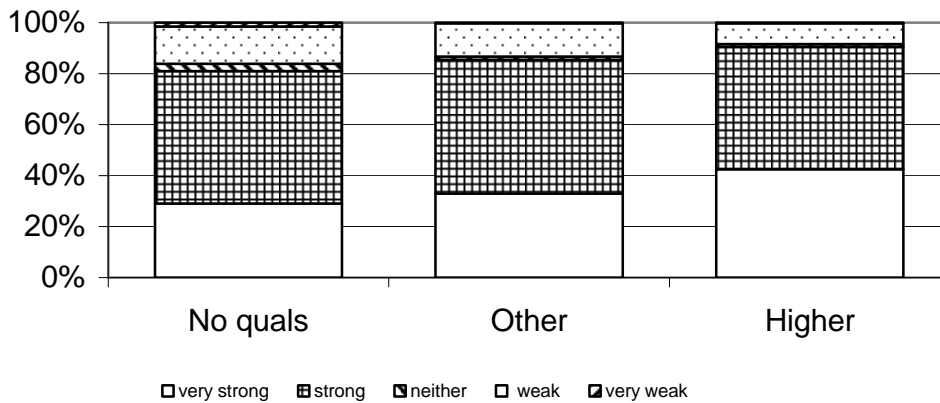


Figure 2.36 Linking social capital by qualification level



Overall, 90% of individuals with higher qualifications have very strong/strong social capital compared to 85% of individuals with other qualifications and 81% of individuals with no qualifications (Figure 2.37).

Figure 2.37 Overall Social Capital by Qualification level



2.7 Economic Activity (16+)

The economically inactive and the unemployed appear to bond more within their area than individuals who are working. The economically inactive (57%) and the unemployed (60%) are more likely to agree that their area is a close, tight knit community than individuals who are working (49%) (Figure 2.38). The economically inactive (67%) are more likely to know most or many of the people in their area than the working (49%) and unemployed (Figure 2.39).

Figure 2.38 How much would you agree that this area is a close, tight knit community

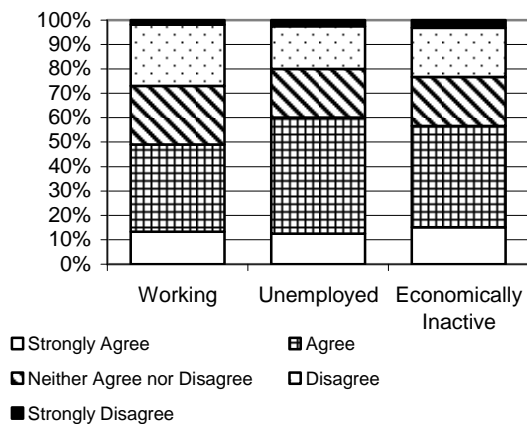


Figure 2.39 Would you say that you know...?



The working (78%) and the unemployed (66%) are more likely to feel safe walking alone in their area after dark than the economically inactive (54%) (Figure 2.40). The working (91%) are also more likely to travel outside of their area at least once a week than the unemployed (80%) and the economically inactive (64%) (Figure 2.41).

Figure 2.40 How safe do you feel walking alone in this area after dark?

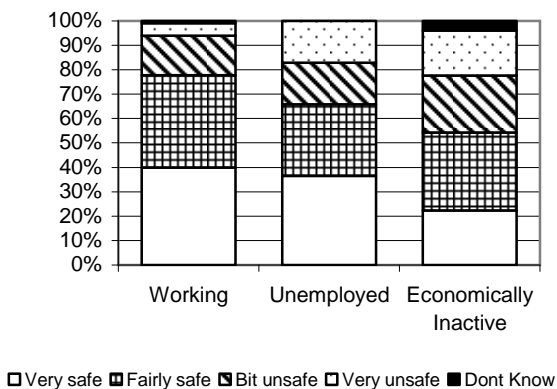
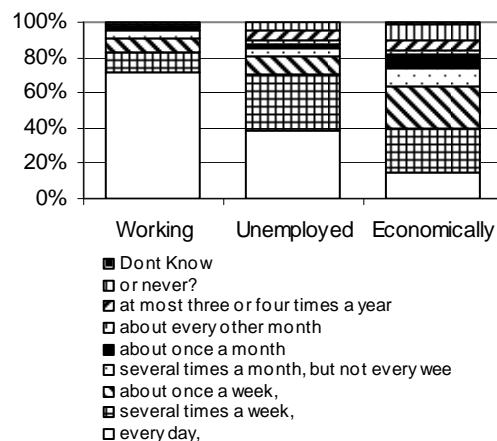


Figure 2.41 How often do you travel outside your area?



Working individuals (77%) are more confident that they know who to turn to for help if faced with a personal issue than the unemployed (49%) and the economically inactive (61%) (Figure 2.42). The working (54%) are more likely to belong to clubs and organisations than the economically inactive (43%) and the unemployed (37%) (Figure 2.43).

Figure 2.42 How confident are you that you know who to turn to for help if faced with personal issue?

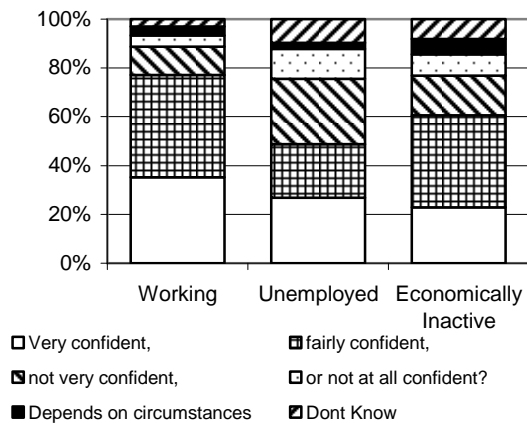
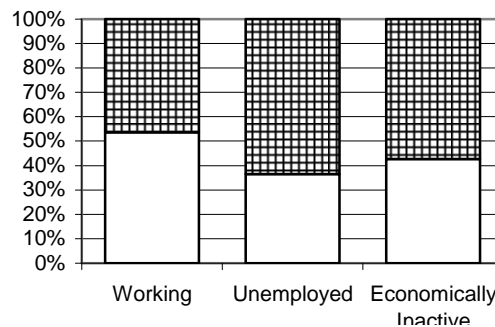


Figure 2.43 Do you belong to a club or organisation



The three labour market groups show similar levels of bonding social capital, working (89%), unemployed (71%) and economically inactive (84%) (Figure 2.44). The working (64%) are more likely to display stronger bridging social capital than the economically inactive (43%) and the unemployed (49%) (Figure 2.45).

Figure 2.44 Bonding by labour market activity

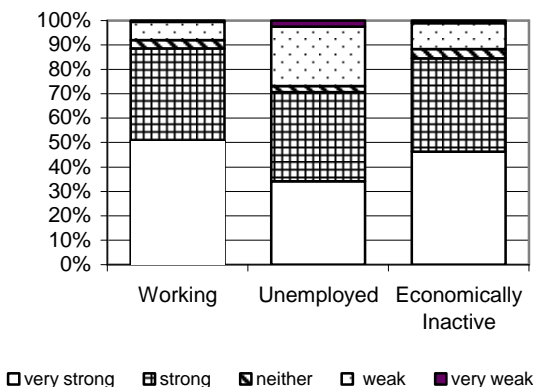
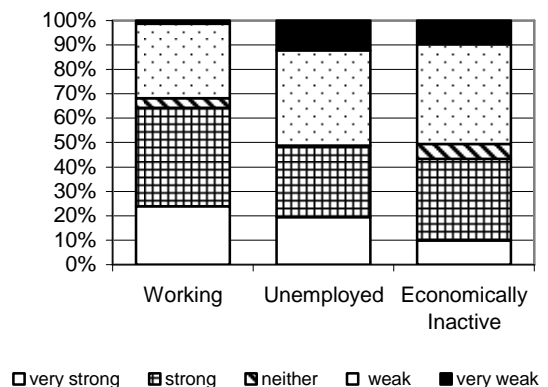


Figure 2.45 Bridging by labour market activity



The working (54%) are more likely to have stronger linking social capital than the unemployed (32%) and the economically inactive (42%) (Figure 2.46). Overall the working

(89%) are more likely to have stronger social capital compared to the economically inactive (81%) and the unemployed (63%) (Figure 2.47).

Figure 2.46 Linking by Labour Market activity

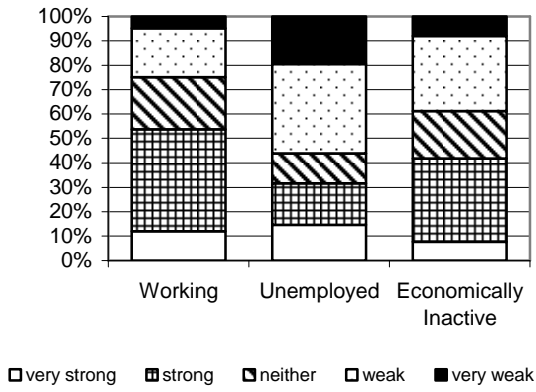
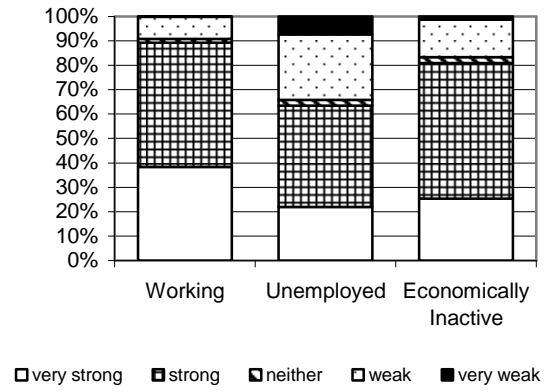


Figure 2.47 Overall Social Capital by Labour Market activity



2.8 Socio-economic group

People in lower socio-economic groups appear to bond more within their community than higher socio-economic groups. The unskilled manual group (62%) are more likely to know most or many of the people in their area than professionals (41%) and are more likely to agree (68%) that they live in a close tight knit community than professionals (37%) (Figures 2.48 & 2.49).

Figure 2.48 Would you say that you know?

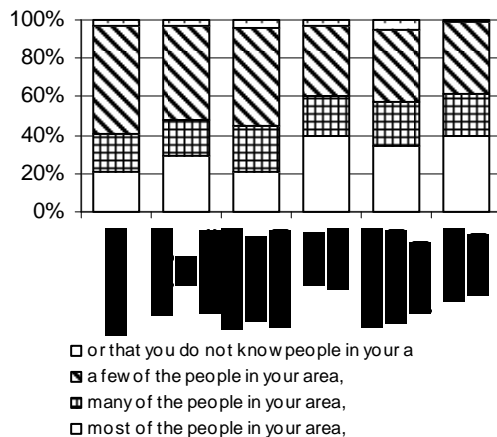
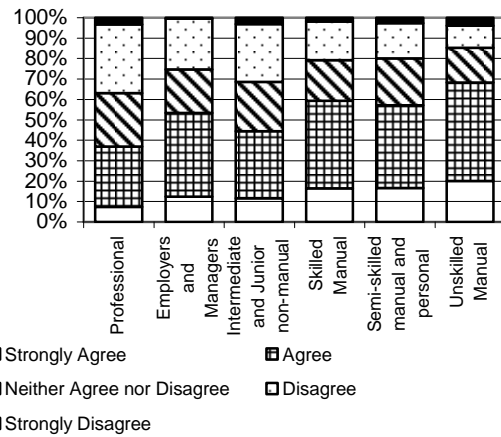
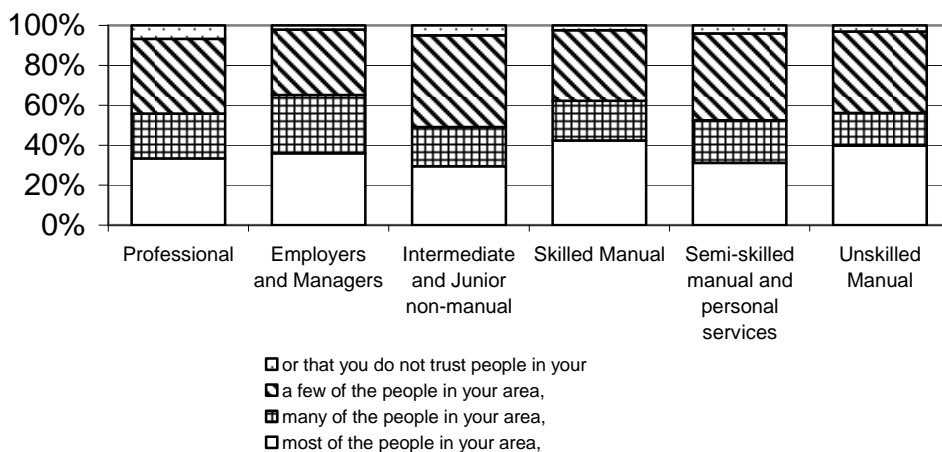


Figure 2.49 How much would you agree that this area is a close, tight knit community?



When asked about trusting people in their area employers and managers (65%) are more likely to agree that they trust people in their area compared to Intermediate and Junior Non-manual (49%) (Figure 2.50).

Figure 2.50 Would you say that you trust most people in your area?



Professionals (77%) are more likely to do a favour for a neighbour compared to the unskilled manual group (67%). Professionals (74%) are also more likely to have had a favour done for them by a neighbour than the unskilled manual group (63%) (Figures 2.51 & 2.52).

Figure 2.51 In the past 6 months, have you done a favour for a neighbour?

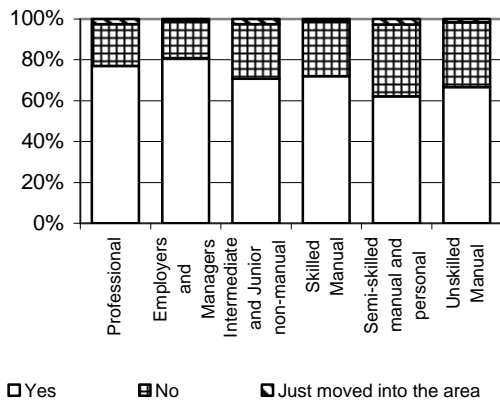
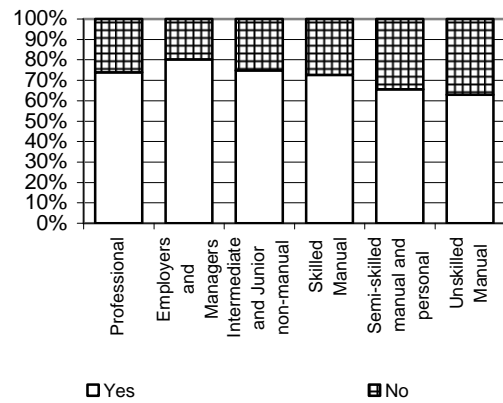
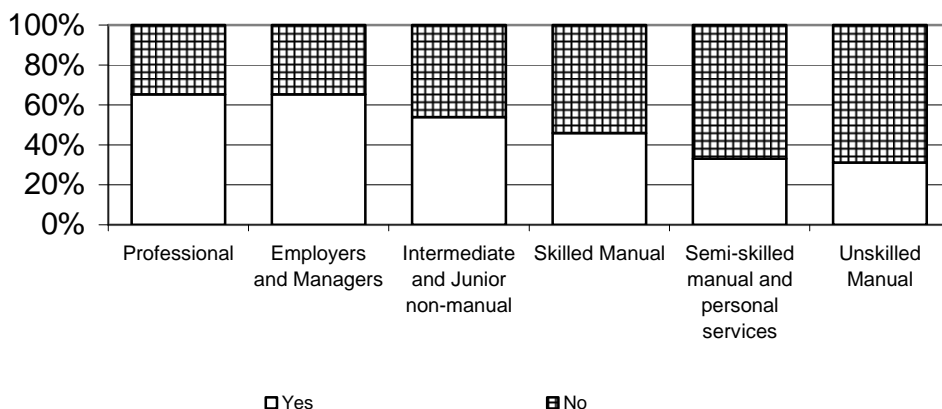


Figure 2.52 In the past 6 mths, have any of your neighbours done a favour for you?



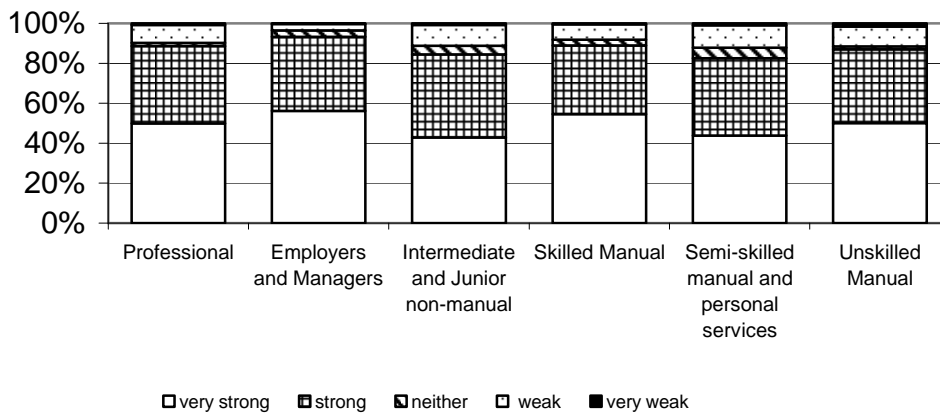
Higher socio-economic groups travel and socialise outside of their area more often than lower socio-economic groups. Professionals (81%) are more likely to travel outside of their area several times a week or more compared to the unskilled manual group (42%) (see Appendix 3 Table 3.57). Participation in an organisation is more common among professionals (65%) than the unskilled manual group (31%) (Figure 2.53).

Figure 2.53 Do you belong to a club or organisation



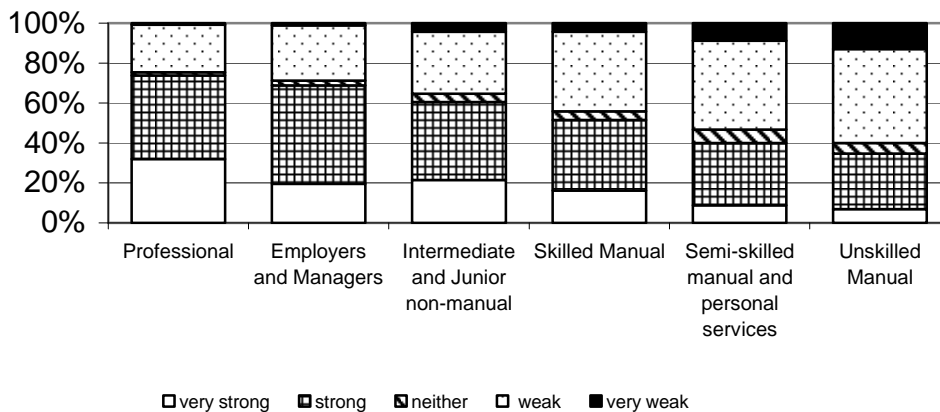
A higher proportion of the employers and managers group (56%) have very strong bonding than other socio-economic groups. Intermediate and Junior non-manual (43%) have the lowest proportion of individuals with very strong bonding (Figure 2.54).

Figure 2.54 Bonding by Socio-economic group



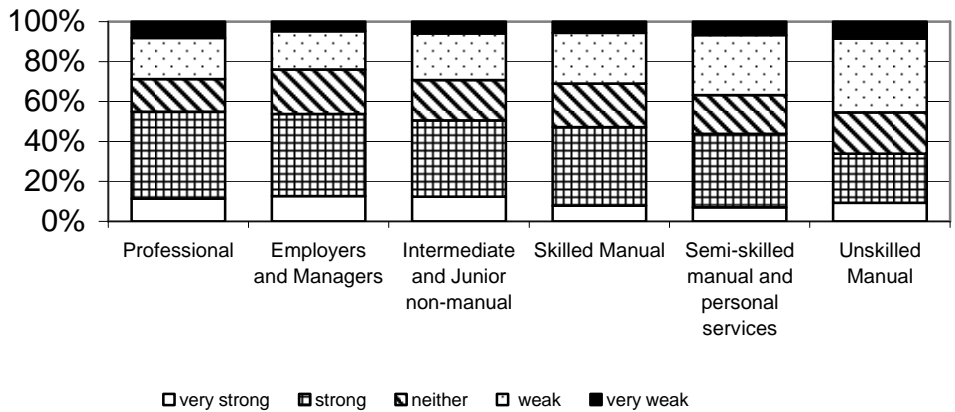
A higher proportion of professionals (32%) have very strong bridging than the other socio-economic groups. The unskilled manual group (7%) has the lowest proportion of individuals with very strong bridging (Figure 2.55).

Figure 2.55 Bridging by Socio-economic group



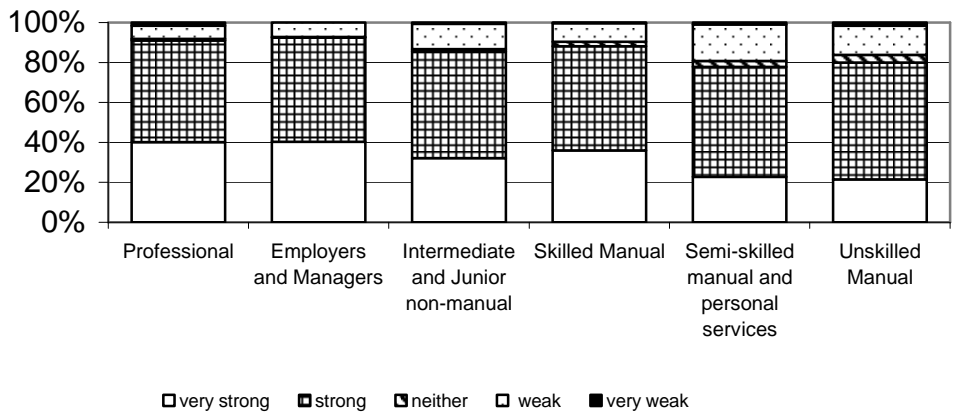
A higher proportion of professionals (55%) have very strong/strong linking than other socio-economic groups. The unskilled manual group (34%) has the lowest proportion of individuals with very strong/strong linking (Figure 2.56).

Figure 2.56 Linking by Socio-economic group



Overall professionals and employers and managers appear to have stronger social capital with the unskilled manual and semi-skilled manual and personal services group having the weakest. A higher proportion of professionals (91%) and employers and managers (92%) have very strong/strong social capital than the other socio-economic groups. The unskilled manual (80%) and the semi-skilled manual and personal services group (78%) have the lowest proportion of individuals with very strong/strong social capital (Figure 2.57).

Figure 2.57 Overall Social Capital by Socio-economic group



2.9 Area

People living in the west of Northern Ireland (NI) appear to bond more within their community than people in other areas of NI. People living in the west (67%) are more likely to know most or many of the people in their area than people living in the east of NI (45%) and people living in Belfast (46%) (Figure 2.58). People in the west (66%) are also more likely to agree that they live in a close tight knit community than people in Belfast (47%) and in the east of NI (45%) (Figures 2.59).

Figure 2.58 Would you say that you know?

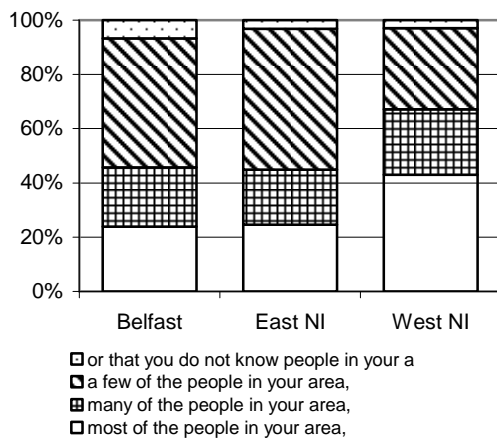
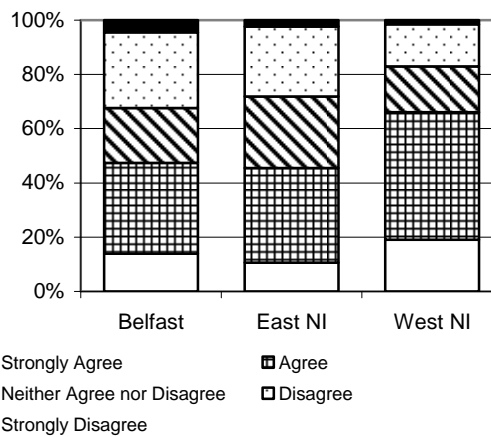


Figure 2.59 How much would you agree that this area is a close, tight knit community?



People living in the west (75%) are more likely to agree that their area is a place where people look after each other than people in Belfast (53%) and people in east of NI (60%) (Figure 2.60). People in the west of NI (71%) are also more likely to agree that people who live in their area trust one another than people in Belfast (46%) and people in east of NI (61%) (Figure 2.61).

Figure 2.60 How much would you agree that this is a place where people look after each other?

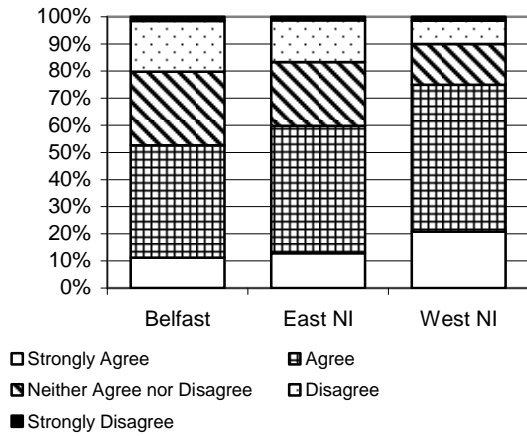
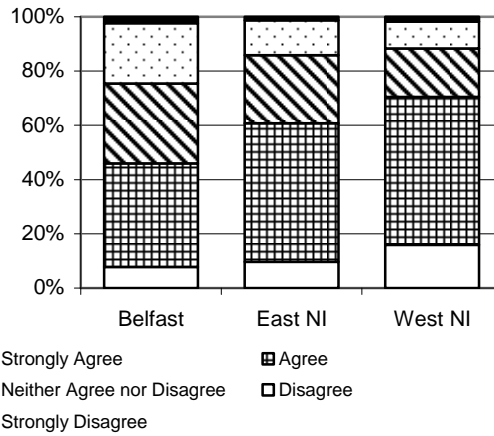


Figure 2.61 How much would you agree that most people who live in this area trust one another?



People living in the west and east of NI (71% and 66% respectively) are more likely to feel safer walking alone in their area after dark than people living in Belfast (57%) (Figure 2.62). While people in the east of NI (67%) are more likely to travel outside of their area several times a week than individuals living in Belfast (58%) and west of NI (58%) (Figure 2.63).

Figure 2.62 How safe do you feel walking alone in this area after dark?

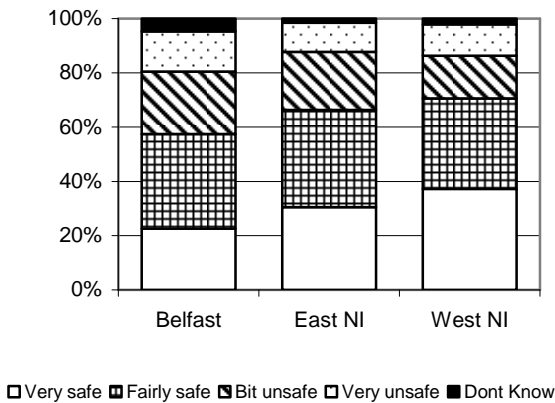
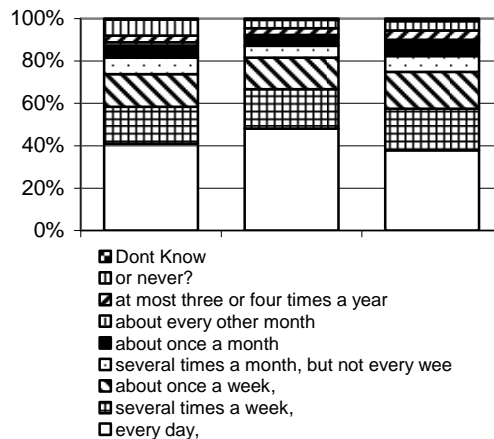


Figure 2.63 How often do you travel outside your area?



People who live in the west of NI (72%) are more likely to never travel to areas or through areas in which they feel less safe several times a week or more than people in the east of NI (59%) and in Belfast (50%) (Figure 2.64). People who live in the east of NI (57%) are

more likely to belong to a club or organisation than people who live in Belfast (40%) and those who live in west of NI (40%) (Figure 2.65).

Table 2.64 How often do you travel to areas or through areas in which you feel less safe?

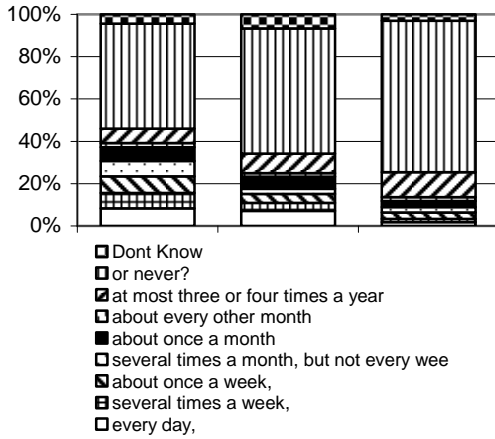
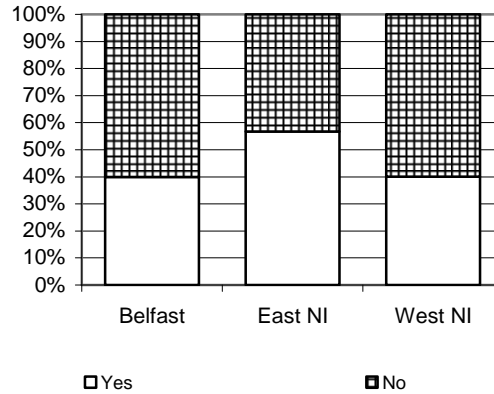


Table 2.65 Do you belong to a club or Organisation?



People living in the east (87%) and west (90%) of NI are more likely to display stronger bonding social capital than people living in Belfast (78%) (Figure 2.66). While people living in Belfast (54%) and people living in east NI (62%) are more likely to display stronger bridging than people living in west NI (42%) (Figure 2.67).

Table 2.66 Bonding social capital by area

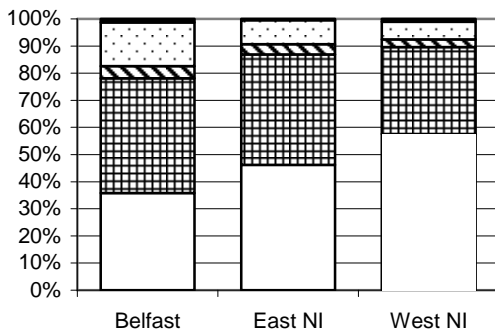
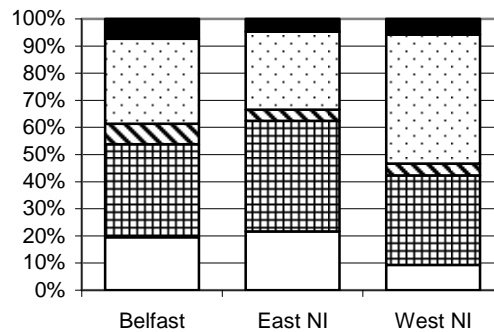
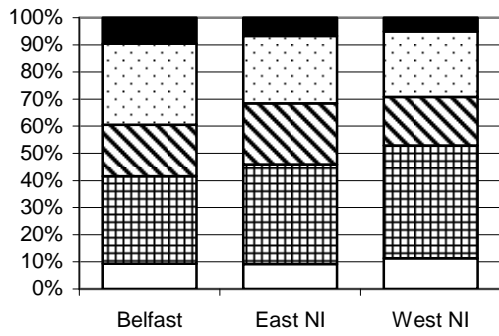


Table 2.67 Bridging social capital by area



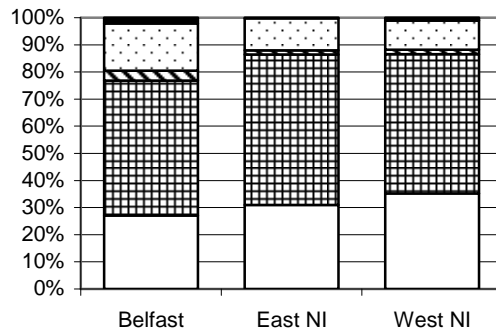
People living in the west (53%) and in the east (46%) of NI are more likely to display stronger linking than people living in Belfast (42%) (Figure 2.68). Overall people living in the east (86%) and in the west (87%) of NI are more likely to have stronger social capital compared to people living in Belfast (77%)(Figure 2.69).

Table 2.68 Linking social capital by area



very strong strong neither weak very weak

Table 2.69 Overall Social capital by area



very strong strong neither weak very weak

2.10 Limiting long standing illness

Individuals with a long-standing illness (56%) are more likely to agree that their area is a close, tight knit community than individuals with no long-standing illness (52%) (Figure 2.70). Individuals with a long-standing illness (65%) are more likely to agree that their area is a place where people look after each other than individuals with no long-standing illness (63%) (Figure 2.71).

Figure 2.70 How much would you agree that this area is a close, tight knit community ?

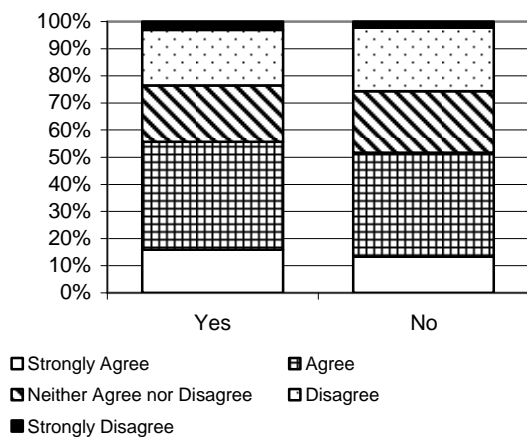
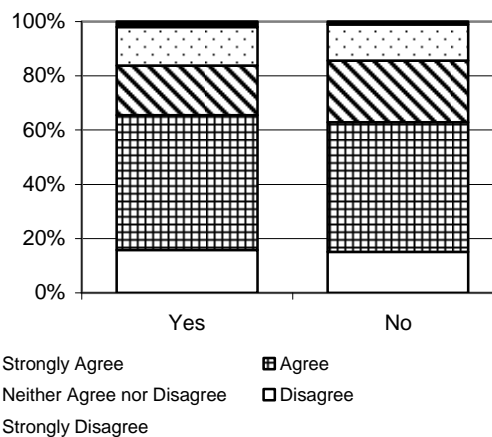


Figure 2.71 How much would you agree that this is a place where people look after each other?



Safety is more of a concern to individuals with a limiting long standing illness than others. Individuals with a limiting long standing illness (21%) are more likely to feel very unsafe walking alone in their area after dark than individuals with no limiting long standing illness (8%) (Figure 2.72). Individuals with a limiting long standing illness (71%) are also more likely to have never travelled to areas or through areas in which they feel less safe than individuals with no limiting long standing illness (58%)(Figure 2.73).

Figure 2.72 How safe do you feel walking alone in this area after dark?

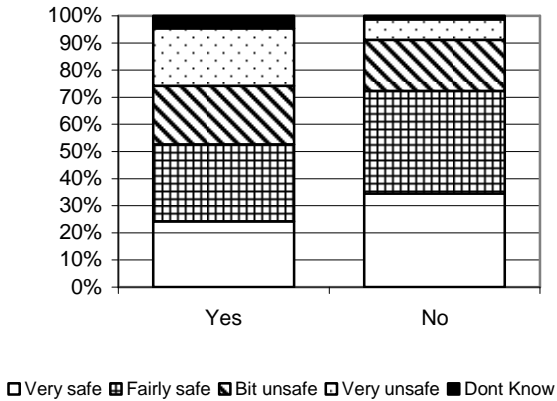
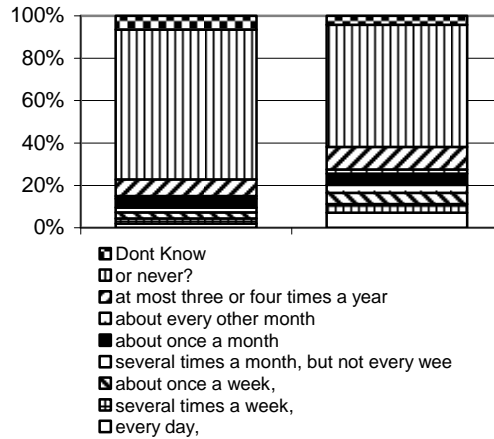


Figure 2.73 How often do you travel to areas or through areas in which you feel less safe?



Individuals with no limiting long standing illness (72%) are more likely to travel outside of their area several times a week or more than individuals with a limiting long standing illness (40%) (Figure 2.74). Individuals with no limiting long standing illness (52%) are also more likely to belong to a club or organisation than individuals with a limiting long standing illness (40%) (Figure 2.75).

Figure 2.74 How often do you travel outside your area?

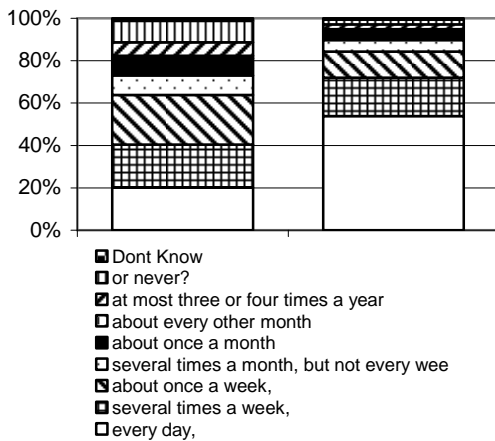
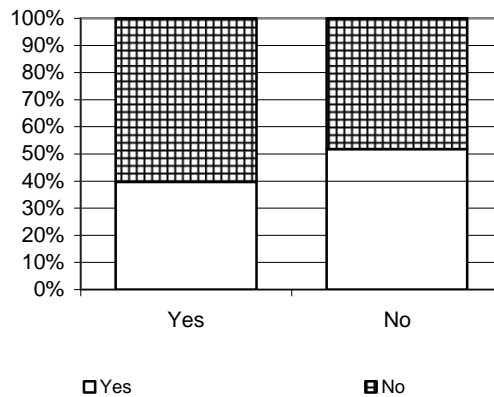


Figure 2.75 Do you belong to a club or organisation?



Individuals with no limiting long standing illness (88%) are more likely to display stronger bonding than individuals with limiting long standing illness (82%). Individuals with no

limiting long standing illness (60%) are more likely to display stronger bridging than individuals with a limiting long standing illness (40%) (Figure 2.76).

Figure 2.76 Bonding social capital by limiting long standing illness

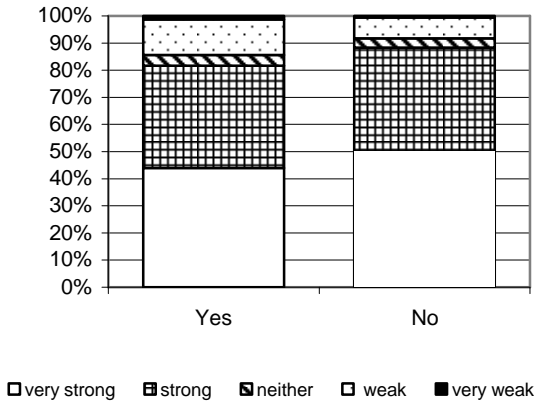
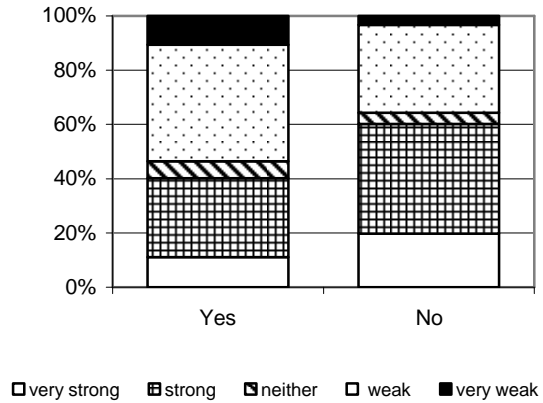


Figure 2.77 Bridging social capital by limiting long standing illness



Individuals with no limiting long standing illness (52%) are more likely to display stronger linking than individuals with a limiting long standing illness (38%). Individuals with no limiting long standing illness (88%) are more likely to display stronger overall social capital than individuals with limiting long standing illness (78%).

Figure 2.76 Linking social capital by limiting long standing illness

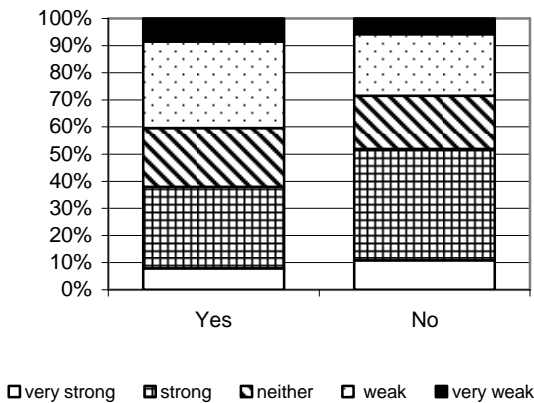
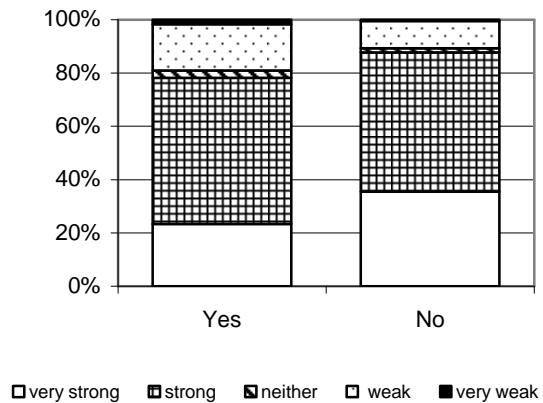


Figure 2.77 Overall social capital by limiting long standing illness



2.11 Household type

Households with children are more likely to know people in their area than households with no children. Married or cohabiting couples with children (58%) and lone parents (55%) are more likely to know most or many of the people in their area compared to single person households (49%) and married or cohabiting couples with no children (51%) (Figure 2.77).

Figure 2.77 Would you say that you know most of the people in your area?

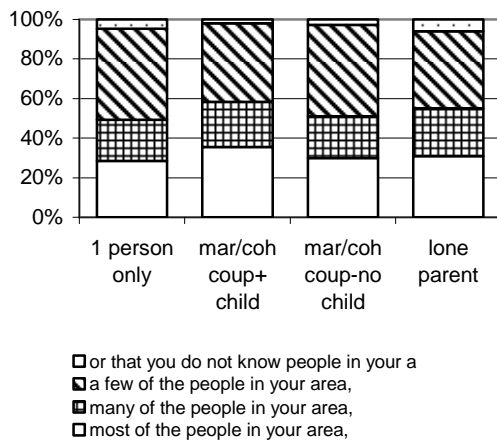
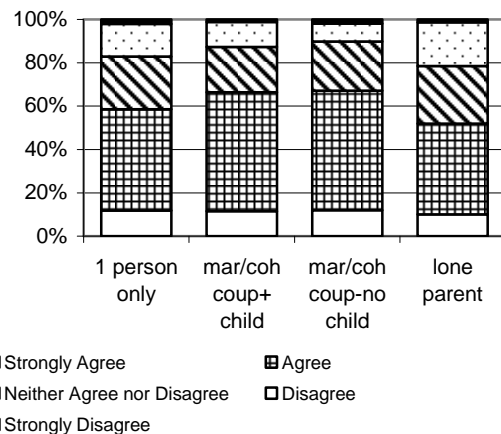


Figure 2.78 How much would you agree that most people who live in this area trust one another?



Trust appears to be an issue with lone parents. Lone parents (52%) are least likely to agree or strongly agree that most people who live in their area trust one another compared to couples with no children (67%), couples with children (66%) and one person households (59%) (Figure 2.78). Lone parents (50%) and single person households (50%) are least likely to trust most or many of the people in their area compared to couples with no children (62%) and couples with children (63%) (Figure 2.79).

Figure 2.79 Would you say that you trust most people in your area?

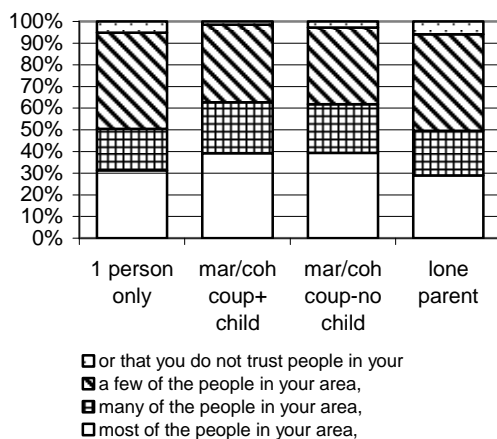
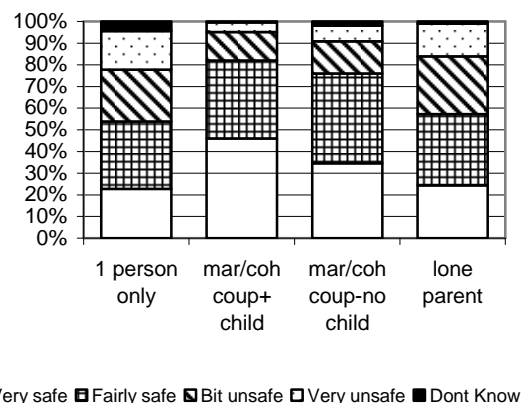


Figure 2.80 How safe do you feel walking alone in this area after dark?



Couples with children (82%) and couples with no children (76%) are more likely to feel very or fairly safe walking alone in areas after dark compared to lone parents (57%) and single person households (54%). While single person households (67%), lone parents (64%) and couples with no children (64%) are more likely to never travel through areas in which they feel less safe than couples with children (51%).

Figure 2.81 How often do you travel to areas or through areas in which you feel less safe?

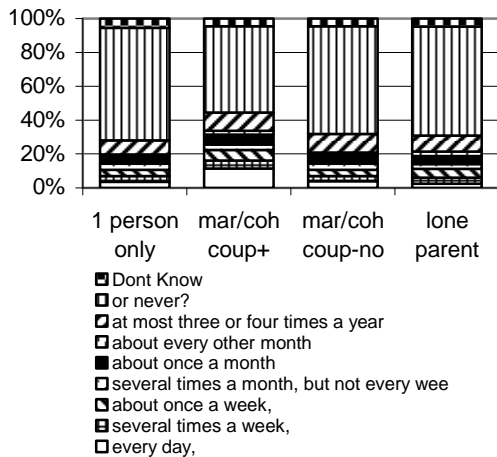
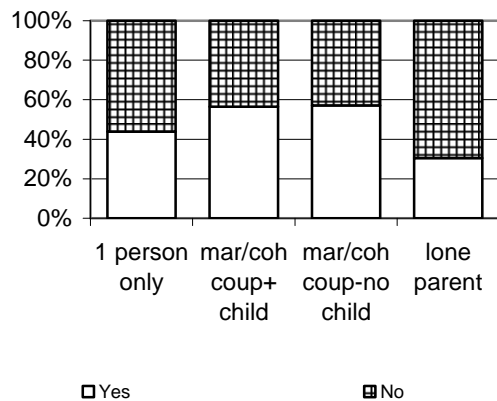


Figure 2.82 Do you belong to a club or organisation?



Couples with children (56%) and couples with no children (57%) are more likely to belong to clubs or organisations than single person households (44%) and lone parents (31%).

Couples with no children (92%) and couples with children (92%) display stronger bonding than single person households (82%) and lone parents (79%). Couples with children (65%) and couples with no children (63%) are more likely to display stronger bridging than lone parents (39%) and one person households (47%).

Figure 2.83 Bonding by household type

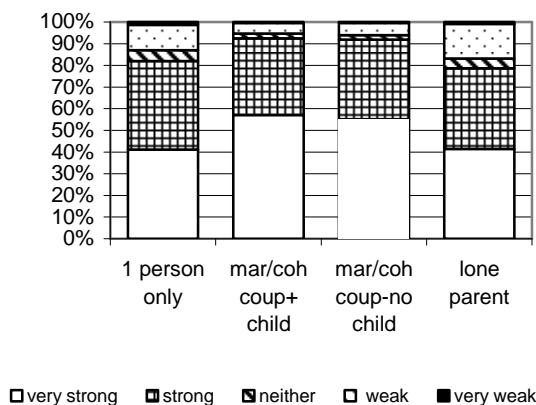
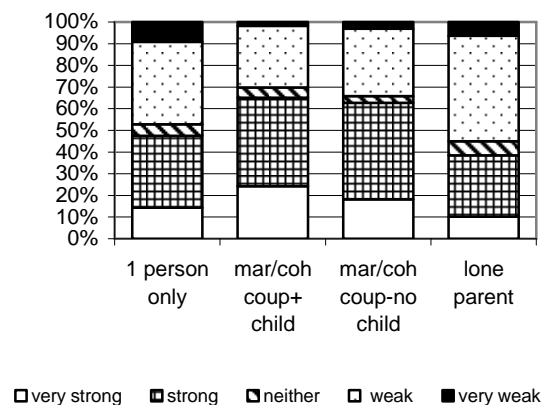


Figure 2.84 Bridging by household type



Couples with children (56%) are more likely to display stronger linking than couples with no children (49%), lone parents (47%) and one person households (42%). Couples with no children (92%) and couples with children (93%) are more likely to display stronger overall social capital than one person households (79%) and lone parents (76%).

Figure 2.85 Linking by household type

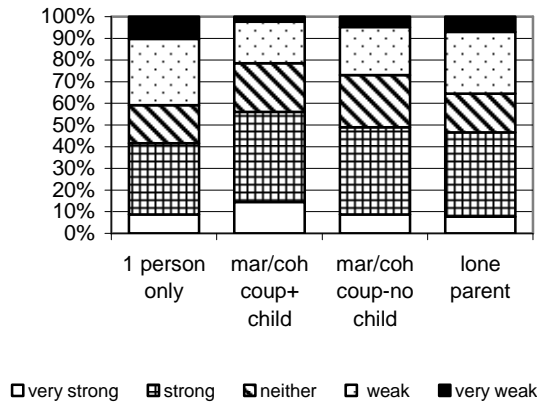
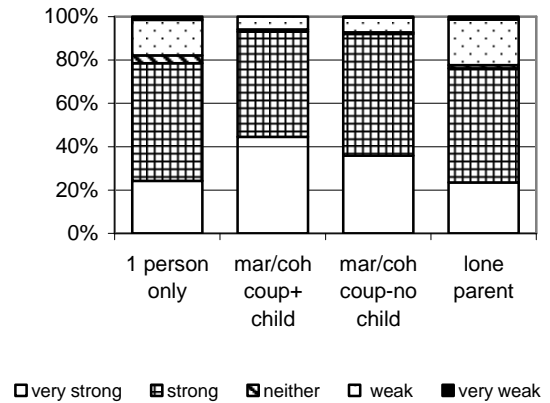


Figure 2.86 Overall social capital by household



Section 3 Comparisons with 03/04 Social Capital Module

Each of the analyses by socio-economic characteristics for 05/06, were compared with results for 03/04 to test for any significant differences in percentages of individuals with bonding, bridging, linking and overall social capital. Any significant differences have been calculated at the 5% level of probability. At this level of significance, we can be 95% sure that any significant changes identified are true of the population as a whole. However, with effectively only two data points comprising 2003/04 and 2005/06, caution should be exercised in interpreting any significant changes identified, in the extent to which they reliably demonstrate or indicate any trend in the data. Robust identification of trends will only be possible once a number of sweeps of data are available and the intention is to re-run this module of questions periodically.

Age

Within the older age groups, 40-49, 50-59, and 60+ there has been a significant increase having strong/very strong linking. The percentage of 40-49 year olds with strong/very strong linking has increased significantly from 44% in 03/04 to 52% 05/06, the percentage of 50-59 year olds has increased significantly from 44% in 03/04 to 51% in 05/06, and the percentage of 60 + year olds has increased significantly from 36% in 03/04 to 44% 05/06.

Gender

Both males and females have shown a significant increase in the percentage of those with strong/very strong linking over the time period. The percentage of males with strong/very strong linking has increased from 44% in 03/04 to 50% in 05/06, while the percentage of females has increased from 38% in 03/04 to 44% in 05/06.

Marital status

The percentage of couples with strong/very strong bridging has increased significantly from 59% in 03/04 to 64% 05/06. Couples have also shown an increase in the percentage of those with strong/very strong linking from 44% in 03/04 to 53% in 05/06. Single individuals have shown an increase in strong/very strong linking from 36% in 03/04 to 42% in 05/06. With regards to overall social capital couples displaying strong/very strong social capital has increased significantly, from 89% in 03/04 to 93% in 05/06.

Religion

The percentage of Roman Catholics with very strong bonding has increased significantly from 46% in 03/04 to 51% in 05/06. The percentage of Roman Catholics with strong linking has also increased significantly from 30% in 03/04 to 39% in 05/06. Protestants with strong linking has increased significantly over the time period from 31% to 38%. With regards to overall social capital, the proportion of Roman Catholics with very strong social capital has increased significantly, from 24% in 03/04 to 33% in 05/06.

Labour Market activity

The percentage of those working exhibiting very strong bonding social capital has increased significantly from 45% in 03/04 to 51% in 05/06. There has been a significant increase in those working with strong bonding social capital from 34% in 03/04 to 42% in 05/06, while there has been a significant decrease in the percentage of those working with weak bonding (25% in 03/04 to 20% in 05/06). There has been a significant increase in the percentage of those unemployed who have very weak linking social capital from 4% in 03/04 to 20% in 05/06. The percentage of the economically inactive who have strong linking social capital has increased significantly from 27% in 03/04 to 34% in 05/06. With regards to overall social capital, the proportion of those working reporting very strong social capital has increased significantly from 30% in 03/04 to 38% in 05/06.

Education

There has been a significant decrease in the percentage of those with no qualifications having weak linking social capital from 33% in 03/04 to 26% in 05/06. Conversely there has been a significant increase in the percentage of those with no qualifications having strong linking social capital (27% in 03/04 to 36% in 05/06). There has been a significant decrease in the percentage of those with higher qualifications having weak linking social capital from 24% in 03/04 to 17% in 05/06. Conversely there has been a significant increase in the percentage of those with higher qualifications having strong linking social capital (31% in 03/04 to 42% in 05/06).

Socio-economic group

There has been a significant decrease in the percentage of professionals with very strong bridging social capital, from 45% in 03/04 to 32% in 05/06. Within the semi-skilled group

there has been a significant increase in the percentage of those with strong linking social capital, from 23% on 03/04 to 37% in 05/06.

Area

There has been a significant decrease in the percentage of those in the East of Northern Ireland with weak bridging social capital, from 33% in 03/04 to 29% in 05/06. In Belfast there has been a significant increase in the percentage of those with strong / very strong linking social capital, from 33% in 03/04 to 42% in 05/06. In the West of Northern Ireland there has been a significant increase in the percentage of those with strong linking (33% in 03/04 to 41% in 05/06) and a significant decrease in the percentage of those with weak linking social capital (30% in 03/04 to 24% in 05/06).

Limiting long standing illness

There has been a significant increase in the percentage of those with a limiting illness who have weak bonding social capital, from 9% in 03/04 to 13% in 05/06. There has been a significant decrease in the percentage of those with no limiting illness having weak linking social capital from 28% in 03/04 to 23% in 05/06. Conversely there has been a significant increase in the percentage of those with no limiting illness having strong linking social capital (28% in 03/04 to 33% in 05/06).

Household type

There has been a significant decrease in the percentage of those married/cohabiting with children having weak linking social capital (27% in 03/04 and 19% in 05/06). Conversely there has been a significant increase in the percentage of those married/cohabiting with children having strong linking social capital (32% in 03/04 to 42% in 05/06). The percentage of those married/cohabiting with no children having strong/very strong linking social capital has increased significantly from 40% in 03/04 to 49% in 05/06. There has also been a significant increase in the percentage of lone parents having strong/very strong linking social capital from 37% in 03/04 to 47% in 05/06.

Overall the majority of the significant differences have occurred in relation to linking social capital. Linking social capital is concerned with the quality of relationships between communities and decision makers (local government, service providers, funders etc).

Section 4 Summary

Socio-Economic Group

One of the most important findings of the survey is the interaction between forms of social capital and class. People in lower socio-economic groups display more bonding social capital than do professionals, while professionals appear to display more bridging and linking social capital. Cairns et al (2004), for example, found that higher socio-economic status was found to be associated with higher levels of social capital.

In relation to responses to specific questionnaire items, individuals in the unskilled manual group are more likely to know more people in their area and to view their area as a close-tight knit community than individuals in the professional group. However, professionals are more likely to do a favour for a neighbour and to have had a favour done for them by a neighbour than lower socio-economic groups. Higher socio-economic groups travel and socialise outside of their area more often than lower socio-economic groups, and they are more likely to travel outside of their area and to participate in an organisation or club. These findings are reflected in those of the Great Britain General Household Survey

(GHS) 2000/01 survey, which also found that people in the manual group were more likely to speak to and know more people in their area than people in the non-manual group.

Age

The results of the survey have shown that age is clearly related to levels of social capital. In a society where it is widely reported that older people have a significant fear of crime it was encouraging that a large number of older people trust most people in their area and that a large number of older people have had a favour done for them by a neighbour in the past 6 months.

The GHS 2000/01 also reported that the level of trust in neighbours increased consistently by age group from just below 40% for 16 to 29 year olds to over 75% for those aged 70 and over.

Overall from the GHS 2000/01, age was the only individual level demographic factor to be closely associated with the majority of the social capital indicators. The results of our survey were similar. Older people exhibit stronger bonding social capital than younger individuals. This may be due to having a wider network of family or friends in the community and from living in the community for longer. However, younger people exhibit more bridging social capital and this may be due to younger individuals being more mobile. Younger individuals are also more likely to be economically active and working often takes individuals out of their local community. Individuals who work in mixed environments are more able to develop cross-community relations and networks from outside their own community background.

The Office for National Statistics had included a module of questions in their Omnibus survey that specifically designed to evaluate the nature of the social capital experience of young people aged 16 to 24. They found that young people were more likely to participate in informal social activities and to have larger social support networks than people aged 25 and over. However, young people (aged 16-24) were less likely to participate in social, civic and voluntary activities (Deviren and Babb, 2005).

Gender

Males appear to have stronger bonding, bridging and linking social capital than females. In relation to responses to individual questionnaire items, males felt safer walking alone after dark and were more likely to be a member of an organisation or club than females.

In the GHS 2000/01, sex was the most significant independent factor in terms of how safe people felt walking after dark with men being five times more likely to feel safe than women. In the GB survey no further differences were found between males and females.

Marital Status

Individuals in a couple relationship have stronger bonding, bridging and linking social capital than single individuals. In relation to responses to individual questionnaire items couples were more likely to ask people to 'keep an eye' on their property, trust most people in their area, to do favours for neighbours, to feel safer walking alone after dark, to travel outside of their area, belong to a club or organisation and to take action in an attempt to solve local problems that were affecting people in their area.

The GHS also found that married people were more likely to belong to a club or organisation but that marital status interacts with many other socio-economic and demographic variables (in particular age). However the GB survey found no real significant affect of marital status on social capital.

Religion

The results indicate that Protestants appear to have stronger bridging social capital than Roman Catholics. Murtagh (2002) found no difference between the two communities in relation to bridging social capital. In addition, Murtagh found that a high proportion of activity within both religions is conducted in mixed religion settings but that this takes place in selective areas, activities, social classes and age groups.

Religious affiliation appears to have little effect on bonding, linking and overall social capital. There were a few minor differences in relation to individual questions. These differences indicated that Roman Catholics may participate more within their local community. Roman Catholics are more likely to know more people in their area and are more likely to describe their area as a close tight knit community. Roman Catholics are also more likely to believe that by working together people can influence decisions

affecting their area. Protestants are more likely to be involved in an organisation or club. Previous research (Murtagh, 2002; Cairns et al, 2003) also found little difference between Roman Catholics and Protestants in relation to social capital. However, Murtagh did find that Protestants are more likely to participate in clubs, societies and church based activities than Roman Catholics.

Education

The survey has shown that an individual's educational level affects social capital. Individuals with higher qualifications display stronger bridging and linking social capital. Little difference was found between individuals with different qualifications in relation to bonding social capital. In relation to responses to specific questionnaire items, individuals with no qualifications appear to participate and bond more within their own community. Individuals with no qualifications are more likely to know many people in their area and are more likely to agree that their area is a close tight knit community than individuals with higher and other qualifications. Individuals with no qualifications are least likely to travel to areas which they feel less safe in. However, individuals with higher qualifications appear to travel and socialise more frequently outside of their community. Individuals with higher qualifications are more likely to be involved in a club or organisation and are more likely to travel outside of their area several times a week than individuals without degrees. Individuals with higher and other qualifications are also more confident that if there was an issue that affected them personally they would know who to turn to for help.

The GHS also found that those with higher educational levels were more likely to feel they could influence decisions in their area and more likely to feel safer walking alone after dark. However, the GHS found that individuals with higher educational levels were more likely to receive favours from neighbours and have a higher neighbourliness and reciprocity score.

Economic Activity

The survey has shown that an individual's current economic activity affects social capital. Individuals who are working display stronger bridging, linking and overall social capital. Little difference was found between the three labour market groups (employed, unemployed, and economically inactive) in terms of bonding social capital.

The GHS survey found that individuals who are in employment tend to have higher levels of social capital than those unemployed. In relation to responses to specific questionnaire items, the economically inactive and the unemployed appear to bond more within their area. The economically inactive and the unemployed are more likely to know many people in their area and are more likely to agree that their area is a close tight knit community than individuals who are in employment. The economically inactive are the least likely to feel safe walking alone in their area after dark. Individuals in employment are more likely to be involved in a club or organisation and are more likely to travel outside of their area several times a week than the unemployed and economically inactive. Individuals in employment are also more confident that if there was an issue that affected them personally they would know who to turn to for help.

The GB survey found that those in employment were most likely to feel safer walking alone after dark in their local area than economically inactive people.

Area

Area appears to affect social capital. People living in the west and east of NI appear to have stronger bonding, linking and overall social capital than people living in Belfast. People living in Belfast and the east of NI appear to have stronger bridging social capital. Cairns et al (2003) found that rural dwellers scored higher on social capital than urban dwellers.

In relation to responses to individual questionnaire items, people in the west appear to bond more within their area, they are more likely to agree that their area is a place where people look after each other, that most people trust one another, that they know most people and that their area is a close tight-knit community. People in the west and east of NI feel safer walking alone in their areas after dark than people in Belfast. People in the east of NI are more likely to travel outside of their area and belong to a club or organisation.

The GHS also found a relationship between geographical area and social capital with people living in London being at the lower end of social capital scale. The GHS also found that people in England were less likely than those in Wales/Scotland to speak to, or trust, their neighbours.

Limiting Long standing illness

Individuals with no limiting long standing illness are more likely to display stronger bridging social capital. Having a limiting long standing illness appears to have little effect on bonding, linking and overall social capital.

In relation to responses to individual questionnaire items, individuals with limiting long standing illness appear to bond more within their community. Individuals with limiting long standing illness are more likely to agree that their area is a close, tight-knit community and that people look after each other than individuals with no limiting long standing illness. However safety is more of a concern to individuals with limiting long standing illness as they are more likely to feel unsafe walking alone in areas after dark and are more likely to have never travelled through areas in which they feel less safe. Individuals without a limiting long standing illness are more likely to socialise with others, are more likely to travel outside their area several times a week and to belong to a club or organisation.

Household type

Couple or cohabiting households with or without children display stronger bonding, bridging and overall social capital than one person households and lone parent households. Couples or cohabiting households with children display stronger linking than other households.

In relation to responses to individual questionnaire items, households with children are more likely to know people in their area. Trust appears to be an issue with lone parents as they are least likely to agree that most people who live in their area trust one another and they are least likely to trust people in their area. Couples or cohabiting households with and without children are more likely to feel safe walking alone in areas after dark and belong to clubs/organisations than other households. Households without children are more likely to never travel through areas in which they feel less safe.

The GHS found that lone parents and single person households were the least likely to feel safe walking alone at night. Results also showed that being a lone parent was associated with less likelihood of enjoying living in an area.

Comparison with 03/04 Social Capital Module

The most frequent significant differences within the social and economic groups examined between 03/04 and 05/06 have reflected a significant increase of individuals with strong/very strong linking. This may indicate that individuals within Northern Ireland feel that they can personally influence decisions that are made that affect them personally and that affect their area and Northern Ireland as a whole.

Differences between socio-economic characteristics have been found in relation to the individual questions, bonding, bridging, linking and social capital. It is highly likely that these differences are highly correlated with each other. For example, findings in relation to socio-economic group will be highly correlated to findings for education and economic activity. Only detailed statistical analyses can attempt to unravel the relative importance of each of these characteristics, in relation to social capital, and how they may change over time.

With the CHS as the vehicle for asking these questions, we can only examine social capital at a regional (NI) level, although it has been possible to conduct some limited intra-regional analyses.

However, it is entirely possible that differences in the patterns of social capital may be found at a small geographic and at a local community level. Nevertheless, the results reported here has given an insight into some of those factors which may be most important for social capital within Northern Ireland at both a regional and intra-regional level.

Bibliography

Australian Bureau of Statistics (2000) *Measuring Social Capital: current collections and future directions*.

Cairns, E., Van Til, J. and Williamson, A. (2003) *Social Capital, Collectivism-Individualism and Community Background in NI*.

Cote, S. and Healy, T. (2001) *The Well Being of nations. The role of human and social capital*. Organisation for economic Co-operation and Development, Paris.

Deviren, F. and Babb, P. (2005) *Young People and Social Capital*, Office for National Statistics.

Hanifan, L.J. (1916) 'The rural school community centre', *Annals of the American Academy of Political and Social Science* 67: 130-138.

Murtagh, B. (2002) *Social Activity and Interaction in NI*, NI Life and Times Survey research update 10.

Putnam, R. (1993) *Making democracy working: civic traditions in modern Italy*, Princeton University Press: New Jersey.

Putnam, R.D. (2000) *Bowling alone. The collapse and revival of American community*, New York: Simon and Schuster.

Woolcock, M. (2001) The place of Social Capital in Understanding Social and Economic outcomes, *ISUMA Canadian Journal of Policy Research* 2 (10): 11-17.

Appendix 1- Methodology

This aggregated method was used to aid the analyses of the data. A score given to each of the three strands of social capital is advantageous to understanding the broad trends in the data. This was carried out through a basic method for ease of use. As far as was possible each question was given equal weighting and the scores for each question added together. The outcome, therefore, is a scale which scores the individual on the extent of their social capital within the three strands, bonding, bridging and linking and an overall social capital score for each individual.

BONDING

The following questions were all included in giving an overall score for Bonding.

- 1 How much would you agree that this area is a close tight knit community?
- 2 How much would you agree that this area is a friendly place to live?
- 3 How much would you agree that this is a place where people look after each other?
- 4 How much would you agree that most people who live in this area trust one another?
- 5 How much would you agree that you often see strangers in the area?
- 6 How much do you agree you would be happy asking people to keep an eye on house/property?

All above (1-6)

- | | |
|-------------------------------|----------------------|
| 1. Strongly agree | 5. Strongly Disagree |
| 2. Agree | |
| 3. Neither Agree nor Disagree | |
| 4. Disagree | |

- 7 Would you say that you trust...
1. most of the people in your area,
 2. many of the people in your area,
 3. a few of the people in your area,
 4. or that you do not trust people in your area?

8 How safe do you feel walking alone in this area during the daytime?

9 How safe do you feel walking alone in this area after dark?

All above (8-9)

1. Very safe
2. Fairly safe
3. Bit unsafe
4. Very unsafe
5. Don't know

10 In the past 6 months, have you done a favour for a neighbour?

1. Yes
2. No
3. Just moved into the area

11 In the past 6 months, have any of your neighbours done a favour for you?

1. Yes
2. No

BRIDGING

The following questions were all included in giving an overall score for Bridging.

1. Are you involved in any of the following types of organisations?
 1. Social clubs,
 2. Sports/ hobbies clubs,
 3. associations,
 4. religious groups,
 5. other type of organisation,
 6. or none?
 7. Don't know

2. And how often do you attend these organisations...
 1. every day
 2. several times a week
 3. about once a week
 4. several times a month, but not every week
 5. about once a month
 6. about every other month
 7. at most three or four times year
 8. or never?
 9. Don't Know

3. How often do you travel outside of your area?
 1. every day
 2. several times a week
 3. about once a week
 4. several times a month, but not every week
 5. about once a month
 6. about every other month
 7. at most three or four times year
 8. or never?
 9. Don't Know

4. And how often do you travel to areas or through areas in which you feel less safe?
 1. every day
 2. several times a week
 3. about once a week
 4. several times a month, but not every week
 5. about once a month
 6. about every other month
 7. at most three or four times year
 8. or never?
 9. Don't Know

LINKING

The following questions were all included in giving an overall score for Linking.

1. If you were faced with an issue that affected you personally (such as noisy neighbours, building works, or littering) how confident are you that you would know who to turn to for help?
 1. very confident
 2. fairly confident
 3. not very confident
 4. or not at all confident?
 5. Depends on circumstances

2. How strongly do you feel that you can influence decisions that affect your area?
 1. Strongly agree
 2. Agree
 3. Neither Agree nor disagree
 4. Disagree
 5. Strongly disagree

3. In last 12 months, have you taken any of the following actions in an attempt to solve a local problem affecting people in your area?
 1. Written to a local newspaper
 2. Contacted the appropriate organisation to deal with the problem, e.g. the council
 3. Contacted a local councillor or MP.
 4. Attended a public meeting or area forum to discuss local issues.
 5. Attended a tenants or local residents group.
 6. Attended a protest meeting or joined an action group.
 7. Helped organise a petition on a Local issue.
 8. Thought about the problem but did not do anything about it.
 9. none of these things.

4. Finally to what extent do you agree/disagree that by working together, people in your area can influence decisions affecting the area.

- | | |
|-------------------------------|----------------------|
| 1. Strongly agree | 5. Strongly disagree |
| 2. Agree | |
| 3. Neither Agree nor disagree | |
| 4. Disagree | |

Method

Each answer to a question is allocated a value of +1, 0 or -1. Except for bridging a few questions were also allocated values of +0.5 or -0.5 These values for each question are summed to give a bridging, bonding and linking total. For bonding, the overall scores were grouped as follows:

| | |
|-------------|-----------|
| Very Strong | 7 to 11 |
| Strong | 1 to 6 |
| Neither | 0 |
| Weak | -1 to -6 |
| Very Weak | -7 to -11 |

For bridging, the overall scores were grouped as follows

| | |
|-------------|------------|
| Very Strong | 2.5 to 4 |
| Strong | 0.5 to 2 |
| Neither | 0 |
| Weak | -0.5 to -2 |
| Very Weak | -2.5 to -4 |

For linking, the overall scores were grouped as follows

| | |
|-------------|----------|
| Very Strong | 3 to 4 |
| Strong | 1 to 2 |
| Neither | 0 |
| Weak | -1 to -2 |
| Very Weak | -3 to -4 |

The linking, bonding and bridging scores were summed together to give an overall Social Capital Score. The overall social capital scores were grouped as follows.

| | |
|-------------|--------------|
| Very Strong | 10 to 19 |
| Strong | 0.5 to 9.5 |
| Neither | 0 |
| Weak | -0.5 to -9.5 |
| Very Weak | -10 to -19 |

Appendix 2- Item- by-item response patterns

The item-by-item response patterns for the social capital questions are shown below.

| Item | A street | A collection of streets | A housing estate or housing development | A suburb | A village | A townland | A town | Something else | Don't know |
|---|----------|-------------------------|---|----------|-----------|------------|--------|----------------|------------|
| How would you define the area in which you live | 12.8 | 11.8 | 31.6 | 9.3 | 9.4 | 16.0 | 7.4 | 1.5 | 0.3 |

| Item | Most of the people in your area | Many of the people in your area | A few of the people in your area | Or that you do not know people in your area |
|-----------------------------|---------------------------------|---------------------------------|----------------------------------|---|
| Would you say that you know | 30.8 | 21.9 | 43.5 | 3.8 |

| Item | 0-5 minutes | 6-10 minutes | 11-15 minutes | 16-20 minutes | More than 20 minutes | Don't know |
|---|------------------|---------------------|---------------------|---------------|----------------------|------------|
| How long a walk do you think it would take you to move outside of your area | 21.7 | 26.9 | 17.8 | 12.0 | 18.7 | 3.0 |
| | Less than 1 mile | Between 1 & 2 miles | Between 2 & 3 miles | Over 3 miles | Don't know | |
| And about how long do you think this is in miles | 43.6 | 33.7 | 12.7 | 9.4 | 0.7 | |

| Item | Most of the people in your area | Many of the people in your area | A few of the people in your area | Or that you do not trust people in your area |
|---|---------------------------------|---------------------------------|----------------------------------|--|
| Would you say that you trust most people in your area | 34.7 | 21.2 | 40.2 | 3.9 |

| Item | Very safe | Fairly safe | Bit unsafe | Very unsafe | Don't know |
|--|-----------|-------------|------------|-------------|------------|
| How safe do you feel walking alone in this area during the daytime | 71.9 | 24.6 | 2.3 | 0.7 | 0.6 |
| How safe do you feel walking alone in this area after dark | 31.3 | 34.8 | 19.7 | 11.8 | 2.4 |

| | Every day | 5/6 days a week | 3/4 days a week | Once/twice a week | Once/twice a month | Once every couple of months | Once/twice a year | Not at all in last 12 months |
|--|-----------|-----------------|-----------------|-------------------|--------------------|-----------------------------|-------------------|------------------------------|
| How often do you speak to relatives on the phone | 42.5 | 7.0 | 15.1 | 24.2 | 6.3 | 1.8 | 1.2 | 1.8 |
| How often do you see relatives | 31.0 | 6.8 | 13.2 | 30.9 | 9.6 | 3.4 | 3.3 | 1.9 |
| How often do you speak to friends on the phone | 28.2 | 7.3 | 16.9 | 30.5 | 10.4 | 2.2 | 1.4 | 3.1 |
| How often do you see friends | 23.6 | 6.9 | 15.7 | 34.6 | 13.5 | 2.9 | 1.6 | 1.3 |
| How often do you speak to neighbours | 35.5 | 7.7 | 13.8 | 28.6 | 8.9 | 2.2 | 1.3 | 1.9 |

| | 1/2 | 3/4 | 5 or more | None | Don't know |
|---|------|------|-----------|------|------------|
| How many relatives live within a 15-20min walk or 5-10 min drive | 31.2 | 18.4 | 26.3 | 23.8 | 0.2 |
| How many close friends live within a 15-20 min walk or 5-10 min drive | 27.7 | 23.5 | 31.0 | 17.2 | 0.7 |

| | Yes | No | Just moved into the area |
|---|------|------|--------------------------|
| In the past 6 months, have you done a favour for a neighbour | 69.8 | 28.4 | 1.8 |
| In the past 6 months, have any of your neighbours done a favour for you | 71.8 | 28.2 | - |

| | Mainly Catholic | Mainly Protestant | Mixed | Don't Know |
|--|-----------------|-------------------|-------|------------|
| Would you describe your area as mainly catholic, mainly protestant, or mixed | 20.7 | 31.1 | 41.1 | 7.0 |

| | Mainly Catholic | Mainly Protestant | Mixed |
|---|-----------------|-------------------|-------|
| Would you describe your workplace as mainly Catholic, mainly Protestant, or mixed | 13.3 | 17.4 | 69.3 |

| | Every day | Several times a week | About once a week | Several times a month but not every week | About once a month | About every other month | At most 3/4 times a year | Never | Don't Know |
|---|-----------|----------------------|-------------------|--|--------------------|-------------------------|--------------------------|-------|------------|
| How often do you travel outside your area | 43.2 | 18.8 | 15.8 | 6.6 | 5.2 | 1.2 | 3.6 | 4.7 | 0.8 |

| | Every day | Several times a week | About once a week | Several times a month but not every week | About once a month | About every other month | At most 3/4 times a year | Never | Don't Know |
|---|-----------|----------------------|-------------------|--|--------------------|-------------------------|--------------------------|-------|------------|
| How often do you travel to areas or through areas in which you feel less safe | 5.4 | 3.6 | 4.5 | 3.4 | 4.9 | 1.8 | 9.7 | 61.7 | 5.0 |

| Item | Very Confident | Fairly confident | Not very confident | Not at all confident | Depends on circumstances | Don't know |
|---|----------------|------------------|--------------------|----------------------|--------------------------|------------|
| How confident are you that you know who to turn to for help if faced with personal issue? | 29.1 | 39.5 | 14.2 | 6.7 | 4.9 | 5.6 |

| Item | Strongly agree | Agree | Neither agree nor disagree | Disagree | Strongly disagree |
|--|----------------|-------|----------------------------|----------|-------------------|
| How much would you agree that this area is a close, tight knit community | 14.2 | 38.8 | 22.0 | 22.6 | 2.5 |
| How much would you agree that this area is a friendly place to live | 20.0 | 64.2 | 10.6 | 4.2 | 0.9 |
| How much would you agree that this is a place where people look after each other | 15.4 | 48.3 | 21.3 | 13.6 | 1.4 |
| How much would you agree that most people who live in this area trust one another | 11.5 | 49.9 | 23.4 | 13.5 | 1.7 |
| How much would you agree that you often see strangers in the area. | 5.9 | 34.8 | 16.9 | 40.1 | 2.3 |
| How much do you agree you'd be happy asking people to keep an eye on house or property | 27.3 | 57.9 | 5.0 | 7.5 | 2.4 |
| How strongly do you agree that you can influence decisions that affect your area? | 4.5 | 28.8 | 29.7 | 30.3 | 6.7 |
| Do you agree that by working together people influence decisions affecting the area? | 14.3 | 51.3 | 24.2 | 8.6 | 1.7 |

The following questions could have multiple responses

| | Social clubs | Sports/hobbies clubs | Associations | Religious groups | Other type of organisation | None | Don't know | Number of persons |
|---|--------------|----------------------|--------------|------------------|----------------------------|------|------------|-------------------|
| Are you involved in any of the following types of organisations | 7.3 | 19.7 | 4.7 | 13.3 | 2.2 | 50.6 | 2.2 | 2129 |
| Are you involved in any of the following types of organisations | 9.6 | 27.2 | 23.9 | 22.6 | 14.3 | 2.3 | - | 301 |
| Are you involved in any of the following types of organisations | 8.3 | 6.7 | 30.0 | 40.0 | 15.0 | - | - | 60 |
| Are you involved in any of the following types of organisations | 16.7 | - | 8.3 | 50.0 | 25.0 | - | - | 12 |

| | Mainly Catholic | mainly Protestant | mixed areas, | poor areas, | areas of high crime | isolated areas | Number of persons |
|---|-----------------|-------------------|--------------|-------------|---------------------|----------------|-------------------|
| Which of these describes the areas in which you feel less safe? | 18.6 | 17.9 | 10.7 | 7.7 | 40.1 | 5.0 | 699 |
| Which of these describes the areas in which you feel less safe? | 10.9 | 20.0 | 1.7 | 15.2 | 37.4 | 14.8 | 230 |
| Which of these describes the areas in which you feel less safe? | 7.9 | 9.2 | 13.2 | 11.8 | 40.8 | 17.1 | 76 |
| Which of these describes the areas in which you feel less safe? | 5.6 | 33.3 | 5.6 | 27.8 | - | 27.8 | 18 |
| Which of these describes the areas in which you feel less safe? | 12.5 | - | 12.5 | 25.0 | 50.0 | - | 8 |

Appendix 3- Results

Table 3.1 Would you say you know most of the people in your area?

| | Age Group | | | | |
|---|-----------|-------|-------|-------|-------|
| | 16-29 | 30-39 | 40-49 | 50-59 | 60+ |
| most of the people in your area, | 24.2 | 26.6 | 30.6 | 32.3 | 34.1 |
| many of the people in your area, | 20.5 | 19.0 | 19.7 | 22.6 | 24.4 |
| a few of the people in your area, | 43.8 | 47.6 | 46.1 | 43.2 | 40.4 |
| or that you do not know people in your area | 11.4 | 6.7 | 3.6 | 1.9 | 1.1 |
| Total | 100.0 | 100.0 | 100.0 | 100.0 | 100.0 |

Table 3.2 How much would you agree that this area is a close, tight knit community?

| | Age Group | | | | |
|----------------------------|-----------|-------|-------|-------|------|
| | 16-29 | 30-39 | 40-49 | 50-59 | 60+ |
| Strongly Agree | 12.9 | 14.0 | 15.2 | 12.1 | 15.0 |
| Agree | 31.9 | 32.8 | 40.3 | 40.7 | 41.6 |
| Neither Agree nor Disagree | 26.2 | 25.4 | 20.0 | 20.2 | 21.3 |
| Disagree | 23.8 | 25.6 | 22.5 | 25.0 | 19.8 |
| Strongly Disagree | 5.2 | 2.3 | 2.0 | 2.0 | 2.3 |
| Total | 100 | 100 | 100 | 100 | 100 |

Table 3.3 Would you say that you trust most people in your area?

| | Age Group | | | | |
|--|-----------|-------|-------|-------|-------|
| | 16-29 | 30-39 | 40-49 | 50-59 | 60+ |
| most of the people in your area, | 15.9 | 26.0 | 33.6 | 40.0 | 42.0 |
| many of the people in your area, | 19.7 | 20.9 | 21.8 | 18.3 | 22.7 |
| a few of the people in your area, | 51.0 | 46.9 | 41.4 | 39.7 | 34.0 |
| or that you do not trust people in your area | 13.5 | 6.2 | 3.2 | 2.0 | 1.4 |
| Total | 100.0 | 100.0 | 100.0 | 100.0 | 100.0 |

Table 3.4 In the past 6 mths, have any of your neighbours done a favour for you?

| | Age Group | | | | |
|-------|-----------|-------|-------|-------|------|
| | 16-29 | 30-39 | 40-49 | 50-59 | 60+ |
| Yes | 51.5 | 68.4 | 74.5 | 77.9 | 74.5 |
| No | 48.5 | 31.6 | 25.5 | 22.1 | 25.5 |
| Total | 100.0 | 100.0 | 100.0 | 100.0 | 100 |

Table 3.5 How safe do you feel walking alone in this area after dark?

| | Age Group 2 | | | | |
|-------------|-------------|-------|-------|-------|------|
| | 16-29 | 30-39 | 40-49 | 50-59 | 60+ |
| Very safe | 31.5 | 34.9 | 38.4 | 40.4 | 21.8 |
| Fairly safe | 37.9 | 35.2 | 34.8 | 33.1 | 34.6 |
| Bit unsafe | 21.5 | 22.0 | 18.2 | 16.4 | 20.5 |
| Very unsafe | 8.2 | 6.8 | 7.8 | 9.5 | 18.2 |
| Dont Know | 0.9 | 1.1 | 0.7 | 0.6 | 5.0 |
| | 100 | 100 | 100 | 100 | 100 |

Table 3.6 How often do you travel to areas or through areas in which you feel less safe?

| | Age Group | | | | |
|-------------------------------------|-----------|-------|-------|-------|------|
| | 16-29 | 30-39 | 40-49 | 50-59 | 60+ |
| every day, | 11.0 | 8.4 | 7.8 | 5.6 | 1.3 |
| several times a week, | 6.8 | 3.9 | 6.1 | 3.6 | 1.3 |
| about once a week, | 6.8 | 5.9 | 6.6 | 3.6 | 2.6 |
| several times a month, but not ever | 6.8 | 4.2 | 3.4 | 3.3 | 2.0 |
| about once a month | 6.4 | 5.6 | 5.1 | 5.3 | 3.8 |
| about every other month | 3.2 | 3.1 | 1.9 | 1.7 | 0.8 |
| at most three or four times a year | 9.1 | 15.1 | 10.0 | 12.5 | 5.9 |
| or never? | 46.1 | 48.5 | 55.6 | 61.3 | 75.6 |
| Dont Know | 3.7 | 5.3 | 3.6 | 3.1 | 6.8 |
| Total | 100 | 100 | 100 | 100 | 100 |

Table 3.7 Bonding by age groups

| | Age Group | | | | |
|-------------|-----------|-------|-------|-------|------|
| | 16-29 | 30-39 | 40-49 | 50-59 | 60+ |
| very strong | 31.1 | 43.1 | 51.7 | 54.3 | 50.7 |
| strong | 40.2 | 37.8 | 37.6 | 35.7 | 38.8 |
| neither | 9.1 | 3.9 | 2.7 | 2.2 | 2.9 |
| weak | 17.4 | 13.4 | 7.5 | 7.8 | 6.9 |
| very weak | 2.3 | 1.7 | 0.5 | 0.0 | 0.6 |
| Total | 100 | 100 | 100 | 100 | 100 |

Table 3.8 Bridging by age groups

| | Age Group | | | | |
|-------------|-----------|-------|-------|-------|------|
| | 16-29 | 30-39 | 40-49 | 50-59 | 60+ |
| very strong | 23.3 | 18.2 | 20.4 | 19.2 | 11.9 |
| strong | 32.4 | 40.1 | 36.9 | 34.3 | 37.9 |
| neither | 4.1 | 6.2 | 1.9 | 5.6 | 5.6 |
| weak | 37.0 | 32.8 | 35.4 | 37.6 | 35.9 |
| very weak | 3.2 | 2.8 | 5.3 | 3.3 | 8.7 |
| Total | 100 | 100 | 100 | 100 | 100 |

Table 3.9 Linking by age groups

| | Age Group | | | | |
|-------------|-----------|-------|-------|-------|------|
| | 16-29 | 30-39 | 40-49 | 50-59 | 60+ |
| very strong | 7.8 | 11.5 | 13.1 | 10.9 | 7.8 |
| strong | 36.1 | 37.6 | 38.4 | 40.4 | 36.1 |
| neither | 18.3 | 19.4 | 21.7 | 22.3 | 19.7 |
| weak | 29.2 | 25.6 | 21.9 | 20.1 | 28.9 |
| very weak | 8.7 | 5.9 | 4.9 | 6.4 | 7.5 |
| Total | 100 | 100 | 100 | 100 | 100 |

Table 3.10 Social Capital by age groups

| | Age Group 2 | | | | |
|-------------|-------------|-------|-------|-------|------|
| | 16-29 | 30-39 | 40-49 | 50-59 | 60+ |
| very strong | 21.9 | 31.1 | 39.6 | 35.9 | 28.7 |
| strong | 51.1 | 52.1 | 47.8 | 52.9 | 56.7 |
| neither | 2.3 | 1.1 | 1.7 | 1.7 | 2.6 |
| weak | 24.2 | 14.6 | 10.0 | 8.9 | 11.1 |
| very weak | 0.5 | 1.1 | 1.0 | 0.6 | 0.9 |
| Total | 100 | 100 | 100 | 100 | 100 |

Table 3.11 How often do you travel to areas or through areas in which you feel less safe?

| | Sex | |
|--|------|--------|
| | Male | Female |
| every day, | 6.7 | 3.6 |
| several times a week, | 4.3 | 2.6 |
| about once a week, | 4.7 | 4.2 |
| several times a month, but not every wee | 3.8 | 2.8 |
| about once a month | 4.9 | 4.8 |
| about every other month | 1.8 | 1.8 |
| at most three or four times a year | 10.0 | 9.2 |
| or never? | 59.5 | 65.2 |
| Dont Know | 4.4 | 5.9 |
| Total | 100 | 100 |

Table 3.12 How safe do you feel walking alone in this area after dark?

| | Sex | |
|-------------|------|--------|
| | Male | Female |
| Very safe | 40.6 | 16.9 |
| Fairly safe | 38.0 | 29.9 |
| Bit unsafe | 14.4 | 28.0 |
| Very unsafe | 5.3 | 21.8 |
| Don't Know | 1.7 | 3.4 |
| | 100 | 100 |

Table 3.13 Do you belong to a club?

| | Sex | |
|-------|-------|--------|
| | Male | Female |
| Yes | 53.8 | 39.0 |
| No | 46.2 | 61.0 |
| Total | 100.0 | 100.0 |

Table 3.14 How confident are you that you know who to turn to for help if faced with personal issue?

| | Sex | |
|--------------------------|------|--------|
| | Male | Female |
| Very confident, | 33.2 | 22.8 |
| fairly confident, | 41.1 | 37.1 |
| not very confident, | 12.9 | 16.1 |
| or not at all confident? | 4.2 | 10.6 |
| Depends on circumstances | 3.9 | 6.5 |
| Dont Know | 4.7 | 7.1 |
| Total | 100 | 100 |

Table 3.15 Bonding by sex

| | Sex | |
|-------------|-------|--------|
| | Male | Female |
| very strong | 54.3 | 38.9 |
| strong | 35.0 | 42.7 |
| neither | 2.6 | 5.0 |
| weak | 7.6 | 12.1 |
| very weak | 0.5 | 1.3 |
| Total | 100.0 | 100.0 |

Table 3.16 Bridging by sex

| | Sex | |
|-------------|-------|--------|
| | Male | Female |
| very strong | 20.4 | 11.7 |
| strong | 39.6 | 32.8 |
| neither | 4.0 | 6.1 |
| weak | 32.2 | 41.0 |
| very weak | 3.8 | 8.4 |
| Total | 100.0 | 100.0 |

Table 3.17 Linking by sex

| | Sex | |
|-------------|-------|--------|
| | Male | Female |
| very strong | 10.4 | 9.2 |
| strong | 39.3 | 34.9 |
| neither | 22.2 | 17.4 |
| weak | 23.1 | 29.2 |
| very weak | 4.9 | 9.3 |
| Total | 100.0 | 100.0 |

Table 3.18 Social Capital by sex

| | Sex | |
|-------------|-------|--------|
| | Male | Female |
| very strong | 37.7 | 22.5 |
| strong | 51.2 | 55.9 |
| neither | 1.7 | 2.4 |
| weak | 8.9 | 17.9 |
| very weak | 0.5 | 1.3 |
| Total | 100.0 | 100.0 |

Table 3.19 How much do you agree you'd be happy asking people to keep an eye on house or property

| | Marital Status | |
|----------------------------|----------------|--------|
| | Couple | Single |
| Strongly Agree | 29.9 | 24.7 |
| Agree | 60.6 | 55.2 |
| Neither Agree nor Disagree | 3.8 | 6.2 |
| Disagree | 3.8 | 11.0 |
| Strongly Disagree | 1.8 | 2.9 |
| Total | 100 | 100 |

Table 3.20 Would you say that you trust most people in your area?

| | Marital Status | |
|---|----------------|--------|
| | Couple | Single |
| most of the people in your area, | 39.4 | 30.2 |
| many of the people in your area, | 23.2 | 19.2 |
| a few of the people in your area, | 35.2 | 45.1 |
| or that you do not trust people in your | 2.1 | 5.5 |
| Total | 100 | 100 |

Table 3.21 In the past 6 months, have you done a favour for a neighbour?

| | Marital Status | |
|-------|----------------|--------|
| | Couple | Single |
| Yes | 76.8 | 67.0 |
| No | 23.2 | 33.0 |
| Total | 100.0 | 100.0 |

Table 3.22 How safe do you feel walking alone in this area after dark?

| | Marital Status | |
|-------------|----------------|--------|
| | Couple | Single |
| Very safe | 40.9 | 22.2 |
| Fairly safe | 37.9 | 31.9 |
| Bit unsafe | 14.4 | 24.8 |
| Very unsafe | 5.7 | 17.6 |
| Dont Know | 1.2 | 3.5 |
| Total | 100 | 100 |

Table 3.23 How often do you travel outside your area?

| | Marital Status | |
|--|----------------|--------|
| | Couple | Single |
| every day, | 54.7 | 32.4 |
| several times a week, | 18.6 | 19.1 |
| about once a week, | 13.4 | 18.1 |
| several times a month, but not every wee | 4.3 | 8.8 |
| about once a month | 3.4 | 7.0 |
| about every other month | 0.8 | 1.6 |
| at most three or four times a year | 2.6 | 4.5 |
| or never? | 1.8 | 7.5 |
| Dont Know | 0.5 | 1.1 |
| | 100 | 100 |

Table 3.24 Do you belong to a club?

| | Marital Status | |
|-------|----------------|--------|
| | Couple | Single |
| Yes | 56.6 | 39.8 |
| No | 43.4 | 60.2 |
| Total | 100 | 100 |

Table 3.25 Have you taken action in an attempt to solve a local problem that was affecting people in your area?

| | Marital Status | |
|-----|----------------|--------|
| | Couple | Single |
| Yes | 21.8 | 15.4 |
| No | 78.2 | 84.6 |
| | 100 | 100 |

Table 3.26 Bonding by marital status

| | Marital Status | |
|-------------|----------------|--------|
| | Couple | Single |
| very strong | 56.2 | 40.6 |
| strong | 35.9 | 40.1 |
| neither | 2.1 | 4.9 |
| weak | 5.3 | 13.2 |
| very weak | 0.5 | 1.2 |
| | 100 | 100 |

Table 3.27 Bridging by marital status

| | Marital Status | |
|-------------|----------------|--------|
| | Couple | Single |
| very strong | 21.2 | 13.0 |
| strong | 42.6 | 31.4 |
| neither | 3.9 | 5.7 |
| weak | 29.6 | 41.4 |
| very weak | 2.6 | 8.4 |
| Total | 100 | 100 |

Table 3.28 Linking by marital status

| | Marital Status | |
|-------------|----------------|--------|
| | Couple | Single |
| very strong | 11.8 | 8.2 |
| strong | 41.0 | 34.2 |
| neither | 23.1 | 17.6 |
| weak | 20.5 | 30.3 |
| very weak | 3.5 | 9.7 |
| Total | 100 | 100 |

Table 3.29 Social capital by marital status

| | Marital Status | |
|-------------|----------------|--------|
| | Couple | Single |
| very strong | 40.5 | 23.4 |
| strong | 52.1 | 53.9 |
| neither | 0.8 | 3.1 |
| weak | 6.4 | 18.2 |
| very weak | 0.3 | 1.4 |
| Total | 100 | 100 |

Table 3.30 Would you say that you know most of the...?

| | Religion Stated | |
|---|-----------------|------------|
| | Catholic | Protestant |
| most of the people in your area, | 37.1 | 27.9 |
| many of the people in your area, | 22.3 | 22.2 |
| a few of the people in your area, | 37.3 | 46.3 |
| or that you do not know people in your area | 3.3 | 3.7 |
| | 100 | 100 |

Table 3.31 How much would you agree that this area is a close, tight knit community?

| | Religion Stated | |
|----------------------------|-----------------|------------|
| | Catholic | Protestant |
| Strongly Agree | 17.8 | 12.1 |
| Agree | 41.6 | 37.7 |
| Neither Agree nor Disagree | 18.0 | 24.5 |
| Disagree | 20.3 | 23.8 |
| Strongly Disagree | 2.4 | 1.8 |
| Total | 100.0 | 100.0 |

Table 3.32 Do you agree that by working together people influence decisions affecting the area?

| | Religion Stated | |
|----------------------------|-----------------|------------|
| | Catholic | Protestant |
| Strongly Agree | 18.7 | 11.6 |
| Agree | 51.8 | 51.6 |
| Neither Agree nor Disagree | 19.3 | 27.0 |
| Disagree | 8.6 | 8.4 |
| Strongly Disagree | 1.6 | 1.3 |
| Total | 100.0 | 100.0 |

Table 3.33 Do you belong to a club/organisation?

| | Religion Stated | |
|-------|-----------------|------------|
| | Catholic | Protestant |
| Yes | 35.4 | 56.4 |
| No | 64.6 | 43.6 |
| Total | 100.0 | 100.0 |

Table 3.34 Bridging by Social Capital

| | Religion Stated | |
|-------------|-----------------|------------|
| | Catholic | Protestant |
| very strong | 14.5 | 18.7 |
| strong | 29.4 | 41.9 |
| neither | 4.8 | 4.6 |
| weak | 43.4 | 30.7 |
| very weak | 7.9 | 4.1 |
| Total | 100.0 | 100.0 |

Table 3.35 Would you say that you know most of the...?

| | Qualification Level | | |
|---|---------------------|-------|--------|
| | No quals | Other | Higher |
| most of the people in your area, | 43.1 | 29.7 | 18.6 |
| many of the people in your area, | 17.4 | 22.5 | 21.8 |
| a few of the people in your area, | 35.1 | 44.1 | 54.1 |
| or that you do not know people in your area | 4.4 | 3.6 | 5.5 |
| Total | 100 | 100 | 100 |

Table 3.36 How much would you agree that this area is a close, tight knit community?

| | Qualification Level | | |
|----------------------------|---------------------|-------|--------|
| | No quals | Other | Higher |
| Strongly Agree | 18.3 | 15.1 | 8.6 |
| Agree | 43.5 | 36.4 | 31.6 |
| Neither Agree nor Disagree | 16.6 | 23.0 | 26.5 |
| Disagree | 19.5 | 23.2 | 31.0 |
| Strongly Disagree | 2.1 | 2.4 | 2.4 |
| Total | 100 | 100 | 100 |

Table 3.37 Do you belong to a club or organisation

| | Qualification Level | | |
|-------|---------------------|-------|--------|
| | No quals | Other | Higher |
| Yes | 35.2 | 47.9 | 61.4 |
| No | 64.8 | 52.1 | 38.6 |
| Total | 100.0 | 100.0 | 100.0 |

Table 3.38 How confident are you that you know who to turn to for help if faced with personal issue?

| | Qualification Level | | |
|--------------------------|---------------------|-------|--------|
| | No quals | Other | Higher |
| Very confident, | 26.0 | 27.5 | 42.5 |
| fairly confident, | 37.4 | 45.4 | 38.9 |
| not very confident, | 16.8 | 12.8 | 9.7 |
| or not at all confident? | 7.5 | 6.3 | 4.0 |
| Depends on circumstances | 5.6 | 4.1 | 2.7 |
| Dont Know | 6.7 | 3.9 | 2.1 |
| Total | 100 | 100 | 100 |

Table 3.39 Bridging social capital by Qualification level

| | Qualification Level | | |
|-------------|---------------------|-------|--------|
| | No quals | Other | Higher |
| very strong | 11.5 | 19.0 | 26.4 |
| strong | 28.4 | 39.2 | 44.6 |
| neither | 6.1 | 3.6 | 3.0 |
| weak | 45.4 | 35.6 | 24.9 |
| very weak | 8.6 | 2.5 | 1.1 |
| Total | 100 | 100 | 100 |

Table 3.40 Linking social capital by Qualification level

| | Qualification Level | | |
|-------------|---------------------|-------|--------|
| | No quals | Other | Higher |
| very strong | 7.7 | 10.1 | 15.6 |
| strong | 36.1 | 38.8 | 42.5 |
| neither | 22.1 | 20.6 | 20.3 |
| weak | 26.1 | 24.7 | 17.3 |
| very weak | 8.1 | 5.8 | 4.2 |
| Total | 100 | 100 | 100 |

Table 3.41 Social Capital by Qualification level

| | Qualification Level | | |
|-------------|---------------------|-------|--------|
| | No quals | Other | Higher |
| very strong | 29.1 | 32.9 | 42.5 |
| strong | 51.9 | 52.5 | 48.0 |
| neither | 2.9 | 1.3 | 1.1 |
| weak | 14.6 | 13.0 | 8.2 |
| very weak | 1.5 | 0.3 | 0.2 |
| Total | 100 | 100 | 100 |

Table 3.42 Would you say that you know....?

| | Economic Activity - ILO def | | |
|---|-----------------------------|------------|-----------------------|
| | Working | Unemployed | Economically Inactive |
| most of the people in your area, | 28.3 | 26.8 | 33.6 |
| many of the people in your area, | 20.3 | 17.1 | 23.7 |
| a few of the people in your area, | 46.8 | 53.7 | 39.7 |
| or that you do not know people in your area | 4.5 | 2.4 | 3.0 |
| Total | 100 | 100 | 100 |

Table 3.43 How much would you agree that this area is a close, tight knit community?

| | Economic Activity - ILO def | | |
|----------------------------|-----------------------------|------------|-----------------------|
| | Working | Unemployed | Economically Inactive |
| Strongly Agree | 13.2 | 12.5 | 15.2 |
| Agree | 35.8 | 47.5 | 41.4 |
| Neither Agree nor Disagree | 24.0 | 20.0 | 20.1 |
| Disagree | 25.1 | 17.5 | 20.1 |
| Strongly Disagree | 1.8 | 2.5 | 3.1 |
| Total | 100 | 100 | 100 |

Table 3.44 How safe do you feel walking alone in this area after dark?

| | Economic Activity - ILO def | | |
|-------------|-----------------------------|------------|-----------------------|
| | Working | Unemployed | Economically Inactive |
| Very safe | 40.0 | 36.6 | 22.3 |
| Fairly safe | 37.8 | 29.3 | 32.0 |
| Bit unsafe | 16.2 | 17.1 | 23.4 |
| Very unsafe | 5.1 | 17.1 | 18.4 |
| Dont Know | 0.9 | 0.0 | 3.9 |
| Total | 100 | 100 | 100 |

Table 3.45 How often do you travel outside your area?

| | Economic Activity - ILO def | | |
|--|-----------------------------|------------|-----------------------|
| | Working | Unemployed | Economically Inactive |
| every day, | 71.3 | 39.0 | 14.6 |
| several times a week, | 12.2 | 31.7 | 25.1 |
| about once a week, | 7.8 | 9.8 | 24.2 |
| several times a month, but not every wee | 3.7 | 4.9 | 9.7 |
| about once a month | 2.3 | 2.4 | 8.3 |
| about every other month | 0.8 | 2.4 | 1.7 |
| at most three or four times a year | 1.0 | 4.9 | 6.1 |
| or never? | 0.8 | 4.9 | 8.8 |
| Dont Know | 0.2 | 0.0 | 1.5 |
| Total | 100 | 100 | 100 |

Table 3.46 How confident are you that you know who to turn to for help if faced with personal issue?

| | Economic Activity - ILO def | | |
|--------------------------|-----------------------------|------------|-----------------------|
| | Working | Unemployed | Economically Inactive |
| Very confident, | 35.2 | 26.8 | 22.9 |
| fairly confident, | 42.0 | 22.0 | 37.7 |
| not very confident, | 11.5 | 26.8 | 16.4 |
| or not at all confident? | 4.5 | 12.2 | 8.7 |
| Depends on circumstances | 3.7 | 2.4 | 6.2 |
| Dont Know | 3.0 | 9.8 | 8.2 |
| Total | 100 | 100 | 100 |

Table 3.47 Do you belong to a club or organisation

| | Economic Activity - ILO def | | |
|-------|-----------------------------|------------|-----------------------|
| | Working | Unemployed | Economically Inactive |
| Yes | 53.6 | 36.6 | 42.7 |
| No | 46.4 | 63.4 | 57.3 |
| Total | 100 | 100 | 100 |

Table 3.48 Bonding by economic activity

| | Economic Activity - ILO def | | |
|-------------|-----------------------------|------------|-----------------------|
| | Working | Unemployed | Economically Inactive |
| very strong | 50.6 | 34.1 | 46.3 |
| strong | 38.0 | 36.6 | 38.2 |
| neither | 3.4 | 2.4 | 3.8 |
| weak | 7.5 | 24.4 | 10.7 |
| very weak | 0.6 | 2.4 | 1.1 |
| Total | 100 | 100 | 100 |

Table 3.49 Bridging by economic activity

| | Economic Activity - ILO def | | |
|-------------|-----------------------------|------------|-----------------------|
| | Working | Unemployed | Economically Inactive |
| very strong | 23.9 | 19.5 | 9.8 |
| strong | 40.4 | 29.3 | 33.6 |
| neither | 3.9 | 0.0 | 6.0 |
| weak | 30.5 | 39.0 | 40.9 |
| very weak | 1.3 | 12.2 | 9.7 |
| Total | 100 | 100 | 100 |

Table 3.50 Linking by economic activity

| | Economic Activity - ILO def | | |
|-------------|-----------------------------|------------|-----------------------|
| | Working | Unemployed | Economically Inactive |
| very strong | 12.0 | 14.6 | 7.7 |
| strong | 41.7 | 17.1 | 34.1 |
| neither | 21.5 | 12.2 | 19.4 |
| weak | 19.9 | 36.6 | 30.8 |
| very weak | 4.9 | 19.5 | 8.0 |
| Total | 100 | 100 | 100 |

Table 3.51 Social Capital by economic activity

| | Economic Activity - ILO def | | |
|-------------|-----------------------------|------------|-----------------------|
| | Working | Unemployed | Economically Inactive |
| very strong | 38.3 | 22.0 | 25.3 |
| strong | 50.9 | 41.5 | 55.6 |
| neither | 1.6 | 2.4 | 2.3 |
| weak | 9.1 | 26.8 | 15.3 |
| very weak | 0.1 | 7.3 | 1.4 |
| Total | 100 | 100 | 100 |

Table 3.52 Would you say that you know most of the....?

| | Socio-economic group | | | | | |
|---|----------------------|------------------------|------------------------------------|----------------|---|------------------|
| | Professional | Employers and Managers | Intermediate and Junior non-manual | Skilled Manual | Semi-skilled manual and personal services | Unskilled Manual |
| most of the people in your area, | 20.5 | 29.1 | 21.0 | 39.7 | 34.3 | 40.0 |
| many of the people in your area, | 20.5 | 19.1 | 24.1 | 20.4 | 22.8 | 21.5 |
| a few of the people in your area, | 55.7 | 49.0 | 51.0 | 37.2 | 38.2 | 37.7 |
| or that you do not know people in your area | 3.3 | 2.8 | 3.9 | 2.7 | 4.7 | 0.8 |
| Total | 100 | 100 | 100 | 100 | 100 | 100 |

Table 3.53 How much would you agree that this area is a close, tight knit community?

| | Socio-economic group | | | | | |
|----------------------------|----------------------|------------------------|------------------------------------|----------------|---|------------------|
| | Professional | Employers and Managers | Intermediate and Junior non-manual | Skilled Manual | Semi-skilled manual and personal services | Unskilled Manual |
| Strongly Agree | 7.4 | 12.4 | 11.6 | 16.5 | 16.6 | 20.2 |
| Agree | 29.5 | 41.0 | 32.7 | 42.8 | 40.5 | 48.1 |
| Neither Agree nor Disagree | 26.2 | 21.3 | 24.3 | 19.9 | 23.0 | 17.1 |
| Disagree | 33.6 | 24.9 | 28.2 | 18.9 | 17.2 | 10.9 |
| Strongly Disagree | 3.3 | 0.4 | 3.2 | 1.8 | 2.7 | 3.9 |
| Total | 100 | 100 | 100 | 100 | 100 | 100 |

Table 3.54 Would you say that you trust most people in your area?

| | Socio-economic group | | | | | |
|---|----------------------|------------------------|------------------------------------|----------------|---|------------------|
| | Professional | Employers and Managers | Intermediate and Junior non-manual | Skilled Manual | Semi-skilled manual and personal services | Unskilled Manual |
| most of the people in your area, | 33.3 | 36.0 | 29.5 | 42.4 | 31.2 | 39.8 |
| many of the people in your area, | 22.5 | 29.1 | 19.6 | 19.8 | 21.2 | 16.4 |
| a few of the people in your area, | 37.5 | 32.8 | 45.9 | 35.4 | 43.6 | 40.6 |
| or that you do not trust people in your | 6.7 | 2.0 | 5.0 | 2.4 | 3.9 | 3.1 |
| Total | 100 | 100 | 100 | 100 | 100 | 100 |

Table 3.55 In the past 6 months, have you done a favour for a neighbour?

| | Socio-economic group | | | | | |
|--------------------------|----------------------|------------------------|------------------------------------|----------------|---|------------------|
| | Professional | Employers and Managers | Intermediate and Junior non-manual | Skilled Manual | Semi-skilled manual and personal services | Unskilled Manual |
| Yes | 77.0 | 80.8 | 70.8 | 72.0 | 62.1 | 66.7 |
| No | 20.5 | 18.4 | 26.8 | 27.1 | 35.2 | 31.8 |
| Just moved into the area | 2.5 | 0.8 | 2.5 | 0.9 | 2.7 | 1.6 |
| Total | 100 | 100 | 100 | 100 | 100 | 100 |

Table 3.56 In the past 6 mths, have any of your neighbours done a favour for you?

| | Socio-economic group | | | | | |
|-------|----------------------|------------------------|------------------------------------|----------------|---|------------------|
| | Professional | Employers and Managers | Intermediate and Junior non-manual | Skilled Manual | Semi-skilled manual and personal services | Unskilled Manual |
| Yes | 73.9 | 80.2 | 74.9 | 72.7 | 65.7 | 63.0 |
| No | 26.1 | 19.8 | 25.1 | 27.3 | 34.3 | 37.0 |
| Total | 100 | 100 | 100 | 100 | 100 | 100 |

Table 3.57 How often do you travel outside your area?

| | Socio-economic group | | | | | |
|--|----------------------|------------------------|------------------------------------|----------------|---|------------------|
| | Professional | Employers and Managers | Intermediate and Junior non-manual | Skilled Manual | Semi-skilled manual and personal services | Unskilled Manual |
| every day, | 53.3 | 58.6 | 47.2 | 45.2 | 32.5 | 24.6 |
| several times a week, | 27.9 | 18.7 | 19.5 | 19.7 | 15.1 | 16.9 |
| about once a week, | 10.7 | 8.0 | 13.8 | 17.3 | 21.9 | 17.7 |
| several times a month, but not every wee | 4.1 | 6.8 | 7.0 | 5.6 | 5.9 | 9.2 |
| about once a month | 1.6 | 2.8 | 5.4 | 3.6 | 6.8 | 10.8 |
| about every other month | 0.8 | 0.8 | 1.3 | 0.9 | 1.8 | 2.3 |
| at most three or four times a year | 0.8 | 3.2 | 2.8 | 3.5 | 5.3 | 3.8 |
| or never? | 0.0 | 0.8 | 2.3 | 3.3 | 9.8 | 13.1 |
| Dont Know | 0.8 | 0.4 | 0.7 | 0.9 | 0.9 | 1.5 |
| Total | 100 | 100 | 100 | 100 | 100 | 100 |

Table 3.58 Do you belong to a club or organisation?

| | Socio-economic group | | | | | |
|-------|----------------------|------------------------|------------------------------------|----------------|---|------------------|
| | Professional | Employers and Managers | Intermediate and Junior non-manual | Skilled Manual | Semi-skilled manual and personal services | Unskilled Manual |
| Yes | 65.3 | 65.3 | 53.9 | 45.9 | 33.1 | 31.2 |
| No | 34.7 | 34.7 | 46.1 | 54.1 | 66.9 | 68.8 |
| Total | 100 | 100 | 100 | 100 | 100 | 100 |

Table 3.59 Bonding by Socio-economic group

| | Socio-economic group | | | | | |
|-------------|----------------------|------------------------|------------------------------------|----------------|---|------------------|
| | Professional | Employers and Managers | Intermediate and Junior non-manual | Skilled Manual | Semi-skilled manual and personal services | Unskilled Manual |
| very strong | 50.0 | 56.2 | 42.8 | 54.6 | 43.8 | 50.0 |
| strong | 38.5 | 37.1 | 41.6 | 34.2 | 38.8 | 36.9 |
| neither | 1.6 | 3.2 | 4.3 | 2.9 | 5.3 | 1.5 |
| weak | 9.0 | 3.2 | 10.5 | 7.7 | 11.2 | 10.0 |
| very weak | 0.8 | 0.4 | 0.8 | 0.5 | 0.9 | 1.5 |
| Total | 100 | 100 | 100 | 100 | 100 | 100 |

Table 3.60 Bridging by Socio-economic group

| | Socio-economic group | | | | | |
|-------------|----------------------|------------------------|------------------------------------|----------------|---|------------------|
| | Professional | Employers and Managers | Intermediate and Junior non-manual | Skilled Manual | Semi-skilled manual and personal services | Unskilled Manual |
| very strong | 32.0 | 19.5 | 21.5 | 16.2 | 8.9 | 6.9 |
| strong | 41.8 | 49.4 | 39.0 | 35.3 | 31.1 | 27.7 |
| neither | 1.6 | 2.4 | 4.3 | 4.4 | 6.8 | 5.4 |
| weak | 23.8 | 27.5 | 31.0 | 39.7 | 44.4 | 46.9 |
| very weak | 0.8 | 1.2 | 4.3 | 4.4 | 8.9 | 13.1 |
| Total | 100 | 100 | 100 | 100 | 100 | 100 |

Table 3.61 Linking by Socio-economic group

| | Socio-economic group | | | | | |
|-------------|----------------------|------------------------|------------------------------------|----------------|---|------------------|
| | Professional | Employers and Managers | Intermediate and Junior non-manual | Skilled Manual | Semi-skilled manual and personal services | Unskilled Manual |
| very strong | 11.5 | 12.7 | 12.3 | 7.8 | 7.1 | 9.2 |
| strong | 43.4 | 41.0 | 38.3 | 39.3 | 36.7 | 24.6 |
| neither | 16.4 | 22.3 | 20.2 | 21.9 | 19.5 | 20.8 |
| weak | 20.5 | 19.1 | 23.3 | 25.3 | 29.9 | 36.9 |
| very weak | 8.2 | 4.8 | 5.9 | 5.6 | 6.8 | 8.5 |
| Total | 100 | 100 | 100 | 100 | 100 | 100 |

Table 3.62 Social Capital by Socio-economic group

| | Socio-economic group | | | | | |
|-------------|----------------------|------------------------|------------------------------------|----------------|---|------------------|
| | Professional | Employers and Managers | Intermediate and Junior non-manual | Skilled Manual | Semi-skilled manual and personal services | Unskilled Manual |
| very strong | 40.2 | 40.2 | 32.1 | 35.9 | 22.8 | 21.5 |
| strong | 50.8 | 52.2 | 53.3 | 52.3 | 55.0 | 58.5 |
| neither | 0.8 | 0.4 | 1.3 | 2.2 | 3.0 | 3.8 |
| weak | 6.6 | 7.2 | 12.6 | 9.3 | 18.3 | 14.6 |
| very weak | 1.6 | 0.0 | 0.7 | 0.4 | 0.9 | 1.5 |
| Total | 100 | 100 | 100 | 100 | 100 | 100 |

Table 3.63 Would you say that you know...?

| | Area of NI | | |
|---|------------|---------|---------|
| | Belfast | East NI | West NI |
| most of the people in your area, | 23.9 | 24.6 | 43.0 |
| many of the people in your area, | 21.8 | 20.3 | 24.2 |
| a few of the people in your area, | 47.5 | 51.9 | 29.9 |
| or that you do not know people in your area | 6.8 | 3.2 | 3.0 |
| Total | 100 | 100 | 100 |

Table 3.64 How much would you agree that this area is a close, tight knit community?

| | Area of NI | | |
|----------------------------|------------|---------|---------|
| | Belfast | East NI | West NI |
| Strongly Agree | 13.9 | 10.7 | 19.0 |
| Agree | 33.4 | 34.8 | 47.0 |
| Neither Agree nor Disagree | 20.3 | 26.4 | 17.0 |
| Disagree | 27.9 | 25.8 | 15.5 |
| Strongly Disagree | 4.5 | 2.4 | 1.5 |
| Total | 100 | 100 | 100 |

Table 3.65 How much would you agree that this is a place where people look after each other?

| | Area of NI | | |
|----------------------------|------------|---------|---------|
| | Belfast | East NI | West NI |
| Strongly Agree | 11.3 | 12.9 | 20.8 |
| Agree | 41.4 | 46.8 | 54.1 |
| Neither Agree nor Disagree | 27.2 | 23.6 | 15.0 |
| Disagree | 18.6 | 15.3 | 8.7 |
| Strongly Disagree | 1.6 | 1.3 | 1.4 |
| Total | 100 | 100 | 100 |

Table 3.66 How much would you agree that most people who live in this area trust one another?

| | Area of NI | | |
|----------------------------|------------|---------|---------|
| | Belfast | East NI | West NI |
| Strongly Agree | 7.8 | 9.7 | 15.9 |
| Agree | 38.2 | 51.0 | 54.6 |
| Neither Agree nor Disagree | 29.4 | 25.1 | 17.8 |
| Disagree | 22.2 | 12.8 | 9.9 |
| Strongly Disagree | 2.4 | 1.3 | 1.8 |
| Total | 100 | 100 | 100 |

Table 3.67 How safe do you feel walking alone in this area after dark?

| | Area of NI | | |
|-------------|------------|---------|---------|
| | Belfast | East NI | West NI |
| Very safe | 22.6 | 30.4 | 37.2 |
| Fairly safe | 34.8 | 35.9 | 33.4 |
| Bit unsafe | 23.1 | 21.4 | 15.7 |
| Very unsafe | 14.8 | 10.8 | 11.5 |
| Dont Know | 4.7 | 1.5 | 2.2 |
| Total | 100 | 100 | 100 |

Table 3.68 How often do you travel outside your area?

| | Area of NI | | |
|--|------------|---------|---------|
| | Belfast | East NI | West NI |
| every day, | 41.0 | 48.1 | 37.9 |
| several times a week, | 17.4 | 18.7 | 19.7 |
| about once a week, | 15.3 | 14.8 | 17.4 |
| several times a month, but not every wee | 7.8 | 5.6 | 7.5 |
| about once a month | 5.7 | 4.0 | 6.6 |
| about every other month | 1.6 | 1.3 | 0.9 |
| at most three or four times a year | 3.1 | 3.1 | 4.5 |
| or never? | 7.5 | 4.0 | 4.3 |
| Dont Know | 0.5 | 0.6 | 1.2 |
| Total | 100 | 100 | 100 |

Table 3.69 How often do you travel to areas or through areas in which you feel less safe?

| | Area of NI | | |
|--|------------|---------|---------|
| | Belfast | East NI | West NI |
| every day, | 8.3 | 7.1 | 1.8 |
| several times a week, | 7.3 | 3.8 | 1.5 |
| about once a week, | 7.8 | 4.3 | 3.1 |
| several times a month, but not every wee | 7.3 | 2.5 | 2.6 |
| about once a month | 6.5 | 5.8 | 2.9 |
| about every other month | 2.1 | 1.7 | 1.8 |
| at most three or four times a year | 6.8 | 9.2 | 11.8 |
| or never? | 49.6 | 59.1 | 71.6 |
| Dont Know | 4.4 | 6.7 | 3.0 |
| Total | 100 | 100 | 100 |

Table 3.70 Do you belong to a club or organisation?

| | Area of NI | | |
|-------|------------|---------|---------|
| | Belfast | East NI | West NI |
| Yes | 39.9 | 56.8 | 40.1 |
| No | 60.1 | 43.2 | 59.9 |
| Total | 100 | 100 | 100 |

Table 3.71 Bonding social capital by area

| | Area of NI | | |
|-------------|------------|---------|---------|
| | Belfast | East NI | West NI |
| very strong | 35.8 | 46.2 | 57.5 |
| strong | 42.3 | 40.7 | 32.0 |
| neither | 4.4 | 3.8 | 2.8 |
| weak | 16.1 | 8.8 | 6.5 |
| very weak | 1.3 | 0.5 | 1.1 |
| Total | 100 | 100 | 100 |

Table 3.72 Bridging social capital by area

| | Area of NI | | |
|-------------|------------|---------|---------|
| | Belfast | East NI | West NI |
| very strong | 19.5 | 21.6 | 9.4 |
| strong | 34.3 | 40.7 | 33.0 |
| neither | 7.5 | 4.2 | 4.3 |
| weak | 31.4 | 28.7 | 47.5 |
| very weak | 7.3 | 4.8 | 5.8 |
| Total | 100 | 100 | 100 |

Table 3.73 Linking social capital by area

| | Area of NI | | |
|-------------|------------|---------|---------|
| | Belfast | East NI | West NI |
| very strong | 9.4 | 9.2 | 11.3 |
| strong | 32.2 | 36.6 | 41.5 |
| neither | 19.0 | 22.5 | 18.0 |
| weak | 29.9 | 24.8 | 24.2 |
| very weak | 9.6 | 6.8 | 5.0 |
| Total | 100 | 100 | 100 |

Table 3.74 Social Capital by area

| | Area of NI | | |
|-------------|------------|---------|---------|
| | Belfast | East NI | West NI |
| very strong | 27.0 | 31.0 | 35.3 |
| strong | 49.9 | 55.4 | 51.3 |
| neither | 3.6 | 1.6 | 1.6 |
| weak | 17.4 | 11.8 | 10.7 |
| very weak | 2.1 | 0.2 | 1.1 |
| Total | 100 | 100 | 100 |

Table 3.75 How much would you agree that this area is a close, tight knit community?

| | Limiting long standing illness | |
|----------------------------|--------------------------------|------|
| | Yes | No |
| Strongly Agree | 16.0 | 13.3 |
| Agree | 39.7 | 38.4 |
| Neither Agree nor Disagree | 20.8 | 22.6 |
| Disagree | 20.5 | 23.5 |
| Strongly Disagree | 3.0 | 2.2 |
| Total | 100 | 100 |

Table 3.76 How much would you agree that this is a place where people look after each other?

| | Limiting long standing illness | |
|----------------------------|--------------------------------|------|
| | Yes | No |
| Strongly Agree | 15.8 | 15.1 |
| Agree | 49.6 | 47.8 |
| Neither Agree nor Disagree | 18.4 | 22.6 |
| Disagree | 14.2 | 13.4 |
| Strongly Disagree | 2.0 | 1.1 |
| Total | 100 | 100 |

Table 3.77 How safe do you feel walking alone in this area after dark?

| | Limiting long standing illness | |
|-------------|--------------------------------|------|
| | Yes | No |
| Very safe | 24.2 | 34.6 |
| Fairly safe | 28.3 | 37.8 |
| Bit unsafe | 21.7 | 18.8 |
| Very unsafe | 21.1 | 7.5 |
| Dont Know | 4.7 | 1.3 |
| Total | 100 | 100 |

Table 3.78 How often do you travel to areas or through areas in which you feel less safe?

| | Limiting long standing illness | |
|--|--------------------------------|------|
| | Yes | No |
| every day, | 1.9 | 7.0 |
| several times a week, | 2.4 | 4.2 |
| about once a week, | 2.8 | 5.3 |
| several times a month, but not every wee | 2.4 | 3.8 |
| about once a month | 4.2 | 5.2 |
| about every other month | 1.2 | 2.1 |
| at most three or four times a year | 7.8 | 10.5 |
| or never? | 70.8 | 57.6 |
| Dont Know | 6.4 | 4.3 |
| Total | 100 | 100 |

Table 3.79 How often do you travel outside your area?

| | Limiting long standing illness | |
|--|--------------------------------|------|
| | Yes | No |
| every day, | 20.1 | 53.8 |
| several times a week, | 20.2 | 18.2 |
| about once a week, | 23.5 | 12.2 |
| several times a month, but not every wee | 9.1 | 5.5 |
| about once a month | 8.1 | 3.9 |
| about every other month | 1.2 | 1.2 |
| at most three or four times a year | 6.3 | 2.3 |
| or never? | 10.2 | 2.3 |
| Dont Know | 1.2 | 0.6 |
| Total | 100 | 100 |

Table 3.80 Do you belong to a club or organisation?

| | Limiting long standing illness | |
|-------|--------------------------------|------|
| | Yes | No |
| Yes | 39.7 | 51.8 |
| No | 60.3 | 48.2 |
| Total | 100 | 100 |

Table 3.81 Bridging social capital by limiting long standing illness?

| | Limiting long standing illness | |
|-------------|--------------------------------|------|
| | Yes | No |
| very strong | 11.1 | 19.7 |
| strong | 29.1 | 40.5 |
| neither | 6.3 | 4.2 |
| weak | 42.9 | 32.4 |
| very weak | 10.6 | 3.3 |
| Total | 100 | 100 |

Table 3.82 Would you say that you know most of the people in your area?

| | Household | | | |
|--|---------------|-------------------|----------------------|------------------|
| | 1 person only | mar/coh coup-kids | mar/coh coup-no kids | lone parent-kids |
| most of the people in your area, | 28.4 | 35.5 | 29.9 | 30.9 |
| many of the people in your area, | 20.8 | 22.9 | 21.1 | 24.2 |
| a few of the people in your area, | 46.2 | 39.7 | 46.2 | 38.9 |
| or that you do not know people in your a | 4.6 | 1.9 | 2.7 | 6.1 |
| Total | 100 | 100 | 100 | 100 |

Table 3.83 How much would you agree that most people who live in this area trust one another?

| | Household | | | |
|----------------------------|---------------|-------------------|----------------------|------------------|
| | 1 person only | mar/coh coup-kids | mar/coh coup-no kids | lone parent-kids |
| Strongly Agree | 11.9 | 11.6 | 11.9 | 10.1 |
| Agree | 46.7 | 54.9 | 55.2 | 41.9 |
| Neither Agree nor Disagree | 24.2 | 20.8 | 22.6 | 26.6 |
| Disagree | 15.2 | 11.6 | 8.3 | 20.1 |
| Strongly Disagree | 2.0 | 1.2 | 1.9 | 1.3 |
| Total | 100 | 100 | 100 | 100 |

Table 3.84 Would you say that you trust most people in your area?

| | Household | | | |
|---|---------------|-------------------|----------------------|------------------|
| | 1 person only | mar/coh coup-kids | mar/coh coup-no kids | lone parent-kids |
| most of the people in your area, | 31.4 | 39.1 | 39.4 | 29.0 |
| many of the people in your area, | 19.1 | 23.6 | 22.5 | 20.5 |
| a few of the people in your area, | 44.4 | 35.7 | 35.4 | 44.6 |
| or that you do not trust people in your | 5.2 | 1.6 | 2.8 | 5.9 |
| Total | 100 | 100 | 100 | 100 |

Table 3.85 How safe do you feel walking alone in this area after dark?

| | Household | | | |
|-------------|---------------|-------------------|----------------------|------------------|
| | 1 person only | mar/coh coup-kids | mar/coh coup-no kids | lone parent-kids |
| Very safe | 22.7 | 46.1 | 34.6 | 24.4 |
| Fairly safe | 31.1 | 35.8 | 41.5 | 32.8 |
| Bit unsafe | 24.1 | 13.3 | 14.7 | 26.7 |
| Very unsafe | 17.7 | 4.4 | 7.3 | 15.1 |
| Dont Know | 4.4 | 0.4 | 1.9 | 1.0 |
| Total | 100 | 100 | 100 | 100 |

Table 3.86 How often do you travel to areas or through areas in which you feel less safe?

| | Household | | | |
|---|---------------|-------------------|----------------------|------------------|
| | 1 person only | mar/coh coup-kids | mar/coh coup-no kids | lone parent-kids |
| every day, | 3.7 | 11.4 | 4.0 | 2.5 |
| several times a week, | 3.3 | 4.8 | 2.9 | 3.5 |
| about once a week, | 3.7 | 6.2 | 3.8 | 5.1 |
| several times a month, but not every wee | 3.5 | 3.3 | 3.6 | 2.9 |
| about once a month | 4.2 | 5.8 | 5.2 | 4.8 |
| about every other month | 1.5 | 2.3 | 1.3 | 2.5 |
| at most three or four times a year | 8.2 | 10.8 | 11.1 | 9.6 |
| or never? | 66.5 | 50.9 | 63.5 | 64.3 |
| Dont Know | 5.5 | 4.6 | 4.6 | 4.8 |
| Total | 100 | 100 | 100 | 100 |

Table 3.87 Do you belong to a club or organisation?

| | Household | | | |
|-------|---------------|-------------------|----------------------|------------------|
| | 1 person only | mar/coh coup-kids | mar/coh coup-no kids | lone parent-kids |
| Yes | 43.8 | 56.4 | 57.1 | 30.6 |
| No | 56.2 | 43.6 | 42.9 | 69.4 |
| Total | 100 | 100 | 100 | 100 |

Table 3.88 Bonding by household type

| | Household | | | |
|-------------|---------------|-------------------|----------------------|------------------|
| | 1 person only | mar/coh coup-kids | mar/coh coup-no kids | lone parent-kids |
| very strong | 41.1 | 57.0 | 55.2 | 41.4 |
| strong | 40.8 | 35.5 | 36.6 | 37.3 |
| neither | 5.0 | 2.1 | 2.1 | 4.5 |
| weak | 11.7 | 5.0 | 5.6 | 15.9 |
| very weak | 1.3 | 0.4 | 0.4 | 1.0 |
| Total | 100 | 100 | 100 | 100 |

Table 3.89 Bridging by household type

| | Household | | | |
|-------------|---------------|-------------------|----------------------|------------------|
| | 1 person only | mar/coh coup-kids | mar/coh coup-no kids | lone parent-kids |
| very strong | 14.3 | 24.3 | 18.2 | 10.2 |
| strong | 33.2 | 40.8 | 44.6 | 28.3 |
| neither | 5.4 | 4.6 | 3.1 | 6.4 |
| weak | 38.0 | 28.5 | 31.0 | 48.7 |
| very weak | 9.2 | 1.7 | 3.1 | 6.4 |
| Total | 100 | 100 | 100 | 100 |

Table 3.90 Linking by household type

| | Household | | | |
|-------------|---------------|-------------------|----------------------|------------------|
| | 1 person only | mar/coh coup-kids | mar/coh coup-no kids | lone parent-kids |
| very strong | 8.7 | 14.5 | 8.8 | 7.7 |
| strong | 32.9 | 41.6 | 40.2 | 39.0 |
| neither | 17.6 | 22.5 | 24.1 | 17.9 |
| weak | 30.4 | 19.1 | 22.2 | 28.4 |
| very weak | 10.4 | 2.3 | 4.8 | 7.0 |
| Total | 100 | 100 | 100 | 100 |

Table 3.91 Social capital by household type

| | Household | | | |
|-------------|---------------|-------------------|----------------------|------------------|
| | 1 person only | mar/coh coup-kids | mar/coh coup-no kids | lone parent-kids |
| very strong | 24.3 | 44.5 | 36.0 | 23.6 |
| strong | 54.2 | 48.6 | 56.1 | 52.5 |
| neither | 3.5 | 1.0 | 0.6 | 1.6 |
| weak | 16.5 | 6.0 | 6.9 | 21.0 |
| very weak | 1.5 | 0.0 | 0.4 | 1.3 |
| Total | 100 | 100 | 100 | 100 |