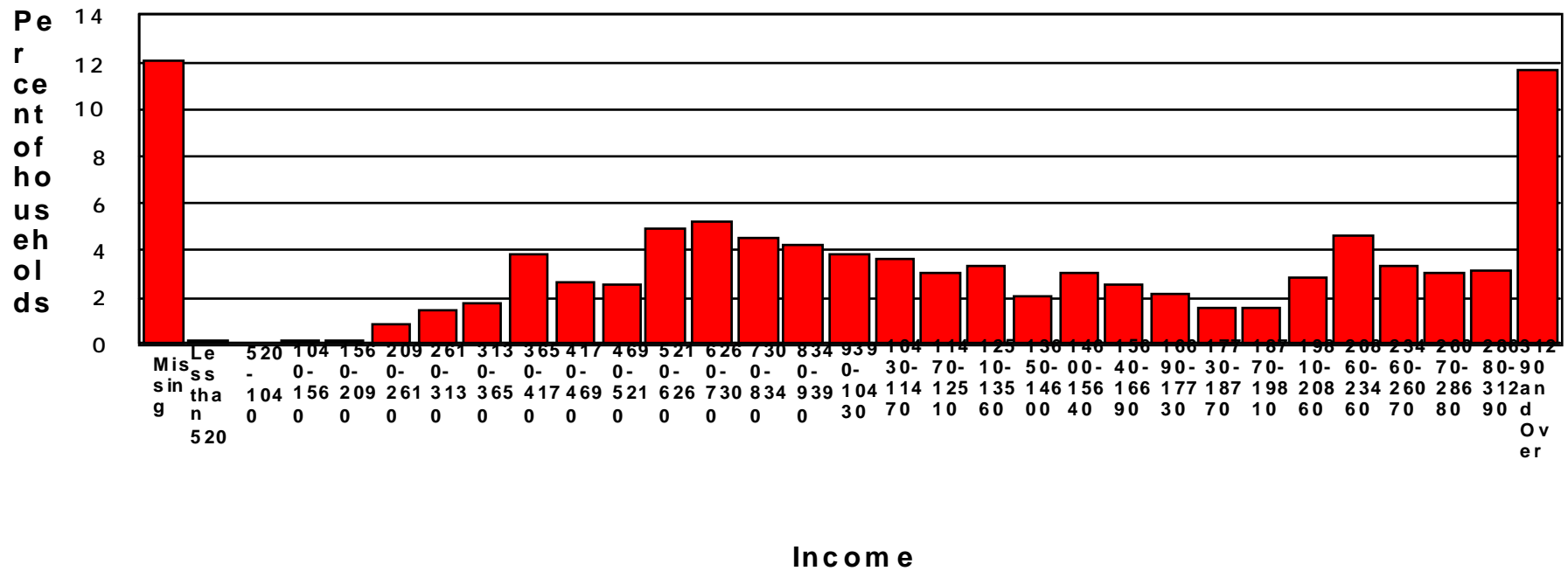


Figure 7 Gross household income in the CHS



Source: CSU.

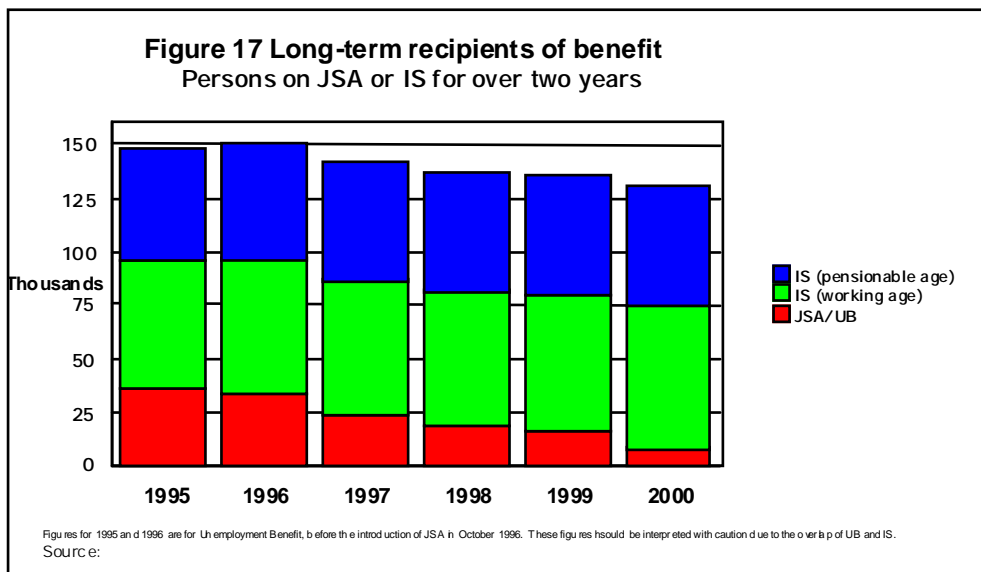
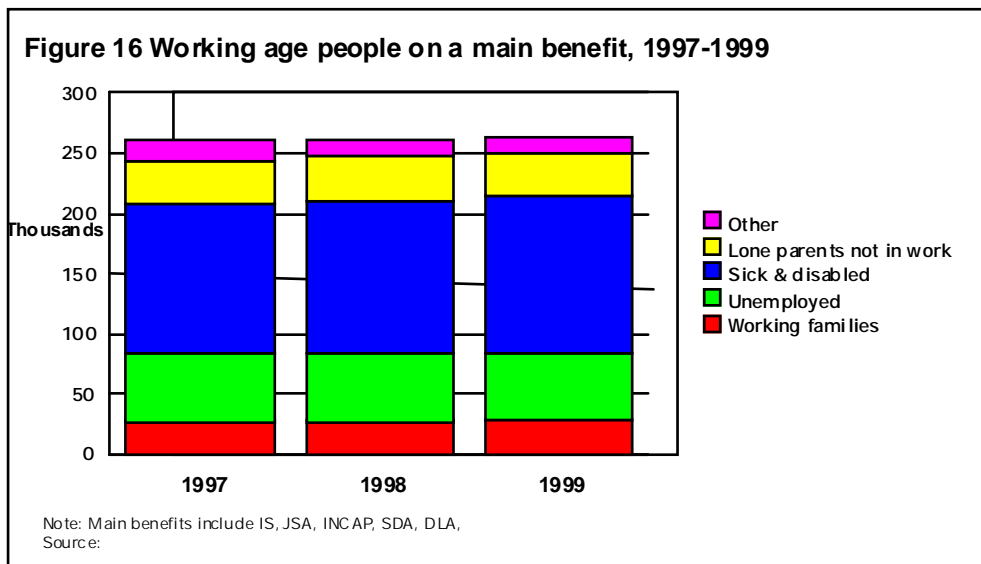
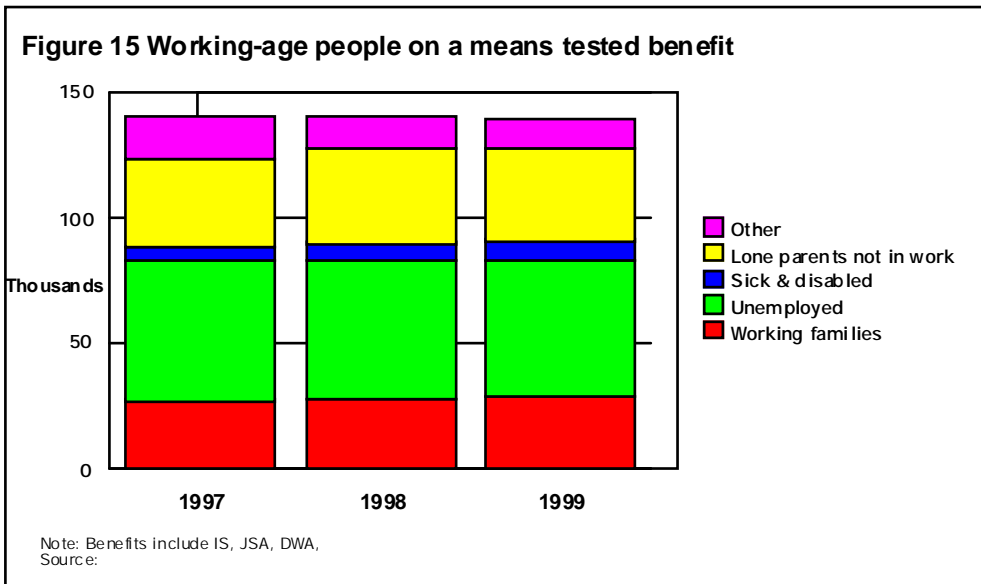


Table 7 Indicators for key policy areas

Indicator	Measure
Unemployment	
1 ILO Unemployed	Level and % of labour force
2 Duration of unemployment	
(a) ILO unemployed 1 year+	% of labour force
(b) Cumulative long-term unemployment	1 year+ in last three years
3 Individuals wanting paid work	Level, % of working-age population
Employment	
4 Employment rate	Working-age people in employment as % of working-age population
5 Non-employment rate	Working-age people without a job as % of working-age population
6 Households without paid work for 2+ years	Number, % of working-age households
7 Low pay	% in a job paid less than half male median earnings (index to GB, NI)
Health and social well-being	
Mortality	
8 Standardised mortality rate (SMR)	Per 1,000 persons, SMR 65 and 75
Adult health	
9 General health not good	Per cent
10 Limiting long-standing illness	Per cent
11 Disability	Per cent
12 GHQ12 score 3+	Per cent
Child health	
13 Low birth weight babies	Per 1,000 births
14 Child health	
Education	
Children	
15 Low attainment at school	% 16 year-olds with, No GCSEs; No grades A-C, at least 1 D-G
Adults	
16 Without a basic qualification	Per cent
17 Adult literacy	Per cent scoring 1-2 on literacy scales
Geographical access to services	
18 Low income individuals w/poor geographical access to services	Number, % of low income persons in bottom three deciles of Noble Geographical Access Index
Social environment	
19 Fear of crime	% aged 60+ reporting their lives are greatly affected by fear of crime
20 Low income individuals living in poor quality environments	Quality of Local Living Conditions Index
Housing	
21 Poor housing index	% of dwellings, population

