



Office of the

**First Minister and  
Deputy First Minister**

[www.ofmdfmi.gov.uk](http://www.ofmdfmi.gov.uk)

# **Indicators of Social Need for Northern Ireland**

## **ACKNOWLEDGEMENTS**

The information presented below was only possible through the support provided by: Northern Ireland Statistics & Research Agency, Central Survey Unit in providing Continuous Household Survey data and Expenditure and Food Survey data; the Statistics and Research Branch of the Department of Enterprise, Trade and Investment for providing Labour Force Survey data and New Earnings Survey data; the Statistics and Research Branch of the Department of Education for providing School Leavers Survey data; the Social Welfare Statistics and Consultancy Branch of the Department for Social Development for providing social security data. The House Condition Survey data was sourced from the Northern Ireland Housing Executive.

### **EQUALITY DIRECTORATE RESEARCH BRANCH**

**Neil Marsden**  
**Michael Woods**  
**Alan McClelland**

# CONTENTS

	<b>Page</b>
Indicator Summary	4
Summary Tables	11
Introduction	16
Children	19
Young Adults	29
Adults	32
Older People	54
Macro Indicators	58
Poverty Measures	72
Annex 1 Indicator Development	82

# INDICATOR SUMMARY

## TRENDS: CHILDREN

### Workless<sup>1</sup> Households

1. The proportion of children who are in workless households has decreased from 21.2% in 1992 to 16.6% in 2003. The proportion of children who are in workless households where the Head of Household (HoH) is Catholic is consistently higher than that of households where the HoH is Protestant.

### Key Benefits<sup>2</sup>

2. The number of children living in families claiming a key benefit has fallen from 144,640 in 1998 to 119,780 in 2003.

### Education

3. The proportion of school leavers achieving no qualifications fell between 1992/93 (4.9%) and 1998/99 (2.7%). It has risen in recent years to 5.2% in 2001/02. Males, pupils entitled to free school meals and those from minority ethnic backgrounds are more likely to leave school without any qualifications.
4. The number of pupils achieving no GCSE's has decreased from 7.1% in 1992/93 to 5.8% in 2001/02. Males, pupils entitled to free school meals, and those from minority ethnic backgrounds are more likely to leave school without any GCSE's.
5. The proportion of pupils not achieving 5 or more GCSEs grades A\*-G, has fallen from 19.8% in 1992/93 to 14.6% in 2001/02. Those who are entitled to free school meals and males are more likely to leave school without achieving this level of qualifications.
6. The proportion of pupils not achieving 5 or more GCSEs grades A\*-C has fallen from 50.5% in 1992/93 to 41.3% in 2001/02. This decrease has been greater for females than for males. Pupils who are entitled to free school meals are more likely not to achieve this level of qualifications.

### Housing

7. The proportion of households with at least one child living in homes that are unfit fell between 1996 (2.7%) and 2001 (1.8%).

---

<sup>1</sup> A workless household is a household where no one is in employment.

<sup>2</sup> Key benefits refer to Jobseekers Allowance, Incapacity Benefit, Severe Disablement Allowance, Disability Living Allowance and Income Support.

8. The proportion of children who live in homes that are below bedroom standard has fallen between 1992/93 (14%) and 2003/04 (9%). Across five-year age bands, the proportion of children living in homes below the bedroom standard is lowest for those aged 0-5.

## **TRENDS: YOUNG ADULTS**

### **Employment**

9. The proportion of persons aged 16-24 who are ILO unemployed has fallen from 10.3% in 1992 to 7.0% in 2001.

### **Education**

10. The proportion of people aged 16-24 without a basic educational qualification has fallen from 38.9% in 1992 to 30.0% in 2001. Males are more likely to lack a basic education as are young adults with a disability. The proportion of Catholics aged 16-24 who do not have a basic education has decreased at a greater rate than that of Protestants for this age group.

## **TRENDS: ADULTS**

### **Employment**

11. The proportion of working age persons in employment has increased from 63.2% in 1992 to 66.7% in 2001. Employment rates are lower for females, Catholics, people with a disability, people aged 16-24 and single people. The rates for people with a disability are less than one half the rates for non-disabled persons (33.0% compared to 74.9%). Working age employment rates have risen most strongly for Catholics and people aged 25-44.
12. The proportion of working age people who are unemployed has decreased from 9.1% in 1992 to 4.5% in 2001. Whilst unemployment is higher amongst males, Catholics and single people, the greatest falls over time in unemployment has been amongst males and Catholics.
13. The proportion of economically active persons who are long-term unemployed has fallen from 7.4% in 1992 to 2.4% in 2001.
14. The proportion of disabled persons of working age in employment increased from 29.2% in 1998 to 33.0% in 2001. The gap between married and single has widened in recent years. This is due to the proportion of single disabled persons in employment remaining relatively static and an increase in the proportion of married disabled persons in employment.

15. The proportion of lone parents of working age in employment increased from 40.8% in 1992 to 49.9% in 1997. It has remained static in recent years, with a 2003 level of 48.5%. When analysed by religion, the difference between Catholic lone parents and Protestant lone parents has tended to fluctuate, with a difference of 11.8% (Catholic 40.5%, Protestant 52.3%) in 2000 and a difference of 23.9% (Catholic 34.8%, Protestant 58.7%) in 2001.
16. The proportion of persons aged over 50 in employment has been stable. Employment rates are higher among males, Protestants and married people.
17. The proportion of persons of working age who are not in employment but say they would like paid work has decreased from 15.4% in 1992 to 10.2% in 2001. Rates are higher amongst Catholics and those with a disability.
18. The proportion of workless households, where the head of household has been long-term unemployed, has decreased from 10.0% in 1994 to 4.2% in 2001.
19. Working age economic inactivity rates have remained relatively static between 1992 and 2001. The overall proportion of those of working age who are economically inactive was 27.7% in 1992 and 28.8% in 2001. There are clear group differences, particularly between males and females, those with and those without a disability, and between age groups.

### **Workless and work-rich<sup>3</sup> households**

20. The proportion of working age persons in workless households has remained fairly stable over the years 1992 to 2003. It was 14.7% in spring 1992 and reached a minimum of 12.7% in spring 2003. The proportions of working age persons in workless households are higher for those with a disability, people aged 55-64, single people and Catholics.
21. The proportion of working age adults living in work-rich households has increased from 33.8% in spring 1992 to 46.8% in spring 2003. All groups saw increases in the proportion of working age adults living in work-rich households.

### **Education**

22. The proportion of persons of working age without a qualification has decreased from 37.0% in 1992 to 25.4% in 2001. People with a disability and people aged between 55-64 are much more likely to be without a qualification.

---

<sup>3</sup> A work-rich household is a household where everyone is in employment.

## **Labour Force Community Differential Measures**

23. The Catholic employment gap<sup>4</sup> for men has decreased from 3.9% in 1992 to 1.4% in 2001. The employment gap for women has fluctuated over the years and, at 0.6% in 2001, is at a similar level to 1992. Overall, the Catholic employment gap has decreased from 2.5% to 1.0% between 1992 and 2001.
24. The ratio of unemployment rates<sup>5</sup> has remained relatively constant over ten years. The ratio was at its highest for men in 1997 at 2.9 and at its highest for women in 1995 at 1.9.
25. The unemployment gap<sup>6</sup> for men has fallen from 14.1% in 1992 to 5.2% in 2001. The unemployment gap for women has remained stable (2.7% in 1992, 2.2% in 2001). The overall unemployment gap has fallen from 9.3% to 4.0% in the same period.

## **Income**

26. Average gross weekly earnings for men has increased from £298.20 in 1992 to £437.70 in 2003, an increase of 46.8%. Average gross weekly earnings for women has increased from £224.20 to £355.20 for the same period representing an increase of 58.4%.
27. Median earnings for men has increased from £258.80 in 1992 to £366.60 in 2003, an increase of 41.6%. The median earnings for women has increased from £193.30 to £307.30 for the same period representing an increase of 59.0%.
28. The ratio of the 10<sup>th</sup> percentile to 90th percentile of earnings has decreased slightly over the past eleven years. The ratio for males was 3.7 in 1992 and 3.4 in 2003. The ratio for females was 3.4 in 1992 and 3.0 in 2003. Overall, the ratio has decreased from 3.7 to 3.2.

## **TRENDS: OLDER PEOPLE**

### **Income**

29. The proportion of pensioners with no other income apart from state retirement or other state benefits has been roughly constant with the exception of 2000/01, when the level rose to 51.4%.

---

<sup>4</sup> The employment gap measures the difference between the representation of a community in the economically active population and its representation among those in employment.

<sup>5</sup> The ratio of unemployment rates is the ratio of the highest to lowest unemployment rate.

<sup>6</sup> The unemployment gap is the absolute difference between the unemployment rates of Catholics and Protestants.

30. Pensioners are consistently spending a greater proportion of weekly income on necessities when compared with all households. The proportion spent on necessities by pensioner households was 54.6% of weekly income in 1992, compared with 45.6% spent by all households. In 2001/02, the figure was 52.9% for pensioner households and 35.6% for all households. A modest downward trend for both pensioner households and all households can be detected over the period.

## **Housing**

31. The proportion of households where the head of household is aged 60 or over and live in homes that are unfit was 8.2% in 1996 and 4.4% in 2001.

## **TRENDS: MACRO INDICATORS**

### **Income**

32. Between 1992 and 2001/02 there has been a decrease in social security as a proportion of income for the bottom quartile, from 89.0% to 80.0%. The second quartile increased from 53.0% in 1992 to 63.0% in 2000/01, although it dropped down to 56.0% in 2001/02. The third quartile has also seen increases between 1992 and 2000/01, from 15.0% to 21.0%, although it also dropped in 2001/02 to 16.0%. The top quartile has remained relatively static.

### **Key Benefits**

33. The number of working age people in receipt of a key benefit has decreased from 235,780 in February 1998 to 227,200 in February 2003.

### **Workless and Work-rich Households**

34. The proportion of workless households has remained relatively stable between 1992 and 2003. It was at its highest in 1994 (39.3%) and lowest in 1997 (34.1%). Households where the head is female are more likely to be workless as are single person households, households comprising a couple with no children, lone parent households, households with an adult with a disability and households with no children under 16.
35. The proportion of work-rich households has increased from 29.1% in 1992 to 39.0% in 2003. Proportions of work-rich households are lower in households headed by a female, one person households, and households with an adult with a disability.

## **Housing**

36. The proportion of households living in unfit homes fell between 1996 (5.5%) and 2001 (2.8%).
37. The proportion of households that live in homes that are below bedroom standard has been falling for the past ten years, from 10.0% in 1992/93 to 5.0% in 2003/04. All groups have seen falls, with the exception of single households.
38. The number of homeless households increased from 10,768 in 1995/96 to 16,426 in 2002/03. The household types with the highest incidences of homelessness are single males aged between 26 and 59 (3,675 in 2002/03) and families (5,871 in 2002/03).

## **Health**

39. Expectation of life for males has increased from 73.0 years in 92/94 to 74.8 years in 99/01. This represents an increase of 2.5%. The expectation of life for females has increased from 78.7 years to 79.8 years for the same period. This represents an increase of 1.4%.

## **POVERTY MEASURES**

### **Gini Coefficient Measure of Income and Expenditure**

40. The Gini coefficients<sup>7</sup> for gross household income, disposable household income and household expenditure for Northern Ireland have indicated a general decrease in inequality between 1998/99 and 2002/03.

### **Low Income Risk<sup>8</sup> and Low Income Concentration<sup>9</sup>**

41. The risk of being in a low-income household is highest for children and young adults, drops below average for people in their prime working years and edges up again once retirement age is reached, particularly for those aged 75 and over.
42. Individuals living in households with three or more dependent children have a 47% risk of being in the bottom 30% of the income distribution.

---

<sup>7</sup> The Gini Coefficient measures the extent of income inequalities. A value of 0% represents a totally equitable society and conversely a value of 100% represents total inequality.

<sup>8</sup> Risk of low income is defined as the percentage of households with a particular characteristic that is in the bottom 30% of the income distribution.

<sup>9</sup> The concentration of low income is defined as a particular type of household's percentage share of all households in low income.

## **Consensual Poverty**

43. Thirty-six per cent of Catholic households are in consensual poverty<sup>10</sup> compared with 25% of Protestant households.
44. Fifty-six per cent of households with one or more disabled people are in consensual poverty compared to 29% of households with no-one with a disability.

## **Northern Ireland Households Below Average Income – selected data**

45. Most income from those in the bottom quintile of the income distribution is derived from benefits or tax credits in contrast to the remaining four quintiles.
46. Children, as a group, have higher proportions living below 50, 60 and 70% of median household income.

---

<sup>10</sup> Consensual poverty refers to those in households below a certain income who lack 3 or more necessities (items or activities) determined by more than 50% of the population to represent a necessity of life.

## SUMMARY TABLES

Group	Indicator	Source	Overall Trend	Direction of latest data	Variation across groups
Children					
1.1	The proportion of children living in workless households	DETI Labour Force Survey	Decrease	Decrease	Higher amongst households where the head of households is Catholic
1.2	The number of children living in families claiming a key benefit	DSD	Decrease	Decrease	
1.3	The proportion of school leavers achieving no qualifications	DE	Decrease from 1992/93 to 1998/99, increase in recent years	Increase	Higher amongst those entitled to free school meals; amongst Catholic managed schools; amongst males; and those with a minority ethnic background
1.4	The proportion of pupils achieving no GCSE's	DE	Decrease	Stable	Higher amongst those entitled to free school meals; amongst males; and amongst Catholic managed schools
1.5	The proportion of pupils not achieving 5+ GCSE's (A*- G)	DE	Decrease	Stable	Higher amongst those entitled to free school meals; and amongst males
1.6	The proportion of pupils not achieving 5+ GCSE's (A*- C)	DE	Decrease	Decrease	Higher amongst those entitled to free school meals; and amongst males
1.7	The proportion of households with at least one child that live in homes that are unfit	NIHE: House Conditions Survey	Decrease	Decrease	
1.8	The proportion of children that live in homes that are below bedroom standard	NISRA: Continuous Household Survey	Decrease	Stable	Lowest for those aged 0-5.

Group	Indicator	Source	Overall Trend	Direction of latest data	Variation across groups
Young Adults					
2.1	The proportion of young adults aged between 16 – 24 unemployed	DETI: Labour Force Survey	Decrease	Increase	
2.2	The proportion of young adults aged between 16 – 24 who do not have a basic education (NVQ level 2 or equivalent)	DETI: Labour Force Survey	Decrease	Decrease	Higher amongst males compared to females. Higher for those with a disability than for those without a disability.
Adults					
3.1	The proportion of working age adults who are in employment	DETI: Labour Force Survey	Increase	Increase	Higher amongst males and Protestants. Lower for those with a disability than those without and lower for those aged 16-24 and 55-65.
3.2	The proportion of working age adults who are unemployed	DETI: Labour Force Survey	Decrease	Stable	Higher amongst males; Catholics; single; those aged between 16 and 24.
3.3	The proportion of economically active working age adults who are long-term unemployed	DETI: Labour Force Survey	Decrease	Stable	Higher among Catholics.
3.4	The proportion of working age adults with disabilities in employment	DETI: Labour Force Survey	Increase	Stable	Higher among males; Protestants; and the married. Lowest for those aged 55-64.
3.5	The proportion of lone parents of working age in employment	DETI: Labour Force Survey	Increase	Stable	Higher for Protestants.
3.6	The proportion of those aged over 50 in employment	DETI: Labour Force Survey	Stable	Stable	Higher amongst those without a disability; males; married people; and Protestants.
3.7	The proportion of persons of working age who are not in employment but would like a job	DETI: Labour Force Survey	Decrease	Stable	Higher amongst single people; Catholics; and for those with a disability.

Group	Indicator	Source	Overall Trend	Direction of latest data	Variation across groups
3.8	The proportion of workless households where the head of household is long-term unemployed	DETI: Labour Force Survey	Decrease	Stable	
3.9	Working age economic inactivity rate	DETI: Labour Force Survey	Stable	Stable	Higher among: females; Catholics; those with a disability; those aged between 16-24 and 55-64; and the single.
3.10	The proportion of working age persons in workless households	DETI; Labour Force Survey	Stable	Stable	Higher among: Catholics; those aged 55-64; and those who are single.
3.11	The proportion of working age adults living in work-rich households	DETI; Labour Force Survey	Increase	Increase	Higher among: Protestants; those without a disability; those aged 25-44; and the married.
3.12	The proportion of working age persons without a qualification	DETI; Labour Force Survey	Decrease	Decrease	Higher amongst: married people; and Catholics; with a disability. Increases with age.
	Labour Force Community Differential measures:	OFMDFM – from Labour Force Survey			
3.13a	Catholic employment gap		Decrease	Stable	Higher for males.
3.13b	Ratio of Protestant to Catholic unemployment rates		Stable	Stable	Higher for males.
3.13c	Unemployment gap				
3.14a	Average gross weekly earnings	DETI; NES	Decrease Increase	Stable Increase	
3.14b	Median gross weekly earnings	DETI; NES	Increase	Increase	
3.14c	Mean gross weekly earnings – ratio of 10 <sup>th</sup> percentile to 90 <sup>th</sup> percentile	DETI; NES	Stable	Stable	

Group	Indicator	Source	Overall Trend	Direction of latest data	Variation across groups
Older People					
4.1	The proportion of pensioners with no income other than state retirement pension and state benefits	NISRA: Family Expenditure Survey	Stable	Stable	
4.2	Pensioners' household weekly spend on necessities	NISRA: Family Expenditure Survey	Decrease	Decrease	Higher for pensioner households than for all households.
4.3	The proportion of households where the head of the household is aged 60 or over that live in homes that are unfit	NIHE: House Conditions Survey	Decrease	Decrease	

Group	Indicator	Source	Overall Trend	Direction of latest data	Variation across groups
Macro Indicators					
5.1a	The sources of household income by quartile of gross weekly household income	NISRA: Family Expenditure Survey	Decrease in social security as a % of income for bottom quartile.	Decrease in social security as a % of income for bottom quartile.	The main source of income in the lowest 2 quartiles are social security benefits, whilst the main source of income in the highest 2 quartiles are wages and self-employment
5.1b	Wages and salaries as a proportion of income.	NISRA: Family Expenditure Survey	Stable	Stable	
5.2	The number of working age people in receipt of a key benefit	DSD	Decrease	Increase	
5.3	The number of individuals claiming JSA or IS for a period of 2 years or more	DSD	Stable	Increase	
5.4a	The proportion of households which are workless	DETI: Labour Force Survey	Decrease	Stable	Higher for females than males; higher for one persons and lone parent households; higher for households with disabled adults.
5.4b	The proportion of households which are work-rich		Increase	Increase	Higher for Protestants; males; couples with children; and households with no-one with a disability.
5.5	The proportion of households that live in homes that are unfit	NIHE: House Conditions Survey	Decrease	Decrease	
5.6	The proportion of households that live in homes below the bedroom standard	NISRA: Continuous Household Survey	Decrease	Stable	Higher amongst those with no illness compared to those with long-standing illness; and amongst those with dependent children. Decreases with age.
5.7	Homeless households	NIHE	Increase	Increase	Higher for families and single males aged between 26 and 59
5.8	Life expectancy at birth	NISRA: GRO	Increase	Increase	Higher for females.

## **INTRODUCTION**

The first report detailing a range of social need-relevant indicators for Northern Ireland was published in December 2002 ('Socio-Economic Indicators for Northern Ireland' see: [www.research.ofmdfmi.gov.uk](http://www.research.ofmdfmi.gov.uk)). Compiled to assist the evaluation of the New Targeting Social Need (New TSN) policy at that time, the report detailed 36 socio-economic indicators of social need reflecting a broad statistical perspective. The current report represents a further development and refinement following commentary on the report through the evaluation of New TSN.

### **NEW TARGETING SOCIAL NEED**

New TSN represented the Northern Ireland policy for combating social exclusion and poverty. The Executive set out its New TSN policy in Making it Work: the New TSN Action Plans Report published in March 2001. Through both the Programme for Government and Making it Work, the Executive made clear its commitment to evaluate New TSN by the end of 2002.

New TSN is a policy running through all relevant existing spending programmes across all Northern Ireland Departments, including some Next Steps Agencies, Non-Departmental Public Bodies and North-South Implementation Bodies. It requires Departments to change the way in which they target the money they have within spending programmes so that more of it can be used to benefit those who are most disadvantaged.

New TSN is not just about money; it is also about targeting efforts. This means changing the way things are done so that programmes and services are delivered in ways that are more helpful to disadvantaged people.

New TSN comprises three complementary elements:

- it has a particular focus on tackling unemployment and increasing employability;
- it aims to tackle inequalities in areas such as health, education and housing; and the problems of disadvantaged areas; and
- it includes Promoting Social Inclusion (PSI) through which Departments work together and with partners outside Government to identify and tackle factors which contribute to social exclusion; and to undertake positive initiatives to improve and enhance the life and circumstances of the most deprived and marginalized people in our community.

## **THE EVALUATION OF NEW TSN**

The Northern Ireland Executive had committed to an evaluation of New TSN by the end of 2002. The evaluation was conducted externally and independently focusing on: Departmental Action Plans; the cross-Departmental implementation of the policy (process issues); and area-based case studies. The evaluators also considered a range of research and statistical work in the context of the evaluation.

The evaluators provided direct comment on the original indicators report and proposed a number of changes. The evaluation report can be accessed at: [www.research.ofmdfmi.gov.uk](http://www.research.ofmdfmi.gov.uk).

## **THE INDICATORS IN CONTEXT**

OFMDFM is currently consulting on proposals for the development of an Anti Poverty Strategy following the evaluation of the New TSN policy. The consultation document proposes a range of specific strategic targets underpinning the overall aim of the strategy to improve the income and living conditions of the most disadvantaged. The specific strategic targets proposed reflect a range of poverty measures including absolute and relative income targets, and mixed income and material deprivation targets.

As the consultation document highlights, income measures and mixed income and material deprivation measures reflect a particular focus on poverty and social exclusion. These indicators are intended to supplement this picture, and provide a broader social need perspective.

It is likely that the indicators will develop further over time reflecting: responses to the consultation; research development; and availability of new sources of data. Annex 1 contains a fuller description of the development of these indicators and potential areas for further development.

## **STRUCTURE OF THE REPORT**

There are six discrete sections in this report focusing firstly on the four key stages of the life cycle:

- Children
- Young Adults
- Adults
- Older people

These are supplemented by two additional sections reflecting a macro perspective and a poverty measurement perspective.

## GUIDANCE NOTES

The current indicators are set, where possible, within a broader time period to the previous report to facilitate a longer term perspective on change. This is particularly relevant as many of the sources are derived from household survey research, estimates from which, are subject to sampling error and confidence limits. In that context, the broad trend over time is considered more important than year-on-year changes which may reflect the impact of sampling error in as much as they reflect real change.

The issue of sampling error and confidence limits is particularly relevant where estimates, for example unemployment rates, are relatively low. In that context, it is particularly important to view trends over time rather than year-on-year change.

Section 75 and Schedule 9 to the Northern Ireland Act 1998, came into force on 1 January 2000. The provisions place a statutory obligation on public authorities (Northern Ireland departments, most non-departmental public bodies, District Councils and other bodies including UK departments designated by the Secretary of State) to carry out their functions relating to Northern Ireland with due regard to the need to promote equality of opportunity

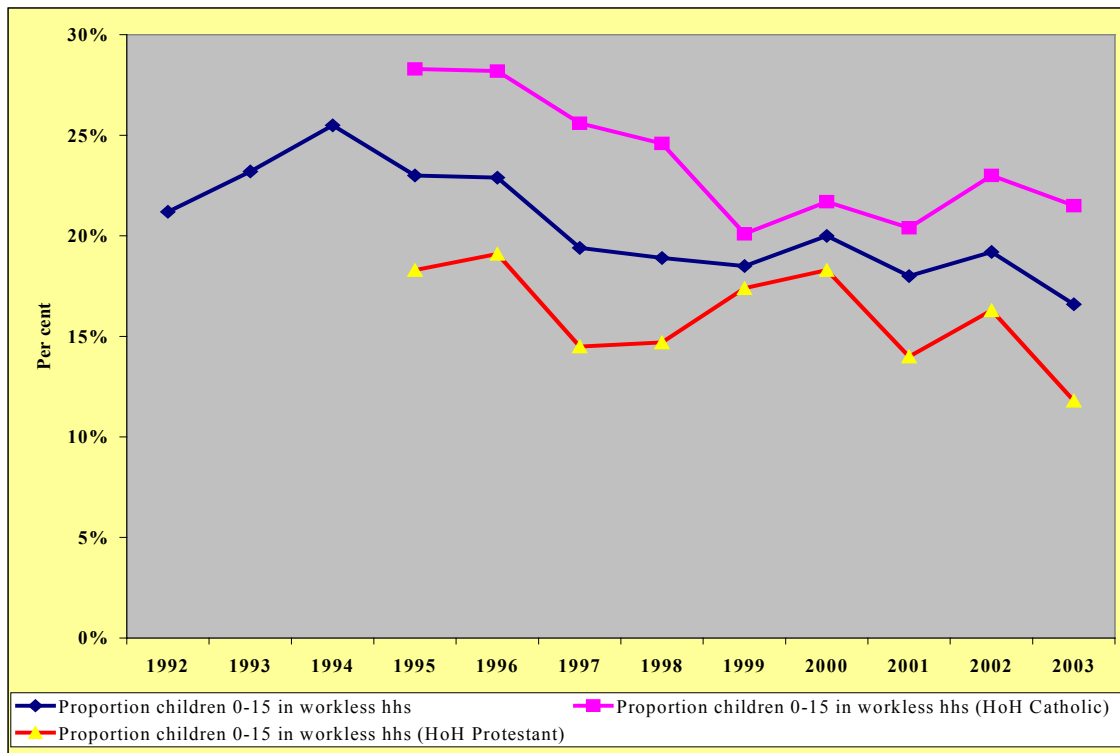
- between persons of different religious belief, political opinion, racial group, age, marital status or sexual orientation;
- between men and women generally;
- between persons with a disability and persons without; and
- between persons with dependants and persons without.

This report has attempted to reflect Section 75 perspectives and the nine categories highlighted where possible, in addition to a number of other analytical perspectives. The constraints placed on this approach are essentially the ability of the data sources to provide that information. Some data sources may not routinely collect the categorical information required, whilst other sources are simply not robust enough to enable analysis at that particular level of detail.

It should not be assumed that where Section 75-specific analyses are not included that no difference amongst groups exists. Similarly, it should not be assumed that no difference exists among other particular groups of interest (for example individuals on low incomes or differences between people with different levels of educational qualifications) outwith those groups mentioned under Section 75 or included in the analyses.

# **CHILDREN**

## Indicator 1.1 Proportion of children living in workless households



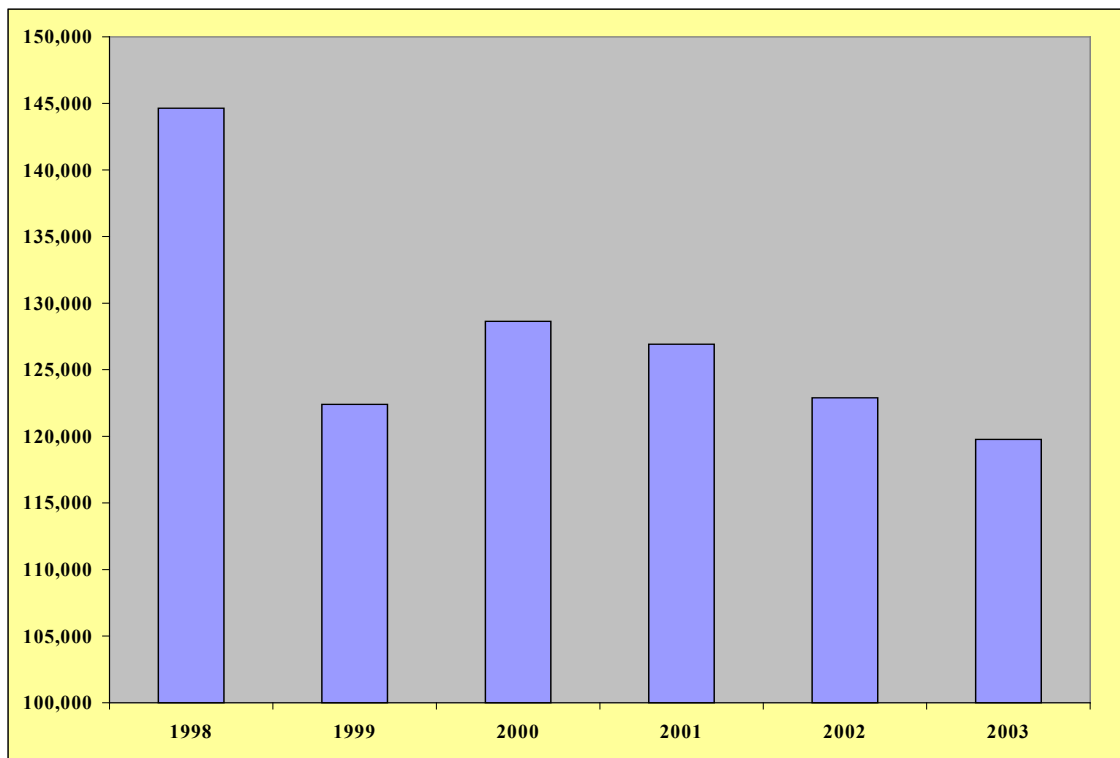
Source: Labour Force Survey, DETI

Period	Proportion of children 0-15 in workless households	Proportion of children 0-15 in workless households (HoH Catholic)	Proportion of children 0-15 in workless households (HoH Protestant)
	%	%	%
1992	21.2		
1993	23.2		
1994	25.5		
1995	23.0	28.3	18.3
1996	22.9	28.2	19.1
1997	19.4	25.6	14.5
1998	18.9	24.6	14.7
1999	18.5	20.1	17.4
2000	20.0	21.7	18.3
2001	18.0	20.4	14.0
2002	19.2	23.0	16.3
2003	16.6	21.5	11.8

Note:

1. A workless household is a household where no one is in employment.
2. Figures are for spring of each year.

Indicator 1.2 The number of children living in families claiming a key benefit



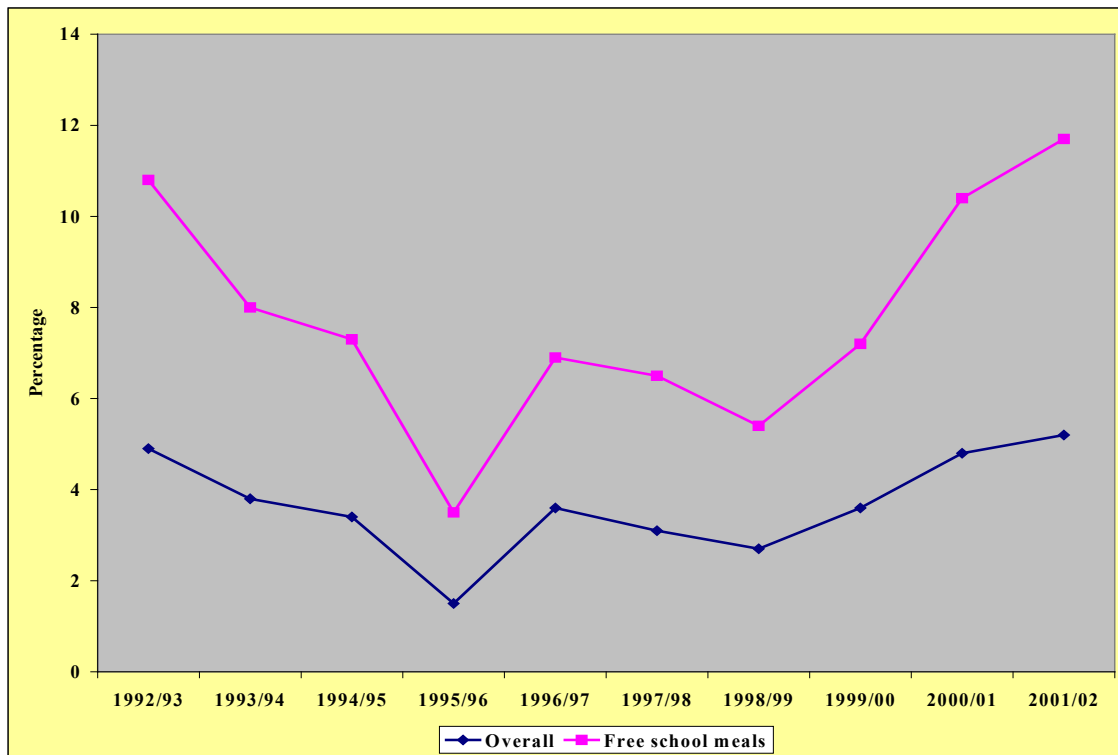
Source: DSD

<b>Number of children living in families claiming a key benefit</b>	
1998	144,640
1999	122,400
2000	128,640
2001	126,920
2002	122,900
2003	119,780

Notes:

1. Figures are based on a 5% sample of claimants at February of the relevant year.
2. Children are defined as aged under 16. Children whose age was not known were not included.
3. Key benefits refer to Job Seekers Allowance, Incapacity Benefit, Severe Disablement Allowance, Disability Living Allowance and Income Support.

### Indicator 1.3 Proportion of pupils achieving no qualifications



Source: DE (School Leavers Survey)

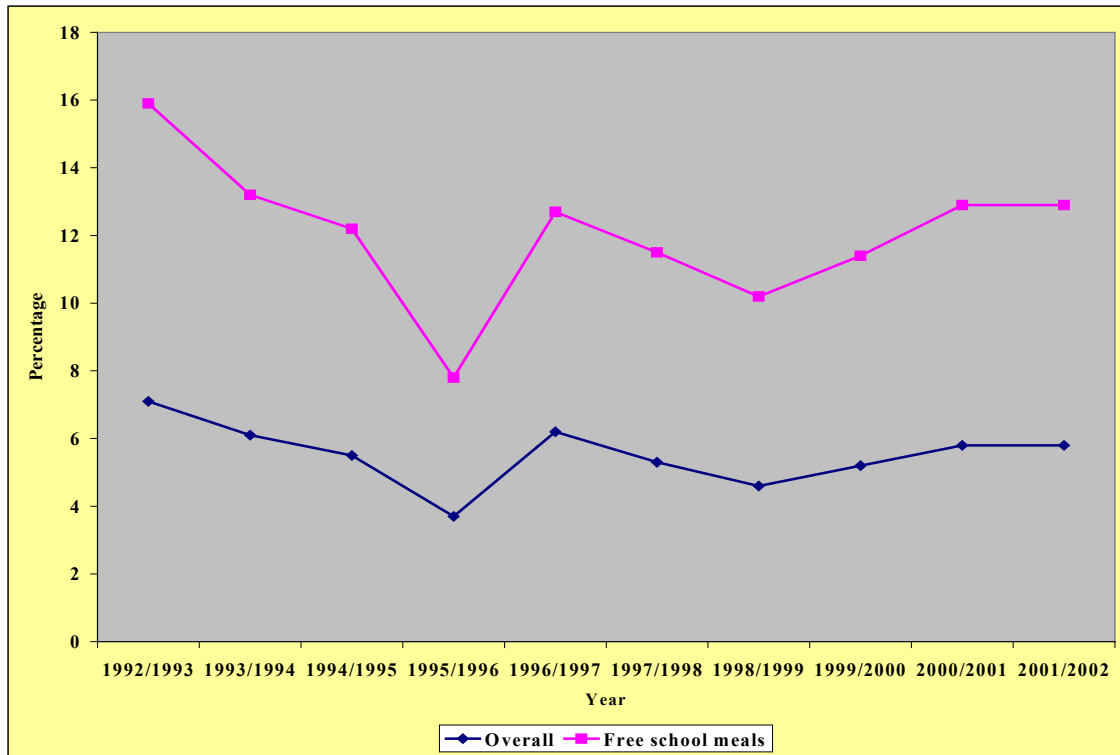
	OVERALL	GENDER		RELIGION		ENTITLED TO FREE SCHOOL MEALS	MINORITY ETHNIC BACKGROUND <sup>(1)</sup> <sup>(2)</sup>
	%	Female	Male	Catholic Managed	Other Managed		
1992/1993	4.9	2.9	6.8	6.3	3.6	10.8	
1993/1994	3.8	2.2	5.3	4.8	2.7	8.0	
1994/1995	3.4	1.9	4.8	4.3	2.5	7.3	
1995/1996 <sup>(3)</sup>	1.5	0.9	2.1	2.0	1.1	3.5	
1996/1997	3.6	2.7	4.5	4.3	3.0	6.9	
1997/1998	3.1	2.3	3.9	3.9	2.3	6.5	8.2
1998/1999	2.7	1.6	3.7	3.1	2.3	5.4	7.5
1999/2000	3.6	2.5	4.6	4.1	3.1	7.2	6.3
2000/2001	4.8	3.2	6.4	5.5	4.3	10.4	14.0
2001/2002	5.2	3.0	7.4	5.9	4.7	11.7	7.8

<sup>(1)</sup> Travellers are included in the figures for Minority Ethnic Background.

<sup>(2)</sup> Minority Ethnic Background figures are only available from 1997/1998.

<sup>(3)</sup> Qualification data were missing for 3% of school leavers in 1995/96, as a result, any apparent change in figures between 1994/95 and 1996/97 needs to be seen in that context.

## Indicator 1.4 Pupils achieving no GCSE's



Source: DE (School Leavers Survey)

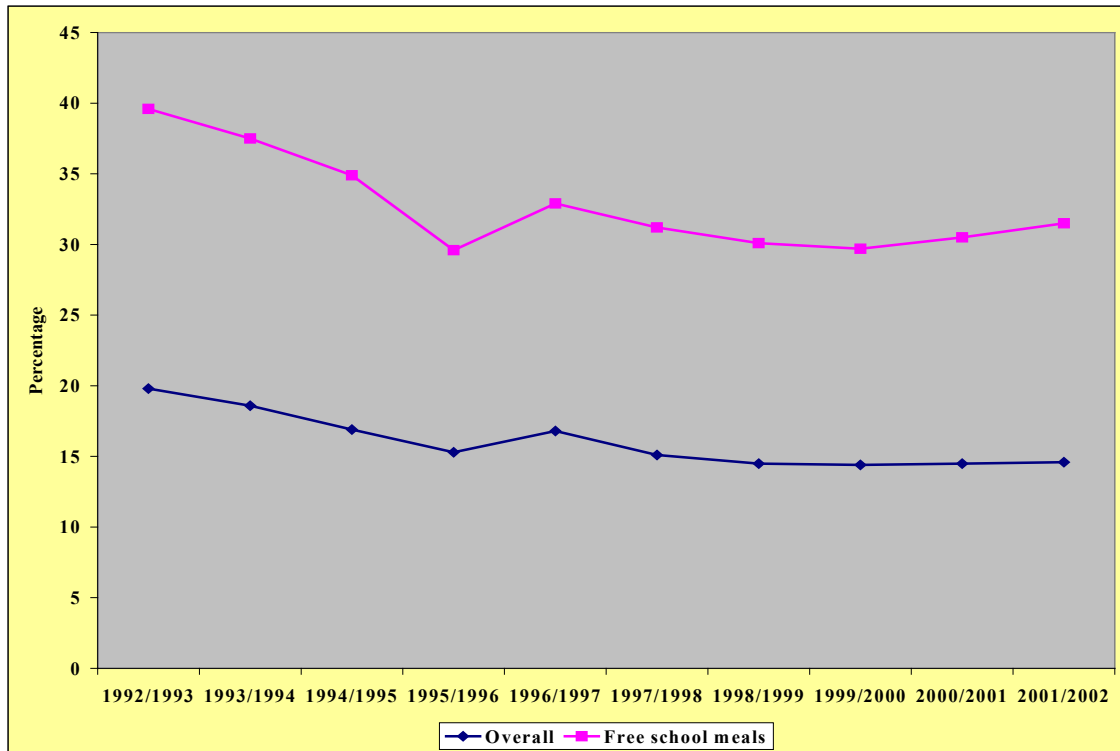
	OVERALL	GENDER		RELIGION		ENTITLED TO FREE SCHOOL MEALS	MINORITY ETHNIC BACKGROUND <sup>(1)</sup> <sup>(2)</sup>
		Female	Male	Catholic Managed	Other Managed		
	%	%	%	%	%	%	%
1992/1993	7.1	5.3	8.9	8.6	5.7	15.9	
1993/1994	6.1	4.0	8.1	7.0	5.3	13.2	
1994/1995	5.5	3.4	7.5	6.7	4.4	12.2	
1995/1996 <sup>(3)</sup>	3.7	2.3	5.0	4.4	3.0	7.8	
1996/1997	6.2	4.5	7.8	7.1	5.3	12.7	
1997/1998	5.3	3.6	7.1	6.2	4.5	11.5	13.9
1998/1999	4.6	2.7	6.5	5.3	3.9	10.2	11.7
1999/2000	5.2	3.4	6.9	6.0	4.5	11.4	9.9
2000/2001	5.8	3.7	7.8	6.7	5.0	12.9	15.2
2001/2002	5.8	3.4	8.1	6.6	5.1	12.9	7.8

<sup>(1)</sup> Travellers are included in the figures for Minority Ethnic Background.

<sup>(2)</sup> Minority Ethnic Background figures are only available from 1997/1998.

<sup>(3)</sup> Qualification data were missing for 3% of school leavers in 1995/96, as a result, any apparent change in figures between 1994/95 and 1996/97 needs to be seen in that context.

## Indicator 1.5 Proportion of pupils not achieving 5+ GCSEs (A\*-G)



Source: DE (School Leavers Survey)

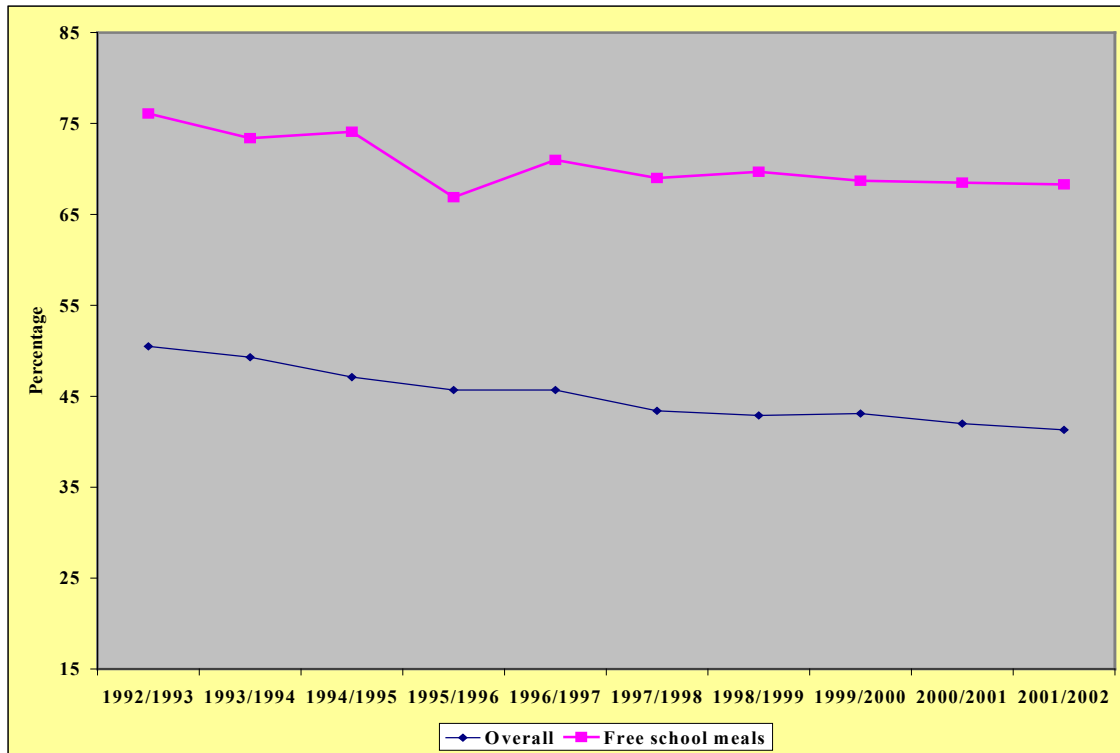
	OVERALL	GENDER		RELIGION		ENTITLED TO FREE SCHOOL MEALS	MINORITY ETHNIC BACKGROUND <sup>(1)</sup> ( <sup>(2)</sup> )
	%	Female	Male	Catholic Managed	Other Managed		
1992/1993	19.8	15.5	24.0	22.4	17.4	39.6	
1993/1994	18.6	13.6	23.3	20.8	16.4	37.5	
1994/1995	16.9	11.9	21.6	19.4	14.5	34.9	
1995/1996 <sup>(3)</sup>	15.3	10.7	19.7	17.6	13.2	29.6	
1996/1997	16.8	12.7	20.7	18.7	15.0	32.9	
1997/1998	15.1	10.8	19.5	16.9	13.5	31.2	29.1
1998/1999	14.5	10.1	18.7	15.6	13.4	30.1	20.6
1999/2000	14.4	10.1	18.6	15.8	13.2	29.7	22.4
2000/2001	14.5	10.0	18.7	15.9	13.1	30.5	20.7
2001/2002	14.6	9.6	19.4	15.7	13.8	31.5	15.0

<sup>(1)</sup> Travellers are included in the figures for Minority Ethnic Background.

<sup>(2)</sup> Minority Ethnic Background figures are only available from 1997/1998.

<sup>(3)</sup> Qualification data were missing for 3% of school leavers in 1995/96, as a result, any apparent change in figures between 1994/95 and 1996/97 needs to be seen in that context.

## Indicator 1.6 Proportion of pupils not achieving 5+ GCSEs (A\*-C)



Source: DE (School Leavers Survey)

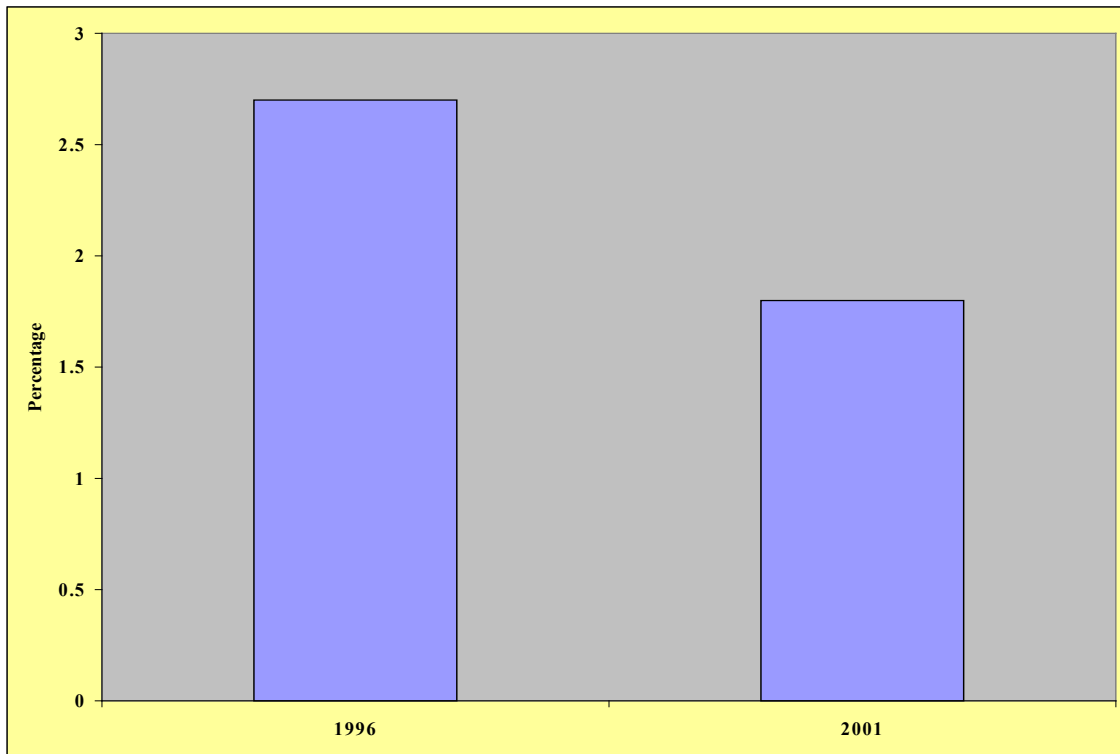
	OVERALL	GENDER		RELIGION		ENTITLED TO FREE SCHOOL MEALS	MINORITY ETHNIC BACKGROUND <sup>(1)</sup> <sup>(2)</sup>
	%	Female	Male	Catholic Managed	Other Managed		
1992/1993	50.5	56.1	56.9	52.8	48.3	76.1	
1993/1994	49.3	42.4	55.9	50.6	48.1	73.4	
1994/1995	47.1	39.7	54.3	49.2	45.1	74.1	
1995/1996 <sup>(3)</sup>	45.7	30.1	53.0	46.5	44.9	66.9	
1996/1997	45.7	39.2	51.9	46.8	44.6	71.0	
1997/1998	43.4	36.0	50.9	44.8	42.2	69.0	49.4
1998/1999	42.9	34.3	51.2	43.2	42.7	69.7	50.5
1999/2000	43.1	35.0	50.8	44.1	42.3	68.7	43.0
2000/2001	42.0	34.2	49.5	42.1	41.9	68.5	37.2
2001/2002	41.3	32.7	49.5	41.3	41.3	68.3	32.7

<sup>(1)</sup> Travellers are included in the figures for Minority Ethnic Background.

<sup>(2)</sup> Minority Ethnic Background figures are only available from 1997/1998.

<sup>(3)</sup> Qualification data were missing for 3% of school leavers in 1995/96, as a result, any apparent change in figures between 1994/95 and 1996/97 needs to be seen in that context.

Indicator 1.7 The proportion of households with at least one child that live in homes that are unfit

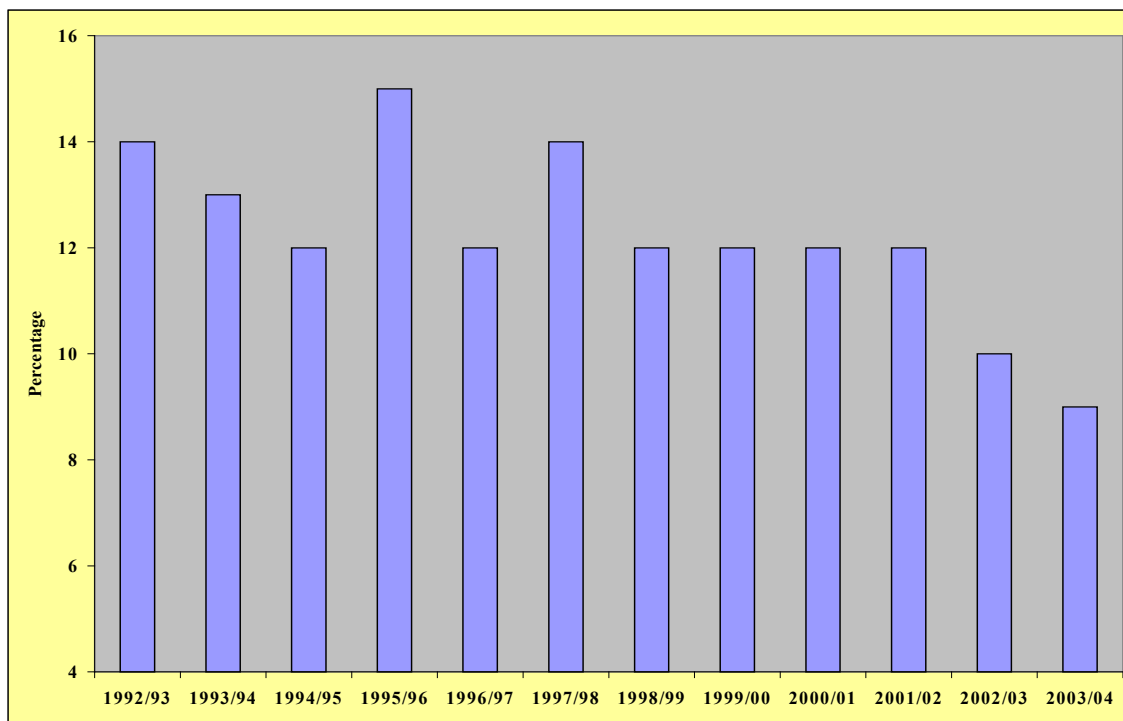


Source: NIHE (House Condition Survey)

Notes:

1. The House Condition Survey is conducted every 5 years.
2. There are no equivalent figures for 1991.

## Indicator 1.8 The proportion of children living in homes that are below bedroom standard



Source: Continuous Household Survey, NISRA

Age Band	92/93	93/94	94/95	95/96	96/97	97/98	98/99	99/00	00/01	01/02	02/03	03/04
0-5	11%	10%	9%	11%	7%	11%	10%	9%	10%	8%	9%	7%
6-10	14%	12%	13%	17%	12%	12%	11%	12%	11%	11%	11%	10%
11-15	18%	17%	15%	18%	16%	17%	16%	15%	13%	16%	10%	9%
<b>All aged 0-15</b>	<b>14%</b>	<b>13%</b>	<b>12%</b>	<b>15%</b>	<b>12%</b>	<b>14%</b>	<b>12%</b>	<b>12%</b>	<b>12%</b>	<b>12%</b>	<b>10%</b>	<b>9%</b>

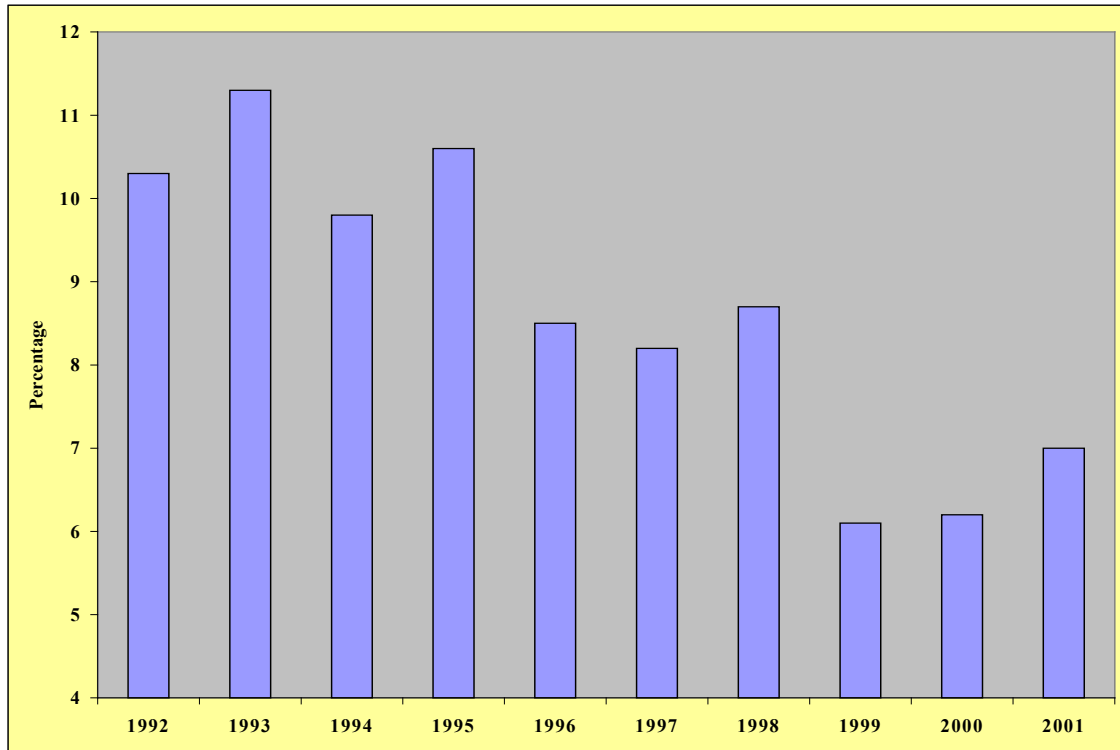
Notes:

1. Children are defined as aged under 16.
2. The bedroom standard is used to estimate occupation density by allocating a standard number of bedrooms to each household in accordance with its age/sex/marital status composition and the relationship of the members to one another. A separate bedroom is allocated to each married or cohabiting couple, any other person aged 21 or over, each pair of adolescents aged 10–20 of the same sex, and each pair of children under 10. Any unpaired person aged 10–20 is paired if possible with a child under 10 of the same sex, or, if that is not possible, is

given a separate bedroom, as is any unpaired child under 10. This standard is then compared with the actual number of bedrooms (including bed sitters) available for the sole use of the household, and deficiencies or excesses are tabulated. Bedrooms converted to other uses are not counted as available unless they have been denoted as bedrooms by the respondents; bedrooms not actually in use are counted unless uninhabitable.

# **YOUNG ADULTS**

## Indicator 2.1 Proportion of persons aged 16-24 who are ILO unemployed



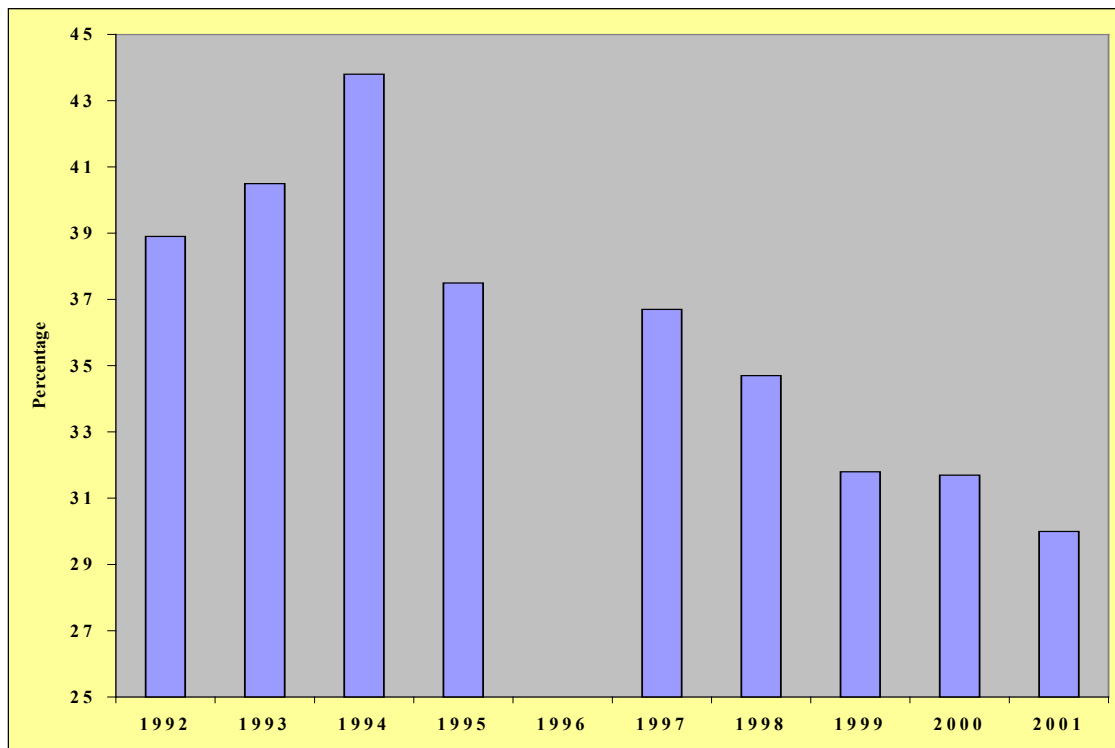
Source: DETI (Labour Force Survey)

1992	1993	1994	1995	1996	1997	1998	1999	2000	2001
%	%	%	%	%	%	%	%	%	%
10.3	11.3	9.8	10.6	8.5	8.2	8.7	6.1	6.2	7.0

Notes:

1. ILO (International Labour Organisation) unemployed are persons without a job who were available to start work in the next two weeks and had either looked for work in the past four weeks or were waiting to start a job they had already obtained.
2. Data is annual between 1992 and 2001. Annual figures are not yet available for 2002 and 2003.

Indicator 2.2 Proportion of young adults aged 16-24 who do not have a basic education (below NVQ level 2 or equivalent)



Source: Labour Force Survey, DETI

	1992	1993	1994	1995	1996	1997	1998	1999	2000	2001
	%	%	%	%	%	%	%	%	%	%
Males	40.9	42.3	45.4	36.9	NA	41.2	38.8	31.8	35.1	33.6
Females	36.9	38.7	42.2	38.1	NA	31.9	30.5	31.8	28.3	26.3
Catholic				39.3	NA	36.9	35.0	33.3	32.0	28.6
Protestant				36.7	NA	37.1	34.9	28.9	31.3	32.2
With disability							52.4	40.5	44.5	*
Without disability							33.1	31.1	30.7	29.3
<b>All aged 16-24</b>	<b>38.9</b>	<b>40.5</b>	<b>43.8</b>	<b>37.5</b>	<b>NA</b>	<b>36.7</b>	<b>34.7</b>	<b>31.8</b>	<b>31.7</b>	<b>30.0</b>

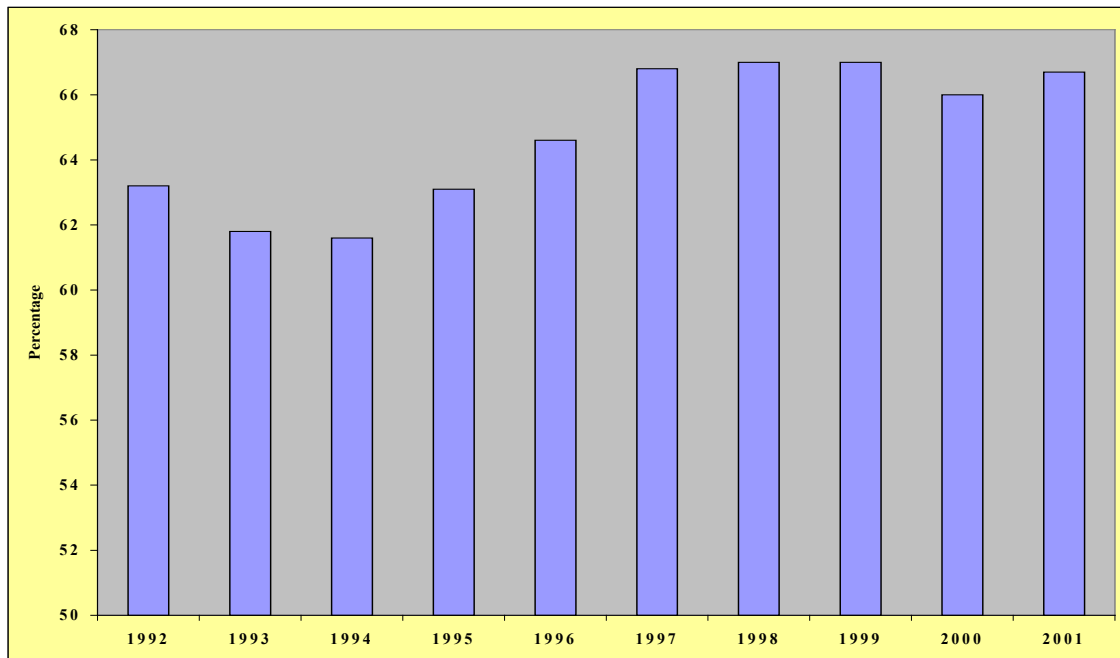
\* Below minimum quotation level of 6,000 for annual datasets.

Notes:

1. Full qualification levels are not available for all persons in 1996.

# ADULTS

### Indicator 3.1 Proportion of working age persons in employment



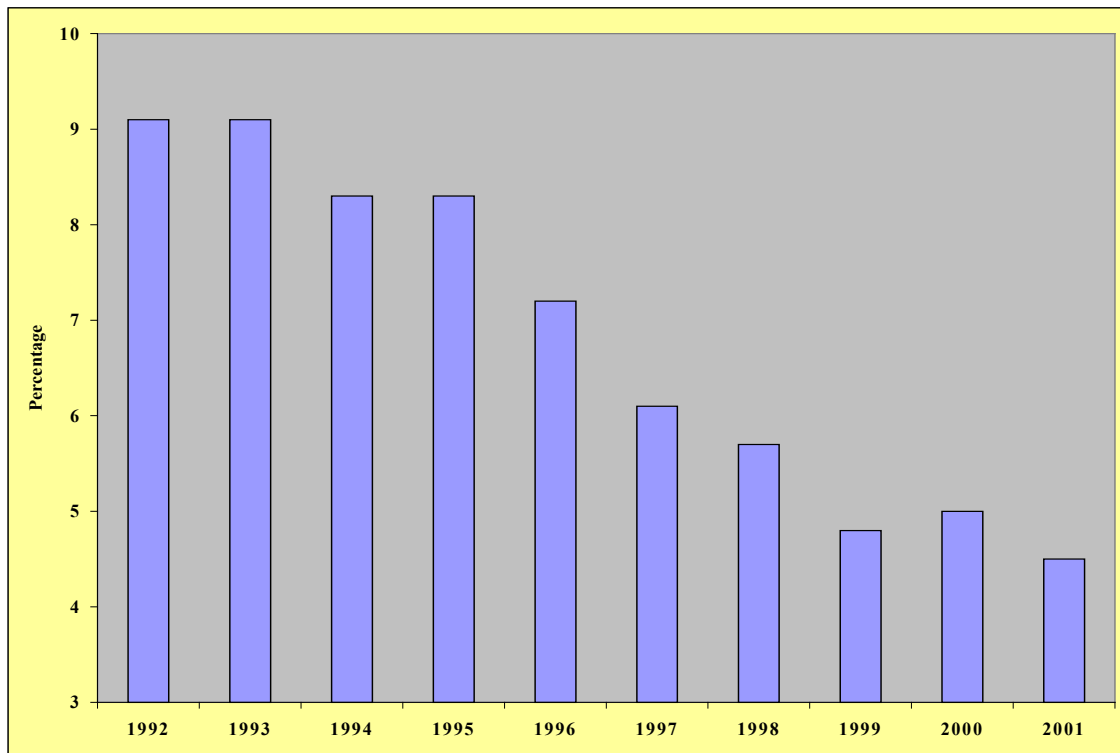
Source: Labour Force Survey, DETI

	1992	1993	1994	1995	1996	1997	1998	1999	2000	2001
	%	%	%	%	%	%	%	%	%	%
Males	69.1	69.1	67.1	68.7	70.3	72.8	73.0	73.1	73.1	72.9
Females	56.9	54.2	55.7	57.2	58.7	60.4	60.7	60.6	58.5	60.1
Catholic				55.0	56.8	60.2	61.8	61.7	60.6	61.2
Protestant				69.2	70.1	71.6	71.0	71.0	70.7	71.2
With disability							29.2	29.7	32.6	33.0
Without disability							75.8	75.5	73.9	74.9
Aged 16 – 24	53.6	49.9	47.5	52.6	55.6	57.9	56.7	55.5	53.2	54.2
Aged 25 – 34	69.1	68.9	71.1	70.4	73.0	76.3	75.5	76.1	75.3	76.1
Aged 35 – 44	69.2	70.0	68.3	71.3	70.4	72.5	74.0	73.1	74.5	74.6
Aged 45 – 54	68.4	64.0	65.6	65.4	66.8	68.6	69.5	71.5	69.2	69.8
Aged 55 – 64	51.0	51.6	48.5	47.4	48.0	46.5	48.9	48.3	47.4	48.2
Married	67.9	66.8	66.6	67.6	67.9	69.9	71.4	70.8	69.8	71.7
Single	55.4	53.3	52.8	56.3	59.6	61.9	60.9	61.9	61.0	60.0
<b>All of working age</b>	<b>63.2</b>	<b>61.8</b>	<b>61.6</b>	<b>63.1</b>	<b>64.6</b>	<b>66.8</b>	<b>67.0</b>	<b>67.0</b>	<b>66.0</b>	<b>66.7</b>

Note:

1. Working age persons comprise males aged 16-64 and females aged 16-59.

### Indicator 3.2 Proportion of working age persons who are unemployed

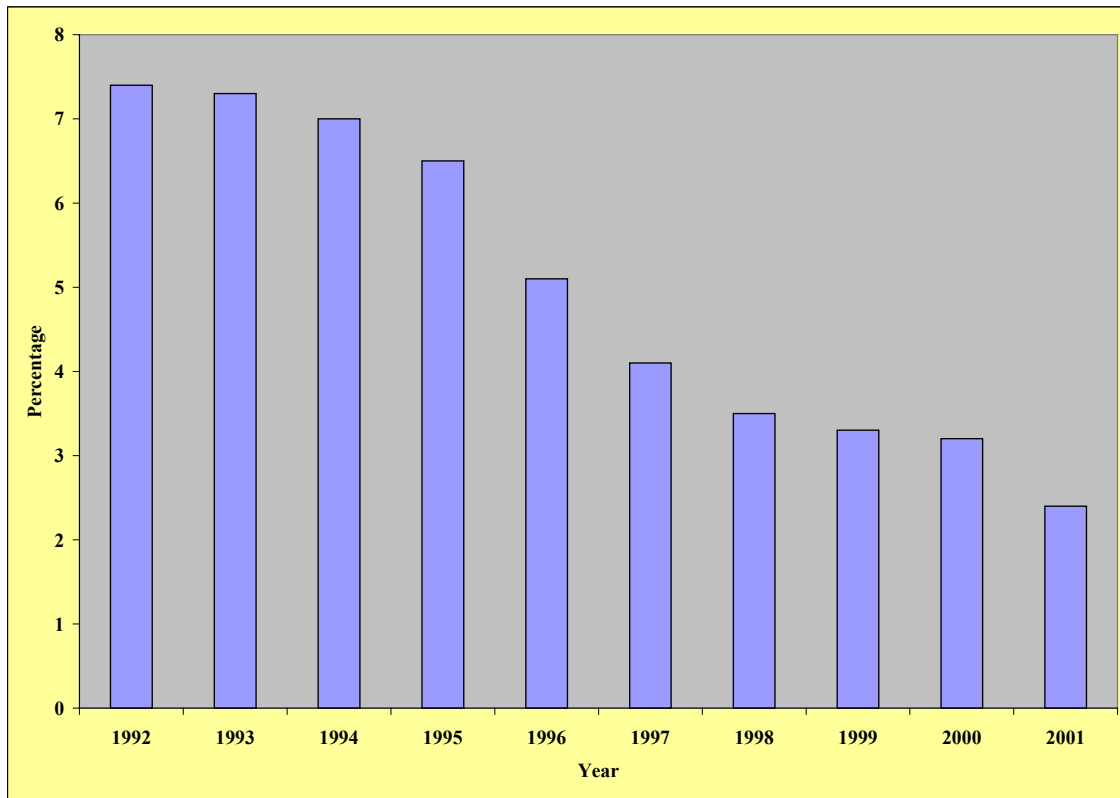


Source: Labour Force Survey, DETI

	1992	1993	1994	1995	1996	1997	1998	1999	2000	2001
	%	%	%	%	%	%	%	%	%	%
Males	12.7	12.9	12.4	11.8	9.9	8.2	7.0	5.8	6.1	5.7
Females	5.3	5.1	4.0	4.7	4.4	3.9	4.3	3.7	3.8	3.2
Catholic				10.7	8.6	8.5	7.2	6.1	6.0	5.6
Protestant				6.4	6.1	4.1	4.1	3.9	4.1	3.3
With disability							6.0	5.3	5.5	4.2
Without disability							5.6	4.6	4.9	4.6
Aged 16 – 24	10.3	11.3	9.8	10.6	8.5	8.2	8.7	6.1	6.2	7.0
Aged 25 – 34	11.4	10.9	9.8	9.8	8.6	6.1	5.9	6.0	6.0	5.2
Aged 35 – 44	9.2	8.4	8.7	7.9	6.9	6.0	4.9	4.4	4.5	3.4
Aged 45 – 54	6.5	6.8	6.3	6.2	6.0	4.9	4.4	3.6	4.7	*
Aged 55 – 64	*	*	*	*	*	*	*	*	*	*
Married	7.6	7.5	6.6	6.1	6.0	4.5	3.5	3.2	3.9	2.8
Single	11.6	11.7	11.3	11.8	9.0	8.6	8.7	6.9	6.5	6.8
<b>All of working age</b>	<b>9.1</b>	<b>9.1</b>	<b>8.3</b>	<b>8.3</b>	<b>7.2</b>	<b>6.1</b>	<b>5.7</b>	<b>4.8</b>	<b>5.0</b>	<b>4.5</b>

\* Below minimum quotation level of 6,000 for annual datasets.

### Indicator 3.3 Proportion of working age economically active persons long-term unemployed



Source: Labour Force Survey, DETI

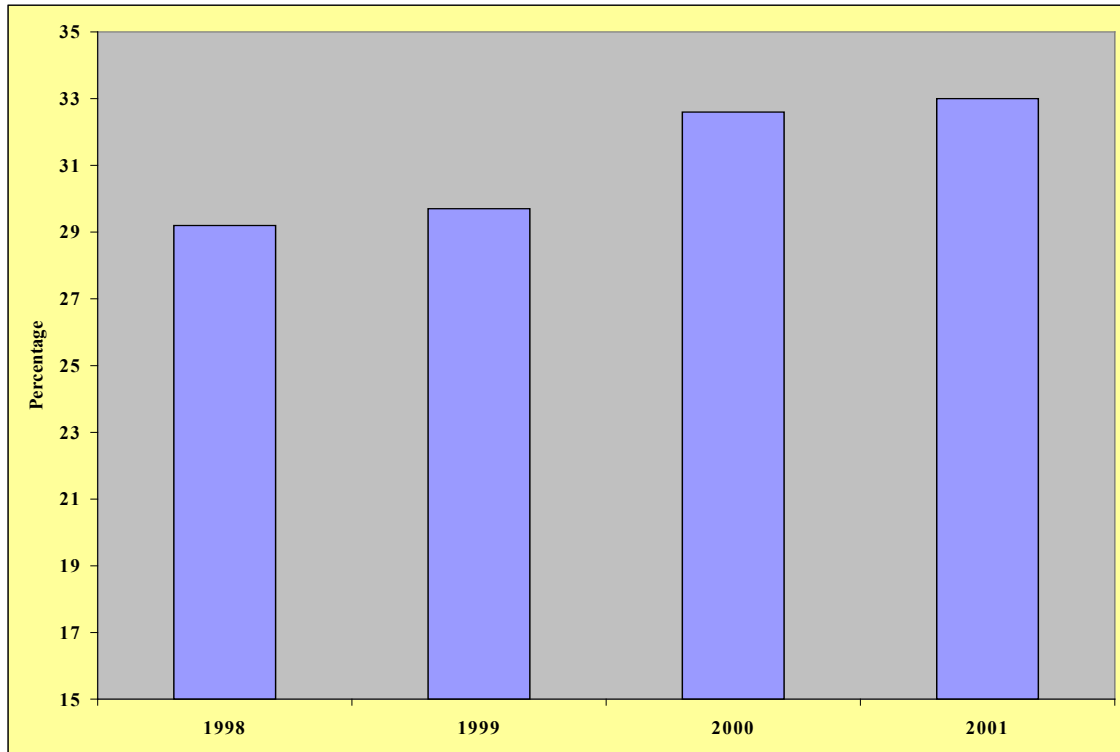
Proportion of economically active persons long-term unemployed (%)										
	1992	1993	1994	1995	1996	1997	1998	1999	2000	2001
Catholic				9.5	7.3	6.6	5.2	4.9	3.9	3.4
Protestant				4.4	3.7	2.3	2.0	2.3	2.7	1.7
<b>All of working age</b>	<b>7.4</b>	<b>7.3</b>	<b>7.0</b>	<b>6.5</b>	<b>5.1</b>	<b>4.1</b>	<b>3.5</b>	<b>3.3</b>	<b>3.2</b>	<b>2.4</b>

\* Below minimum quotation level of 6,000 for annual datasets.

Note:

1. Long-termed unemployed are persons unemployed for one year or more.

### Indicator 3.4 Proportion of disabled persons of working age in employment



Source: Labour Force Survey, DETI

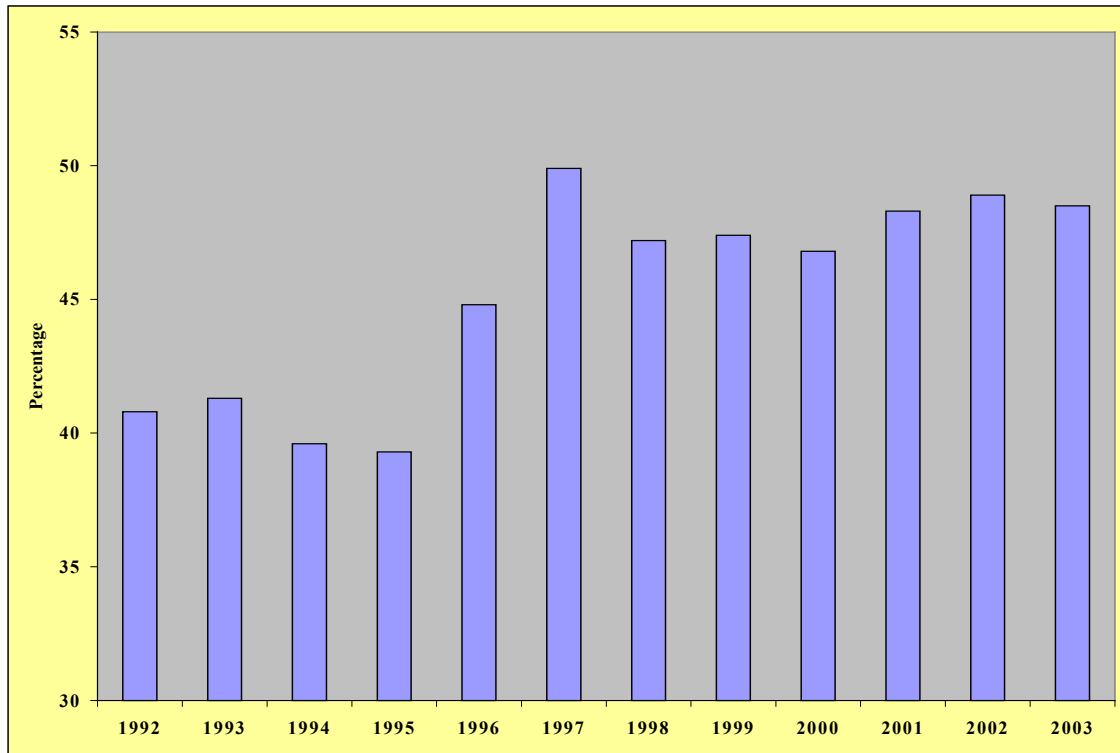
	1998 %	1999 %	2000 %	2001 %
Males	31.9	31.3	35.3	35.8
Females	26.2	28.0	29.5	29.6
Catholic	22.7	25.4	28.4	25.4
Protestant	33.9	33.7	34.6	39.7
Aged 16-24	46.2	42.3	43.5	*
Aged 25-34	33.2	32.8	34.3	42.2
Aged 35-44	31.2	34.9	37.6	38.1
Aged 45-54	31.0	30.1	37.8	35.4
Aged 55-64	17.4	19.6	21.0	19.6
Married	28.3	31.5	34.6	34.8
Single	30.8	26.4	28.7	30.1
<b>All people with a disability of working age</b>	<b>29.2</b>	<b>29.7</b>	<b>32.6</b>	<b>33.0</b>

\* Below minimum quotation level of 6,000 cases.

Note:

1. Under the Disability Discrimination Act (DDA), a person has a disability if he or she has a physical or mental impairment which has a substantial and long-term adverse effect on a person's ability to carry out normal day-to-day activities.

### Indicator 3.5 Proportion of lone parents of working age in employment



Source: Labour Force Survey, DETI

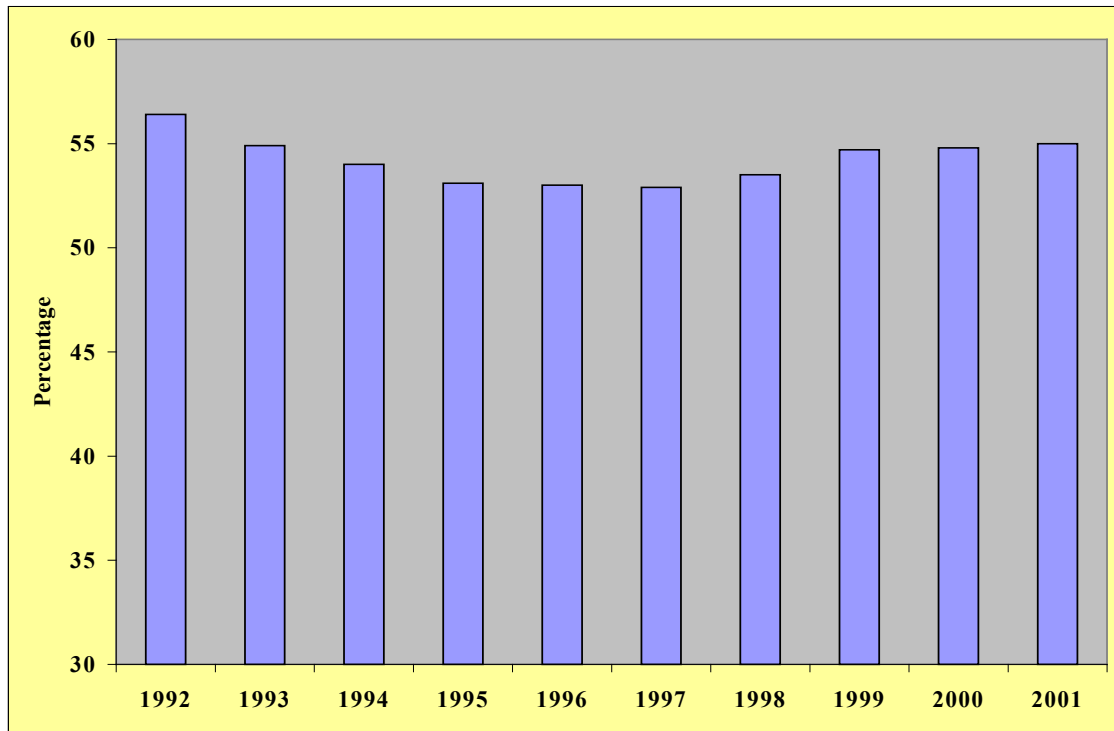
	1992	1993	1994	1995	1996	1997	1998	1999	2000	2001	2002	2003
	%	%	%	%	%	%	%	%	%	%	%	%
Catholic				38.1	39.7	*	46.1	42.9	40.5	34.8	37.2	45.3
Protestant				39.7	48.0	59.4	48.4	51.9	52.3	58.7	57.1	52.9
All lone parents of working age	40.8	41.3	39.6	39.3	44.8	49.9	47.2	47.4	46.8	48.3	48.9	48.5

\* Below minimum quotation level of 8,000 cases.

Note:

1. Data is for spring of each year.

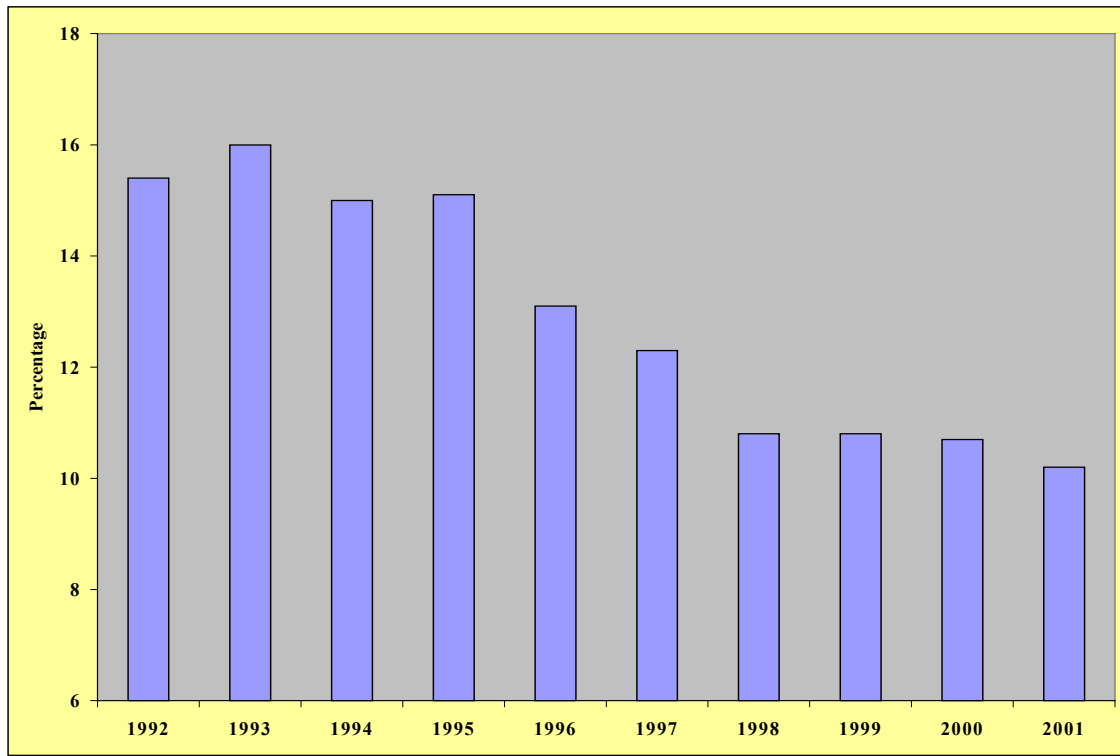
### Indicator 3.6 Proportion of persons aged over 50 in employment



Source: Labour Force Survey, DETI

	1992	1993	1994	1995	1996	1997	1998	1999	2000	2001
	%	%	%	%	%	%	%	%	%	%
Males	61.4	59.8	59.2	58.4	57.9	57.3	57.7	59.5	58.9	59.0
Females	49.3	48.2	46.5	45.7	46.4	46.8	47.9	48.2	49.1	49.5
Catholic				47.2	41.7	46.3	49.2	47.6	46.6	44.3
Protestant				56.1	58.6	56.7	56.7	59.2	58.7	59.1
With disability							20.7	20.9	24.8	25.5
Without disability							76.2	76.2	75.3	75.2
Married	59.4	56.1	56.0	55.5	54.9	54.6	55.9	56.0	57.0	57.7
Single	44.0	49.6	44.6	42.4	43.6	45.4	43.9	48.9	44.7	43.3
<b>All aged over 50</b>	<b>56.4</b>	<b>54.9</b>	<b>54.0</b>	<b>53.1</b>	<b>53.0</b>	<b>52.9</b>	<b>53.5</b>	<b>54.7</b>	<b>54.8</b>	<b>55.0</b>

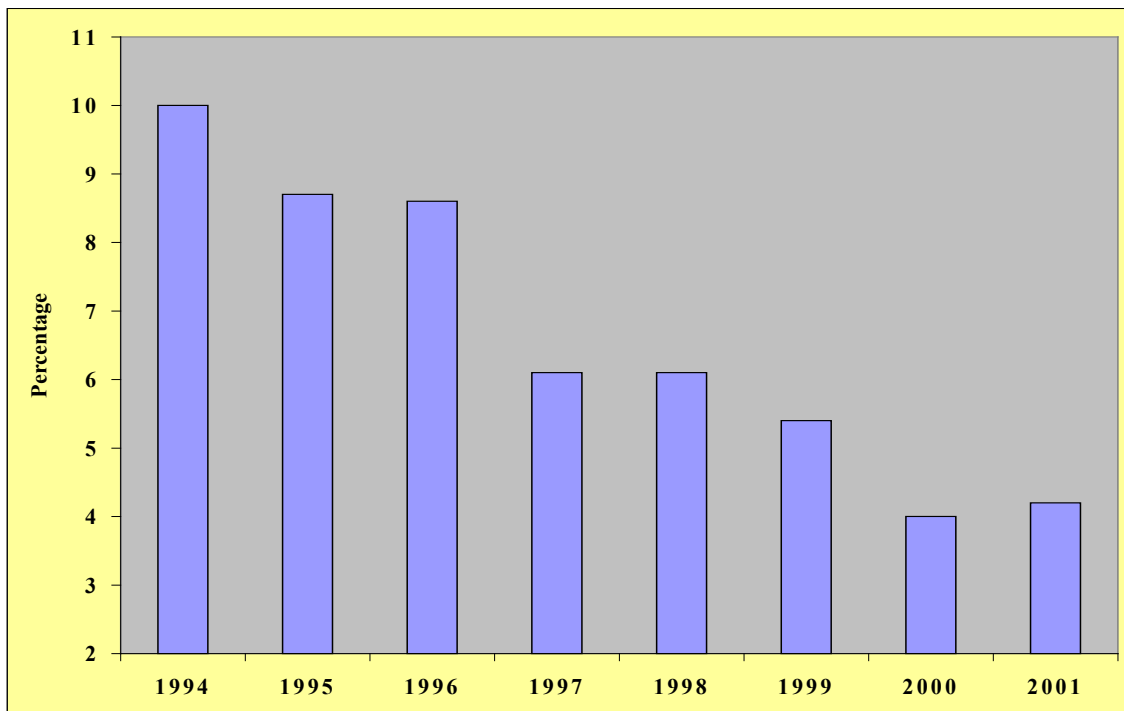
Indicator 3.7 Proportion of persons of working age not in employment who would like a job



Source: Labour Force Survey, DETI

	1992	1993	1994	1995	1996	1997	1998	1999	2000	2001
	%	%	%	%	%	%	%	%	%	%
Catholic				18.7	16.2	15.6	13.2	12.9	13.3	13.0
Protestant				12.3	11.0	9.4	8.6	9.3	8.6	7.8
With disability							16.2	19.3	18.8	19.0
Without disability							9.6	8.9	8.7	8.1
Aged 16 – 24	17.2	18.0	16.3	17.5	15.6	14.0	14.3	11.5	10.4	10.0
Aged 25 – 34	17.4	17.9	16.3	17.0	14.2	12.4	11.5	11.8	12.0	9.9
Aged 35 – 44	15.5	15.1	15.9	15.9	13.6	12.4	10.5	11.3	11.1	11.3
Aged 45 – 54	13.7	14.3	12.7	11.2	10.6	11.1	8.4	9.0	10.3	9.7
Aged 55 – 64	9.0	12.1	11.0	10.7	9.1	10.6	7.8	9.8	7.9	10.0
Married	13.6	14.3	13.4	12.6	11.7	10.7	8.5	9.2	10.1	9.1
Single	18.3	19.1	17.7	18.8	15.3	14.7	14.2	13.1	11.5	11.7
<b>All of working age</b>	<b>15.4</b>	<b>16.0</b>	<b>15.0</b>	<b>15.1</b>	<b>13.1</b>	<b>12.3</b>	<b>10.8</b>	<b>10.8</b>	<b>10.7</b>	<b>10.2</b>

Indicator 3.8 Proportion of workless households where the head of household is long-term unemployed.



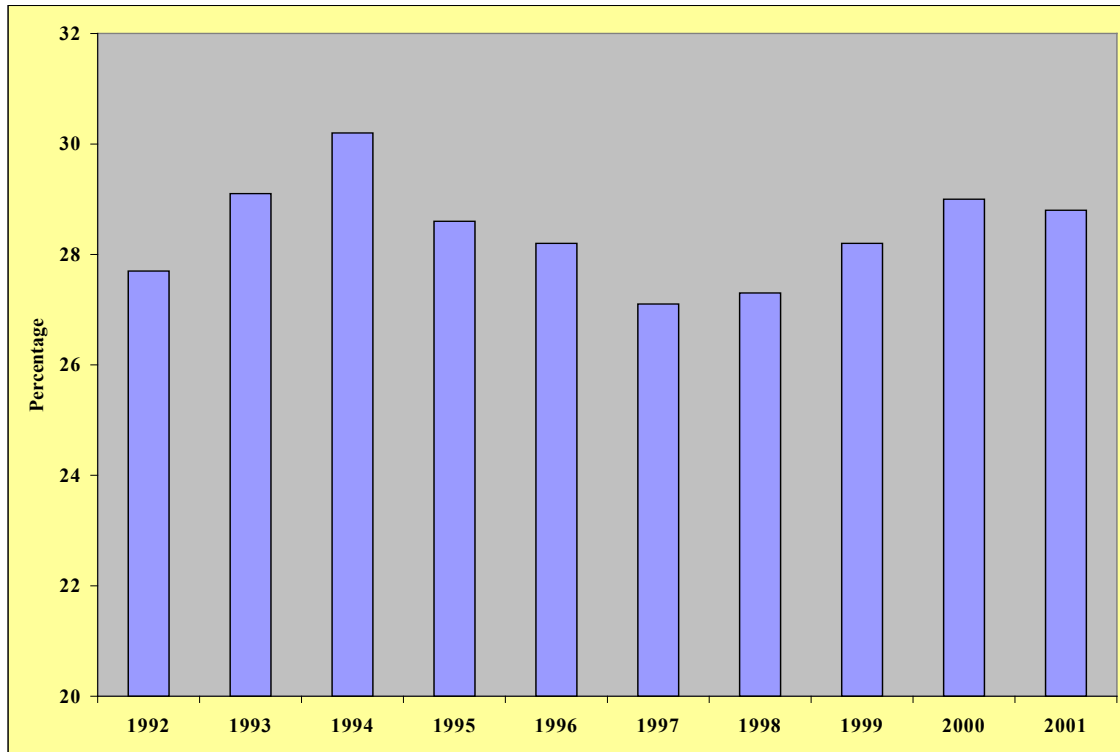
Source: Labour Force Survey, DETI

	1994	1995	1996	1997	1998	1999	2000	2001
	%	%	%	%	%	%	%	%
<b>All households</b>	<b>10.0</b>	<b>8.7</b>	<b>8.6</b>	<b>6.1</b>	<b>6.1</b>	<b>5.4</b>	<b>4.0</b>	<b>4.2</b>

Notes:

1. Data is from spring of each year.
2. Long-term unemployed are persons unemployed for one year or more.

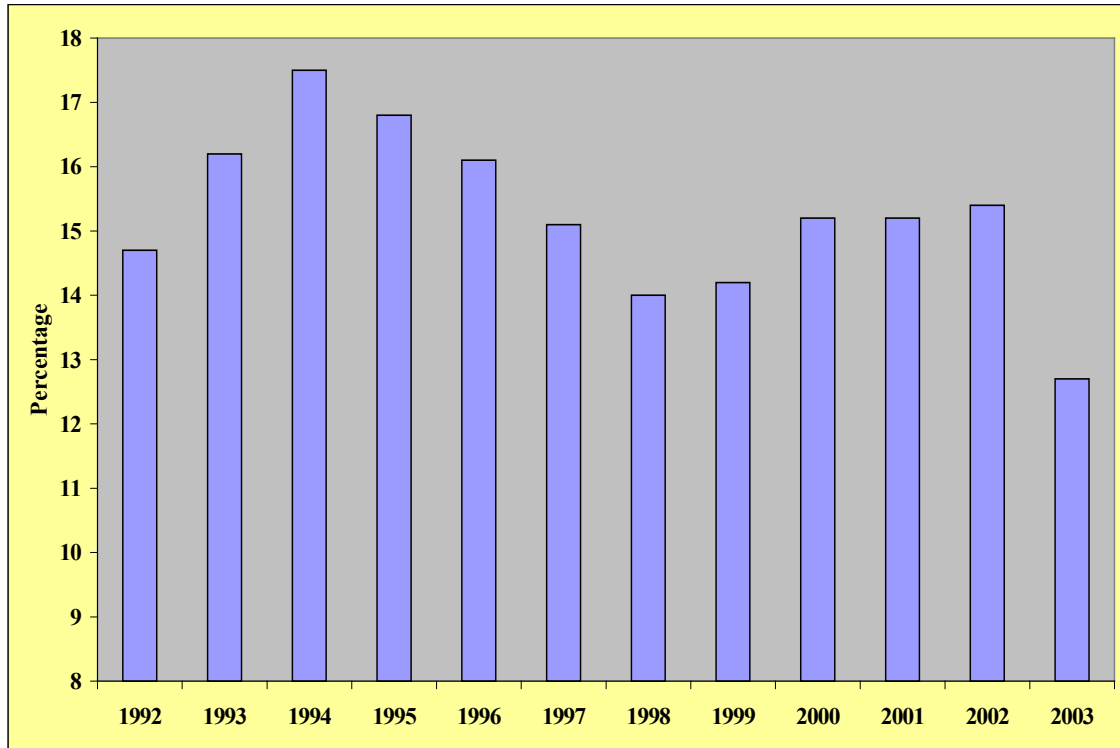
### Indicator 3.9 Working age economic inactivity rates



Source: Labour Force Survey, DETI

	1992	1993	1994	1995	1996	1997	1998	1999	2000	2001
	%	%	%	%	%	%	%	%	%	%
Males	18.2	18.0	20.5	19.5	19.8	19.0	20.0	21.1	20.8	21.4
Females	37.8	40.8	40.3	38.1	36.9	35.7	35.0	35.7	37.7	36.8
Catholic				34.3	34.6	31.3	30.9	32.2	33.4	33.2
Protestant				24.4	23.8	24.3	24.9	25.1	25.2	25.5
With disability							64.8	65.0	61.9	62.8
Without disability							18.6	19.8	21.2	20.6
Aged 16 – 24	36.1	38.8	42.7	36.8	35.9	33.9	34.6	38.4	40.6	38.8
Aged 25 – 34	19.5	20.2	19.2	19.9	18.4	17.6	18.6	17.9	18.7	18.7
Aged 35 – 44	21.6	21.6	23.0	20.8	22.8	21.6	21.2	22.5	21.0	22.0
Aged 45 – 54	25.1	29.3	28.2	28.4	27.2	26.5	26.1	24.9	26.0	26.9
Aged 55 – 64	43.7	43.1	47.2	47.6	47.8	48.9	47.5	49.4	50.5	48.8
Married	24.4	25.7	26.9	26.3	26.1	25.6	25.1	26.0	26.3	25.6
Single	33.1	35.0	35.9	31.9	31.3	29.5	30.4	31.2	32.6	33.2
<b>All of working age</b>	<b>27.7</b>	<b>29.1</b>	<b>30.2</b>	<b>28.6</b>	<b>28.2</b>	<b>27.1</b>	<b>27.3</b>	<b>28.2</b>	<b>29.0</b>	<b>28.8</b>

### Indicator 3.10 Proportion of working age persons in workless households



Source: Labour Force Survey, DETI

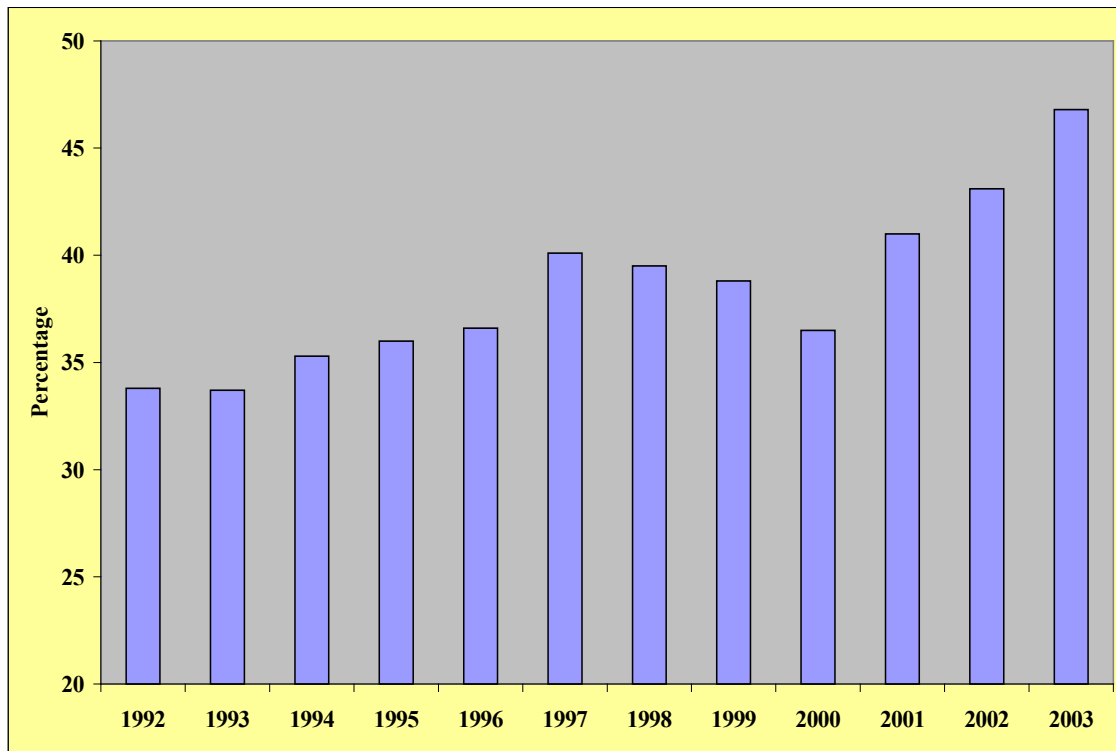
	1992 %	1993 %	1994 %	1995 %	1996 %	1997 %	1998 %	1999 %	2000 %	2001 %	2002 %	2003 %
Males	14.3	15.8	16.4	16.4	15.3	14.8	13.2	13.7	14.5	14.0	15.2	11.4
Females	15.0	16.5	18.6	17.2	16.7	15.3	14.9	14.7	15.9	16.4	15.5	14.1
Catholic				20.6	21.2	19.8	16.8	16.6	17.2	18.7	19.8	15.7
Protestant				14.3	12.6	12.1	12.1	12.6	13.0	12.0	12.2	10.5
With disability							39.7	37.3	36.5	38.9	41.1	36.8
Without disability							13.2	9.0	9.9	9.2	9.1	7.0
Aged 16 – 24	11.9	14.0	18.2	15.6	12.9	14.4	9.8	10.4	13.5	13.1	15.8	11.4
Aged 25 – 34	15.4	15.7	15.9	17.8	13.9	11.2	10.3	13.1	13.7	14.0	10.9	9.7
Aged 35 – 44	13.6	14.7	15.8	12.9	13.3	13.6	13.7	12.0	12.4	10.5	14.0	11.0
Aged 45 – 54	12.4	16.0	14.8	14.1	15.4	13.8	14.1	12.2	11.8	13.1	13.8	12.4
Aged 55 – 64	24.6	23.5	27.6	27.3	31.2	28.7	29.0	30.0	31.1	31.7	27.7	24.3

Married	12.7	13.5	14.8	13.2	14.9	12.6	11.7	12.2	12.9	11.9	11.6	8.7
Single	17.6	20.2	21.7	22.1	17.6	19.3	17.4	16.9	18.1	19.7	20.4	18.3
<b>All of working age</b>	<b>14.7</b>	<b>16.2</b>	<b>17.5</b>	<b>16.8</b>	<b>16.1</b>	<b>15.1</b>	<b>14.0</b>	<b>14.2</b>	<b>15.2</b>	<b>15.2</b>	<b>15.4</b>	<b>12.7</b>

Notes:

1. Data is for spring of each year.
2. A workless household is a household where no one is in employment.

### Indicator 3.11 The proportion of working age adults living in work-rich households



Source: Labour Force Survey, DETI

	1992	1993	1994	1995	1996	1997	1998	1999	2000	2001	2002	2003
	%	%	%	%	%	%	%	%	%	%	%	%
Males	33.2	33.5	34.8	35.7	36.3	39.2	38.6	38.0	36.0	40.8	42.8	46.4
Females	34.2	33.8	35.8	36.1	37.5	41.2	40.6	39.6	37.2	41.2	43.5	47.3
Catholic				26.2	28.8	31.1	30.7	30.9	29.0	34.6	35.6	37.9
Protestant				42.7	42.4	46.5	45.6	43.7	41.6	45.7	48.1	53.3
With disability							16.6	17.6	17.8	18.2	20.1	24.7
Without disability							45.4	43.9	41.4	47.0	49.2	52.5
Aged 16 – 24	22.4	20.5	19.3	23.9	23.2	25.4	26.1	23.5	21.7	24.7	27.5	35.0
Aged 25 – 34	46.0	46.9	51.1	50.2	50.7	57.8	53.8	53.3	53.7	54.0	63.2	61.1
Aged 35 – 44	40.0	42.3	42.3	42.9	46.1	45.6	46.8	45.0	42.2	55.6	49.7	53.3
Aged 45 – 54	30.9	28.1	32.7	32.4	33.0	36.8	36.8	36.9	36.1	36.9	40.4	45.7
Aged 55 – 64	22.3	23.2	23.8	23.0	22.3	24.9	24.0	28.8	24.7	25.2	24.6	31.1

---

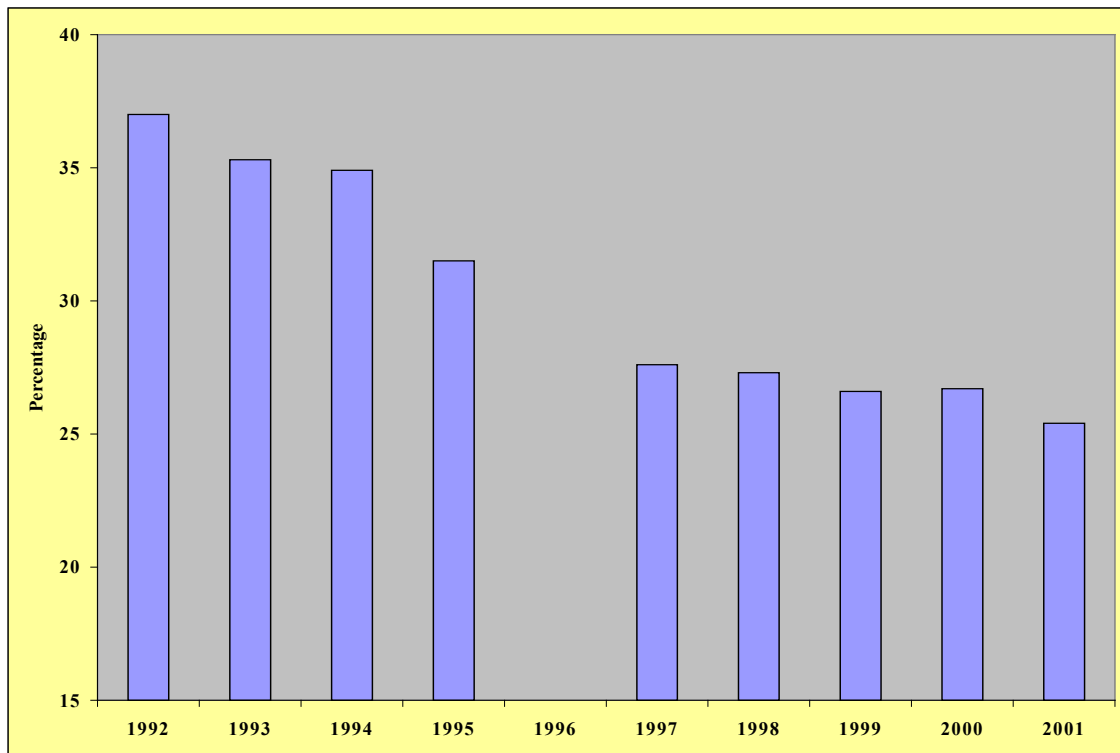
Married	40.5	40.0	42.2	42.0	42.7	45.9	44.7	45.7	41.6	47.3	47.6	51.7
Single	23.4	23.6	24.5	26.8	27.8	30.2	31.7	29.4	29.8	32.0	37.0	40.1
<b>All of working age</b>	<b>33.8</b>	<b>33.7</b>	<b>35.3</b>	<b>36.0</b>	<b>36.6</b>	<b>40.1</b>	<b>39.5</b>	<b>38.8</b>	<b>36.5</b>	<b>41.0</b>	<b>43.1</b>	<b>46.8</b>

---

Note:

1. A work-rich household is a household where everyone is in employment.
2. Data is for spring of each year.

### Indicator 3.12 Proportion of persons of working age without a qualification



Source: Labour Force Survey, DETI

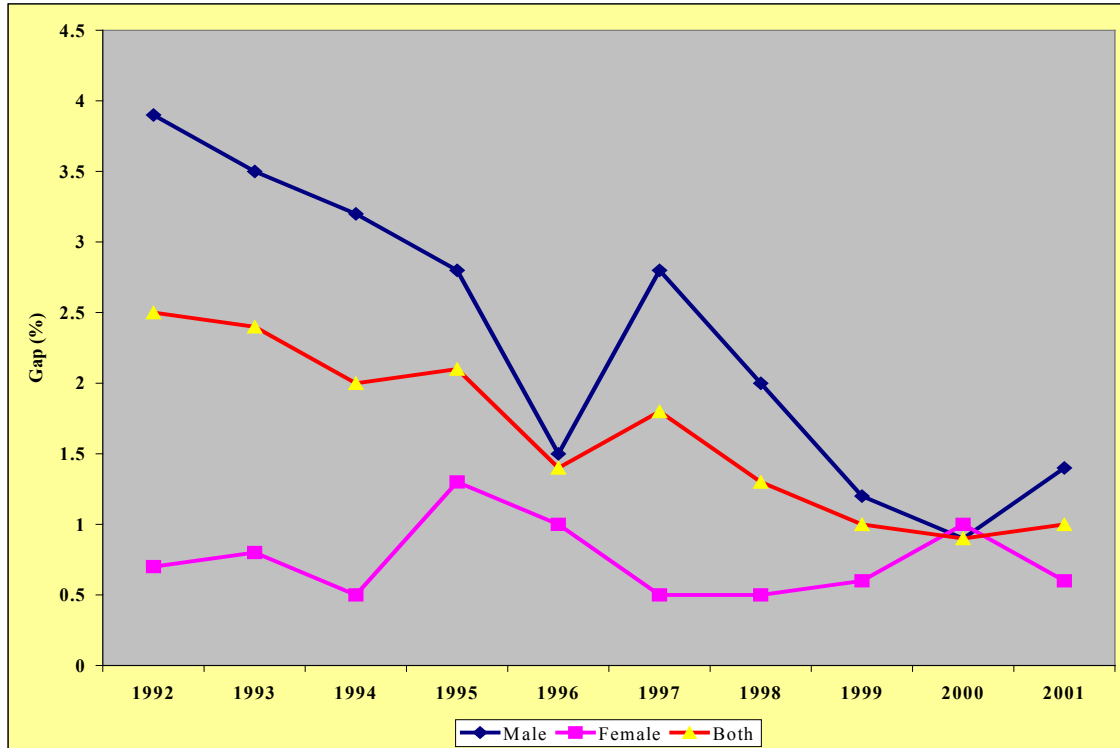
	1992	1993	1994	1995	1996	1997	1998	1999	2000	2001
	%	%	%	%	%	%	%	%	%	%
Males	35.6	33.0	33.9	29.4	NA	26.3	26.6	26.5	26.4	24.7
Females	38.6	37.8	35.9	33.8	NA	28.9	28.0	26.6	27.1	26.1
Catholic				34.0	NA	29.2	29.8	30.1	28.5	27.8
Protestant				31.1	NA	27.3	26.6	24.4	26.3	24.2
With disability							49.3	48.1	46.4	45.1
Without disability							22.1	21.7	22.1	20.5
Aged 16 – 24	26.6	24.6	25.9	19.4	NA	16.8	18.6	17.0	17.4	16.6
Aged 25 – 34	28.1	24.8	26.5	24.4	NA	16.3	16.5	17.9	18.7	15.9
Aged 35 – 44	38.3	35.2	33.7	29.3	NA	28.7	27.2	25.9	24.6	23.1
Aged 45 – 54	51.1	51.2	49.5	45.9	NA	39.3	38.7	36.1	35.9	35.3
Aged 55 – 64	55.5	56.8	50.8	52.9	NA	50.1	48.5	48.4	49.4	47.8
Married	39.0	37.1	36.2	33.2	NA	29.6	28.4	27.6	28.7	27.1
Single	33.7	32.3	32.7	29.0	NA	24.3	25.6	25.2	24.1	23.1
<b>All of working age</b>	<b>37.0</b>	<b>35.3</b>	<b>34.9</b>	<b>31.5</b>	<b>NA</b>	<b>27.6</b>	<b>27.3</b>	<b>26.6</b>	<b>26.7</b>	<b>25.4</b>

Note:

1. Data not available for 1996.

## Indicator 3.13a Labour Force Community Differential Measures

### Catholic employment gap



Source: 2001 Labour Force Survey Religion Report, NISRA

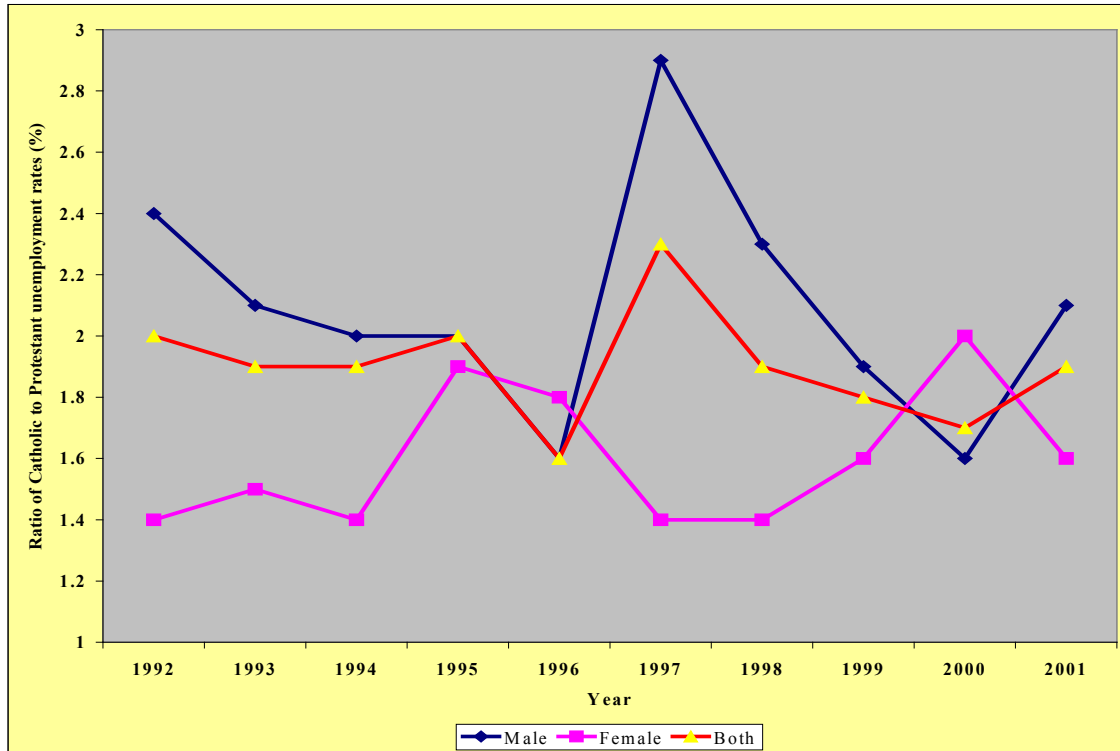
	1992	1993	1994	1995	1996	1997	1998	1999	2000	2001
Male	3.9	3.5	3.2	2.8	1.5	2.8	2.0	1.2	0.9	1.4
Female	0.7	0.8	0.5	1.3	1.0	0.5	0.5	0.6	1.0	0.6
Both	2.5	2.4	2.0	2.1	1.4	1.8	1.3	1.0	0.9	1.0

Note:

1. The Catholic “employment gap” measures the difference between the representation of the Catholic community in the economically active population and its representation among those in employment.

## Indicator 3.13b Unemployment differential

### Ratio of Catholic to Protestant unemployment rates



Source: 2001 Labour Force Survey Religion Report, NISRA

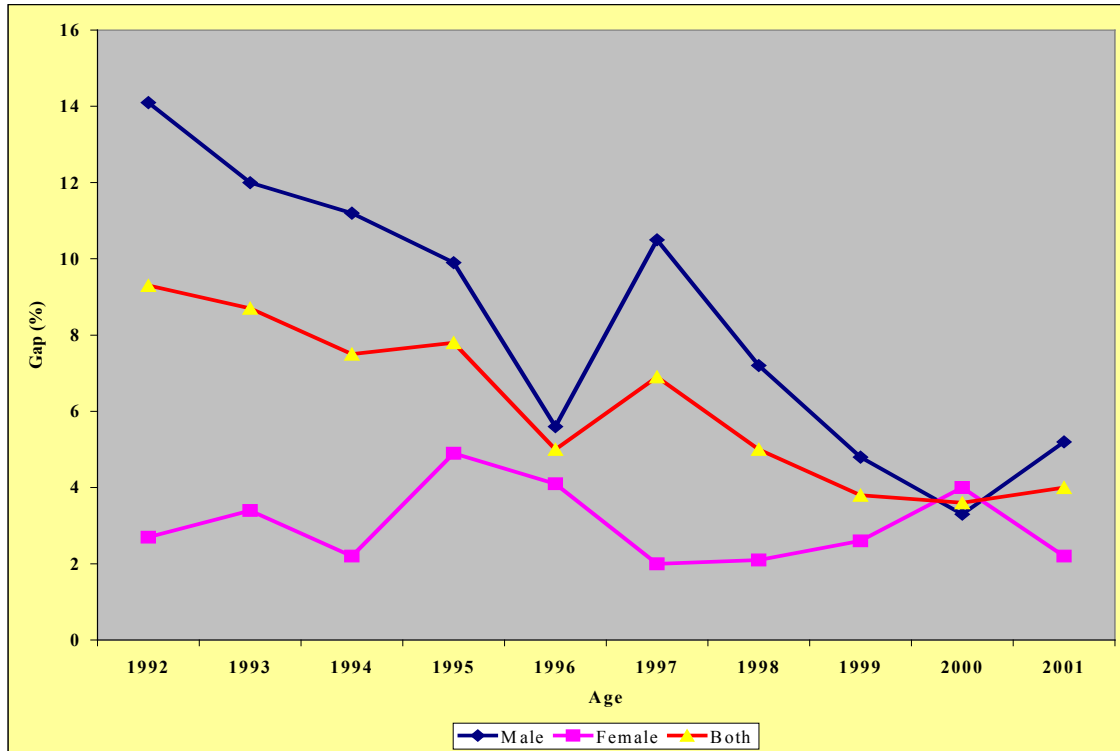
	1992	1993	1994	1995	1996	1997	1998	1999	2000	2001
Male	2.4	2.1	2.0	2.0	1.6	2.9	2.3	1.9	2.0	2.1
Female	1.4	1.5	1.4	1.9	1.8	1.4	1.4	1.6	1.6	1.6
Both	2.0	1.9	1.9	2.0	1.6	2.3	1.9	1.8	1.7	1.9

Note:

1. The ratio of unemployment rates is the ratio of the highest to lowest unemployment rate.

## Indicator 3.13c Unemployment differential

### Unemployment gap



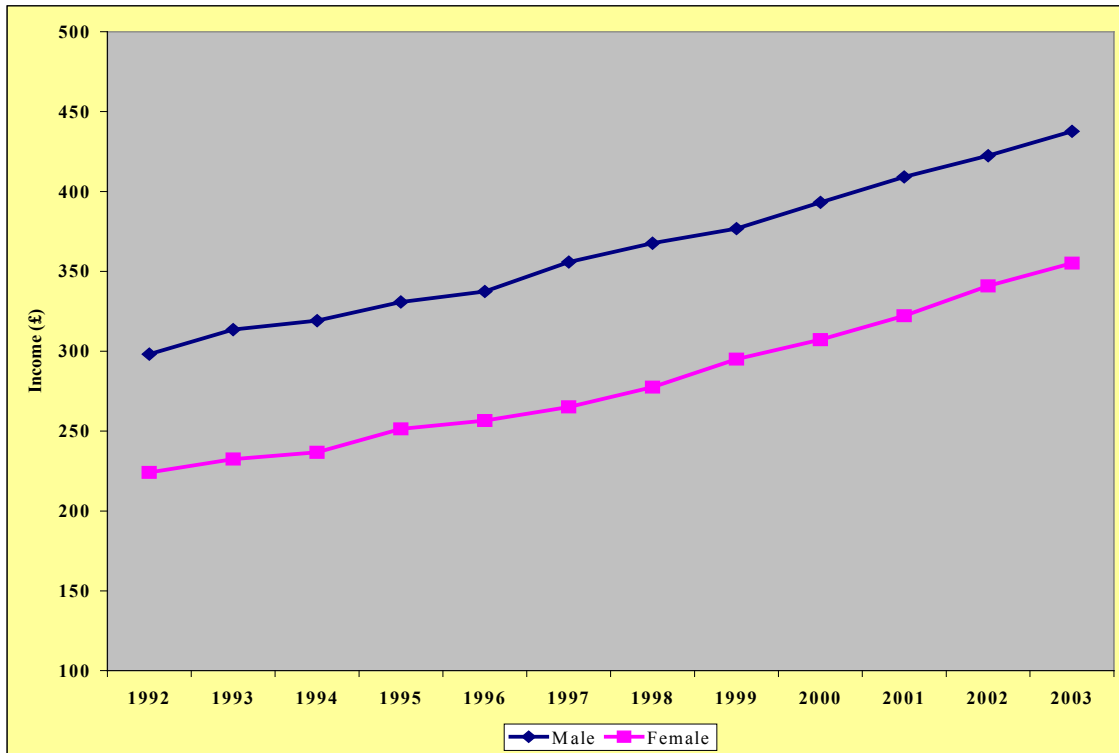
Source: 2001 Labour Force Survey Religion Report, NISRA

	1992	1993	1994	1995	1996	1997	1998	1999	2000	2001
Male	14.1	12.0	11.2	9.9	5.6	10.5	7.2	4.8	3.3	5.2
Female	2.7	3.4	2.2	4.9	4.1	2.0	2.1	2.6	4.0	2.2
Both	9.3	8.7	7.5	7.8	5.0	6.9	5.0	3.8	3.6	4.0

Note:

1. The unemployment gap is the absolute difference between the unemployment rates of Catholics and Protestants.

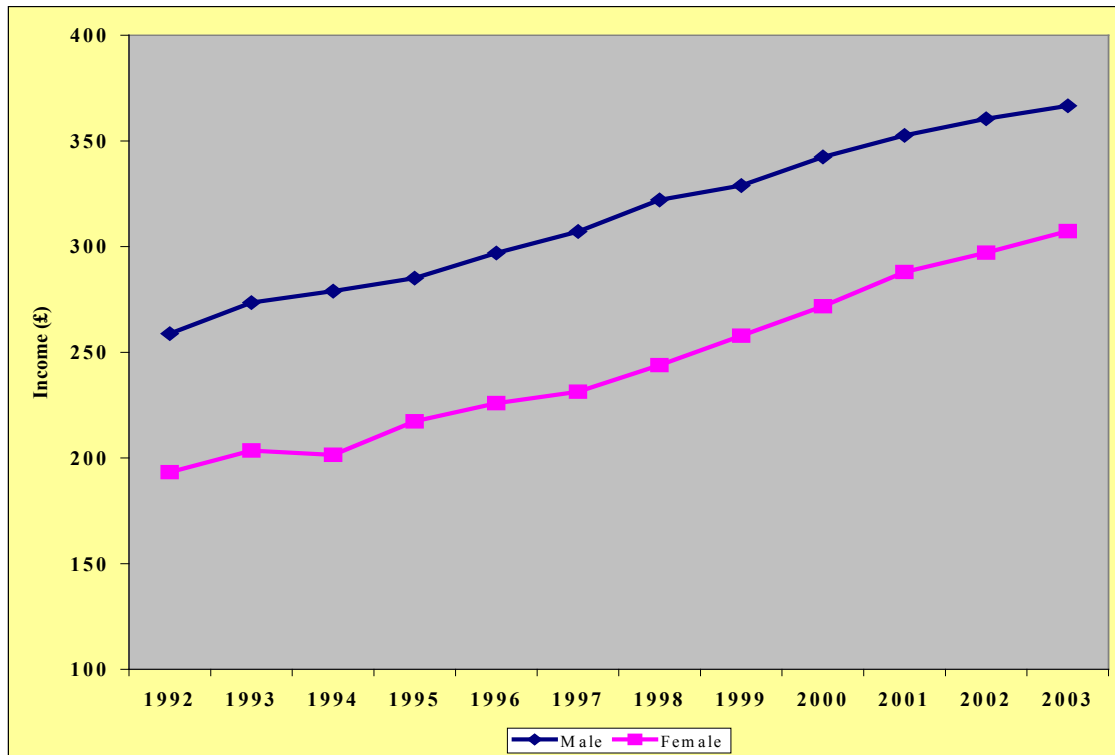
### Indicator 3.14a Average Gross Weekly Earnings



Source: New Earnings Survey, NISRA

	1992	1993	1994	1995	1996	1997	1998	1999	2000	2001	2002	2003
Male	298.2	313.6	319.2	330.9	337.5	355.9	367.7	376.8	393.3	409.2	422.5	437.7
Female	224.2	232.5	236.7	251.4	256.6	265.2	277.6	295.1	307.3	322.2	340.9	355.2
Both	269.6	282.4	286.5	300.2	306.2	319.7	332.6	344.9	360.4	375.0	390.1	404.5

### Indicator 3.14b Median Gross Weekly Earnings

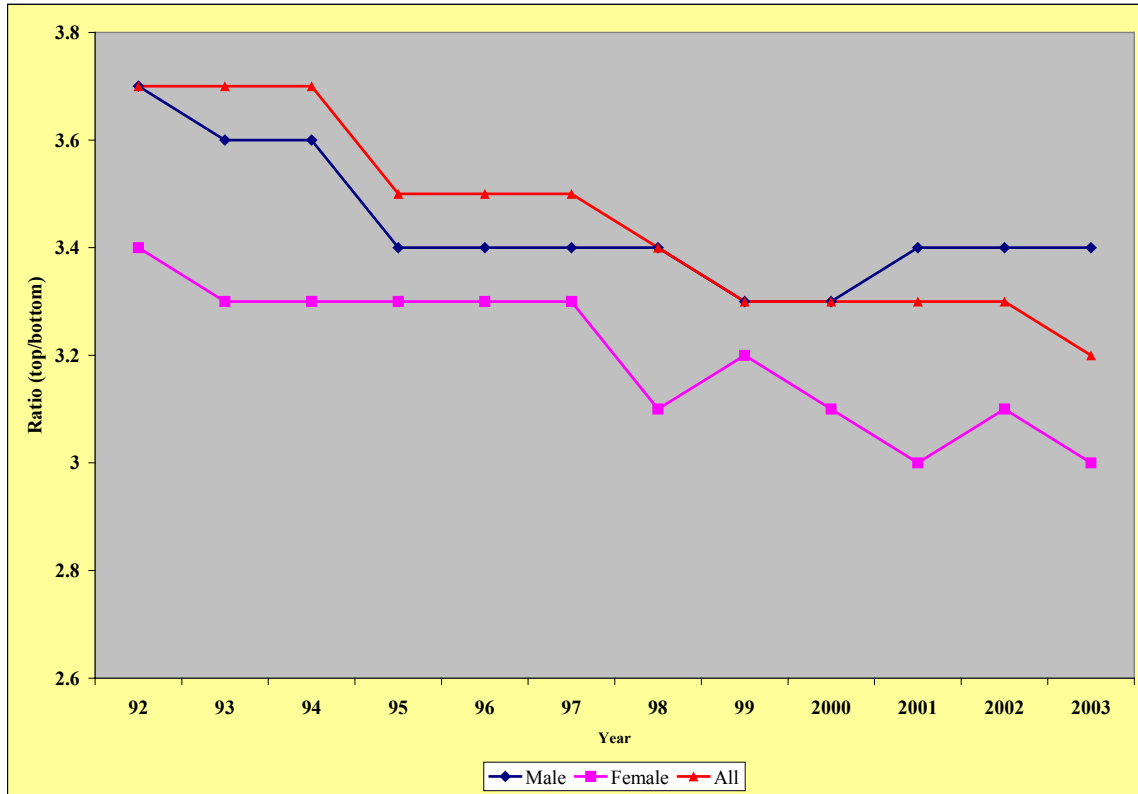


Source: New Earnings Survey, NISRA

	1992	1993	1994	1995	1996	1997	1998	1999	2000	2001	2002	2003
Male	258.8	273.5	278.9	285.1	297.0	307.1	322.1	328.9	342.4	352.6	360.5	366.6
Female	193.3	203.5	201.5	217.3	225.9	231.3	243.9	257.8	271.8	287.9	297.1	307.3
Both	234.7	245.5	245.1	257.8	267.1	276.8	288.9	301.8	310.4	324.1	334.3	343.3

### Indicator 3.14c Mean Gross Weekly Earnings

Ratio of the 10<sup>th</sup> percentile to 90<sup>th</sup> percentile of gross weekly earnings (90/10 ratio)

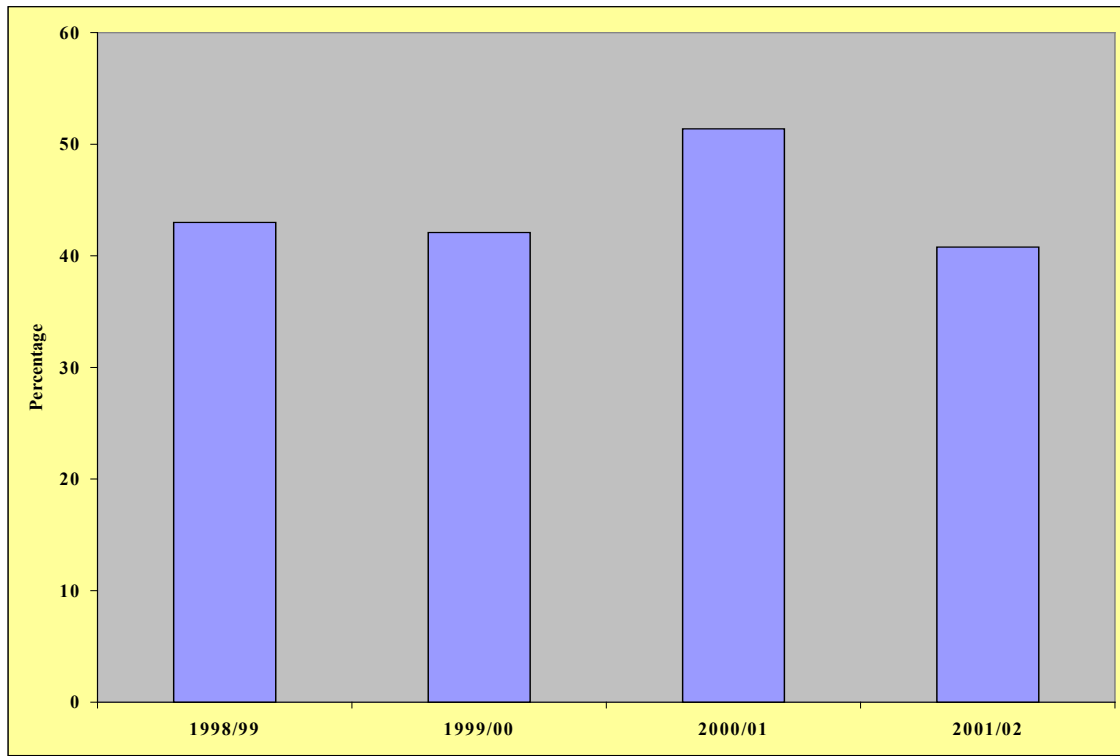


Source: New Earnings Survey, NISRA

	1992	1993	1994	1995	1996	1997	1998	1999	2000	2001	2002	2003
Male	3.7	3.6	3.6	3.4	3.4	3.4	3.4	3.3	3.3	3.4	3.4	3.4
Female	3.4	3.3	3.3	3.3	3.3	3.3	3.1	3.2	3.1	3.0	3.1	3.0
Both	3.7	3.7	3.7	3.5	3.5	3.5	3.4	3.3	3.3	3.3	3.3	3.2

# **OLDER PEOPLE**

Indicator 4.1 Proportion of pensioners with no income other than state retirement pension or state benefits



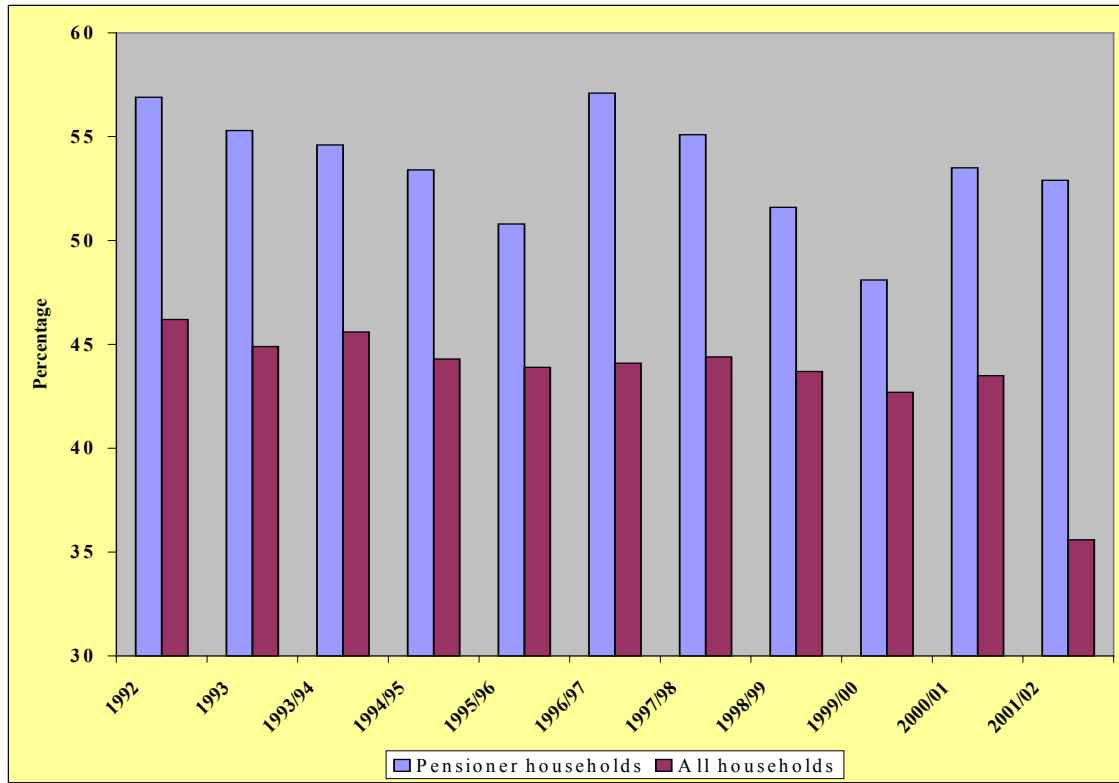
Source: Family Expenditure Survey and Expenditure and Food Survey, NISRA

	1998/99	1999/00	2000/01	2001/02
	%	%	%	%
Proportion of pensioners with no other income apart from state retirement pension or other state benefits (%)	43	42.1	51.4	40.8

Note:

1. As these figures are based on data at personal level in the NI EFS database the base figures are not comparable with those given at household level.

## Indicator 4.2 Proportion of pensioner's weekly spend on necessities



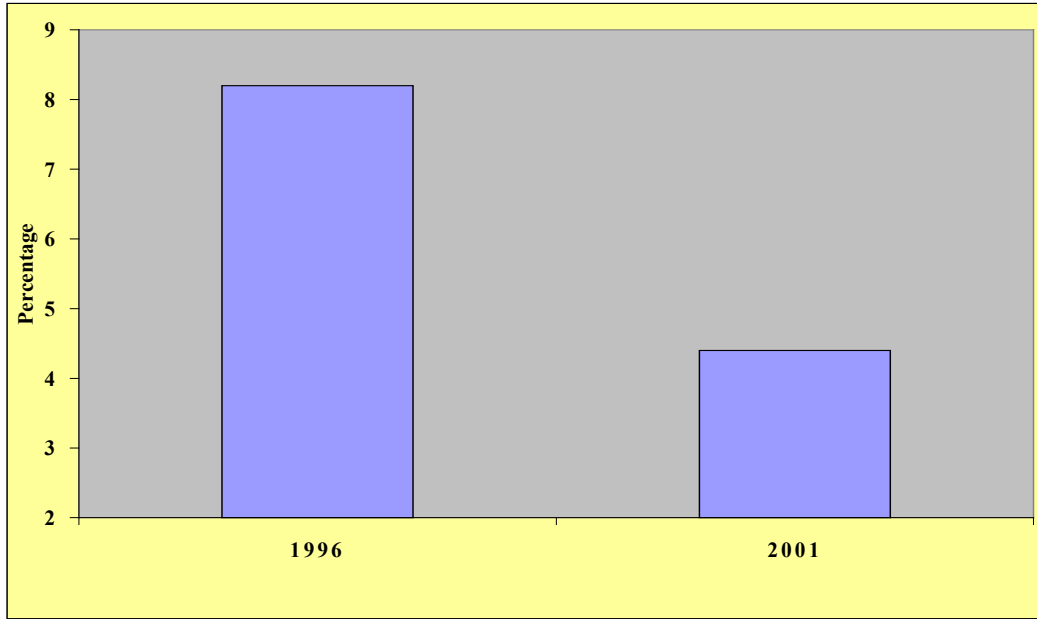
Source: Family Expenditure Survey and Expenditure and Food Survey, NISRA

	Pensioner households	All households
	%	%
1992	56.9	46.2
1993	55.3	44.9
1993/94	54.6	45.6
1994/95	53.4	44.3
1995/96	50.8	43.9
1996/97	57.1	44.1
1997/98	55.1	44.4
1998/99	51.6	43.7
1999/00	48.1	42.7
2000/01	53.5	43.5
2001/02	52.9	35.6

Note:

1. A pensioner household is one in which at least three-quarters of the total income of the household is derived from national insurance and similar pensions including benefits paid in supplement to, or instead of, such pensions.
2. Necessities are defined as food, fuel, clothing and footwear and household goods.

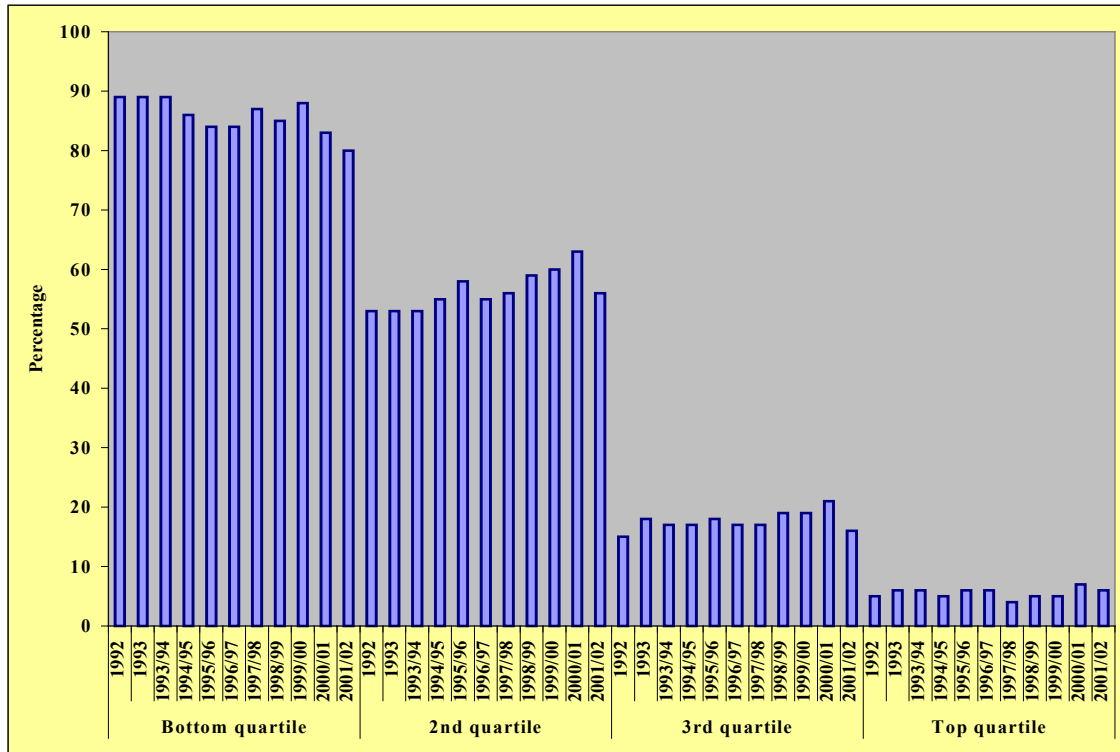
Indicator 4.3 Proportion of households where the head of household is aged 60 or over living in homes that are unfit



Source: Northern Ireland Housing Executive, House Conditions Survey

# **MACRO INDICATORS**

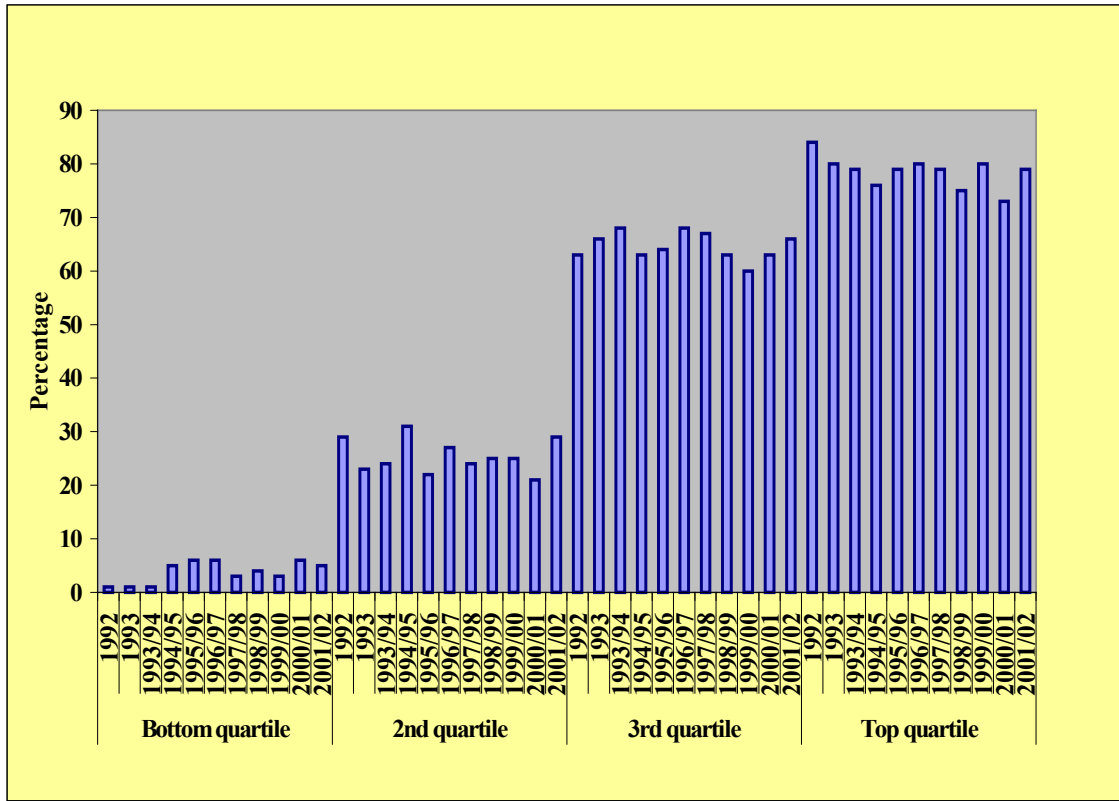
## Indicator 5.1a Social security as a percentage of income



Source: Expenditure and Food Survey

	Bottom quartile	2 <sup>nd</sup> quartile	3 <sup>rd</sup> quartile	Top quartile
	%	%	%	%
1992	89	53	15	5
1993	89	53	18	6
1993/94	89	53	17	6
1994/95	86	55	17	5
1995/96	84	58	18	6
1996/97	84	55	17	6
1997/98	87	56	17	4
1998/99	85	59	19	5
1999/00	88	60	19	5
2000/01	83	63	21	7
2001/02	80	56	16	6

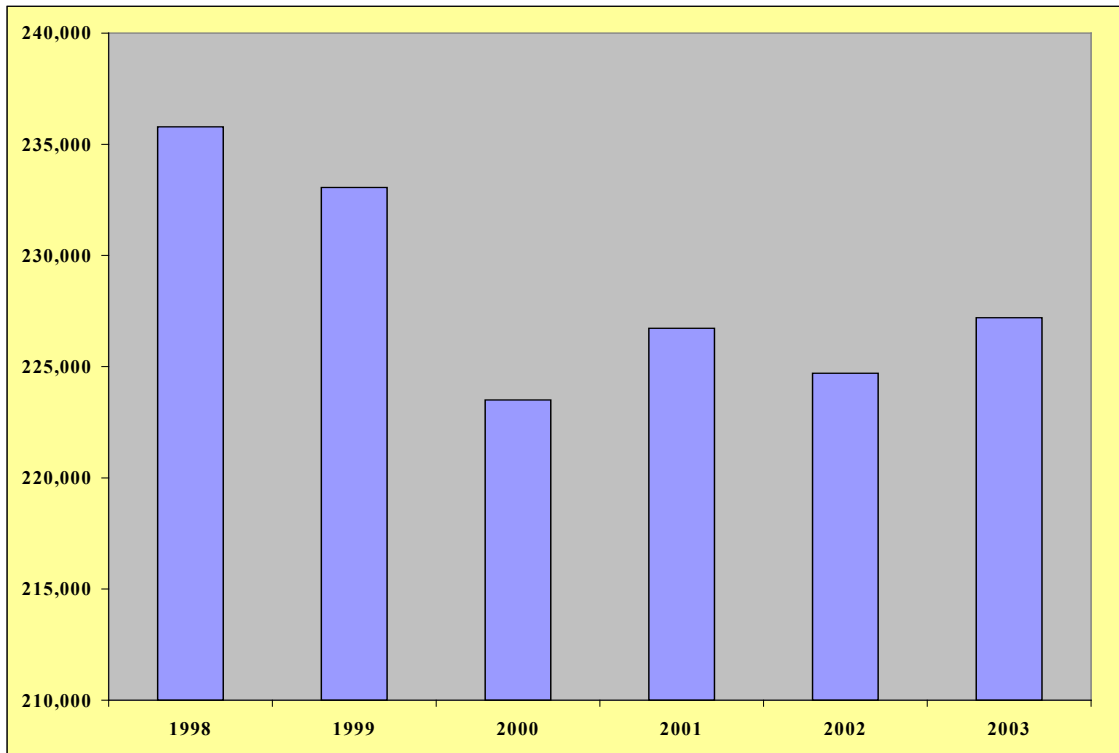
Indicator 5.1b Wages and salaries as a percentage of income



Source: Expenditure and Food Survey

	Bottom quartile	2 <sup>nd</sup> quartile	3 <sup>rd</sup> quartile	Top quartile
	%	%	%	%
1992	1	29	63	84
1993	1	23	66	80
1993/94	1	24	68	79
1994/95	5	31	63	76
1995/96	6	22	64	79
1996/97	6	27	68	80
1997/98	3	24	67	79
1998/99	4	25	63	75
1999/00	3	25	60	80
2000/01	6	21	63	73
2001/02	5	29	66	79

Indicator 5.2 The number of working age people in receipt of a key benefit



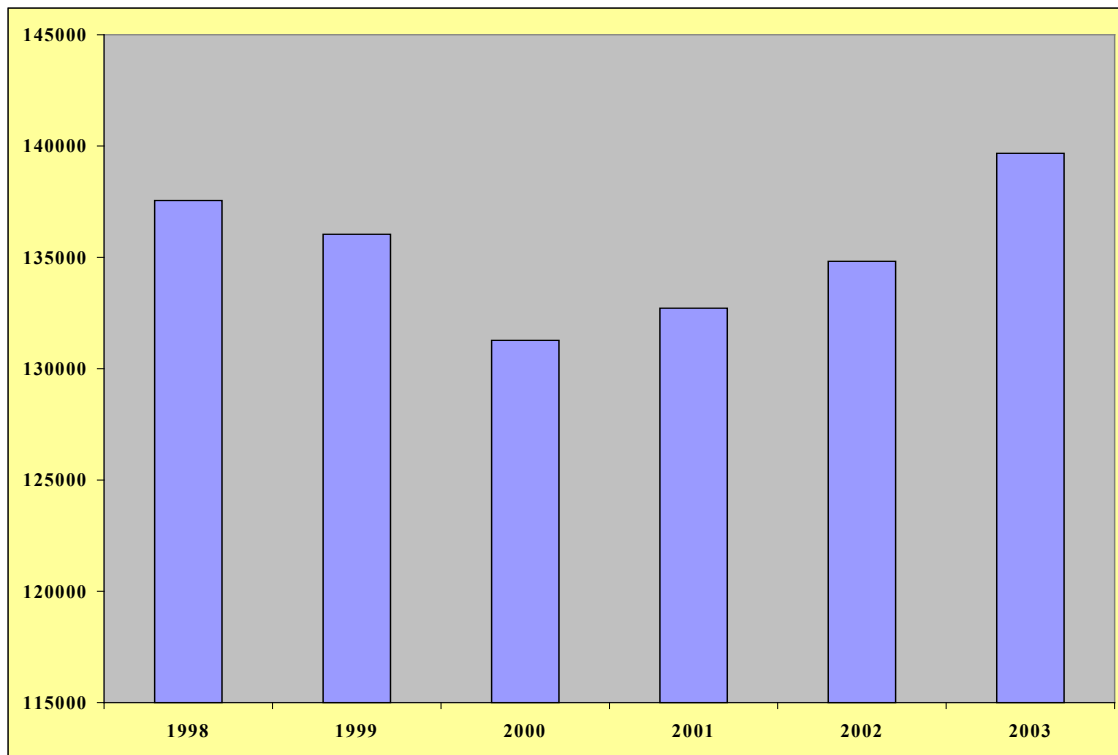
Source: DSD

	1998	1999	2000	2001	2002	2003
Total number of claimants	336,980	332,960	323,460	330,400	331,340	335,720
Working age claimants	235,780	233,060	223,500	226,720	224,700	227,200
Working age claimants as a percentage of the total	70%	70%	69%	69%	68%	68%

Notes:

1. Working age comprises males aged 16 – 64 and females 16 – 59.
2. Key benefits refer to Jobseekers Allowance, Incapacity Benefit, Severe Disablement Allowance, Disability Living Allowance and Income Support.
3. Figures are based on a 5% sample of claimants at February of the relevant year.
4. Data is not available prior to 1998.
5. Includes both those in receipt of financial assistance and those in receipt of National Insurance credits only.

Indicator 5.3 The number of individuals claiming Jobseekers Allowance (JSA) or Income Support (IS) for a period of 2 years or more



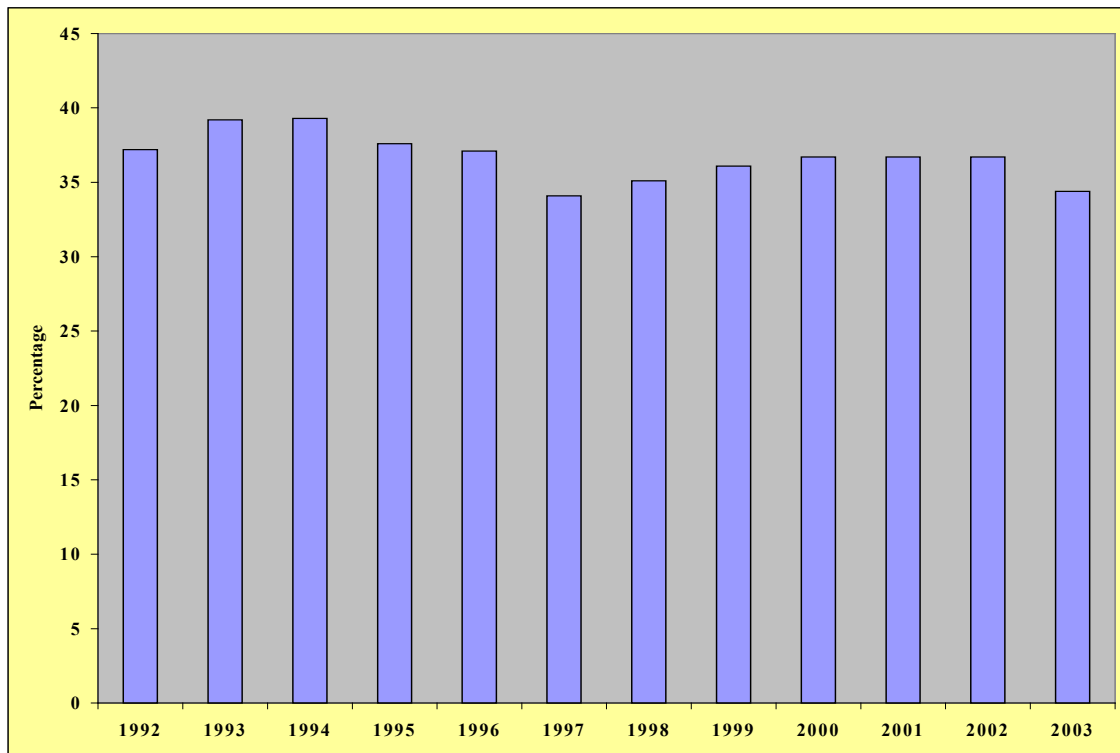
Source: DSD

	1998	1999	2000	2001	2002	2003
Number claiming JSA or IS	222,023	217,998	212,855	214,186	212,027	213,928
Number claiming JSA or IS for 2 years or more	137,551	136,039	131,268	132,716	134,824	139,672
Percentage of claimants claiming for 2 years or more	62%	62%	62%	62%	64%	65%

Notes:

1. Figures in this table may be affected by the introduction of new tax credits in April 2003.
2. Figures are based on a 5% sample of information for Income Support and a 100% sample of information for Jobseekers Allowance.
3. Figures are taken from May of the appropriate year.

## Indicator 5.4 Proportion of households which are workless



Source: Labour Force Survey, DETI

	1992	1993	1994	1995	1996	1997	1998	1999	2000	2001	2002	2003
	%	%	%	%	%	%	%	%	%	%	%	%
Males	26.5	28.4	28.2	27.4	27.9	25.3	25.4	25.3	27.0	27.5	26.4	24.1
Females	66.8	68.7	67.6	65.5	65.9	62.9	63.4	65.8	64.0	62.4	64.5	64.2
Catholic				38.4	38.2	35.2	36.2	36.6	38.1	38.9	37.2	33.6
Protestant				38.2	37.4	34.3	35.4	37.2	36.7	36.4	38.8	35.8
One person	75.6	75.4	73.7	73.7	72.7	69.8	71.3	71.8	70.2	67.1	69.9	71.0
Couple no children	45.2	45.0	42.9	41.1	49.6	41.9	44.3	42.4	41.8	43.7	39.5	41.0
Couple some children	9.8	11.0	12.4	9.9	9.7	8.6	7.5	8.1	9.0	8.4	8.8	4.5
Lone parent	43.6	44.6	45.2	45.7	39.7	39.8	40.5	41.4	39.6	37.8	43.3	40.5
Disabled adult in household							34.3	36.7	51.4	46.6	51.4	52.4
No disabled adult in household							35.4	35.9	26.3	32.4	28.4	21.9

---

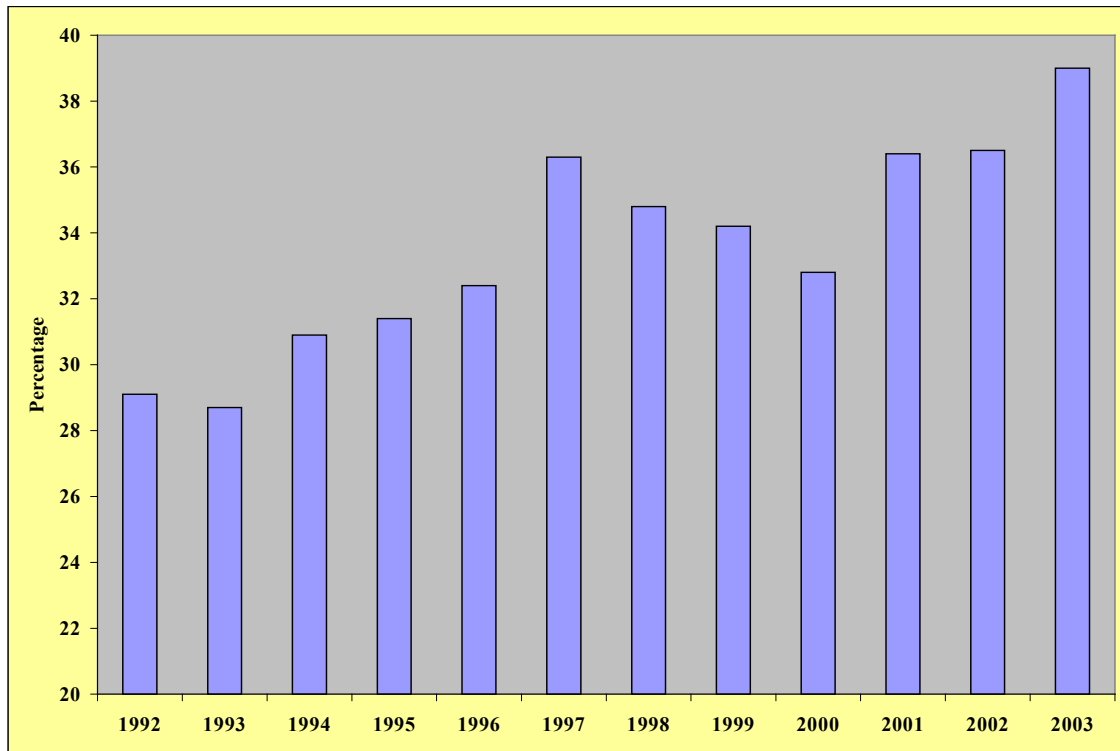
Children under 16 in household	19.6	20.8	23.4	21.3	20.0	16.8	17.4	17.6	19.1	19.3	17.9	16.4
No children under 16 in household	47.2	48.8	47.7	46.2	46.0	44.4	45.1	45.7	45.0	40.9	44.5	43.6
All households	37.2	39.2	39.3	37.6	37.1	34.1	35.1	36.1	36.7	36.7	36.7	34.4

---

Note:

1. A workless household is a household where no one is in employment.
2. Data is from spring of each year.

## Indicator 5.4b Proportion of households which are work-rich



Source: Labour Force Survey, DETI

	1992	1993	1994	1995	1996	1997	1998	1999	2000	2001	2002	2003
	%	%	%	%	%	%	%	%	%	%	%	%
Males	33.9	33.4	36.1	36.0	36.3	40.0	39.5	38.6	36.6	40.4	41.2	43.6
Females	15.9	16.0	17.4	18.7	20.2	24.0	21.2	22.3	22.2	24.9	24.0	25.5
Catholic				25.1	28.0	30.3	29.5	29.3	28.2	31.7	33.3	34.9
Protestant				34.0	34.7	39.5	37.1	36.1	34.8	38.0	36.4	40.7
One person	22.6	21.8	24.4	26.0	27.3	30.2	28.7	28.2	29.8	32.9	30.1	29.0
Couple no children	31.5	31.4	37.2	33.2	31.8	38.7	33.7	38.4	34.4	36.1	37.7	35.9
Couple some children	36.7	36.1	37.0	38.6	39.3	41.9	42.8	41.0	37.5	42.7	43.8	50.0
Lone parent	17.0	17.9	19.1	19.8	24.6	29.3	25.8	23.8	26.7	32.5	29.8	32.7
Disabled adult in household							18.1	20.0	13.2	17.2	16.8	17.4
No disabled adult in household							41.1	39.1	46.6	44.6	47.7	54.0

---

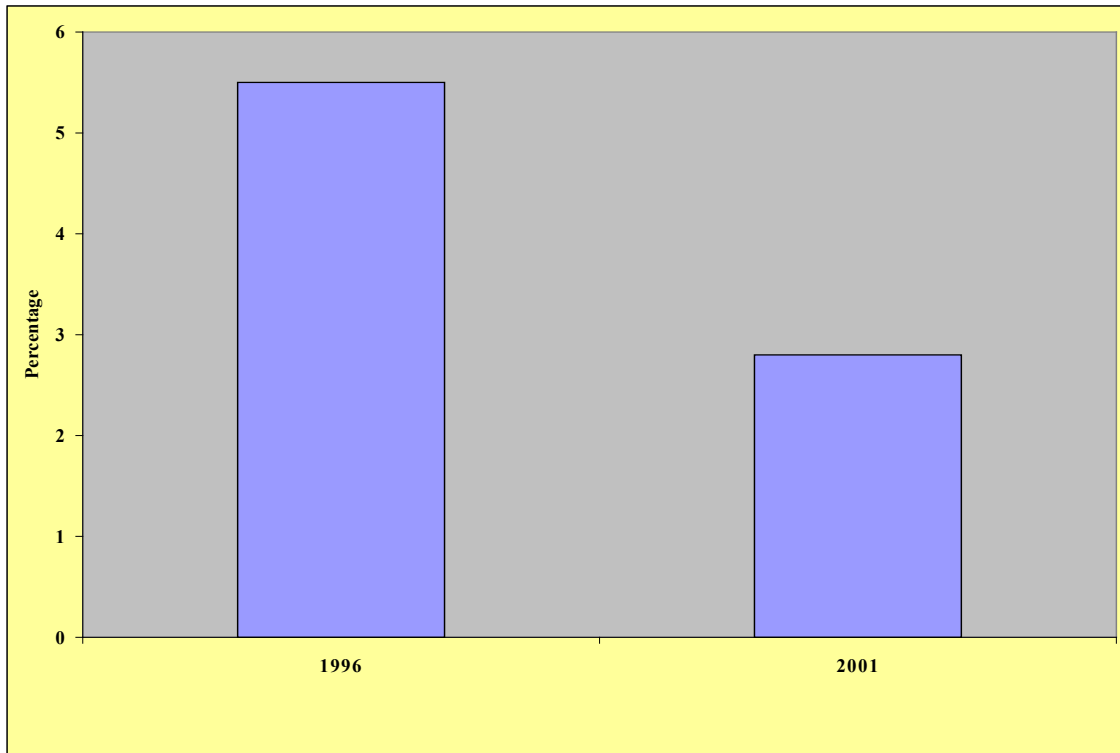
Children under 16 in household	39.5	38.8	38.6	41.0	43.2	46.2	46.2	43.8	42.1	46.1	47.3	50.4
No children under 16 in household	23.2	23.5	26.7	26.3	26.8	30.4	28.3	29.3	28.4	34.0	32.1	33.1
All households	29.1	28.7	30.9	31.4	32.4	36.3	34.8	34.2	32.8	36.4	36.5	39.0

---

Note:

1. A work-rich household is a household where everyone is in employment.
2. Data is from spring of each year.

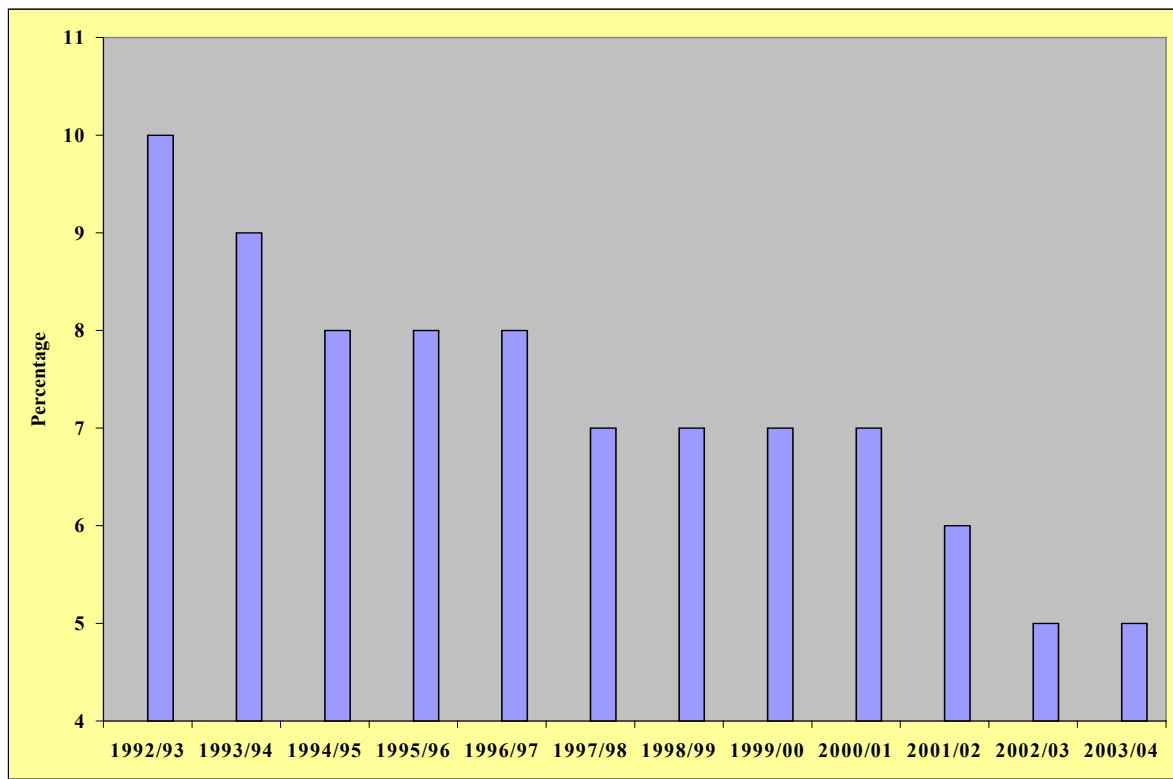
Indicator 5.5 The proportion of households that live in homes that are unfit



Source: Northern Ireland Housing Executive House Conditions Survey

	1996	2001
	%	%
Proportion of households that live in homes that are unfit	5.5	2.8

Indicator 5.6 The proportion of households that live in homes below the bedroom standard



Source: NISRA (Continuous Household Survey)

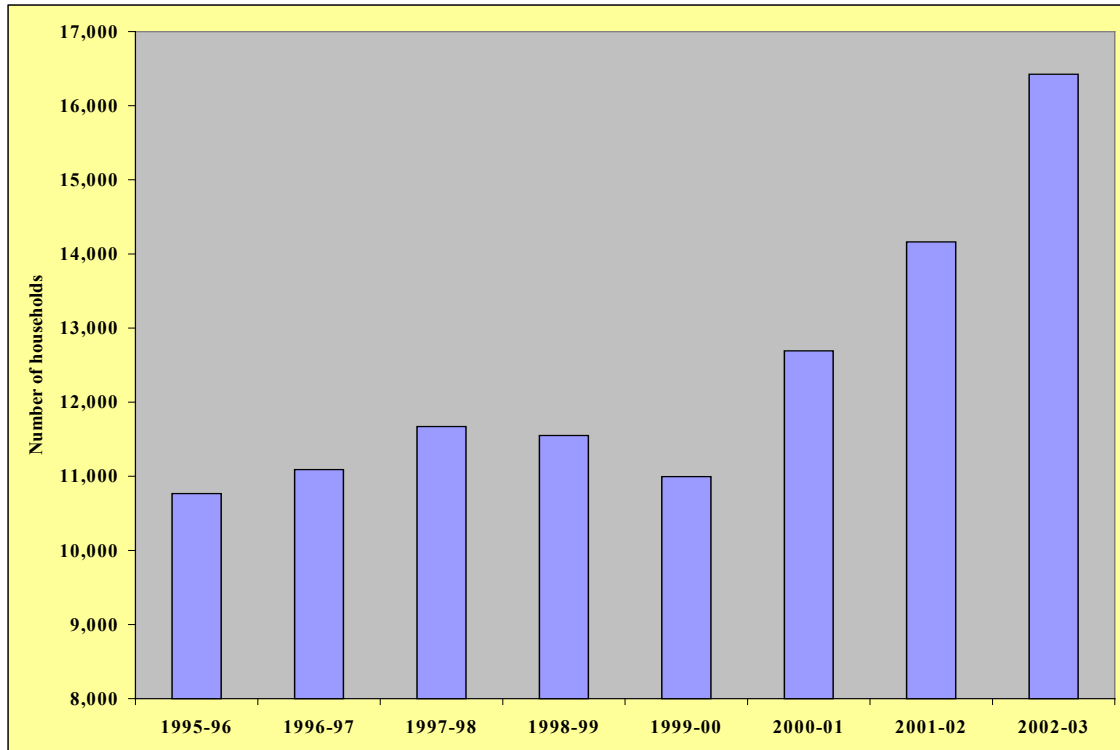
	92/93	93/94	94/95	95/96	96/97	97/98	98/99	99/00	00/01	01/02	02/03	03/04
	%	%	%	%	%	%	%	%	%	%	%	%
Male	10	9	9	8	9	7	7	7	7	6	5	6
Female	10	9	7	8	7	7	7	6	7	6	5	5
Single	7	6	5	6	14	12	13	11	12	11	9	8
Married/cohabiting	12	6	0	2	6	5	5	5	5	4	3	4
Widowed	6	3	3	2	2	3	3	3	3	3	2	3
Divorced/separated	18	18	16	14	6	6	6	5	4	6	4	6
Long-standing illness	8	5	4	6	5	4	5	4	5	4	3	4
No illness	10	10	9	9	9	7	8	7	7	7	6	5
Aged 16-19	21	21	16	17	20	16	18	15	14	16	12	10
Aged 20-29	15	15	16	12	13	13	13	12	14	12	8	9
Aged 30-39	8	6	6	7	6	6	6	6	6	4	6	5
Aged 40-49	9	10	9	9	9	8	8	8	8	8	5	5
Aged 50-59	8	9	6	6	7	4	6	5	4	3	3	5
Aged 60-69	5	3	3	3	2	2	2	1	4	1	1	2

Aged 70-70	3	1	1	1	1	1	1	1	2	1	0	2
Aged 80+	5	2	0	4	2	0	1	2	2	2	0	1
Dependent children	13	12	12	13	13	11	13	12	11	11	8	8
No dependent children	8	6	4	4	4	4	3	4	5	3	3	4
Catholic	16	14	12	11	11	9	10	10	9	10	8	8
Protestant	5	4	4	4	4	3	3	3	4	2	3	3
<b>All households</b>	<b>10</b>	<b>9</b>	<b>8</b>	<b>8</b>	<b>8</b>	<b>7</b>	<b>7</b>	<b>7</b>	<b>7</b>	<b>6</b>	<b>5</b>	<b>5</b>

Note:

1. A household is a single person, or a group of people living at the same address who have that address as their only or main residence and either share one main meal a day or share the living accommodation (or both).
2. The bedroom standard is used to estimate occupation density by allocating a standard number of bedrooms to each household in accordance with its age/sex/marital status composition and the relationship of the members to one another. A separate bedroom is allocated to each married or cohabiting couple, any other person aged 21 or over, each pair of adolescents aged 10–20 of the same sex, and each pair of children under 10. Any unpaired person aged 10–20 is paired if possible with a child under 10 of the same sex, or, if that is not possible, is given a separate bedroom, as is any unpaired child under 10. This standard is then compared with the actual number of bedrooms (including bed sitters) available for the sole use of the household, and deficiencies or excesses are tabulated. Bedrooms converted to other uses are not counted as available unless they have been denoted as bedrooms by the respondents; bedrooms not actually in use are counted unless uninhabitable.

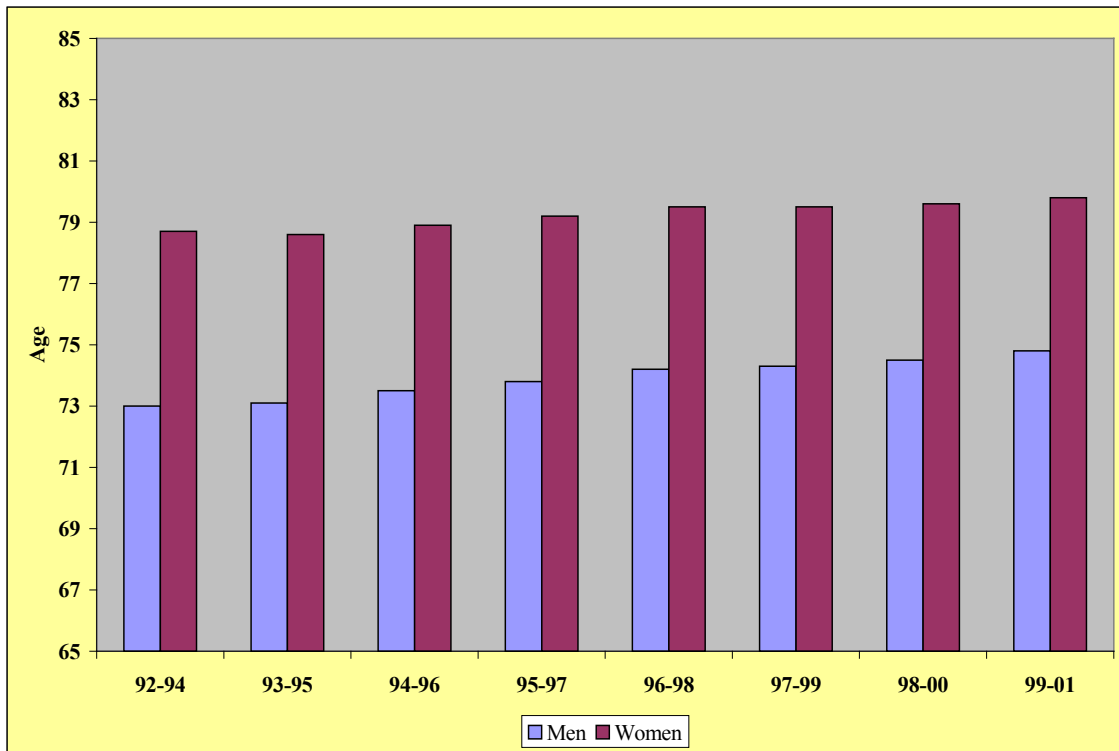
## Indicator 5.7 Homeless households by household type



Source: Northern Ireland Housing Executive

Household Type	1995-96	1996-97	1997-98	1998-99	1999-00	2000-01	2001-02	2002-03
<b>Single Males</b>								
(16-18 yrs)	282	328	313	332	344	152	188	192
(19-25 yrs)	998	1,030	993	955	1,006	1,270	1,367	1,720
(26-59 yrs)	1,916	2,237	2,317	2,306	2,202	2,671	3,066	3,675
<b>Single Females</b>								
(16-18 yrs)	533	515	584	541	480	174	263	291
(19-25 yrs)	870	766	811	855	684	1,027	1,096	1,172
(26-59 yrs)	658	763	769	799	739	867	1,097	1,229
Couples	507	544	546	508	523	651	674	893
Families	4,473	4,461	4,781	4,718	4,541	5,170	5,405	5,871
Pensioner Households	531	448	474	500	478	712	1,008	1,383
Undefined	0	0	84	38	0	0	0	0
<b>TOTAL</b>	<b>10,768</b>	<b>11,092</b>	<b>11,672</b>	<b>11,552</b>	<b>10,997</b>	<b>12,694</b>	<b>14,164</b>	<b>16,426</b>

## Indicator 5.8 Life expectancy at birth



Source: *The Annual Report of the Registrar General, 2001 (NISRA)*

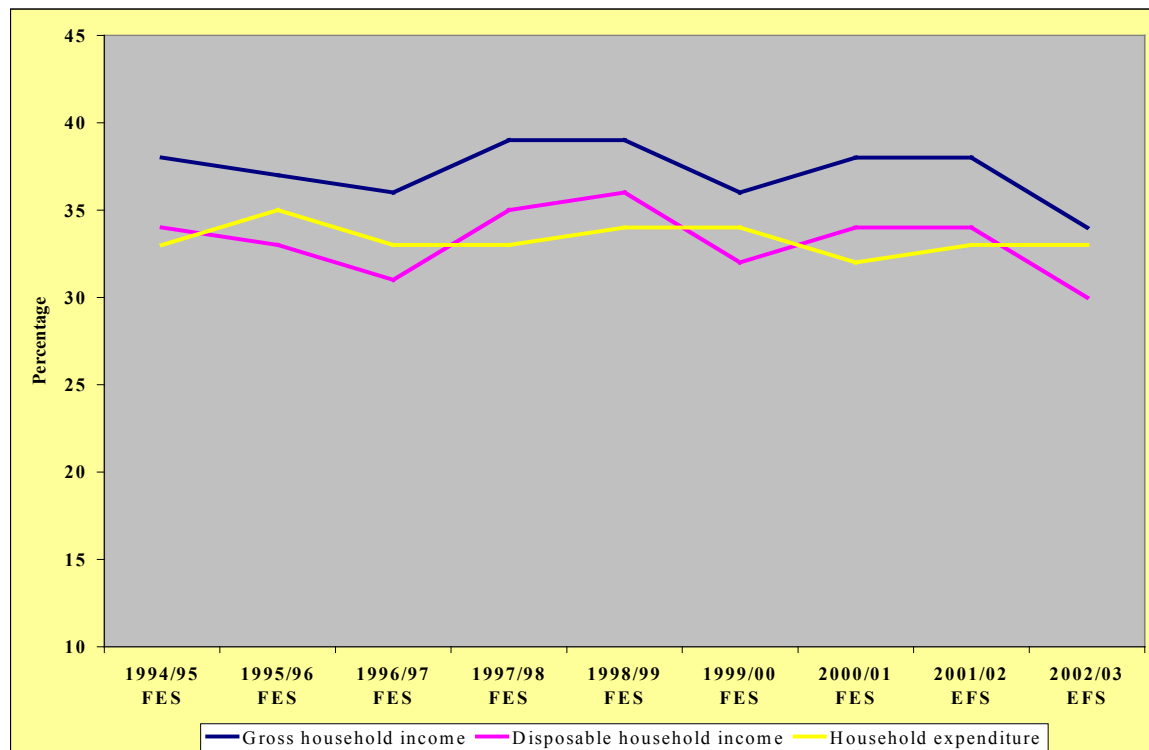
	Men	Women
1992-1994	73.0	78.7
1993-1995	73.1	78.6
1994-1996	73.5	78.9
1995-1997	73.8	79.2
1996-1998	74.2	79.5
1997-1999	74.3	79.5
1998-2000	74.5	79.6
1999-2001	74.8	79.8

Note:

1. Data derived from Government Actuary's Department (GAD).

# **POVERTY MEASURES**

## Gini Coefficient: Analyses of household income and expenditure



Source: OFMDFM

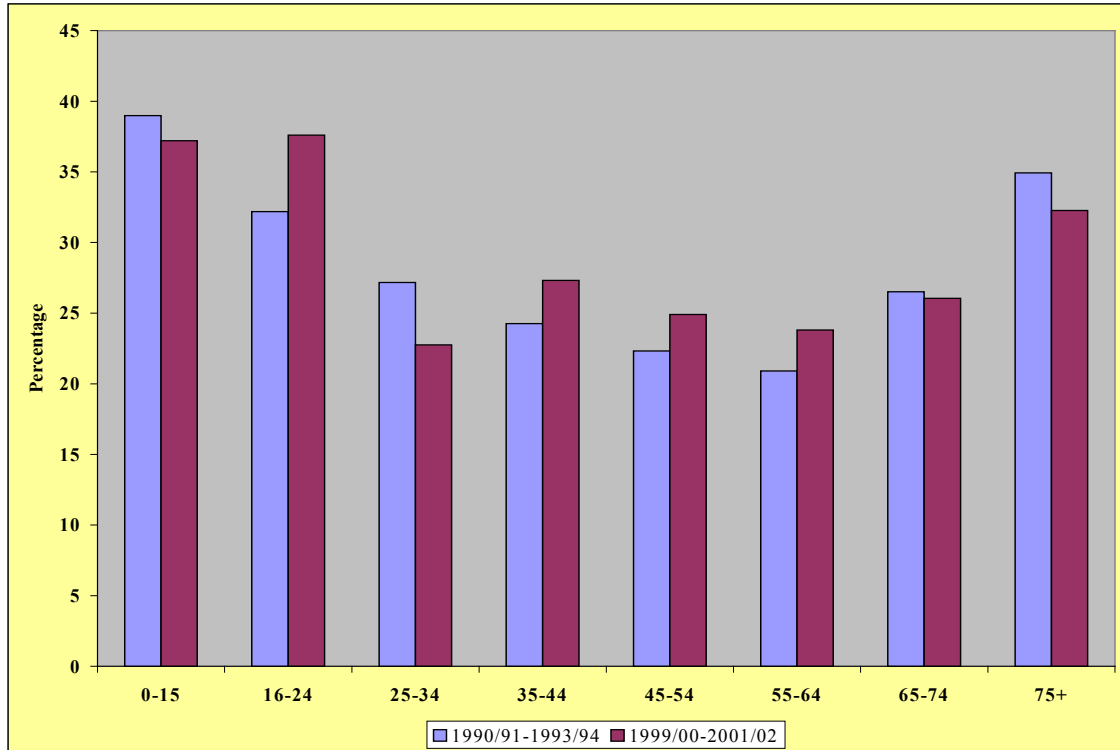
Year/Source	Gross household income	Disposable income	Household Expenditure
1994/95 FES	38	34	33
1995/96 FES	37	33	35
1996/97 FES	36	31	33
1997/98 FES	39	35	33
1998/99 FES	39	36	34
1999/00 FES	36	32	34
2000/01 FES	38	34	32
2001/02 EFS	38	34	33
2002/03 EFS	34	30	33

Note:

1. The Gini coefficient is a mathematical measure that can be used to compare the similarity, or dissimilarity, of two distributions. In this case, it measures the extent to which the distribution of income and expenditure deviates from a perfectly equal distribution. A Lorenz curve is used to plot the cumulative proportion of income and expenditure against the cumulative proportion of households. The Gini coefficient measures the area between the curve and a hypothetical line of absolute equality. It is typically expressed as a percentage and runs on a scale of 0, representing total equality, to 100, representing total inequality.

## Low income households

### Age groups – Risk of low income



Source: *Low Income Households in Northern Ireland 1990-2002, OFMDFM*

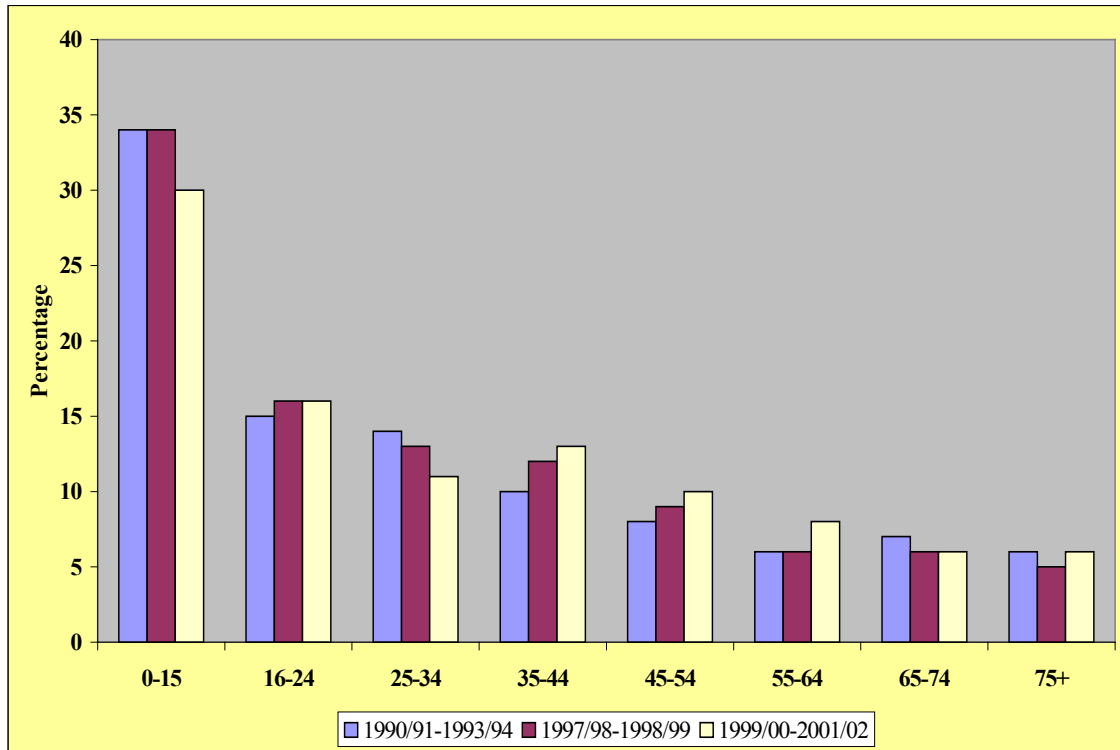
	1990/91-1993/94	1999/00-2001/02
	%	%
0-15	39	37
16-24	32	37
25-34	27	22
35-44	24	27
45-54	22	25
55-64	21	24
65-74	26	26
75+	35	32

Note:

1. Risk of low income is defined as the percentage of households with a particular characteristic that are in the bottom 30% of the income distribution.

## Low Income Households

### Age groups – Low income concentration



Source: *Low Income Households in Northern Ireland 1990-2002, OFMDFM*

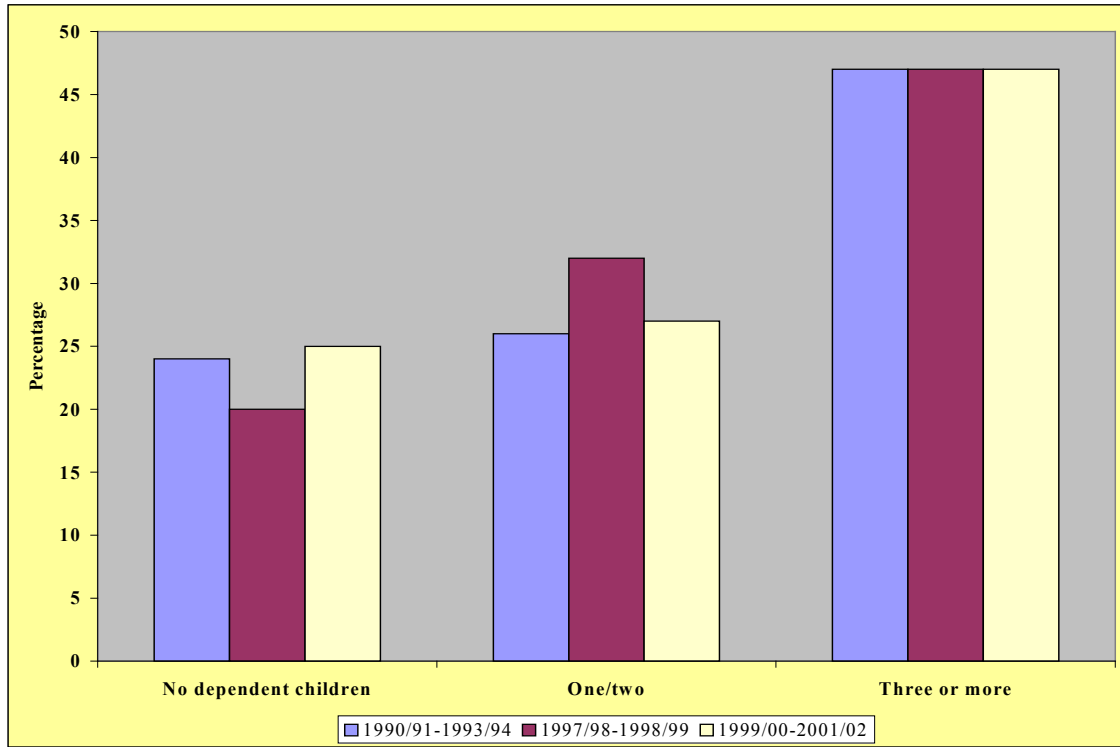
	1990/91-1993/94	1997/98-1998/99	1999/00-2001/02
	%	%	%
0-15	34	34	30
16-24	15	16	16
25-34	14	13	11
35-44	10	12	13
45-54	8	9	10
55-64	6	6	8
65-74	7	6	6
75+	6	5	6

Note:

1. The concentration of low income is defined as a particular type of household's percentage share of all households in low income.

## Low Income Households

### Dependent children in the household – Risk of low income



Source: *Low Income Households in Northern Ireland 1990-2002, OFMDFM*

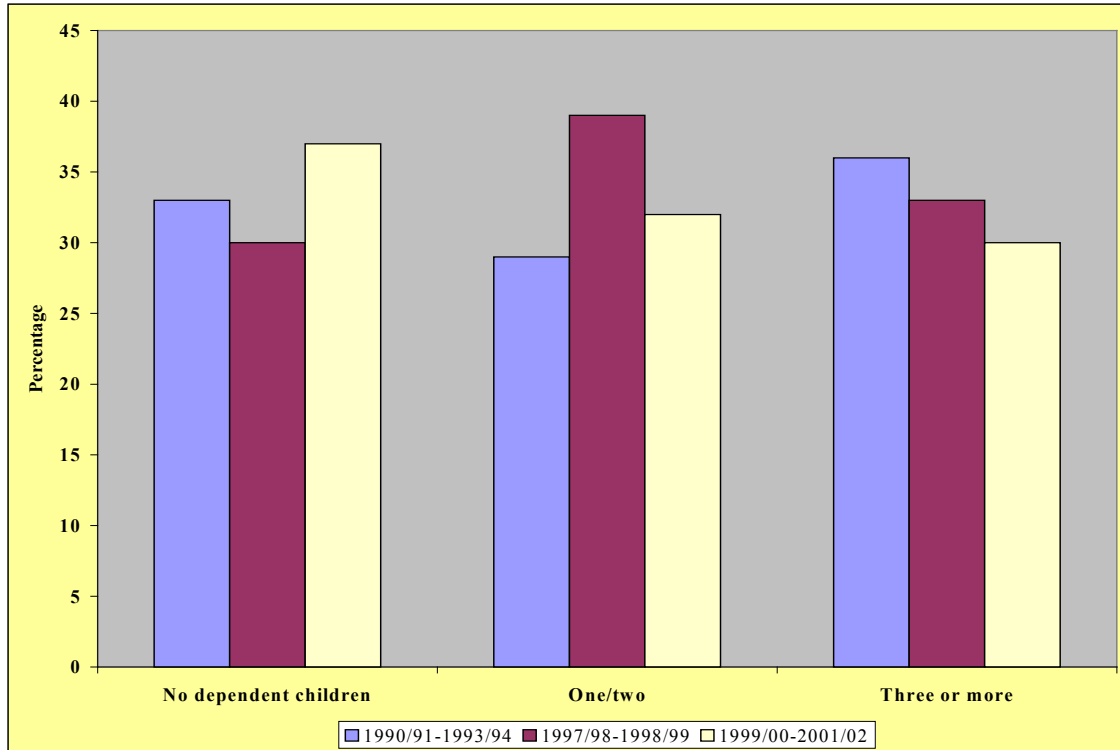
	1990/91-1993/94	1997/98-1998/99	1999/00-2001/02
	%	%	%
No dependent children	24	20	25
One/two dependent children	26	32	27
Three or more dependent children	47	47	47

Note:

1. Risk of low income is defined as the percentage of households with a particular characteristic that are in the bottom 30% of the income distribution.

## Low Income Households

### Dependent children in the household – Concentration of low incomes



Source: *Low Income Households in Northern Ireland 1990-2002, OFMDFM*

	1990/91-1993/94	1997/98-1998/99	1999/00-2001/02
	%	%	%
No dependent children	33	30	37
One/two dependent children	29	39	32
Three or more dependent children	36	33	30

Note:

1. The concentration of low income is defined as a particular type of household's percentage share of all households in low income.

## Consensual Poverty

Group	Consensual Poverty Rate
	%
Men	25
Women	29
Catholic	36
Protestant	25
16-24	41
25-34	32
35-44	27
45-54	29
44-64	35
65-74	25
75+	22
Single	39
Married/cohabiting	21
Separated	54
Divorced	46
Widowed	28
No-one with a disability in the household	29
One or more with a disability in the household	56
Caring for an adult	36
Caring for children	32
No-one cared for	28
Lone parents	67
Housing Executive tenants	67
Workless households through sickness/disability	100
Workless households through unemployment	70

*Source: Bare Necessities: Poverty and Social Exclusion in Northern Ireland, Democratic Dialogue, 2003*

### Note:

1. The consensual poverty rate is the proportion of the group defined as being in consensual poverty. Consensual poverty was defined as the enforced lack of three or more items generally considered to be a necessity combined with low income.
2. Poverty rates for groups are based on the characteristics of the household respondent in the survey except for sex and disability that reflect the total numbers of individuals within the households.

Northern Ireland Households Below Average Income – selected data

Income sources as a proportion of gross income by quintile

	<b>Bottom Quintile</b>		<b>Second Quintile</b>		<b>Middle Quintile</b>		<b>Fourth Quintile</b>		<b>Top Quintile</b>		<b>Overall</b>	
	<b>NI</b>	<b>GB</b>	<b>NI</b>	<b>GB</b>	<b>NI</b>	<b>GB</b>	<b>NI</b>	<b>GB</b>	<b>NI</b>	<b>GB</b>	<b>NI</b>	<b>GB</b>
Sources of income	%	%	%	%	%	%	%	%	%	%	%	%
Earnings	27	36	50	59	62	76	78	84	87	86	69	77
Investments	3	2	1	2	2	2	2	2	4	6	3	4
Occupational Pensions	2	2	3	4	6	5	7	5	5	5	5	5
Miscellaneous Benefits/Tax Credits	2	4	1	3	1	2	0	1	0	1	1	2
	72	55	44	32	29	15	15	7	3	2	23	13

Percentage of individuals below thresholds of contemporary and 1996/7 real terms median income

	<b>Below 50% median</b>		<b>Below 60% median</b>		<b>Below 70% median</b>	
	<b>NI</b>	<b>GB</b>	<b>NI</b>	<b>GB</b>	<b>NI</b>	<b>GB</b>
	%	%	%	%	%	%
<b>All individuals</b>						
Contemporary income thresholds	13	14	19	22	27	30
1996/7 income thresholds held constant in real terms	7	8	13	14	18	20

<b>Children</b>						
Contemporary income thresholds	17	19	26	28	33	38
1996/7 income thresholds held constant in real terms	8	10	17	17	24	26
<b>Working age adults</b>						
Contemporary income thresholds	13	14	17	19	24	25
1996/7 income thresholds held constant in real terms	7	9	12	13	16	18
<b>Pensioners</b>						
Contemporary income thresholds	8	10	17	21	28	36
1996/7 income thresholds held constant in real terms	3	5	8	9	15	18

*Source: Households Below Average Income. An analysis of the income distribution 1995/95 – 2002/03. DWP (2004)*

Note:

1. Figures relate to 2002/03, the first year that the Family Resources Survey, from which the figures are derived, was run in Northern Ireland.
2. All median thresholds are GB thresholds.
3. All estimates are After Housing Costs (AHC), that is, a measure of housing cost is deducted from net household income.

4. Contemporary income refers to the period 2002/03, with household incomes adjusted from the date of interview to an average of 2002/03 prices.
5. 1996/7 income thresholds refer to the proportions of each group that are below fixed thresholds of 1996/7 median income updated in real terms each year.

## ANNEX 1

### INDICATOR DEVELOPMENT

#### COMPARATIVE DEVELOPMENTS IN GREAT BRITAIN

The development of the indicators within this report have been informed by similar developments in Great Britain, and specifically the UK Governments series of annual reports entitled “Opportunity for All”, the “Monitoring Poverty and Social Exclusion” reports commissioned and published by the Joseph Rowntree Foundation and the indicators reported on within the National Action Plans on Social Inclusion.

##### *Monitoring Poverty and Social Exclusion*

Since 1998, the Joseph Rowntree Foundation has produced four annual reports focusing on indicators intended to portray the key features of poverty and social exclusion in Great Britain. Whilst income is the focus of many of the indicators, they also cover a wide range of other subjects including health, education, work, and engagement in community activities.

The indicators reported on are grouped into six broad areas including: income; children; young adults; adults; older people; and community. Within each of the six specific areas, indicators are grouped by 14 themes including: income levels; income dynamics; economic circumstances; health and well-being; education and similar themes.

The sources of data utilised in the report are those collected by various Government Departments comprising both survey and administrative sources.

While, in the main, the coverage of the indicators is at the level of Great Britain some, for example the Labour Force Survey, are quoted at the level of the United Kingdom. The time coverage of the indicators reported varies depending on the nature and availability of the data. Many of the indicators reflect data from the early 1990’s to the present.

##### *Opportunity for All*

The Labour Government set objectives for tackling poverty and providing opportunity for all. Since 1999, annual reports were produced detailing the strategy and monitoring progress against a range of indicators. The reports are structured around the interventions designed to break the cycle of disadvantage at key stages in peoples’ lives specifically: children and young people; people of working age; and older people. The indicators that are used are derived from available data, from both survey and administrative sources.

The approach articulated in the Opportunity for All reports reflect the changed nature of government in the United Kingdom following devolution. The UK Government retains responsibility for fiscal and economic policy and taxation, social security benefits and

pensions are delivered on a parity principle. The devolved administrations in Northern Ireland, Wales and Scotland share the common goal of eradicating poverty and promoting social inclusion.

Given the above, the statistics reported in the Opportunity for All reports, largely reflects data at the level of Great Britain. As with the Joseph Rowntree Foundation reports, many of the indicators vary in terms of coverage over time however, the Opportunity for All reports utilise the 1996/1997 period as the baseline from which to chart change.

### ***National Action Plans for Social Inclusion***

In December 2001 the Laeken European Council endorsed a set of commonly agreed statistical indicators for social inclusion, to allow monitoring in a comparable way of Member States' progress towards the agreed EU objectives. All Member States are required to report on these indicators in their National Action Plans.

The indicators are split into primary and secondary indicators. The primary indicators are intended to cover the most important aspects of social inclusion with support from the secondary indicators elaborating on the primary indicators or by describing other dimensions. Eurostat produces the data for the primary and secondary indicators. Many of these are based upon the European Community Household Panel survey. While Northern Ireland is represented within the UK data, it is not possible to provide separate figures for Northern Ireland.

In addition to the primary and secondary indicators, the UK plan reports on a number of additional tertiary indicators that are designed to present more timely data or more detailed breakdowns or which reflect strategic priorities for the UK. The data for the tertiary indicators are not harmonised at European level.

Many of the indicators within the UK National Action Plan are replicated within the current report. Further indicators, particularly income-focused ones sourced from the Northern Ireland Family Expenditure Survey, will be incorporated in the current report in more detail as the data becomes available.

### **DEVELOPING THE INDICATORS**

There are a number of factors that impacted on the selection of indicators for the current report including: relevance; availability; reliability; robustness; and amenability to disaggregation.

The main limiting factor in the compilation of these indicators for Northern Ireland, was the absence of robust and reliable income information. Whilst the Family Resources Survey, which is used to produce the 'Households Below Average Income' series has been extended to Northern Ireland for the first time, finalised data has not yet been published. In addition one year's data is not sufficient to reflect change over time and it will be a number of years before there is a robust time series.

As a result, and where possible, indicators were originally substituted to act as a proxy for income data in the original report as the data was not available at that time. These, in the main, relate to social security benefit utilisation, which is an imperfect proxy for robust income data.

## **FUTURE DEVELOPMENTS**

Work is constantly ongoing to improve the scope of data available, and there is a commitment to improve the coverage of categories identified under Section 75 of the Northern Ireland Act 1998. The indicators will be kept under review, and as additional information becomes available, the level of analysis will be developed accordingly in future reports.

In the mid-term, a number of key developments may impact on the current set of indicators. These include: the outcome of the consultation on proposals for an Anti-Poverty Strategy for Northern Ireland; and the outcome of a range of research projects currently underway with both a direct and indirect focus on the use of statistical indicators.

It is intended to keep the current report as a ‘live’ on-line document with updates reflecting both new data and further development.