



Office of the
**First Minister and
Deputy First Minister**

www.ofmdfmi.gov.uk

GUIDANCE FOR MONITORING RACIAL EQUALITY



GUIDANCE FOR MONITORING RACIAL EQUALITY

July 2011

**For further information please contact:
Equality Directorate Research Branch
Block E
Castle Buildings
Stormont Estate
Belfast
BT4 3SR**

**Tel: (028) 90528352
Email: policysec@ofmdfmni.gov.uk**

<http://www.ofmdfmni.gov.uk/index/equality/equalityresearch/research-publications/gr-pubs.htm>

Acknowledgements

The development of this guidance was only possible through the input and support provided by the members of the Monitoring Minority Ethnic/Migrant Populations Working Group (Annex 2). The author would also like to thank the Pilot Ethnic Monitoring Working Group, NISRA Methodology Group and the Racial Equality Panel for the advice and support they provided during this process.

CONTENTS

| | |
|---|----|
| 1. Introduction | 6 |
| 2. Guidance for the monitoring framework | 10 |
| 2.1 Ethnic group | 11 |
| 2.2 Country of birth | 14 |
| 2.3 Nationality | 15 |
| 2.4 Religion | 17 |
| 2.5 Language | 19 |
| 3. Algorithm to link to the 2011 Census of Population | 21 |
| 4. Future work | 23 |
| Annex 1 | 24 |
| Annex 2 | 29 |
| Annex 3 | 31 |
| Annex 4 | 35 |
| Annex 5 | 44 |
| Annex 6 | 49 |

1. Introduction

Public bodies need robust information to monitor inequalities, develop evidence based policy and to plan service delivery. This report is the definitive monitoring guide to assist public bodies in improving service delivery and equality for minority ethnic and migrant populations living here. The guidance presents a standardised monitoring framework for the collection of data. It is based on best practice, recent developments in National Statistics guidance and the 2011 Census of Population.

The Equality Commission for Northern Ireland already provides the 'Unified Guide to Promoting Equal Opportunities in Employment' and a Monitoring Guide in connection with Section 75 of the Northern Ireland Act, both of which include monitoring advice. This report is a source of further information to inform the work of public authorities

Over the last few years the lack of available data on minority ethnic and migrant people has been recognised as a significant barrier to the full implementation of racial equality. In addition, the challenges in collecting this information have become more complex since the European Union expansion in May 2004 and the resulting influx of Eastern European migrants to Northern Ireland.

The Racial Equality Strategy 2005-2010 published by the Office of the First Minister and Deputy First Minister, states that:

'ethnic monitoring by service providers of key aspects of their services is essential to achieve racial equality. To have a racial equality policy without ethnic monitoring has been likened to aiming for good financial management without keeping financial records. A proper system of ethnic monitoring will allow services providers to:

- *Highlight possible inequalities*
- *Investigate their underlying causes and*
- *Remove any unfairness or disadvantage.'*

This monitoring guidance provides a standardised framework to help public bodies collect information in a consistent but flexible manner. The ability to benchmark monitoring data with the 2011 Census of Population results is essential and this framework enables public bodies to do so in a standardised manner.

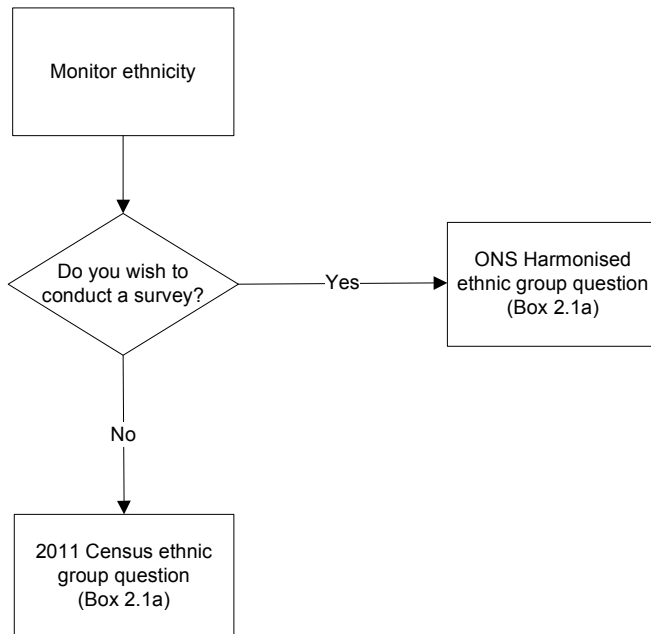
The effective implementation of any monitoring system will of course require investment in the training of staff and in explaining the reasons behind monitoring to the people who are monitored. It is unlikely to be successful if people do not understand what they are doing and why they are doing it. There will also be a need to reassure those who are monitored about the use to which any data will be put.

Diagram 1.1 summarises the monitoring framework. The specific questions and categories are described more fully in Section 2 of this report. The

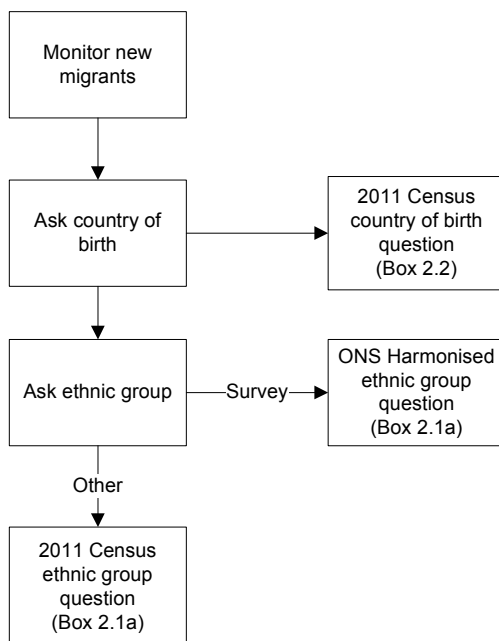
background and rationale leading to the development of the guidance can be found in Annex 1.

Diagram 1.1 Framework for Monitoring Minority Ethnic People and Migrants

To monitor the ethnicity of minority ethnic people, a question on ethnic group should be asked

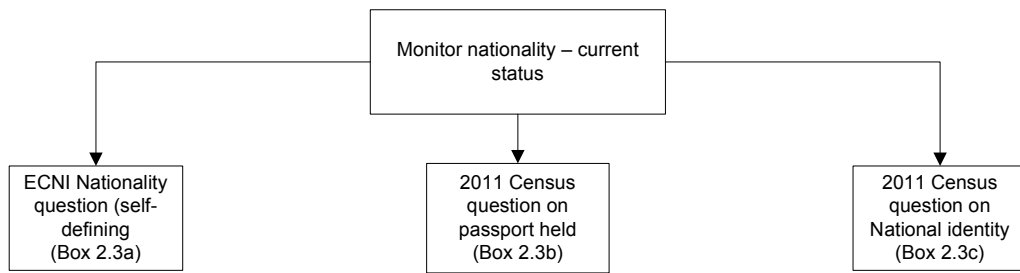


To monitor new migrants e.g. Eastern Europeans, a question on ethnic group and country of birth should be asked. Country of birth should be asked before ethnic group.

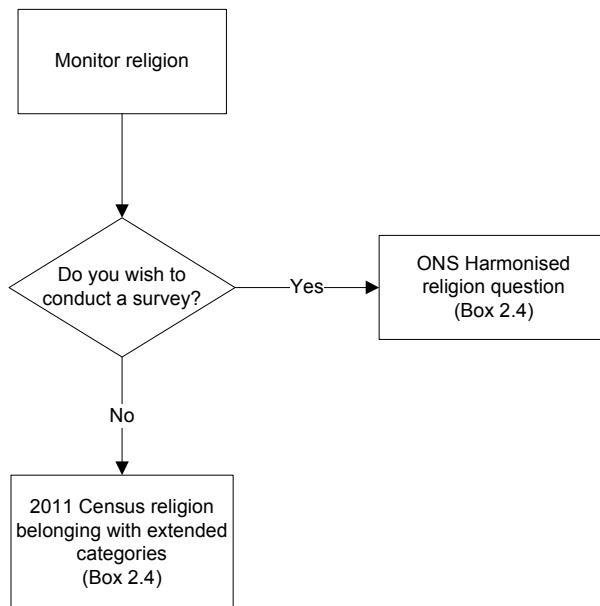


Note: If it is not practical to ask both country of birth and ethnic group, then the categories in the 2011 Census ethnic group question may be extended to include the most common nationalities (Box 2.1b)

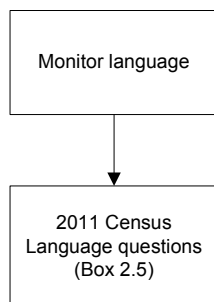
Country of birth is more robust than nationality or national identity because it does not change and there can only be one answer. However, if a public body is particularly interested in the current status of a person, a question on nationality, national identity or passport held might be helpful



To collect information on religions other than ‘Christian’ then a question on religion should be asked. The ONS Harmonised Religion question or the 2011 Census question with extended categories should be used.



To collect information on language, then the questions on language in the 2011 Census should be used



Note: The main language question is self-defining. If extended categories are required, use those in the Department of Education’s Annual School Census (Annex 7)

2. GUIDANCE FOR THE MONITORING FRAMEWORK

The monitoring framework and guidance has been based on the following principles:

- Standardised framework across all public bodies
- Flexibility built in to enable users to adapt the framework to fit their own circumstances
- Comparability with the 2011 Census of Population
- Survey questions compatible with Office for National Statistics (ONS) Ethnicity, Identity, Language and Religion Harmonisation guidance.

A person's identity is multi-faceted. A number of variables are relevant when describing identity relating to a minority ethnic or migrant person. This guidance focuses on the following variables:

- Ethnic group
- Country of birth
- Nationality
- National identity
- Religion
- Language

Using all of these variables provides a complete picture of the identity of minority ethnic people and migrants. For example, a person may have a Polish nationality and hold a Polish passport, but could have a 'black' ethnic origin, been born in Germany and speak fluent English.

It is unlikely to be feasible for public bodies to collect information to take account of all the aspects of a person's identity, but some variables may be more relevant to a specific service than others. For example, language is particularly important when planning for interpreting services or to provide assistance to newcomer pupils in school.

This section provides guidance to public bodies on the variables and associated questions and categories which can be used to collect information on minority ethnic people and migrants. This enables public bodies to select the most suitable variables, questions and categories to meet specific needs.

The questions are mainly based on the those used in the 2011 Census of Population and the ONS Ethnicity, Identity, Language and Religion Harmonisation project guidance. The answer categories for questions in the 2011 Census and ONS guidance are listed. Additional categories under each of the high level Census or ONS categories are provided to enable public bodies to expand the range of answer categories used as required.

2.1 ETHNIC GROUP

It is recommended to use the ethnic group question in the 2011 Census (Box 2.1a). However, if the question is to be included in a survey, then the question on ethnic group in the ONS EILR Harmonisation Guidance should be used. The ONS question provides a more detailed selection of categories than the Census but aggregates back up to the Census categories.

Box 2.1a Ethnic group standard question

| General recommended question | Categories | Recommended question for surveys | Categories |
|---|--|---|---|
| <p>The recommended question is:</p> <p>‘What is your ethnic group?’</p> <p><i>Source: Census of Population 2011</i></p> | <ul style="list-style-type: none"> • White • Chinese • Irish Traveller • Indian • Pakistani • Bangladeshi • Black Caribbean • Black African • Black other • Mixed ethnic group, write in • Any other ethnic group, write in <p><i>Source: Census of Population 2011</i></p> | <p>If the question is to be specifically included in a survey then recommend:</p> <p>‘What is your ethnic group? Choose one option which best describes your ethnic group or background’</p> <p><i>Source: ONS EILR Harmonisation</i></p> | <p>1.White 2.Irish Traveller</p> <p>Mixed/multiple ethnic groups 3. White and Black Caribbean 4. White and Black African 5. White and Asian 6. Any other Mixed/multiple ethnic background, <i>please describe</i></p> <p>Asian/Asian British 7. Indian 8. Pakistani 9. Bangladeshi 10. Chinese 11. Any other Asian background, <i>please describe</i></p> <p>Black/ African/ Caribbean/ Black British 12. African 13. Caribbean 14. Any other Black/African/Caribbean background, <i>please describe</i></p> <p>Other ethnic group</p> |

| | | | |
|--|--|--|---|
| | | | 15. Arab 16. Any other ethnic group, <i>please describe</i> <i>Source: ONS EILR Harmonisation</i> |
|--|--|--|---|

It is preferable not to use ethnic group to monitor new migrants such as Eastern Europeans who are likely to fall mainly under the white category. In this case, country of birth should be used in conjunction with ethnic group to allow for multivariate analysis with the ethnic group variable e.g. Black Portuguese. The country of birth question should be asked before the ethnic group question.

It may be extremely costly to introduce additional variables to large administrative systems when these are not being revised or upgraded. If ethnic group is the only variable available to a public body, an alternative option is to expand categories under 'white' to include nationalities such as Polish and Lithuanian. In the 2001 Census in England and Wales, 97.6% of Polish people identified themselves as 'White'.

On the basis of the most common nationalities prevalent in Northern Ireland, the following hierarchy for disaggregating the ethnic group question is recommended if required (Box 2.1b):

Box 2.1b Extended categories for ethnic group

| 2011 Census | Extended categories |
|-------------|---|
| White | British Irish Polish Lithuanian Slovakian Portuguese Latvian Czech Hungarian French Spanish Bulgarian Romanian German Ukrainian Dutch Italian Estonian |

| | |
|------------------------|---|
| Chinese | |
| Irish Traveller | |
| Indian | |
| Pakistani | |
| Bangladeshi | |
| Black Caribbean | |
| Black African | |
| Black other | Nigerian |
| Mixed ethnic groups | |
| Any other ethnic group | Roma Gypsy/Traveller Arab Filipino Vietnamese Japanese South American Latin American Kurdish North African Iranian Malaysian |

When to use

Examples of the use of this variable are to monitor ethnic group in relation to Section 75 of the NI Act 1998 or to identify cultural needs for service delivery (e.g. targeting health promotion messages to groups at high risk of particular diseases).

Key issues

- It is not recommended to use ethnic group to monitor religious belief e.g. Muslim, Hindu
- It is preferable not to use ethnic group to monitor new migrants such as Eastern Europeans who are likely to fall mainly under the white category
- In this case, country of birth should be used as a secondary variable to allow for multivariate analysis with the ethnic group variable e.g. Black Portuguese
- Country of birth is preferable to nationality or national identity because it is more robust as it cannot change. However, public bodies may have their own reasons for asking nationality instead
- The country of birth question should be asked before the ethnic group question

2.2 COUNTRY OF BIRTH

It is recommended to use the 2011 Census question on country of birth (Box 2.2). This provides an alternative option to Northern Ireland, England, Wales, Scotland and Republic of Ireland in the form of 'elsewhere, write in'. There are no ONS harmonised survey questions for country of birth. ONS uses country of birth to answer questions about migrant workers in the labour force (Labour Force Survey).

Box 2.2 Country of birth

| |
|--|
| 2011 Census |
| What is your country of birth? <ul style="list-style-type: none">• Northern Ireland• England• Wales• Scotland• Republic of Ireland• Elsewhere, write in the current name of country |

When to use

Country of birth is preferable to nationality as it cannot change and is therefore more robust. Country of birth provides information on the original background of the person. However, it does not necessarily provide the 'current' status of the person – a question on nationality provides this. Public bodies may have their own reasons for asking for a person's nationality instead, for example relating to their immigration status.

Key issues

- Country of birth is useful to identify new migrants, for example from Eastern Europe, who might otherwise be hidden in the 'White' category of ethnic group
- In this case, country of birth should be included as a secondary variable to allow for multivariate analysis with the ethnic group variable e.g. Black Portuguese
- The country of birth question should be asked before the ethnic group question
- There is scope to categorise under 'Elsewhere, write in' if necessary e.g. Poland, depending on local circumstances – the categories listed under 'White' in ethnic group (Box 2.1b) may be helpful.
- An alternative is to include all the countries of the world as a 'look-up' in a computerised system. The Office for National Statistics has developed the National Statistics Country Classification 2006 (last updated in February 2011). This includes a coding classification system. The classification can be found on their website:

<http://www.statistics.gov.uk/StatBase/Product.asp?vlnk=14435&Pos=&ColRank=1&Rank=272>.

It would not be practical to include such a large list in a self completion monitoring form.

2.3 NATIONALITY

It is recommended to use a self-defining question on nationality because this is more likely to provide one answer. This is the approach recommended by the Equality Commission for Northern Ireland (ECNI) in the 'Unified Guide to Promoting Equal Opportunities in Employment ECNI Monitoring Form' (Box 2.3a).

Box 2.3a Nationality

| |
|--|
| Equality Commission NI Monitoring Form |
|--|

| |
|--|
| This is asked under the 'racial group' heading before the ethnic group question. |
|--|

| |
|--------------------------------|
| Please state your nationality: |
|--------------------------------|

| |
|--------------------------|
| My nationality is: |
|--------------------------|

There are no ONS harmonised survey questions for nationality. Many surveys, such as the Labour Force Survey, use country of birth. In Great Britain, statistics on the citizenship of migrants are published by ONS using country of birth, country of last residence and the passport that the migrant is travelling on when they are interviewed by the International Passenger Survey. This survey was conducted for the first time in Northern Ireland in 2009 at Belfast International Airport.

When to use

Nationality is most helpful for determining a person's current status, compared to country of birth.

Key issues

- The ECNI question (Box 2.3a) is self-defining, so there is no recommended list of categories, however the additional categories listed in Box 2.1b may be helpful
- If more than one answer is given, public authorities will need to consider how the response will be coded

There are two other options for collecting information on nationality – questions on '*passports held*' or '*national identity*'. These are described below.

Passports held

The 2011 Census included a question on passports held (Box 2.3b) and this is the recommended question to use if required.

Box 2.3b

| |
|---|
| 2011 Census |
| What passport do you hold (tick all that apply) |
| <ul style="list-style-type: none">• United Kingdom• Ireland• Other, write in• None |

When to use

The ECNI question (Box 2.3a) is preferred to determine nationality. The algorithm in Section 3 of this guidance will enable public bodies to link monitoring statistics to the 2011 Census results on passports held if required. However, public bodies may have their own need to collect information specifically on passports held.

Key issues

- It is possible for a person to hold more than one passport so more than one response may be given.
- People might be reluctant to answer this question as they could be suspicious of the motives behind asking it.

National identity

A question on national identity is included in the 2011 Census of Population and the same question is recommended for use in surveys by the ONS Harmonisation guidance for Northern Ireland (Box 2.3c). This is the question to use if required.

2.3c National Identity

| |
|---|
| 2011 Census of Population and ONS EILR Harmonisation Guidance |
| How would you describe your national identity? Tick all that apply |
| <ul style="list-style-type: none">• British• Irish• Northern Irish• English• Scottish• Welsh• Other, write in |

When to use

This question may provide some insight on how the individual views their identity.

Key issues

- It is self defining but could lead to a very broad range of interpretations and categories and
- A person can have more than one national identity.

2.4 RELIGION

To ensure comparability with the 2011 Census, it is recommended to use the 2011 Census question on religion, with additional categories if required. In the 2011 Census question, non-Christian religions are not listed as separate categories and respondents are requested to 'write-in' any other religion. The ONS Harmonisation guidance for surveys asks a similar question but includes a more comprehensive list of other religion categories. It is recommended to expand the 'Other religion' category in the 2011 Census of Population question if additional categories are required (Box 2.4).

The ONS question should be used in surveys only. If an interviewer is asking the question, a show card should not be used – the interviewer should read the question and wait for a spontaneous response. If a response is not forthcoming, the interviewer may prompt using the categories in the box below.

Box 2.4 Religion

| General recommended question | Categories | Recommended question for surveys | Categories |
|--|--|--|--|
| <p>The recommended question is:</p> <p>What religion, religious denomination or body do you belong to?</p> <p><i>Source: 2011 Census of Population</i></p> | <ul style="list-style-type: none"> • Roman Catholic • Presbyterian Church • Church of Ireland • Methodist Church in Ireland • Other, write in • None <p><i>Source: Census of Population 2011</i></p> | <p>If the question is to be specifically included in a survey then recommend:</p> <p>What is your religion?</p> <p><i>Source: ONS EILR Harmonisation</i></p> | <ul style="list-style-type: none"> • No religion • Catholic • Presbyterian • Church of Ireland • Methodist • Baptist • Free Presbyterian • Brethren • Protestant-not specified • Christian-not specified • Buddhist |

| | | | |
|--|--|--|--|
| | <p>Other can be expanded to:</p> <ul style="list-style-type: none"> • Baptist • Free Presbyterian • Brethren • Protestant-not specified • Christian-not specified • Buddhist • Hindu • Jewish • Muslim • Sikh • Any other religion, <i>please describe</i> <p><i>Source: ONS EILR Harmonisation</i></p> | | <ul style="list-style-type: none"> • Hindu • Jewish • Muslim • Sikh • Any other religion, <i>please describe</i> <p><i>Source: ONS EILR Harmonisation</i></p> |
|--|--|--|--|

The religions (and frequency) reported in the 2001 Census of Population are detailed in Annex 5. If the categories recommended by ONS are not sufficient, public authorities may wish to include additional categories from this list (see religions listed under ‘Other religions and philosophies’) if required depending on local circumstances.

When to use

Religion is required for Section 75 monitoring purposes. It is also required by service providers such as the health service for cultural reasons in relation to the supply of appropriate services such as diet preference or blood transfusions.

Users should be mindful that this recommendation on the monitoring of religion does not impact on the requirements for employers (including public authorities) to monitor the community background of their workforces for the purposes of the Fair Employment Monitoring.

The monitoring of community background, required under the Fair Employment and Treatment (NI) Order 1998, applies to all those in, applying for, or leaving employment – including minority ethnic and migrant people.

Key issues

- Public bodies should ensure that the addition of this question does not detract from any statutory obligations to monitor community background – see the ECNI publications the ‘Unified Guide to Promoting Equal Opportunities in Employment’

<http://www.equalityni.org/archive/pdf/unifiedguideF09.pdf>

and ‘Section 75 Monitoring Guidance for use by Public Authorities’

<http://www.equalityni.org/archive/pdf/S75MonitoringGuidance0707.pdf>

2.5 LANGUAGE

The 2011 Census questions on language are recommended (Box 2.5). Two questions were asked in the 2011 Census relating to language. The first question asks the respondent to indicate if their main language is English and if not, then the main language is self-defined.

Box 2.5 Language

| General recommended question | Categories |
|---|--|
| What is your main language? <i>Source: 2011 Census of Population</i> | <ul style="list-style-type: none">• English• Other, write in |
| How well can you speak English? <i>Source: 2011 Census of Population</i> | <ul style="list-style-type: none">• Very well• Well• Not well• Not at all |

ONS will be developing harmonised guidance for a survey question on language, but this work is not due to commence until spring 2011. The Department of Education in Northern Ireland includes a question on language in the Annual School Census. A list of languages is provided based on the composition of languages spoken in schools (Annex 6). This will be indicative of languages spoken across Northern Ireland in general. If public authorities wish to use specific categories, then this optional list is recommended.

When to use

Language determines interpreter/translation requirements for service providers. A useful question might seek to establish the language the respondent would be most comfortable/competent in using when interacting with service providers e.g. doctors.

Education providers need to know which language children speak in order to target resources. This can be helpful when establishing the nationality of a recent migrant as it is likely the main language they speak will be the same as their nationality.

Key issues

- Language may be a useful question for children, who may otherwise find nationality or parent's nationality difficult to determine.

3. ALGORITHM TO LINK TO THE 2011 CENSUS OF POPULATION

The 2011 Census of Population contained a more comprehensive set of questions on minority ethnic and migrant people than was asked in 2001. It is unlikely to be feasible for public bodies to replicate all of these questions in a survey or administrative system. An algorithm has been developed to enable users to link statistics on country of birth or ethnic group to other variables in the Census such as passport held or language. This will maximise the potential of the new Census questions to provide supplementary information for public bodies linked to their own monitoring data.

The algorithm cannot be fully developed until the results from the 2011 Census are available. The Census Office has agreed to provide the relevant data to facilitate the development of this algorithm.

Examples of how the algorithms could work are provided below. In the case of Algorithm 1, a number of respondents to a survey may complete their '*country of birth*' as 'Poland'. Questions on '*language*', '*passport held*' or the '*date of last taking up residence*' in Northern Ireland were not included on the survey, but were asked in the 2011 Census. If the Census results show that 80% of people born in Poland also say their main language is Polish, then we can apply this proportion to respondents to the survey results. Similarly, it would also be possible to estimate the likelihood that survey respondents born in Poland had been living in Northern Ireland since before May 2004, or that the passport they hold is Polish.

Algorithm 2 provides a link between country of birth (when this is the only information collected in a survey) and ethnic group and passport held. If the Census results show that 95% of people born in Poland also report their ethnic group to be 'White', then this proportion can be applied to respondents in the survey.

Additional algorithms will be developed when the Census results become available.

Algorithm 1: LINKING COUNTRY OF BIRTH TO LANGUAGE, PASSPORT, DATE OF ARRIVAL

For example: Polish (or other Eastern European)

| PRIMARY CENSUS VARIABLE (not available in Surveys) | SECONDARY CENSUS VARIABLE (not available in Surveys) | TERTIARY CENSUS VARIABLE (can be linked to Surveys) | FINAL CENSUS VARIABLE |
|--|---|---|-----------------------|
| PASSPORT HELD (Q14) Polish | WHAT MONTH AND YEAR DID YOU LAST TAKE UP RESIDENCE IN NORTHERN IRELAND? (Q10) | COUNTRY OF BIRTH (Q7) | MAIN LANGUAGE (Q19) |
| | | On/After May 2004 | Poland |
| | | Other | Polish Other |
| | Before May 2004 | Poland | Polish Other |
| | | Other | Polish Other |

Algorithm 2: LINKING COUNTRY OF BIRTH TO ETHNIC GROUP AND PASSPORT

Eg. Asian, Black Portuguese, Arab, Roma, Black British, Somali, Filipino

| PRIMARY CENSUS VARIABLE (not available in Surveys) | SECONDARY CENSUS VARIABLE (not available in Surveys) | TERTIARY CENSUS VARIABLE (can be linked to Surveys) |
|--|--|---|
| ETHNIC GROUP (Q16) | PASSPORT (Q14) | COUNTRY OF BIRTH (Q7) |

4. FUTURE WORK

This guidance will be reviewed and updated when the work of the Pilot Ethnic Monitoring Group is completed. Further developments on the ONS Harmonisation Guidance, particularly in relation to the language question, will also be incorporated.

BACKGROUND AND RATIONALE TO THE DEVELOPMENT OF THE GUIDANCE

Background

There are a number of reasons why public bodies need to collect information on minority ethnic/migrant people. These include:

- Equality monitoring
- Identifying cultural needs in service delivery
- Uptake of services
- Interpreter requirements
- Support for pupils whose first language is not English
- Targeting resources

The vast majority of information available at present is from the 2001 Census of Population, which is now ten years old. The Northern Ireland Statistics and Research Agency (NISRA) publish an annual report on long-term migration which provides statistics on the number of migrants from A8 countries. There are a number of potential methods for collecting information on minority ethnic people which include recording information on administrative systems, collecting information via population surveys (which is problematic because the relative population size is small) and via user satisfaction surveys. The 2011 Census of Population provided a full picture of the size and characteristics of the minority ethnic and migrant populations living here.

The Office of the First Minister and Deputy First Minister (OFMDFM) monitors a set of 'Good Relations Indicators' annually and publishes updates on its website: http://www.ofmdfmi.gov.uk/good_relations_indicators_-_2010_update.pdf

These indicators provide a snapshot of good relations here, including the measurement of racial equality. In developing the indicators, the lack of data available on minority ethnic people and migrants living here was recognised. An improvement in monitoring systems through a standardised framework will enhance data sources to improve the depth and breadth of available data.

Guidance published by the Commission for Racial Equality¹ recommends that personal data should be '*adequate, relevant and not excessive*' for the purposes for which they are processed.

The guide also recognises that the '*ethnic minority population is not evenly distributed across regions and countries and you may want to adapt your ethnic classification system to your particular circumstances so that it includes the particular ethnic groups you employ or serve.*'

¹ Commission for Racial Equality (2002) *Ethnic Monitoring A Guide for Public Authorities*.

The guidance also recommends that ethnic data must be comparable with census output data and ethnic questions must be widely acceptable.

Lafleche (2009)², notes that a standardised framework is essential:

- Incrementally/organically developed monitoring frameworks are not fit for purpose
- Data items need to work with national statistics categories i.e. census categories – so they can be appropriately aggregated and disaggregated as needed
- A framework needs to offer flexibility for adaptation (i.e. extended codes) for different service providers and different local contexts without diluting the minimum data requirements.

The guidance presented in this report details a monitoring framework for public bodies to use to provide a standardised approach to collecting information on minority ethnic/migrant people. The framework is designed to provide a standardised approach, but is flexible so it can be adapted to fit local needs or circumstances.

The decision to use specific variables contained in the framework will depend on a number of factors including local population diversity, the purpose for collecting the data and the limitations of existing administrative systems or data collection tools. The framework is designed to be comparable with relevant questions in the 2011 Census to enable benchmarking. The questions presented in the framework link to the 2011 Census questions, Office for National Statistics (ONS) Harmonisation Guidance and other guidance from bodies such as the Equality Commission (ECNI).

Additional categories are presented to enable users to expand questions and disaggregate responses depending on specific need. These additional categories are presented in a manner which enables the user to aggregate responses back up to higher level Census or National Statistics categories.

In some cases, the cost to a public body of introducing new variables to a large administrative system could be prohibitive. The guidance provides alternative options for collecting data to accommodate this problem. This provides additional flexibility for public bodies while ensuring a standardised approach is maintained.

An example of this is the option to incorporate nationality within ethnic group where ethnic group is the only data currently collected (Box 2.1b)

To determine the additional categories that may be required, the most common nationalities and ethnic groups which have resided in Northern Ireland in recent years were identified by analysing data from:

- National Insurance number applications by nationality (April 2004 – March 2010)

² Michelynn Lafleche (2009) Ethnic Monitoring: Data Sources and Practices from GB. Paper prepared for the Northern Ireland Council for Ethnic Minorities.

- Health card registrations from non-UK nationals by country of birth (2006-2008)
- NI Worker Registration Scheme registrations by nationality (May 2004-March 2010)
- 2001 Census of Population – respondents stating other ethnic group

The most recent statistics from these sources by nationality or ethnicity can be found in Annex 3. These show that if additional categories are required under 'White' these should be derived from the following nationalities: Polish, Lithuanian, Slovakian, Latvian, Portuguese, Czech Republic, French, Spanish, Bulgarian, Romanian, Ukrainian, German, Italian, Dutch and Estonian. The first four nationalities are the most common in Northern Ireland.

Each additional category was grouped under the relevant Census high level category. The appropriate grouping was determined by examining extended ethnicity codes used by other organisations. Specifically these were the Department of Children, Schools and Families (DCSF) approved extended ethnicity codes in the pupil level annual School Census, National Health Service (NHS) optional detailed ethnic classifications (*A Practical Guide to Ethnic Monitoring in the NHS and Social Care 2005*) and also the Northern Ireland Council for Ethnic Minorities (NICEM) monitoring form. A full list of the categories used by these organisations is given in Annex 4.

On the basis of the most common categories prevalent in Northern Ireland, the hierarchy for disaggregating the ethnic group question is provided in Box 2.1b in the main body of the report.

Relevant working groups and developments

The '**Monitoring Minority Ethnic/Migrant Populations Working Group**' (**MMPWG**) was set up to develop the monitoring framework and guidance contained in this report. The group is chaired by a statistician in OFMDFM and comprises statistical and policy representatives from across government departments. The Equality Commission and the Health and Social Care Board are also represented on the group. A full membership list can be found in Annex 2.

A number of other pieces of work have been underway while the guidance was being developed by the working group. These have informed the monitoring framework and are detailed below:

1. **2011 Census of Population.** The Census took place on 27 March 2011. The Census questionnaire was signed off by the NI Assembly on 26 July 2010 as part of the Census regulations legislative process. A copy of the questionnaire is available online:

<http://www.nisra.gov.uk/Census/2011%20Census/2011%20Census%20Planning/Questionnaires.html>.

A number of questions in the Census are relevant to the issue of ethnicity and identity and these are:

- Country of Birth
- Passports held
- National identity
- Last country of residence, when arrived in UK, intended length of stay
- Ethnic group
- Religion belonging
- Religion brought up in
- Main language – speak English well or very well

These questions are incorporated into the monitoring framework.

2. **The Office for National Statistics (ONS) Ethnicity, Identity, Language and Religion Harmonisation Project.** The aim of this project was to develop harmonised survey questions on ethnic group, national identity, language and religion to ensure compatibility across England, Wales, Scotland and Northern Ireland and for Great Britain and the United Kingdom (UK) as a whole. In some cases, country specific questions were developed to accommodate different country requirements. The chair and the Central Survey Unit representative of the MMPWG were members of this group (a full membership list can be found in Annex 2). The ONS guidance facilitates aggregation of data at UK (and GB) level in terms of outputs. The guidance for ethnic group, national identity and religion is due to be published shortly - the questions recommended in the ONS guidance for Northern Ireland should be used for surveys conducted here. The project will continue in 2011 with work commencing on developing standards for survey questions on language. The language questions in this guidance will be reviewed in light of emerging ONS recommendations.
3. **Pilot ethnic monitoring project.** The aim of this project is to pilot the development of common ethnic monitoring information routinely available on a variety of health and social care administrative systems in Northern Ireland. The project has been working in partnership with OFMDFM to develop a regional common data framework to monitor minority ethnic and migrant people in Northern Ireland, ensuring it is flexible but comparable to the 2011 Census of population. The project will share learning from the pilot with OFMDFM. The chair of the

MMPWG sits on the pilot project group (full membership of the group can be found in Annex 2) and the chair of the Pilot Ethnic Monitoring Project sits on the MMPWG.

4. **Northern Ireland Statistics and Research Agency (NISRA) Methodology Group.** The MMPWG reports to the NISRA Methodology Group (see Annex 2 for membership list). One of the aims of the methodology group is to develop and/or endorse central NISRA guidance on specific common statistical and research methodologies. The chair of the MMPWG sits on the NISRA Methodology Group and the group endorsed this guidance in March 2011.

The MMPWG decided that the monitoring framework and guidance could not be produced until the questions in the 2011 Census were finalised and the ONS Harmonisation Guidance had been prepared. Given the 2011 Census questions are now available and the ONS Harmonisation Guidance is due to be published shortly it has been possible to draft the guidance contained in this report. The work of the Pilot Ethnic Monitoring Project will continue and any learning from this will be reflected in a revision to this guidance.

MEMBERSHIP OF RELEVANT GROUPS

Monitoring Minority Ethnic/Migrant People Working Group

Pauline Donnan, OFMDFM (Chair)
Carol Murphy, OFMDFM (Secretariat)
Ken Fraser, OFMDFM
Patricia Wyers, DE
Christine Bowden, DE
Sharon Lawlor, DE
Kevin Sweeney/Michael MacNeill, Central Survey Unit - DFP
Seamus McMullan, ECNI
Ashleigh Warwick/Helen Irwin, Census Office - DFP
Christine Kennedy, DHSSPS
Heather Robinson/Walter Stafford, DHSSPS
Dave Rogers, DEL
June Ingram, DEL
Valerie Maxwell, Health and Social Care Board
Claire Savage, DSD
Orla Bateson, DCAL

ONS Ethnicity, Identity, Language and Religion Harmonisation Project Sub-Group

The sub-group was formed with representation from the following organisations:

- NISRA (& Office of the First Minister and Deputy First Minister)
- Scottish Government
- Welsh Assembly Government
- Equality and Human Rights Commission
- Data Standards Working Group/ Department for Work and Pensions
- The Department for Education
- National Health Service (Connecting for Health)
- University of Essex (Academic support)

Pilot ethnic monitoring project

Valerie Maxwell, Social Care Information, HSCB, Southern Area (Chair)
Veronica McEaney, Belfast HSC Trust
Fiona Dunbar- HSCB- PMSID
Nicola Fisher- Community Information Branch DHSSPS
Christine Kennedy, Hospital Information, DHSSPS
Elaine O'Doherty- PHA
Maureen Jamison, Health Visiting Team, SE Trust
Lynda Gordon, Equality Assurance Unit, SHSCT
Valerie Doyle, Child Health System, SHSCT
Patrick Yu, NICEM

Pauline Donnan, OFMDFM

NISRA Methodology Group

Tracy Power, Corporate Branch, DFP (Chair)

Stephanie Harcourt, DETI

Kevin Sweeney, Central Survey Unit, DFP

Robert Beatty, Census Office, DFP

Michelle Furphy, Regional Reporting and EU Programmes Branch, DFP

Ivor Johnston, HR Consultancy Services, DFP

Janis Scallon, DSD

Pauline Donnan, OFMDFM

Table 1: National Insurance Number (NINo) Applications by Nationality (April 2003 - March 2010)

| Nationality | NINO Applications (Apr 2003 - Mar 2004) | NINO Applications (Apr 2004 - Mar 2005) | NINO Applications (Apr 2005 - Mar 2006) | NINO Applications (Apr 2006 - Mar 2007) | NINO Applications (Apr 2007 - Mar 2008) | NINO Applications (Apr 2008 - Mar 2009) | NINO Applications (Apr 2009 - Mar 2010) | Total |
|---------------|--|--|--|--|--|--|--|--------|
| Polish | 230 | 3,482 | 8,512 | 9,937 | 10,278 | 5,236 | 2,553 | 40,228 |
| Irish | 2,162 | 2,395 | 1,092 | 2,074 | 2,354 | 2,565 | 2,721 | 15,363 |
| Lithuanian | 93 | 1,999 | 2,553 | 2,465 | 1,954 | 1,555 | 1,431 | 12,050 |
| Slovak | 38 | 958 | 2,078 | 2,193 | 2,285 | 1,240 | 471 | 9,263 |
| Portuguese | 1,167 | 967 | 496 | 471 | 517 | 695 | 391 | 4,704 |
| Indian | 645 | 858 | 452 | 477 | 487 | 524 | 354 | 3,797 |
| Latvian | 39 | 545 | 707 | 597 | 523 | 542 | 757 | 3,710 |
| Czech | 21 | 557 | 665 | 525 | 451 | 268 | 160 | 2,647 |
| Chinese | 303 | 416 | 290 | 351 | 479 | 484 | 351 | 2,674 |
| Filipino | 395 | 400 | 350 | 381 | 285 | 266 | 168 | 2,245 |
| Hungarian | 7 | 86 | 180 | 365 | 648 | 530 | 315 | 2,131 |
| British | 254 | 232 | 199 | 211 | 271 | 377 | 291 | 1,835 |
| French | 157 | 251 | 163 | 266 | 260 | 287 | 207 | 1,591 |
| Australian | 184 | 260 | 226 | 210 | 220 | 181 | 113 | 1,394 |
| American | 122 | 227 | 122 | 176 | 232 | 240 | 170 | 1,289 |
| Spanish | 172 | 187 | 161 | 164 | 213 | 221 | 209 | 1,327 |
| Bulgarian | 148 | 118 | 67 | 69 | 245 | 441 | 220 | 1,308 |
| Romanian | 60 | 120 | 49 | 174 | 218 | 367 | 561 | 1,549 |
| German | 119 | 185 | 138 | 171 | 212 | 155 | 117 | 1,097 |
| Ukrainian | 219 | 281 | 118 | 235 | 76 | 27 | 17 | 973 |
| South African | 187 | 223 | 161 | 118 | 105 | 104 | 53 | 951 |
| Canadian | 99 | 128 | 95 | 116 | 112 | 113 | 62 | 725 |
| Italian | 72 | 121 | 98 | 102 | 139 | 111 | 112 | 755 |

| | | | | | | | | |
|----------------------------|--------------|---------------|---------------|---------------|---------------|---------------|---------------|----------------|
| New Zealander | 73 | 80 | 74 | 67 | 77 | 85 | 43 | 499 |
| Dutch | 34 | 82 | 75 | 47 | 80 | 60 | 66 | 444 |
| Malaysian | 75 | 26 | 85 | 41 | 90 | 54 | 55 | 426 |
| Nigerian | 52 | 62 | 40 | 43 | 61 | 76 | 126 | 460 |
| Pakistani | 43 | 81 | 47 | 39 | 45 | 54 | 66 | 375 |
| Brazilian | 38 | 69 | 41 | 47 | 39 | 70 | 35 | 339 |
| Iranian | 4 | 4 | 7 | 54 | 35 | 76 | 47 | 227 |
| Unknown | - | - | 23 | 53 | 293 | 55 | 26 | 450 |
| All Other Countries | 593 | 879 | 757 | 832 | 813 | 789 | 736 | 5,399 |
| Total | 7,805 | 16,279 | 20,121 | 23,071 | 24,097 | 17,848 | 13,004 | 122,225 |

Source: Department for Social Development (July 2010), NISSA (July 2010)

Table 2: NI Worker Registration Scheme (WRS) Registrations by Nationality (May 2004 - March 2010)

| Nationality | NI WRS Count (May 2004 - Mar 2005) | NI WRS Count (Apr 2005 - Mar 2006) | NI WRS Count (Apr 2006 - Mar 2007) | NI WRS Count (Apr 2007 - Mar 2008) | NI WRS Count (Apr 2008 - Mar 2009) | NI WRS Count (Apr 2009 - Mar 2010) | Total |
|-----------------------|---|---|---|---|---|---|---------------|
| Czech Republic | 390 | 390 | 305 | 290 | 150 | 55 | 1,580 |
| Estonia | 20 | 40 | 15 | 5 | - | 20 | 100 |
| Hungary | 80 | 110 | 210 | 245 | 210 | 160 | 1,015 |
| Latvia | 430 | 470 | 360 | 235 | 255 | 375 | 2,125 |
| Lithuania | 1,545 | 1,735 | 1,485 | 1,100 | 765 | 700 | 7,330 |
| Poland | 2,150 | 4,980 | 5,660 | 5,055 | 2,775 | 1,465 | 22,085 |
| Slovakia | 875 | 1,315 | 1,230 | 985 | 665 | 305 | 5,375 |
| Slovenia | 5 | - | - | - | - | - | 5 |
| Total | 5,495 | 9,045 | 9,270 | 7,900 | 4,815 | 3,090 | 39,615 |

Source: Home Office: Immigration and Nationality Directorate (August 2010)

Table 3: 2001 Census of Population: respondents with other ethnic group.

| | |
|----------------------|-------------|
| Any other group | 418 |
| Filipino | 207 |
| Arab | 167 |
| Malaysian | 112 |
| Japanese | 85 |
| Iranian | 61 |
| North African | 57 |
| Latin American | 41 |
| Other Middle Eastern | 39 |
| Vietnamese | 32 |
| South American | 23 |
| Jewish | 20 |
| Multi-ethnic islands | 15 |
| Kurdish | 13 |
| Total | 1290 |

Additional categories recommended by the Northern Ireland Council for Ethnic Minorities (NICEM), the Department for Children Schools and Families (DCSF) and the National Health Service (NHS)

1. NICEM Monitoring Form - ethnic group question

Q: Your ethnic group (in alphabetical order)

3.1.1 Asian, Asian British, Asian English, Asian Irish

| | |
|--|--|
| Bangladeshi | |
| Indian | |
| Pakistani | |
| Any other Asian background (specify if you wish) | |

3.1.2 Black, Black British, Black English, Black Irish, Black Portuguese, Black American

| | |
|--|--|
| African | |
| Caribbean | |
| Any other Black background (specify if you wish) | |

3.1.3 Chinese, Chinese British, Chinese English, Chinese Irish

| | |
|--------------------------------------|--|
| Chinese (Hong Kong & Macau) | |
| Chinese (Mainland China) | |
| Chinese others (specify if you wish) | |

3.1.4 Mixed

| | |
|--|--|
| White and Asian | |
| White and Black African | |
| White and Black Caribbean | |
| White and Chinese | |
| Any other Mixed background (specify if you wish) | |

Other Ethnic Background

| | |
|---|--|
| Filipino | |
| Irish Travellers | |
| Gypsy | |
| Roma | |
| Any other ethnic background (specify if you wish) | |

3.1.5 White

| | |
|--|--|
| British | |
| English | |
| Irish | |
| Lithuanian | |
| Polish | |
| Portuguese | |
| Scottish | |
| Welsh | |
| Any other White background (specify if you wish) | |

2. Department for Children, Schools and Families

| Approved Extended Categories | Sub- Category | Main Category | Further Comments |
|------------------------------|-----------------------------|---------------|---|
| White - British | White - British | White | Main code (WBR) may not be used if any of the extended categories below (WCBR-WWEL) are used. |
| White - Cornish | White - British | White | |
| White - English | White - British | White | |
| White - Scottish | White - British | White | |
| White - Welsh | White - British | White | |
| Other White British | White - British | White | If LAs collect information for "White - British" pupils using any of the extended categories above (WCBR-WWEL), this category must be used as a catch all for all other White pupils within the main "White - British" category. If used, cannot have category "White - British" (WBR). |
| White - Irish | White - Irish | White | |
| Traveller of Irish Heritage | Traveller of Irish Heritage | White | |
| Any Other White Background | Any Other White Background | White | Main code (WO1H) may not be used if any of the extended categories below (WALB-WWEL) are used. |
| Albanian | Any Other White Background | White | Excluding Kosovan. |
| Bosnian-Herzegovinian | Any Other White Background | White | |
| Croatian | Any Other White Background | White | |
| Greek/ Greek Cypriot | Any Other White Background | White | If LAs do not wish to distinguish between pupils of Greek and Greek Cypriot heritage they may place all Greek/ Greek Cypriot in this category. If used, cannot have categories "Greek" (WGRK) or "Greek Cypriot" (WGRC). |
| Greek | Any Other White Background | White | If used, cannot have category "Greek/ Greek Cypriot" (WGRE). If used, must also have category "Greek Cypriot" (WGRC). |
| Greek Cypriot | Any Other White Background | White | If used, cannot have category "Greek/ Greek Cypriot" (WGRE). If used, must also have category "Greek" (WGRK). |
| Italian | Any Other White Background | White | |
| Kosovan | Any Other White Background | White | |
| Portuguese | Any Other White | White | |

| | Background | | |
|--------------------------------------|----------------------------|-------------------------|---|
| Serbian | Any Other White Background | White | |
| Turkish/ Turkish Cypriot | Any Other White Background | White | If LAs do not wish to distinguish between pupils of Turkish and Turkish Cypriot heritage they may place all Turkish/ Turkish Cypriot in this category. If used, cannot have categories "Turkish" (WTUK) or "Turkish Cypriot" (WTUC). |
| Turkish | Any Other White Background | White | If used, cannot have category "Turkish/ Turkish Cypriot" (WTUR). If used, must also have category "Turkish Cypriot" (WTUC). |
| Turkish Cypriot | Any Other White Background | White | If used, cannot have category "Turkish/ Turkish Cypriot" (WTUR). If used, must also have category "Turkish" (WTUK). |
| White European | Any Other White Background | White | If LAs do not collect information on White European pupils on the basis of country of origin or East/ West European, they may place all White European pupils here. |
| White Eastern European | Any Other White Background | White | Including Russian, Latvian, Ukrainian, Polish, Bulgarian, Czech, Slovak, Lithuanian, Montenegrin and Romanian. |
| White Western European | Any Other White Background | White | Including Italian, French, German, Spanish, Portuguese and Scandinavian. |
| White Other | Any Other White Background | White | If LAs collect information for "Any Other White Background" pupils using any of the extended categories above (WALB-WWEL), this category must be used as a catch all for all other White pupils within the main "Any Other White Background" category. If used, cannot have category "Any Other White Background" (WOTH). |
| Gypsy / Roma | Gypsy / Roma | White | This category includes pupils who identify themselves as Gypsies and or Romanies, and or Travellers, and or Traditional Travellers, and or Romanichals, and or Romanian Gypsies and or Welsh Gypsies / Kaale, and or Scottish Travellers / Gypsies, and or Roma. It includes all children of a Gypsy ethnic background or Roma ethnic background, irrespective of whether they are nomadic, semi nomadic or living in static accommodation. It should not include Fairground (Showman's) children; the children travelling with circuses; or the children of New Travellers or Bargees unless, of course, their ethnic status is that which is mentioned above. |
| White and Black Caribbean | White and Black Caribbean | Mixed / Dual Background | |
| White and Black African | White and Black African | Mixed / Dual Background | |
| White and Asian | White and Asian | Mixed / Dual Background | Main code (MWAS) may not be used if any of the extended categories below (MWAP-MWAI) are used. |
| White and Pakistani | White and Asian | Mixed / Dual Background | |
| White and Indian | White and Asian | Mixed / Dual Background | |
| White and Any Other Asian Background | White and Asian | Mixed / Dual Background | If LAs collect information for "White and Asian" pupils using any of the extended categories above (MWAP-MWAI), this category must be used as a catch all for all other Mixed/Dual Background pupils within the main "White and Asian" category. If used, cannot have category "White and Asian" (MWAS). |
| Any Other Mixed Background | Any Other Mixed Background | Mixed / Dual Background | Main code (MOTH) may not be used if any of the extended categories below (MAOE-MWCH) are used. |
| Asian and Any Other Ethnic Group | Any Other Mixed Background | Mixed / Dual Background | |

| | | | |
|------------------------------------|----------------------------|-------------------------|---|
| Asian and Black | Any Other Mixed Background | Mixed / Dual Background | |
| Asian and Chinese | Any Other Mixed Background | Mixed / Dual Background | |
| Black and Any Other Ethnic Group | Any Other Mixed Background | Mixed / Dual Background | |
| Black and Chinese | Any Other Mixed Background | Mixed / Dual Background | |
| Chinese and Any Other Ethnic Group | Any Other Mixed Background | Mixed / Dual Background | |
| White and Any Other Ethnic Group | Any Other Mixed Background | Mixed / Dual Background | |
| White and Chinese | Any Other Mixed Background | Mixed / Dual Background | |
| Other Mixed Background | Any Other Mixed Background | Mixed / Dual Background | If LAs collect information for "Any Other Mixed Background" pupils using any of the extended categories above (MAOE-MWCH), this category must be used as a catch all for all other Mixed/Dual Background pupils within the main "Any Other Mixed Background" category. If used, cannot have category "Any Other Mixed Background" (MOTH). |
| Indian | Indian | Asian or Asian British | |
| Pakistani | Pakistani | Asian or Asian British | Main code (APKN) may not be used if any of the extended categories below (AMPK-APKA) are used. |
| Mirpuri Pakistani | Pakistani | Asian or Asian British | |
| Kashmiri Pakistani | Pakistani | Asian or Asian British | |
| Other Pakistani | Pakistani | Asian or Asian British | If LAs collect information for "Pakistani" pupils using any of the extended categories above (AMPK-APKA), this category must be used as a catch all for all other Pakistani pupils within the main "Pakistani" category. If used, cannot have category "Pakistani" (APKN). |
| Bangladeshi | Bangladeshi | Asian or Asian British | |
| Any Other Asian Background | Any Other Asian Background | Asian or Asian British | Main code (AOTH) may not be used if any of the extended categories below (AAMR-ASRO) are used. |
| African Asian | Any Other Asian Background | Asian or Asian British | Including East and South African Asians. |
| Kashmiri Other | Any Other Asian Background | Asian or Asian British | Kashmiri respondents not wishing to be classified under Asian Pakistani should use this category. |
| Nepali | Any Other Asian Background | Asian or Asian British | |
| Sri Lankan Sinhalese | Any Other Asian Background | Asian or Asian British | All other Sinhalese pupils should be placed wherever appropriate in the categories above. If used MUST also have categories "Sri Lankan Tamil" (ASLT) and "Sri Lankan Other" (ASRO). |

| | | | |
|----------------------------|----------------------------|------------------------|--|
| Sri Lankan Tamil | Any Other Asian Background | Asian or Asian British | All other Tamil pupils should be placed wherever appropriate in the categories above. If used MUST also have categories 'Sri Lankan Sinhalese' (ASNL) and 'Sri Lankan Other' (ASRO). |
| Sri Lankan Other | Any Other Asian Background | Asian or Asian British | If used MUST also have categories 'Sri Lankan Sinhalese' (ASNL) and 'Sri Lankan Tamil' (ASLT). |
| Other Asian | Any Other Asian Background | Asian or Asian British | If LAOs collect information for 'Any Other Asian Background' pupils using any of the extended categories above (JAAPR-ASRC), this category must be used as a catch all for all other Asian pupils within the main 'Any Other Asian Background' category. If used, cannot have category 'Any Other Asian Background' (AOTH). |
| Black Caribbean | Black Caribbean | Black or Black British | Including Antigua and Barbuda, Bahamas, Barbados, Dominica, Grenada, Guyana, Jamaica, St Kitts and Nevis, St Lucia, St Vincent & Grenadines, Trinidad and Tobago. |
| Black - African | Black - African | Black or Black British | Main code (BAFR) may not be used if any of the extended categories below (BANN-BNAD) are used. |
| Black - Angolan | Black - African | Black or Black British | |
| Black - Congolese | Black - African | Black or Black British | |
| Black - Ghanaian | Black - African | Black or Black British | |
| Black - Nigerian | Black - African | Black or Black British | |
| Black - Sierra Leonean | Black - African | Black or Black British | |
| Black - Somali | Black - African | Black or Black British | |
| Black - Sudanese | Black - African | Black or Black British | Including Sudanese of Egyptian origin. |
| Other Black African | Black - African | Black or Black British | Including Black South African, Zimbabwean, Ethiopian, Rwandan and Ugandan. If LAOs collect information for 'Black - African' pupils using any of the extended categories above (BANN-BNAD), this category must be used as a catch all for all other Black African pupils within the main 'Black - African' category. If used, cannot have category 'Black - African' (BAFR). |
| Any Other Black Background | Any Other Black Background | Black or Black British | Main code (BOTH) may not be used if any of the extended categories below (BEUR-BNAM) are used. |
| Black European | Any Other Black Background | Black or Black British | |
| Black North American | Any Other Black Background | Black or Black British | Includes Black North American and Canadian. |
| Other Black | Any Other Black Background | Black or Black British | If LAOs collect information for 'Any Other Black Background' pupils using any of the extended categories above (BEUR-BNAM), this category must be used as a catch all for all other Black pupils within the main 'Any Other Black Background' category. If used, cannot have category 'Any Other Black Background' (BOTH). |
| Chinese | Chinese | Chinese | Main code (CHNE) may not be used if any of the extended categories below (CHNC-CTWN) are used. |
| Hong Kong Chinese | Chinese | Chinese | |

| | | | |
|--------------------------------|-------------------------------|-------------------------------|---|
| Malaysian Chinese | Chinese | Chinese | |
| Singaporean Chinese | Chinese | Chinese | |
| Taiwanese | Chinese | Chinese | |
| Other Chinese | Chinese | Chinese | If LAs collect information for "Chinese" pupils using any of the extended categories above (CHIC-CTWN), this category must be used as a catch all for all other Chinese pupils within the main "Chinese" category. If used, cannot have category "Chinese" (CHNE). |
| Any Other Ethnic Group | Any Other Ethnic Group | Any Other Ethnic Group | Main code (OOTH) may not be used if any of the extended categories below (OAFG-OYEM) are used. |
| Alghan | Any Other Ethnic Group | Any Other Ethnic Group | |
| Arab Other | Any Other Ethnic Group | Any Other Ethnic Group | Include Palestinian, Kuwaiti, Jordanian and Saudi Arabian. |
| Egyptian | Any Other Ethnic Group | Any Other Ethnic Group | |
| Filipino | Any Other Ethnic Group | Any Other Ethnic Group | |
| Iranian | Any Other Ethnic Group | Any Other Ethnic Group | |
| Iraqi | Any Other Ethnic Group | Any Other Ethnic Group | |
| Japanese | Any Other Ethnic Group | Any Other Ethnic Group | |
| Korean | Any Other Ethnic Group | Any Other Ethnic Group | |
| Kurdish | Any Other Ethnic Group | Any Other Ethnic Group | Include Kurdish pupils from Iraq, Iran and Turkey. |
| Latin/ South/ Central American | Any Other Ethnic Group | Any Other Ethnic Group | Include all pupils from Central South America, Cuba and Belize. |
| Lebanese | Any Other Ethnic Group | Any Other Ethnic Group | |
| Libyan | Any Other Ethnic Group | Any Other Ethnic Group | |
| Malay | Any Other Ethnic Group | Any Other Ethnic Group | Including Malaysian other than Malaysian Chinese. |
| Moroccan | Any Other Ethnic Group | Any Other Ethnic Group | |
| Polynesian | Any Other Ethnic Group | Any Other Ethnic Group | Including Fijian, Tongan, Samoan and Tahitian. |
| Thai | Any Other Ethnic Group | Any Other Ethnic Group | |

| | | | |
|-------------------------------------|-------------------------------------|-------------------------------------|--|
| Vietnamese | Any Other Ethnic Group | Any Other Ethnic Group | |
| Yemeni | Any Other Ethnic Group | Any Other Ethnic Group | |
| Other Ethnic Group | Any Other Ethnic Group | Any Other Ethnic Group | If LAs collect information for "Any Other Ethnic Group" pupils using any of the extended categories above (OAFG-OYEM), this category must be used as a catch all for all other pupils within the main "Any Other Ethnic Group" category. If used, cannot have category "Any Other Ethnic Group" (OOTH). |
| Refused | Refused | Refused | |
| Information Not Yet Obtained | Information Not Yet Obtained | Information Not Yet Obtained | |

3. Optional detailed framework for the NHS/Department of Health

| | |
|--|--|
| <p>White Group</p> <p><i>British or mixed British</i></p> <p><i>Irish</i></p> <p><i>Other White background</i></p> <ol style="list-style-type: none"> 1. English 2. Scottish 3. Welsh 4. Cornish 5. Northern Irish 6. Ulster Scots 7. Cypriot (part not stated) 8. Greek 9. Greek Cypriot 10. Turkish 11. Turkish Cypriot 12. Italian 13. Irish Traveller 14. Traveller 15. Gypsy/Romany 16. Polish 17. Baltic States (Estonian or Latvian or Lithuanian) 18. Commonwealth of (Russian) Independent States 19. All republics which made up the former USSR 20. Kosovan 21. Albanian 22. Bosnian 23. Croatian 24. Serbian Other republics which made up the former Yugoslavia 25. Mixed White 26. Mixed Irish and other 27. White 28. Other White European or European unspecified or Mixed European 29. Other mixed White 30. Other White or White unspecified <p>Mixed Group</p> <p><i>White and Black Caribbean</i></p> <p><i>White and Black African</i></p> <p><i>White and Asian</i></p> <p><i>Other Mixed background</i></p> | <p>Asian or Asian British Group</p> <p><i>Indian or British Indian</i></p> <p><i>Pakistani or British Pakistani</i></p> <p><i>Bangladeshi or British Bangladeshi</i></p> <p><i>Other Asian background</i></p> <p>Punjabi</p> <p>Kashmiri</p> <p>East African Asian</p> <p>Sri Lankan</p> <p>Tamil</p> <p>Sinhalese</p> <p>Caribbean Asian</p> <p>British Asian</p> <p>Mixed Asian</p> <p>Other Asian or Asian Unspecified</p> <p>Black or Black British Group</p> <p><i>Caribbean</i></p> <p><i>African</i></p> <p><i>Other Black background</i></p> <p>Somali</p> <p>Nigerian</p> <p>Black British</p> <p>Mixed Black</p> <p>Other Black or Black unspecified</p> <p>Other Ethnic Groups</p> <p><i>Chinese</i></p> |
|--|--|

| | |
|----------------------------------|--|
| Black and Asian | Other |
| Black and Chinese | Vietnamese |
| Black and White | Japanese |
| Chinese and White | Filipino |
| Asian and Chinese | Malaysian |
| Other Mixed or Mixed unspecified | Buddhist |
| | Hindu |
| | Jewish |
| | Muslim |
| | Sikh |
| | Arab |
| | North African |
| | Middle Eastern (excluding Israeli, Iranian and Arab) |
| | Israeli |
| | Iranian |
| | Kurdish |
| | Moroccan |
| | Latin American |
| | South and Central American |
| | Multi-ethnic islands: |
| | Mauritian or Seychellois or Maldivian or St Helena |
| | Any other group |
| | Not Stated |
| | Ethnic category not stated |

Religions reported in the 2001 Census of Population

| | |
|---|----------------|
| All persons | 1685267 |
| Catholic | 678462 |
| Presbyterian Church in Ireland | 348742 |
| Church of Ireland | 257788 |
| Methodist Church in Ireland | 59173 |
| Other Christian (including Christian related) | 102221 |
| Baptist | 18974 |
| Free Presbyterian | 11902 |
| Brethren | 8595 |
| Christian | 8502 |
| Church of England | 6417 |
| Congregational Church | 5701 |
| Pentecostal | 5533 |
| Elim Church | 5448 |
| Protestant | 3674 |
| Reformed Presbyterian | 2238 |
| Jehovah's Witness | 1993 |
| Church of Scotland | 1901 |
| Independent Methodist | 1771 |
| Salvation Army | 1640 |
| Church of Jesus Christ of Latter Day Saints (Mormons) | 1414 |
| Non- Subscribing Presbyterian | 1233 |
| Evangelical | 1229 |
| Church of the Nazarene | 1215 |
| Non Denominational | 1115 |
| Christian Fellowship | 1015 |
| Church of God | 990 |
| Presbyterian | 985 |

| | |
|--|------------|
| Religious Society of Friends (Quakers) | 749 |
| Moravian | 691 |
| Protestant (Mixed) | 625 |
| Evangelical Presbyterian Church | 543 |
| Whitewell Metropolitan Tabernacle | 399 |
| Methodist | 379 |
| Unitarian | 342 |
| Independent | 305 |
| Church of Christ | 273 |
| Free Methodist | 266 |
| Apostolic Church | 237 |
| Seventh Day Adventist | 232 |
| Assemblies of God Church | 216 |
| Lutheran | 194 |
| City Mission | 186 |
| House Church | 184 |
| Inter- denominational | 131 |
| Anglican | 128 |
| Metropolitan Church | 125 |
| Independent Evangelist | 120 |
| Orthodox Church | 113 |
| Christian Fellowship Church | 111 |
| Church in Wales | 100 |
| Scottish Presbyterian | 98 |
| Greek Orthodox | 94 |
| Charismatic | 93 |
| Reformed | 92 |
| Fellowship Church | 89 |
| Free Presbyterian Church of Ulster | 87 |
| Vineyard Churches | 87 |
| Mission Hall | 80 |

| | |
|--|-----------|
| Community Church | 76 |
| Christian Scientist | 60 |
| Cooneyite | 55 |
| King's Fellowship | 47 |
| New Church | 43 |
| Jesus Saves Mission | 39 |
| Christadelphian | 38 |
| Fellowship of Independent Evangelical Churches | 37 |
| Free Church of Scotland | 36 |
| Lifeline/Lifelink Church | 35 |
| Free Presbyterian Church of Scotland | 33 |
| Believe in God | 26 |
| Belfast Chinese Christian Church | 25 |
| Emmanuel Church | 25 |
| Full Gospel Assembly | 25 |
| Nonconformist | 25 |
| Emmanuel Mission | 23 |
| Dutch Reformed Church | 22 |
| The Methodist Church in Wales | 22 |
| Russian Orthodox Church | 22 |
| New Life Fellowship | 21 |
| Branagh Memorial Church | 19 |
| Lifeboat Mission | 18 |
| Scottish Episcopal Church | 18 |
| Episcopalian | 16 |
| The Revival Fellowship | 16 |
| Glenabbey Church | 15 |

| | |
|---|-------------|
| United Reformed Church | 15 |
| Non Sectarian | 14 |
| Faith Mission | 13 |
| Free Evangelical Church | 13 |
| Jordan Victory Church | 12 |
| Celtic Christian | 11 |
| Ecumenical | 11 |
| Gateway Church | 11 |
| Shalom Victory Church | 11 |
| Bible Pattern Church | 10 |
| Church of the Redeemer | 10 |
| Iron Hall | 10 |
| United Church of Canada | 10 |
| Other Christian Denominations | 241 |
| Other religions and philosophies | 5028 |
| Muslim (Islam) | 1943 |
| Hindu | 825 |
| Buddhist | 533 |
| Jewish | 365 |
| Baha'i | 254 |
| Sikh | 219 |
| Pagan | 148 |
| Atheist | 106 |
| Spiritualist | 106 |
| Agnostic | 66 |
| Own Belief System | 65 |
| Hare Krishna | 53 |
| Wicca | 50 |
| Taoist | 41 |
| Humanist | 40 |
| Chinese Religions | 32 |
| Druidism | 19 |

| | |
|---|---------------|
| Rastafarian | 13 |
| Zoroastrian | 13 |
| Satanism | 12 |
| Other religious and philosophical groups | 125 |
| No religion or religion not stated | 233853 |

Notes:

- (1) The term Catholic includes those respondents who gave their religion as Catholic or Roman Catholic
- (2) 'Other Christian Denominations' and 'Other religious and philosophical groups' include all religions, religious denominations or religious bodies with less than 10 adherents in that area.
- (3) Where a religion, religious denomination or religious body has less than 10 adherents in that area, the number of adherents has been suppressed, and is included in 'Other Christian denominations' or 'Other religious and philosophical groups'

**Annual School Census, Department of Education in Northern Ireland
Language categories and codes**

| Descriptor | Code List |
|------------------------------|------------------|
| Afrikaans | AFR |
| Akan/Twi-Fante | AKA |
| Albanian/Shqip | ALB |
| Arabic | ARA |
| Belarusian | BEL |
| Bengali/Bangla/Sylheti | BEN |
| Edo/Bini | BIN |
| British Sign Language | BSL |
| Bulgarian | BUL |
| Burmese/Myanma | BUR |
| Chinese (Any Other) | CHA |
| Chinese (Cantonese) | CHC |
| Chinese (Hokkien/Fujianese) | CHH |
| Chinese (Hakka) | CHK |
| Chinese (Mandarin/Putonghua) | CHM |
| Creole English | CPE |
| Creole French | CPF |
| Czech | CZE |
| Danish | DAN |
| Dutch/Flemish | DUT |
| English | ENG |
| Esan/Ishan | ESA |
| Estonian | EST |
| Fijian | FIJ |
| Finnish | FIN |
| French | FRE |
| German | GER |
| Kikuyu/Gikuyu | KIK |
| Gaelic (Scotland) | GLA |
| Irish | GLE |
| Greek | GRE |
| Gujarati | GUJ |
| Hebrew | HEB |
| Hindi | HIN |
| Hungarian | HUN |
| Igbo | IBO |
| Icelandic | ICE |
| Irish Sign Language | ISL |
| Italian | ITA |
| Japanese | JPN |
| Kannada | KAN |
| Kashmiri | KAS |
| Korean | KOR |
| Kurdish | KUR |
| Luganda/Ganda | LUG |
| Lingala | LIN |

| | |
|--------------------------|-----|
| Lithuanian | LIT |
| Latvian | LAV |
| Marathi | MAR |
| Matebele | MAT |
| Macedonian | MAC |
| Malayalam | MAL |
| Maltese | MLT |
| Malay/Indonesian | MAY |
| Ndebele | NDE |
| Nepali | NEP |
| Norwegian | NOR |
| Oriya | ORI |
| Other Language* | OTL |
| Pashto/Pakhto | PAT |
| Pahari/Himachali (India) | PHA |
| Panjabi | PNJ |
| Polish | POL |
| Portuguese | POR |
| Persian/Farsi | PRS |
| Rajasthani/Marwari | RAJ |
| Romany | RME |
| Romanian | RMN |
| Russian | RUS |
| Serbian/Croatian/Bosnian | SCB |
| Shona | SNA |
| Slovak | SLO |
| Slovenian | SLV |
| Sindhi | SND |
| Sinhala/Sinhalese | SIN |
| Somali | SOM |
| Spanish | SPA |
| Sotho/Sesotho | SOT |
| Tswana/Setswana | TSN |
| Swahili/Kiswahili | SWA |
| Swedish | SWE |
| Tamil | TAM |
| Telugu | TEL |
| Tetum | TET |
| Tagalog/Filipino | TGL |
| Thai | THA |
| Tibetan | TIB |
| Tsonga | TSO |
| Turkish | TUR |
| Ukrainian | UKR |
| Urdu | URD |
| Venda | VEN |
| Vietnamese | VIE |
| Welsh/Cymraeg | WEL |
| Xhosa | XHO |
| Yiddish | YDI |
| Yoruba | YOR |
| Zulu | ZUL |

